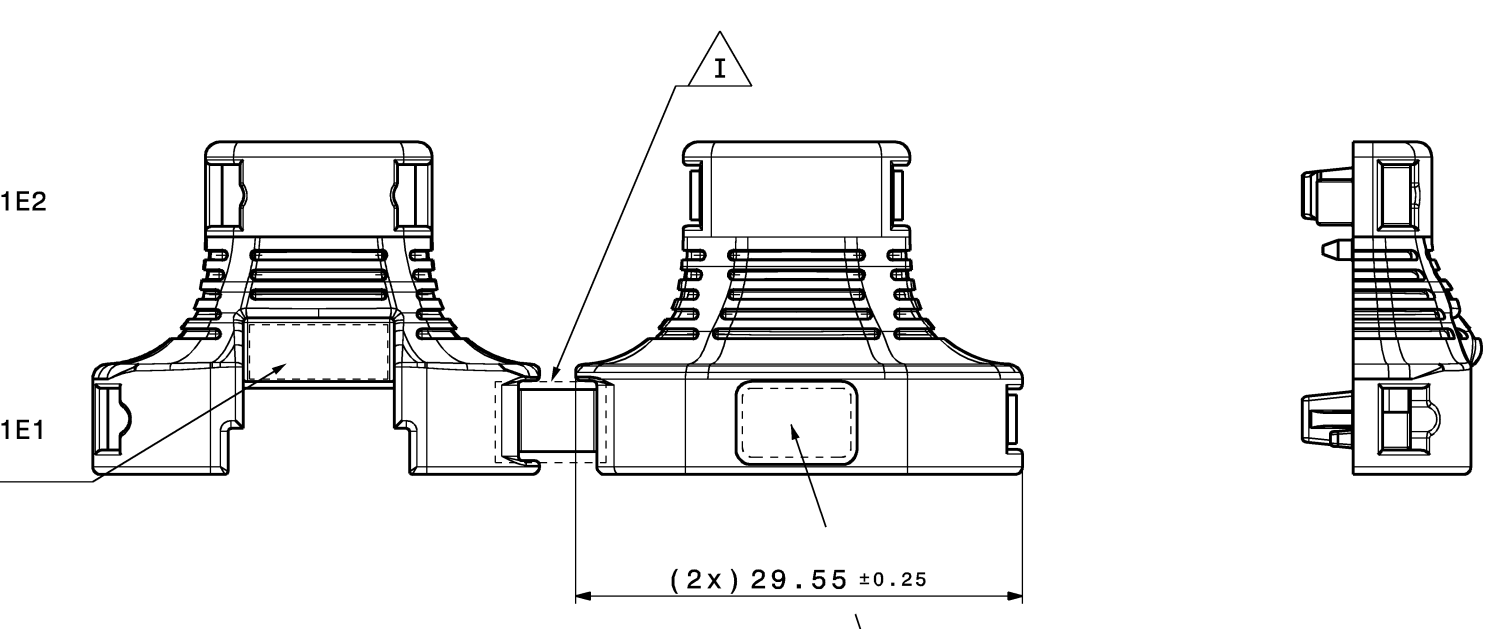


EDITION AXIAL

MOLD CAVITY NO.
FONT LEANT ON DIN 1451 1E2
RECESSED/RAISED

DATE STAMP
RECESSED/RAISED

HIRSCHMANN NO.
FONT LEANT ON DIN 1451 1E1
RECESSED/RAISED

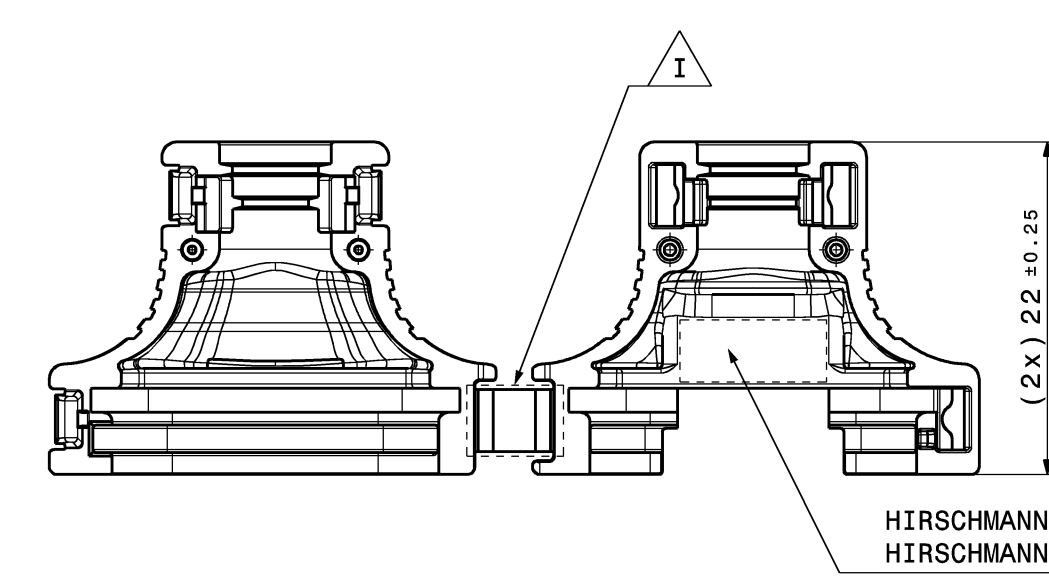
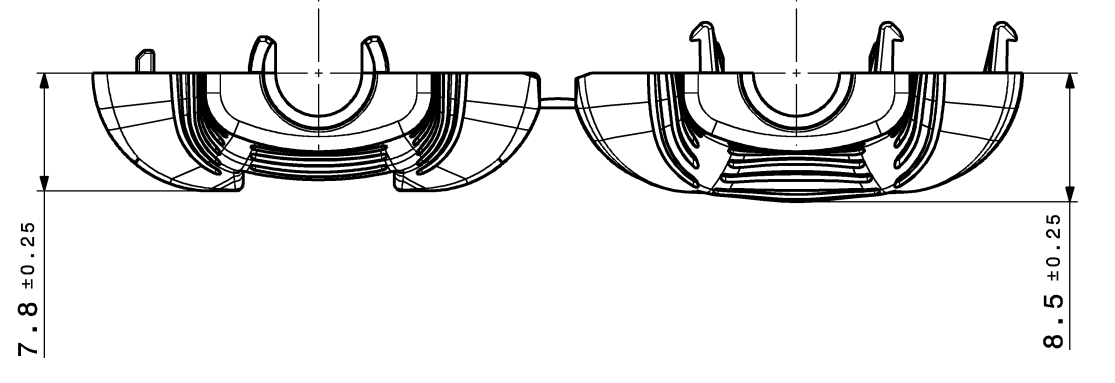


FIELD RECESSED/ RAISED

HIRSCHMANN SIGN RECESSED/ RAISED

MATERIAL LABEL FONT LEANT ON DIN 1451 1E1 RECESSED/RAISED

MATERIAL: PA6
RECESSED/ RAISED

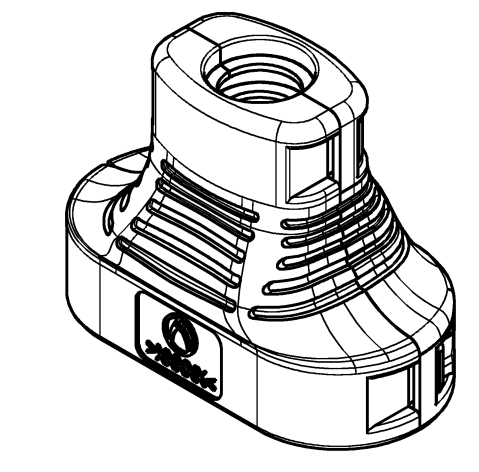


HIRSCHMANN-REVISION LEVEL RECESSED/RAISED

HIRSCHMANN-PLANT IDENTIFICATION RECESSED/RAISED

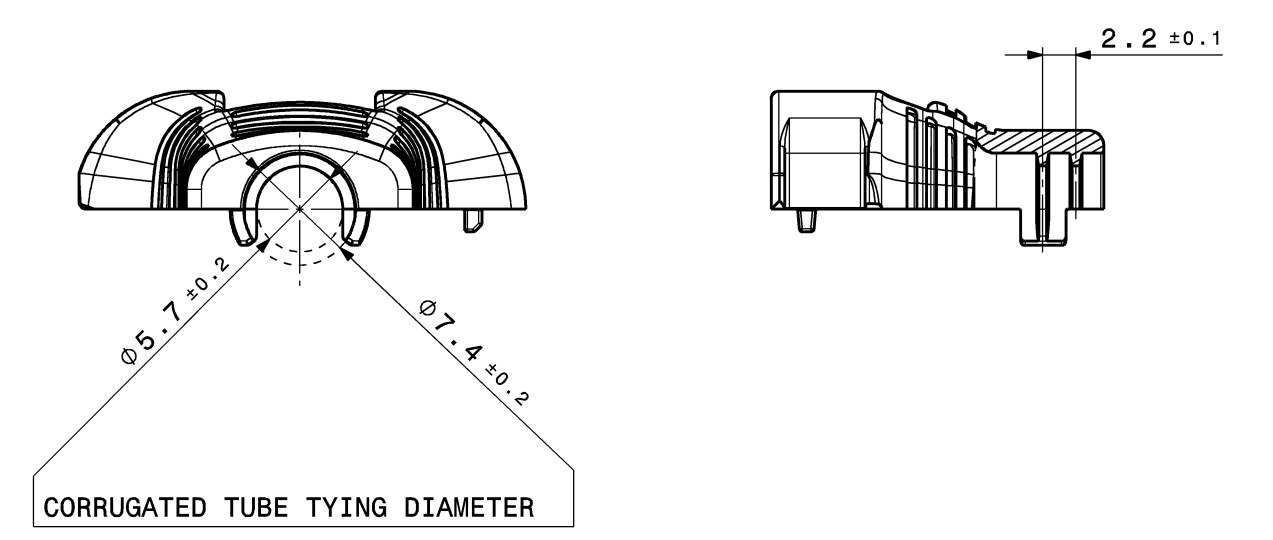
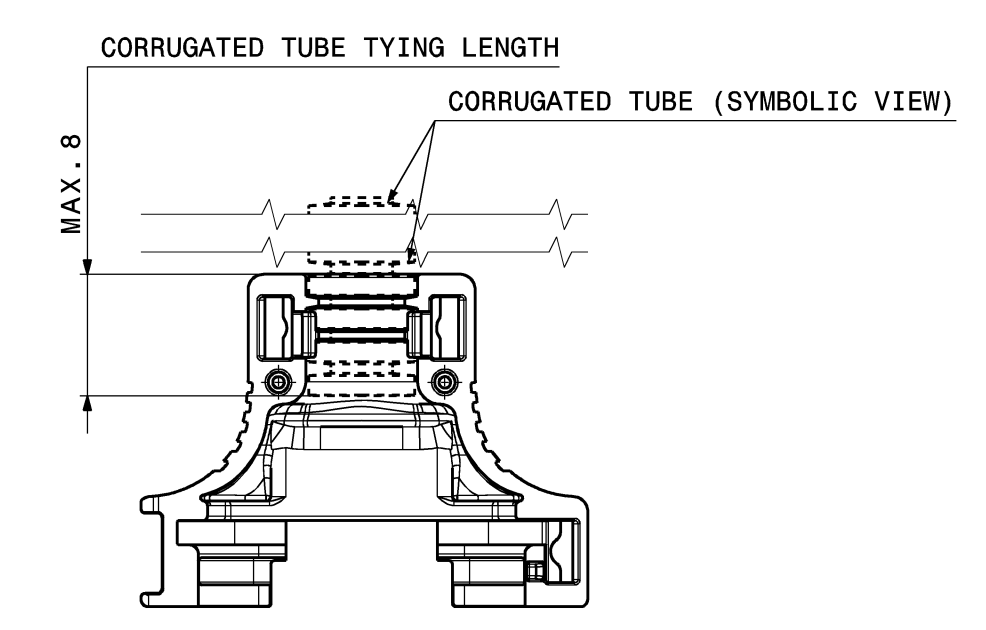
ISOMETRIC VIEW*

*CLOSED VIEW; DOES NOT CORRESPOND TO THE DELIVERY STATUS.



MOUNTING GEOMETRY FOR CORRUGATED TUBE NW 4.5

HALF-SHELLS VIEW / SYMBOLIC IMAGE

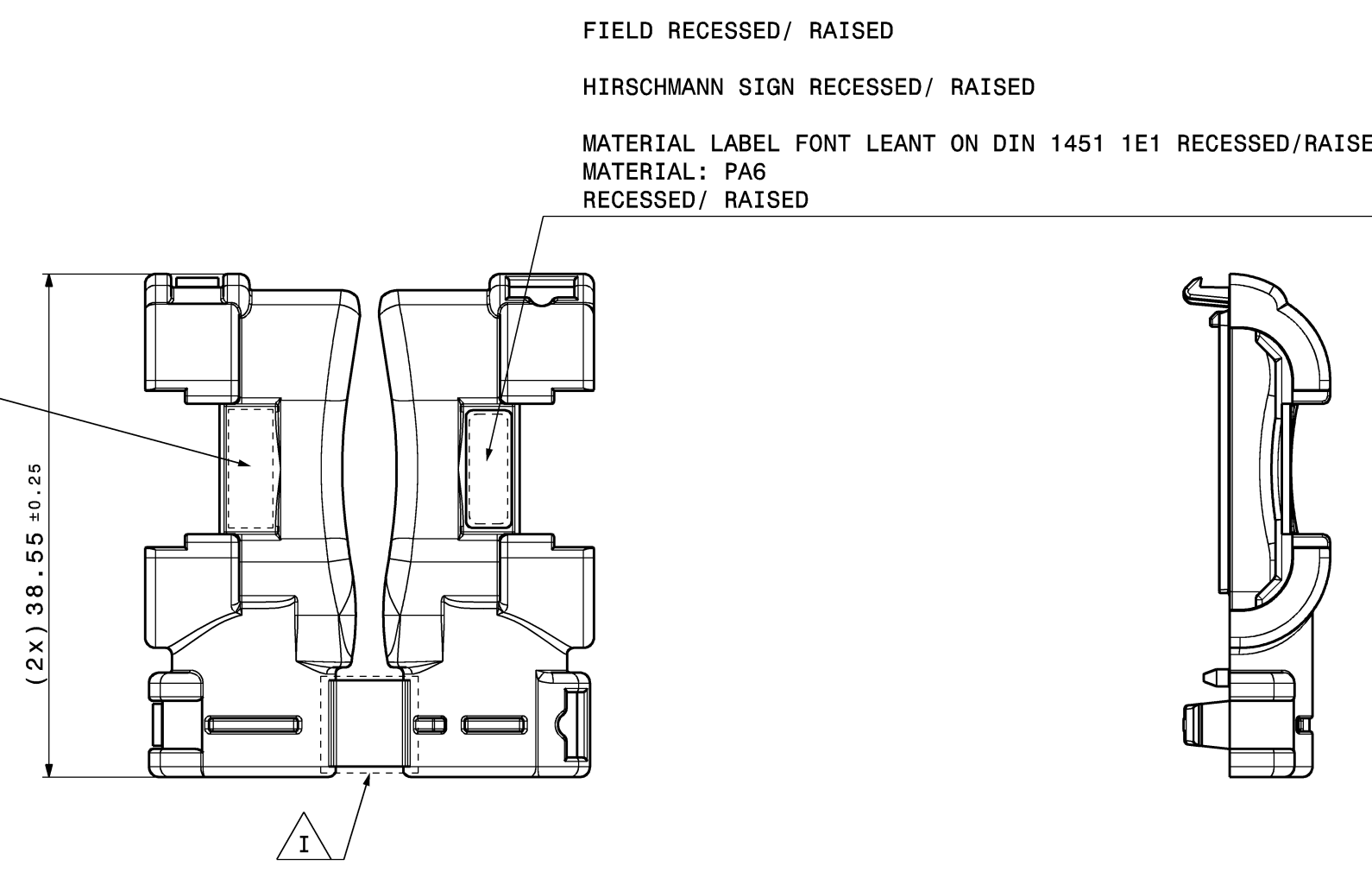


EDITION 90°

MOLD CAVITY NO.
FONT LEANT ON DIN 1451 1E2
RECESSED/RAISED

DATE STAMP
RECESSED/RAISED

HIRSCHMANN NO.
FONT LEANT ON DIN 1451 1E1
RECESSED/RAISED

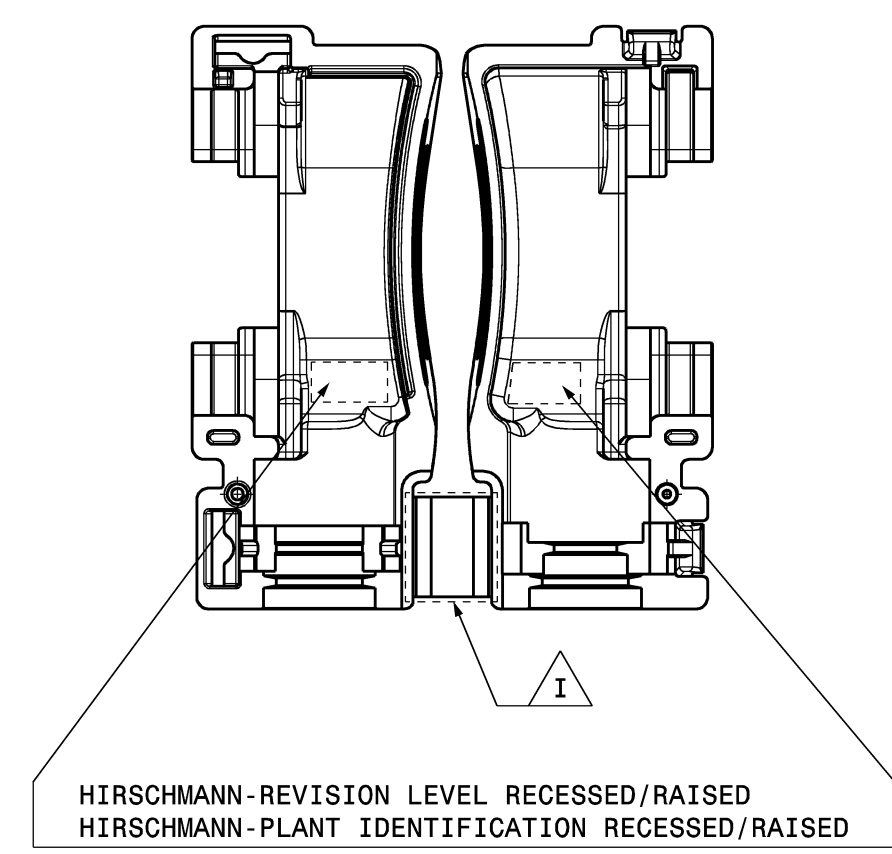


FIELD RECESSED/ RAISED

HIRSCHMANN SIGN RECESSED/ RAISED

MATERIAL LABEL FONT LEANT ON DIN 1451 1E1 RECESSED/RAISED

MATERIAL: PA6
RECESSED/ RAISED

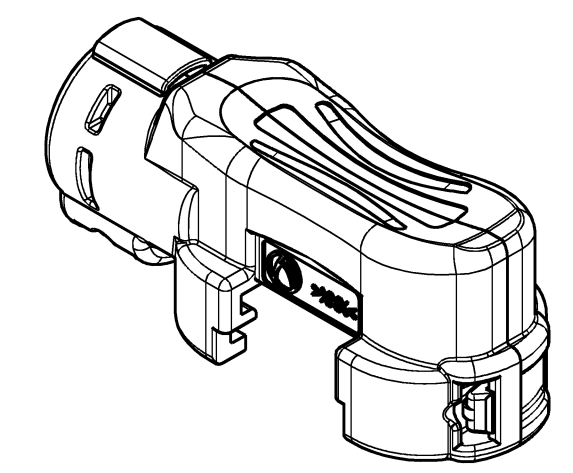


HIRSCHMANN-REVISION LEVEL RECESSED/RAISED

HIRSCHMANN-PLANT IDENTIFICATION RECESSED/RAISED

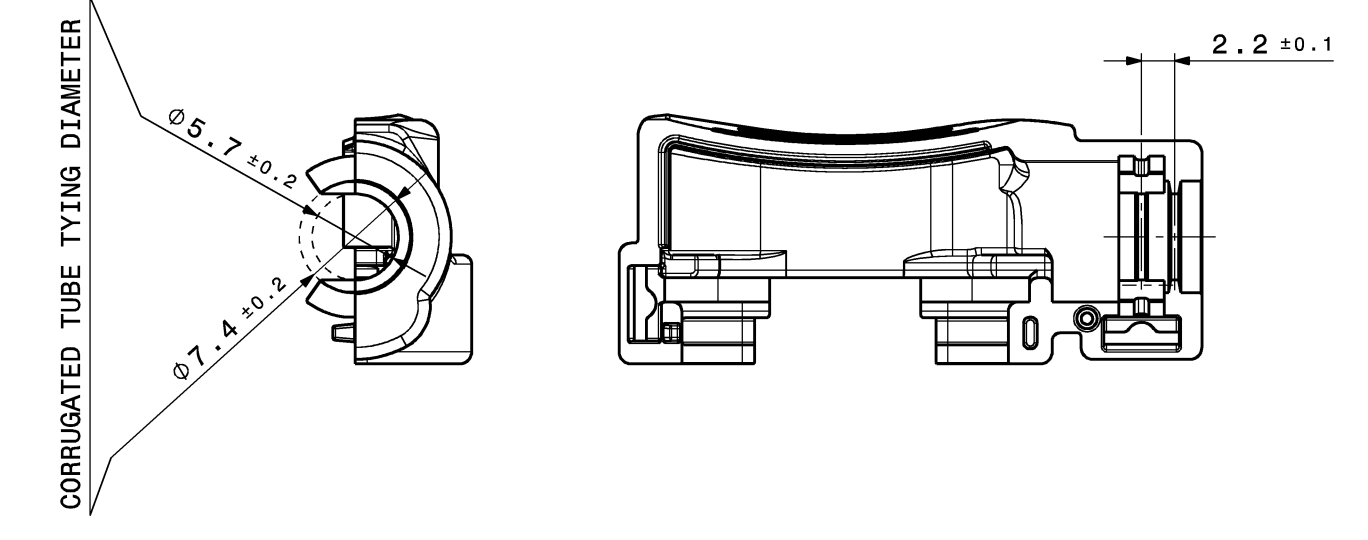
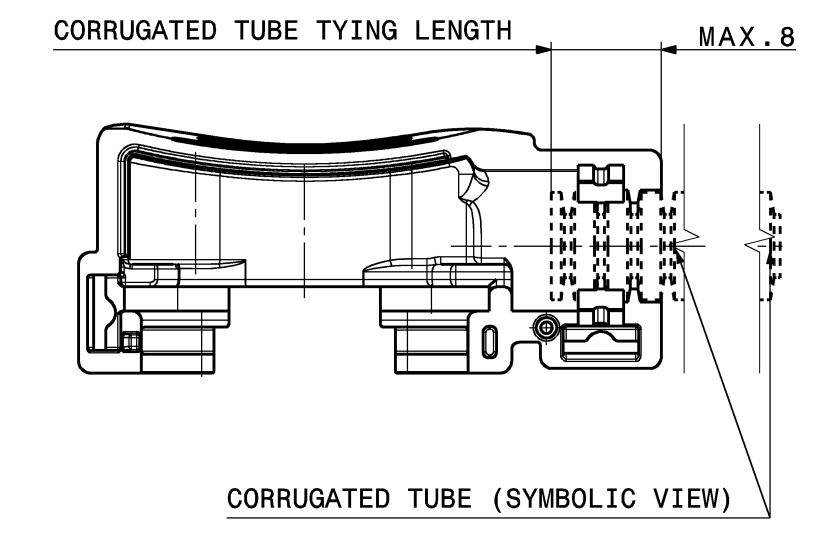
ISOMETRIC VIEW*

*CLOSED VIEW; DOES NOT CORRESPOND TO THE DELIVERY STATUS.



MOUNTING GEOMETRY FOR CORRUGATED TUBE NW 4.5

HALF-SHELLS VIEW / SYMBOLIC IMAGE



GENERAL TOLERANCES FOR UNTOLERATED DIMENSIONS:

- ANGLE-DIMENSIONS [°]
TOLERANCE FOR ALL ANGLE-DIMENSIONS: ±2°
- RADII: [mm]

TO 1	1-3	3-10	10-20	20-30	30-50
±0.2	±0.3	±0.4	±0.5	±1	±2
- DISTANCE-DIMENSIONS: DIN 2768-mH
- GENERAL TOLERANCE FOR SYMMETRY: 0.2

KEY-FACTS:

TEMPERATURE AREA ACC LV124 2013-02	TEMPERATURE COLLECTIVE 4
FLAME RESISTANCE ACC UL94 (ACC. DATA SHEET)	HB

COMMENTS:

- EDITION AXIAL AND 90° IS SHOWN
- DELIVERY STATUS AS DRAWN AS BULK GOOD.
- ENGLISH TEXT IS VALID
- MISSING DIMENSIONS SEE CAD-MODEL. THEREFORE THE GENERAL-TOLERANCES ARE VALID
- DESIGN DEVIATIONS COMPARED WITH DETAIL DRAWINGS ARE INSIGNIFICANT. THE DETAIL DRAWINGS ARE VALID.
- PART CORRESPONDS TO EU SCRAP CAR GUIDELINE 2000/53/EG
- CHANGES BASED ON TECHNICAL PROGRESS ARE IN THE DECISION OF THE MANUFACTURER! DETAILS OF IMPLEMENTATION ARE LEFT TO MANUFACTURER.
- MAX. 30% RECLAIM PERMITTED
- PART IDENTIFICATION SIMILAR DIN 1451
- DRAFT ANGLE WITHIN TOLERANCE.
- MAX. SPLIT LINE 0.2
- MAX. BURR 0.3

MARKED AREA: SURFACE STRUCTURE CHANGES (WITHOUT ANY EFFECT ON THE FUNCTIONALITY) ARE POSSIBLE, ESPECIALLY AFTER MOUNTING.

707-135-501	A	PA6	90°	-2.8	BLACK SIMILAR RAL9005	4way 1.2 Protective Cap 90° NW4.5	805-122-...00 4way 1.2 SealStar F Connector	3x 1mm ² / 1x 0,75mm ²
707-134-501	A		AXIAL	-2.5	BLACK SIMILAR RAL9005	4way 1.2 Protective Cap Axial NW4.5	872-859-...00 4way 1.2 SealStar F Connector 806-880-...00 4way 1.2 SealStar HMK F Connector 805-199-...00 3way 2.8 SealStar F Connector	3x 1mm ² / 1x 0,75mm ² 3x 1mm ² / 1x 0,75mm ² 1x 2.5mm ² / 2x 1mm ²

PART NUMBER:	REVISION:	MATERIAL:	EDITION:	WEIGHT (g)	COLOR:	COMMENT:	MATCHING HIRSCHMANN CONNECTOR	Max. Assignment Cable type FLR
HIRSCHMANN AUTOMOTIVE								

00	Ersterstellung / Initial edition	09.12.2020	BK1
Version	Sub. nr.	Description of alteration	Date
Test instructions			
Crude state	Material according drawing	Final state	Gross weight g/pc Final weight g/pc
Material-Nr. / No.	Tolerances according drawing	Surface	Scrap
Edges	DIN ISO 13715	Dimensions in millimeters	Scale 2:1
Geometric tolerances	DIN ISO 1101	CDI	CAD System Version CATIA V5
Drawn	09.12.2020	B.Kiechle	Title
Checked	12.01.2021	M.Kalib	Type
Released	12.01.2021	M.Kalib	Sheet 1 of 1
HIRSCHMANN AUTOMOTIVE		Drawing - No.	707-134-...00
Origin	Replacement	DWG	100000543492

Controlled status available in the system!