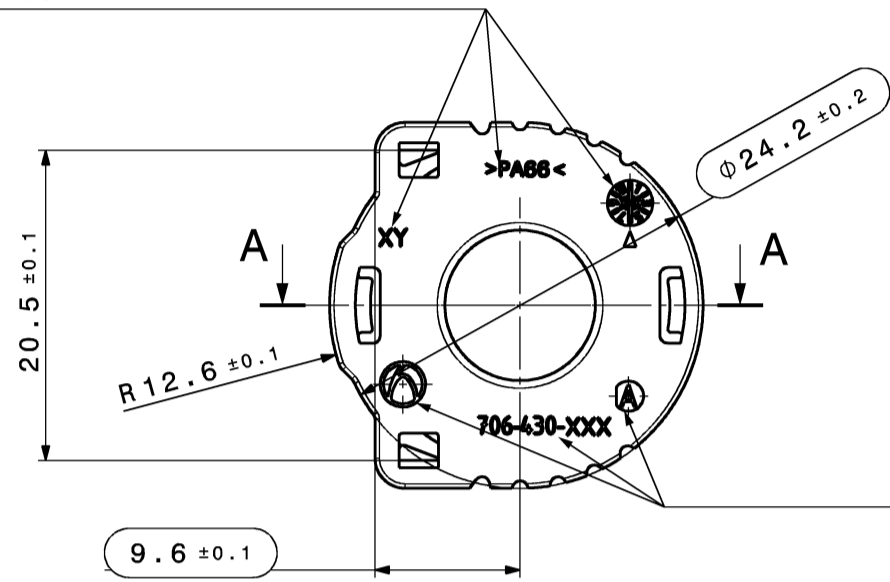


-Datum D3
vertieft
DATE D3
RECESSED

-Materialkennzeichnung
vertieft
MATERIAL DESCRIPTION
RECESSED

-Formteilnummer
vertieft
MOLD CAVITY NO.
RECESSED

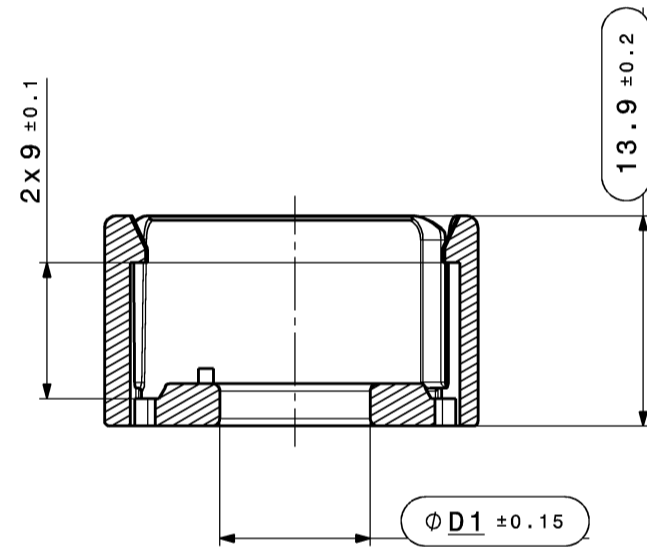
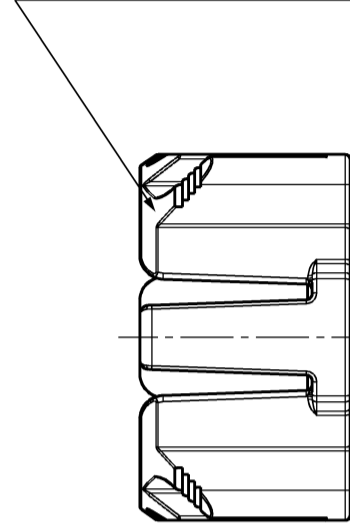


-HA Revision
HA REVISION

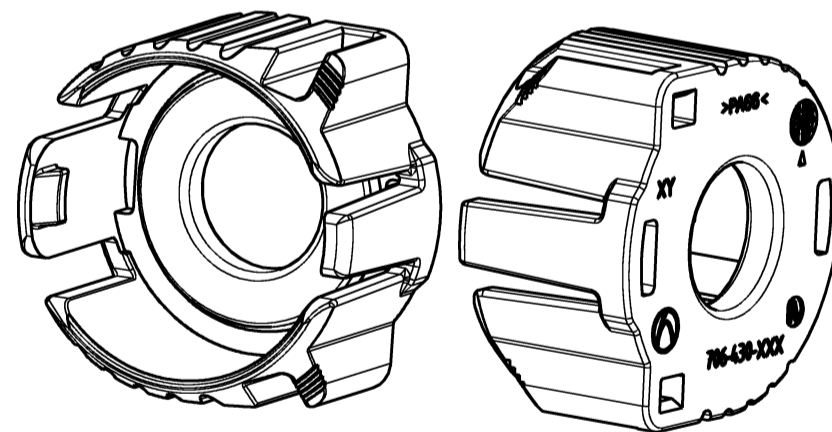
-Firmenzeichen
vertieft
COMPANY SIGN
RECESSED

-Hirschmann Nr.
vertieft
HIRSCHMANN NO.
RECESSED

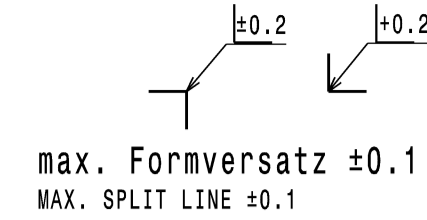
Fase 35° umlaufend
CHAMFER 35° CIRCULAR



Schnittansicht A-A
SECTION CUT A-A



Isometrische Ansicht Ind.501-503
ISOMETRIC VIEW



Toleranzen fuer nicht tolerierte Masse:
1. Winkelmasse: (in °)
Fuer alle Winkelmasse gilt ±2°
2. Radien: (in mm)
3. Laengenmasse:
DIN 2768-mH
4. Allgemeintoleranz fuer Symmetrie: ±0.2

bis 1	1-3	3-10	10-20	20-30	30-50
±0.2	±0.3	±0.4	±0.5	±1	±2

TOLERANCES FOR UNTOLERATED DIMENSIONS:
1. ANGLE-DIMENSIONS (IN °)
TOLERANCE FOR ALL ANGLE-DIMENSIONS: ±2°
2. RADII: (IN mm)
3. DISTANCE-DIMENSIONS:
DIN 2768-mH
4. GENERAL TOLERANCE FOR SYMMETRY: ±0.2

TO 1	1-3	3-10	10-20	20-30	30-50
±0.2	±0.3	±0.4	±0.5	±1	±2

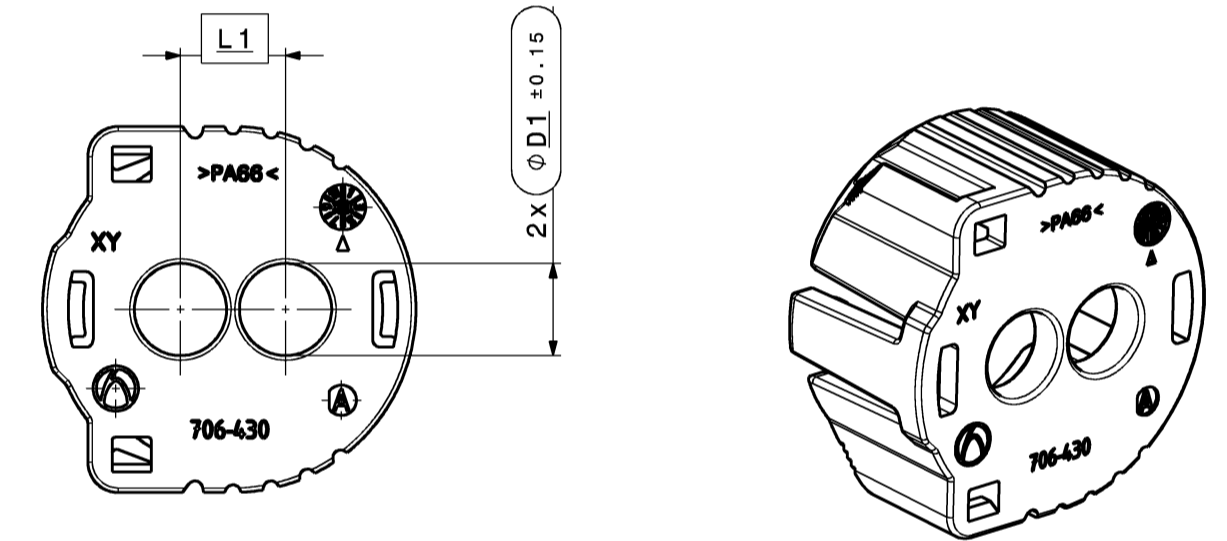
Bemerkungen:

COMMENTS:

1. massgebend ist der deutsche Text / GERMAN TEXT IS VALID
2. unbemaste Radien R0.3 +/- 0.1mm / UNDIMENSIONED RADII R0.3 +/- 0.1mm
3. Funktionsbestimmende Maße, die mit gekennzeichnet sind, werden im EMPB dokumentiert. Nicht gekennzeichnete Maße werde ebenfalls ausgemessen, aber nicht im EMPB dokumentiert. Abweichungen sind zu korrigieren. DIMENSIONS WITH ARE DOCUMENTED IN THE INITIAL SAMPLE INSPECTION PREORT (ISIR). UNMARKED DIMENSIONS ARE ALSO MEASURED BUT NOT DOCUMENTED IN THE ISIR. VARIATIONS MUST BE CORRECTED.
4. Teil entspricht Altautorichtlinie nach DBL 8585
PART CORRESPONDS TO SCRAP CAR GUIDELINE DBL 8585
5. Teilekennzeichnung angelehnt an MBN 10435
PART IDENTIFICATION SIMILAR MBN 10435
6. Max. 30% Regranulat zulaessig / MAX. 30% RECLAIM ACCEPTABLE

02

Index 504 / 505



Isometrische Ansicht Ind.504+505
ISOMETRIC VIEW

Restliche Maße und Eigenschaften siehe Index 501-503
REMAINING DIMENSIONS AND PROPERTIES SEE INDEX 501-503

Lft. Bestell Nr. ORDER NO.	D1	L1	Material MATERIAL	Farbe COLOUR	Gewicht WEIGHT	HA REV.	Leitungsquerschnitt WIRE CROSS SECTION	Hirschmann-Nummer HIRSCHMANN-NUMBER
706-430-505	6,65	7,5	PA66 GF25	rot / RED ~ RAL 3024	2,6g	A	6mm ² SCC	706-430-005
706-430-504	6,10	6,95		grau / GREY ~ RAL 7040	2,7g	A	4mm ² SCC	706-430-004
706-430-503	12,85	-		rot / RED ~ RAL 3024	2,1g	B	6mm ²	706-430-003
706-430-502	11,35	-		grau / GREY ~ RAL 7040	2,2g	B	4mm ²	706-430-002
706-430-501	9,95	-		beige / FAWN ~ RAL 1001	2,3g	B	2,5mm ²	706-430-001

02

Version	Numb. of	Description of alteration	Date	drwn
02	01	ADDED INDEX 504 / 505	12.02.2020	RHO
00	00	REMOVED INDICES 004-006; ADDED HIRSCHMANN INDICES; Ersterstellung / Initial edition	28.03.2018 27.09.2017	BAS JZI

Crude state	Material	Final state	Gross weight	g/pc
			Final weight	g/pc

Material-No.	Tolerances	Surface	Scrap
	DIN 2768-mH	cm ² /pc	%
	Edges	DIN ISO 13715	
	Geometric tolerances	DIN ISO 1101	

Date	Name	Dimensions specially checked for acceptance
12.02.2020	R.Hoor	
12.02.2020	L.Breuss	
12.02.2020	L.Breuss	

Title	DIN A2
Schutzkappe	
Type	CDI
HIRSCHMANN PowerStar 40-2	

Origin	Replacement	DNR
HIRSCHMANN AUTOMOTIVE Oberer Paspelsweg 6-8 A-6830 Rankweil-Brederis		100000231173

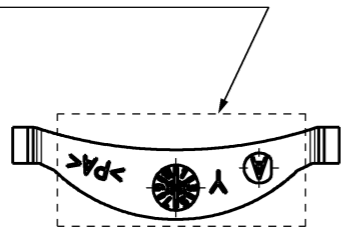
Controlled status available in the system!

8 Freigegeben

This materials contain information protected by copyright. No part of this materials may be photocopied, otherwise reproduced or translated into another language without the prior written consent of Hirschmann. All rights reserved.

Plot from: TNAITER on 06.08.2022 Doc.Vers. 02 Valid from: 20200212 Valid until: ... Status: Kundenfreigabe

- Materialkennzeichnung vertieft
MATERIAL IDENTIFICATION RECESSED
- Formteilnummer vertieft
MOLD CAVITY NUMBER RECESSED
- Datumsuhr vertieft-erhaben
DATE STAMP RECESSED-RAISED
- HA Revision vertieft-erhaben
HA REVISION RECESSED-RAISED



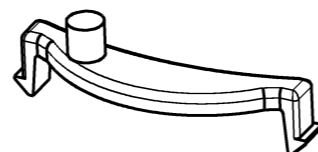
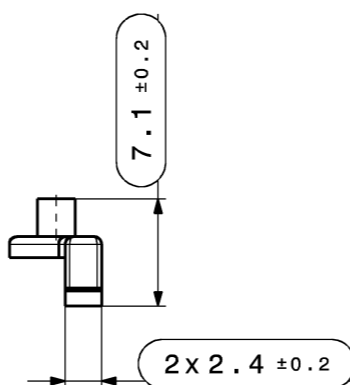
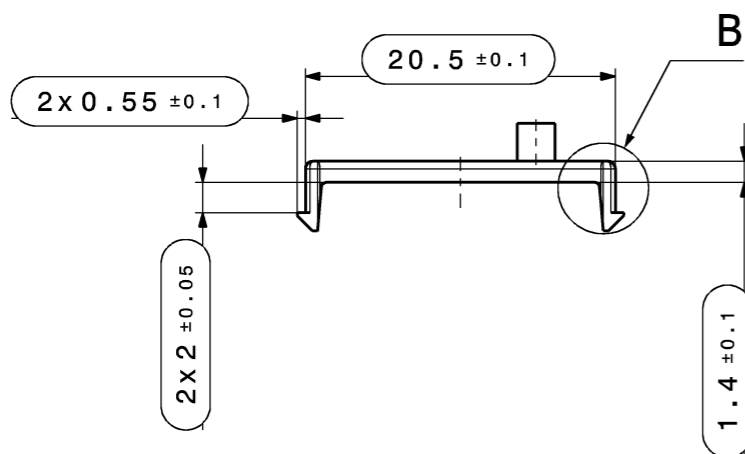
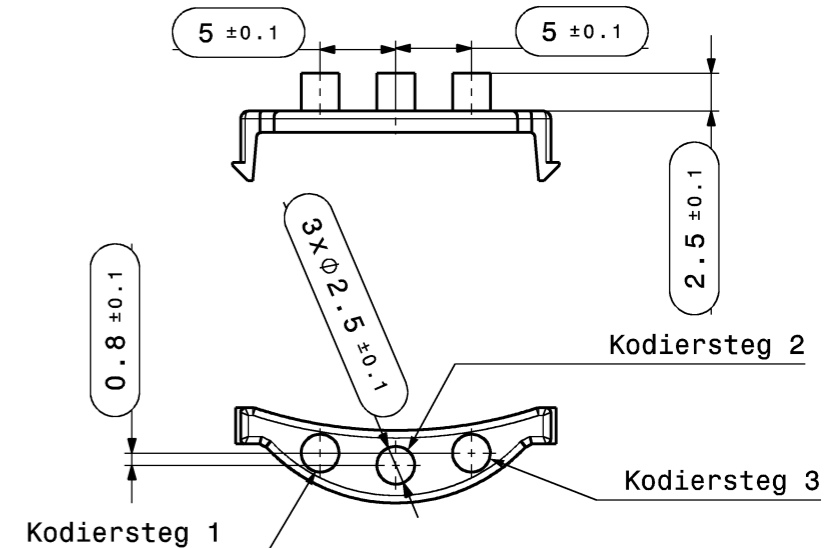
Toleranzen fuer nicht tolerierte Masse:

1. Winkelmasse: (in °)
Fuer alle Winkelmasse gilt ±2°
 2. Radien : (in mm)
- | | | | | | |
|-------|------|------|-------|-------|-------|
| bis 1 | 1-3 | 3-10 | 10-20 | 20-30 | 30-50 |
| ±0.2 | ±0.3 | ±0.4 | ±0.5 | ±1 | ±2 |
3. Laengenmasse :
DIN 2768-mH
 4. Allgemeintoleranz fuer Symmetrie: $\equiv 0.2$

TOLERANCES FOR UNTOLERATED DIMENSIONS:

1. ANGLE-DIMENSIONS (IN °)
TOLERANCE FOR ALL ANGLE-DIMENSIONS: ±2°
 2. RADII : (IN mm)
- | | | | | | |
|------|------|------|-------|-------|-------|
| TO 1 | 1-3 | 3-10 | 10-20 | 20-30 | 30-50 |
| ±0.2 | ±0.3 | ±0.4 | ±0.5 | ±1 | ±2 |
3. DISTANCE-DIMENSIONS:
DIN 2768-mH
 4. GENERAL TOLERANCE FOR SYMMETRY: $\equiv 0.2$

	Steg 1	Steg 2	Steg 3
Kodierung A CODING A	X		
Kodierung B CODING B		X	
Kodierung C CODING C			X
Kodierung D CODING D	X	X	
Kodierung E CODING E		X	X
Kodierung F CODING F	X		X
Kodierung Z CODING Z	X	X	X



Isometrische Ansicht
ISOMETRIC VIEW

max. Formversatz ±0.1
MAX. SPLIT LINE ±0.1

Bemerkungen:

COMMENTS:

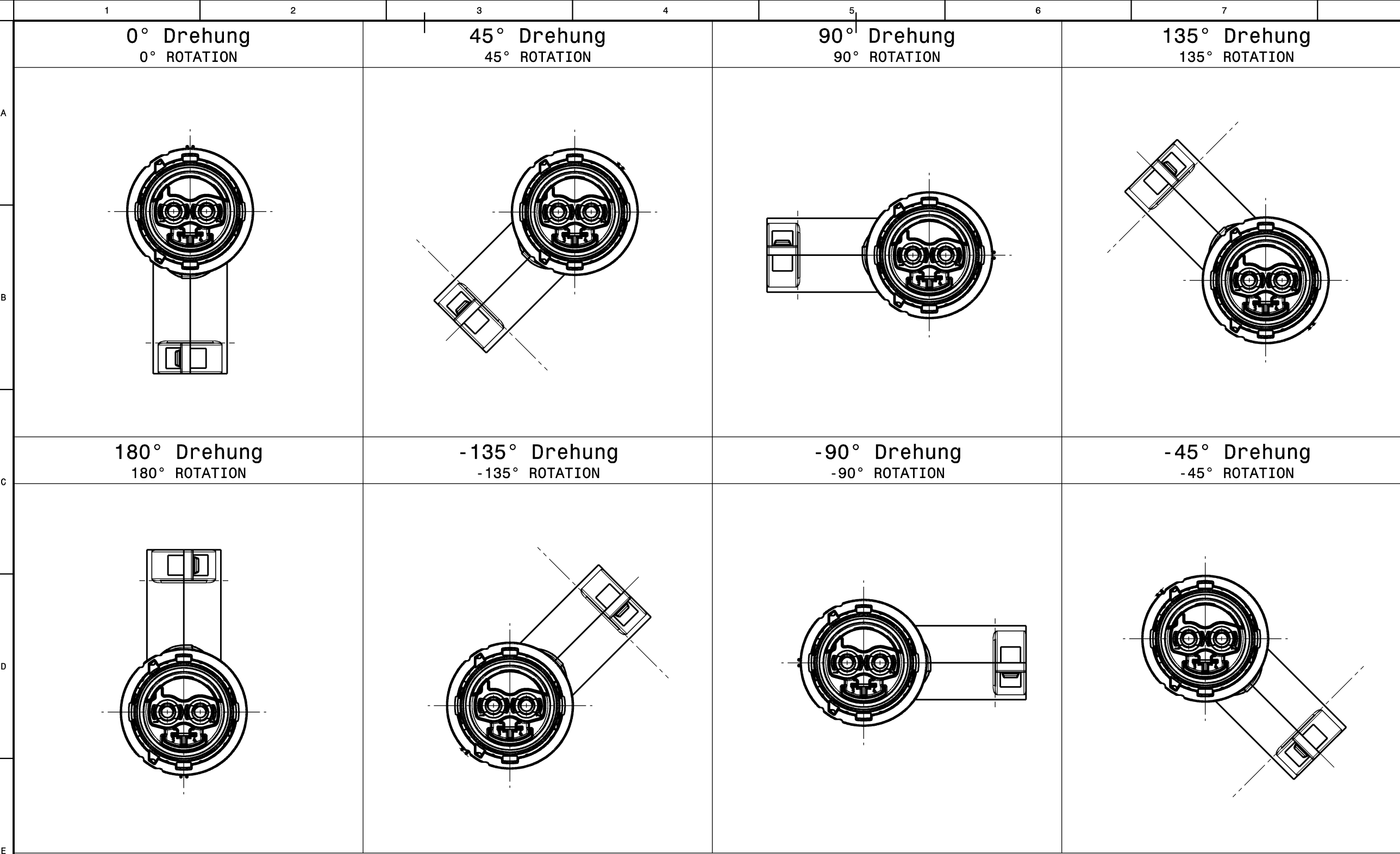
1. massgebend ist der deutsche Text / GERMAN TEXT IS VALID
2. Kodierung A gezeichnet / CODING A DRAWN
3. unbemaste Radien R0.3 +/- 0.1mm / UNDIMENSIONED RADII R0.3 +/- 0.1mm
4. Funktionsbestimmende Maße, die mit $\text{\textcircled{\hspace{1cm}}}$ gekennzeichnet sind, werden im EMPB dokumentiert. Nicht gekennzeichnete Maße werde ebenfalls ausgemessen, aber nicht im EMPB dokumentiert. Abweichungen sind zu korrigieren.
DIMENSIONS WITH $\text{\textcircled{\hspace{1cm}}}$ ARE DOCUMENTED IN THE INITIAL SAMPLE INSPECTION PREORT (ISIR). UNMARKED DIMENSIONS ARE ALSO MEASURED BUT NOT DOCUMENTED IN THE ISIR. VARIATIONS MUST BE CORRECTED.
5. Teil entspricht Altautorichtlinie nach DBL 8585
PART CORRESPONDS TO SCRAP CAR GUIDELINE DBL 8585
6. Teilekennzeichnung angelehnt an MBN 10435 / PART IDENTIFICATION SIMILAR MBN 10435
7. Max. 30% Regranulat zulaessig / MAX. 30% RECLAIM ACCEPTABLE

02	geometry clip updated; added detail B;	02.02.2021	FWI	
01	Added Index007;	13.11.2019	STS	
00	Ersterstellung / Initial edition	27.09.2017	JZI	
Version	Numb. of	Description of alteration	Date	drwn
Test instructions				
Crude state		Material	Final state	Gross weight g/pc
				Final weight g/pc
Material-No.		Tolerances	DIN 2768-mH	Surface cm ² /pc
		Edges	DIN ISO 13715	Scrap %
		Geometric tolerances	DIN ISO 1101	dimensions in millimeters
Date		Name	Dimensions specially checked for acceptance	
Drawn	02.02.2021	F.Winsauer	Title	
Checked	15.02.2021	L.Breuss	Type	
Released	15.02.2021	L.Breuss	HIRSCHMANN PowerStar 40-2	
HIRSCHMANN AUTOMOTIVE		Drawing - No.		706-505-...00
Oberer Paspelsweg 6-8 A-6830 Rankweil-Brederis		Origin		Replacement
		DNR		100000231169
		Sheet		1 of 1
		CAD System/Version		CATIA V5
		DIN A3		CDI

Lft. Bestell Nr. ORDER NO.	Kodierung CODING	Material MATERIAL	Farbe COLOR	Gewicht WEIGHT	HA REV.
706-505-505	Z	PA66 GF25	wasserblau, ~RAL 5021 WATERBLUE, ~RAL 5021	0,2 g	B
706-505-504	D		violett, ~RAL 4004 PURPLE, ~RAL 4004	0,2 g	B
706-505-503	C		blau, ~RAL 5012 BLUE, ~RAL 5012	0,2 g	B
706-505-502	B		natur/weiss, ~RAL 9001 NATURAL/WHITE, ~RAL 9001	0,2 g	B
706-505-501	A		schwarz, ~RAL 9011 BLACK, ~RAL 9011	0,2 g	B

This materials contain information protected by copyright. No part of this materials may be photocopied, otherwise reproduced or translated into another language without the prior written consent of Hirschmann. All rights reserved.

Plot from: TNATTER on 06.08.2022 Doc.Vers. 02 Valid from: 20210215 Valid until: ... Status: Kundenfreigabe



max. Formversatz ±0.1
MAX. SPLIT LINE ±0.1

Toleranzen fuer nicht tolerierte Masse:
1. Winkelmasse: (in °)
Fuer alle Winkelmasse gilt ±2°
2. Radien : (in mm)

bis 1	1-3	3-10	10-20	20-30	30-50
±0.2	±0.3	±0.4	±0.5	±1	±2

3. Laengenmasse :
DIN 2768-mH
4. Allgemeintoleranz fuer Symmetrie: $\begin{matrix} \square \\ \square \\ \square \end{matrix} 0.2$

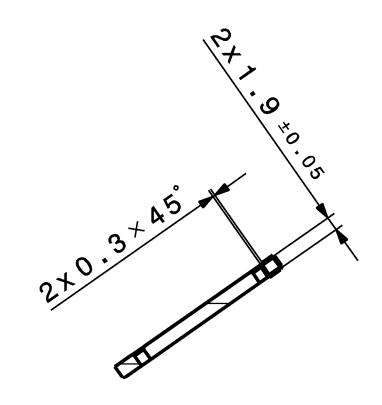
TOLERANCES FOR UNTOLERATED DIMENSIONS:
1. ANGLE-DIMENSIONS (IN °)
TOLERANCE FOR ALL ANGLE-DIMENSIONS: ±2°
2. RADII : (IN mm)

TO 1	1-3	3-10	10-20	20-30	30-50
±0.2	±0.3	±0.4	±0.5	±1	±2

3. DISTANCE-DIMENSIONS:
DIN 2768-mH
4. GENERAL TOLERANCE FOR SYMMETRY: $\begin{matrix} \square \\ \square \\ \square \end{matrix} 0.2$

Bemerkungen:

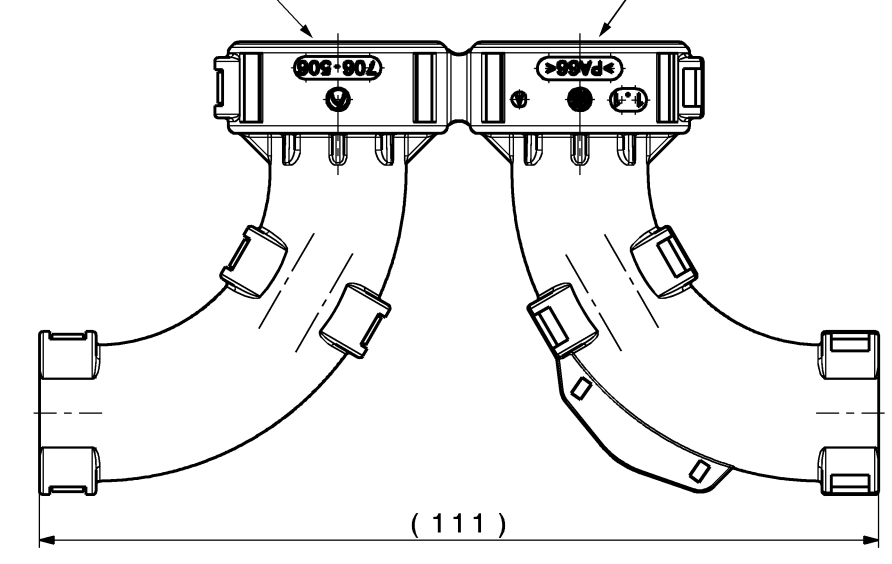
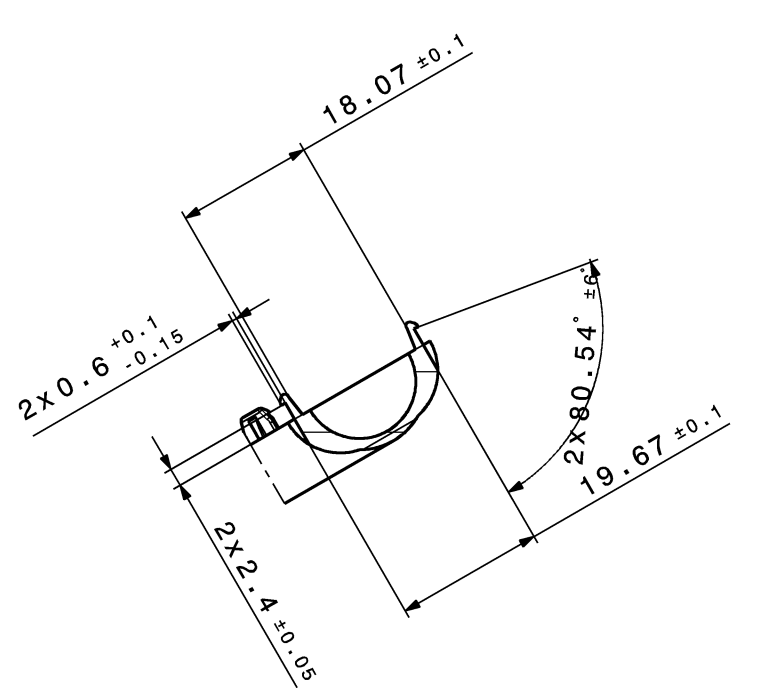
- COMMENTS:
1. massgebend ist der deutsche Text / GERMAN TEXT IS VALID
 2. unbemaste Radien R0.3 +/- 0.1mm / UNDIMENSIONED RADII R0.3 +/-0.1mm
 3. Funktionsbestimmende Maße, die mit \square gekennzeichnet sind, werden im EMPB dokumentiert. Nicht gekennzeichnete Maße werde ebenfalls ausgemessen, aber nicht im EMPB dokumentiert. Abweichungen sind zu korrigieren. DIMENSIONS WITH \square ARE DOCUMENTED IN THE INITIAL SAMPLE INSPECTION PREORT (ISIR). UNMARKED DIMENSIONS ARE ALSO MEASURED BUT NOT DOCUMENTED IN THE ISIR. VARIATIONS MUST BE CORRECTED.
 4. Teil entspricht Altautorichtlinie nach DBL 8585
PART CORRESPONDS TO SCRAP CAR GUIDELINE DBL 8585
 5. Teilekennzeichnung angelehnt an MBN 10435
PART IDENTIFICATION SIMILAR MBN 10435



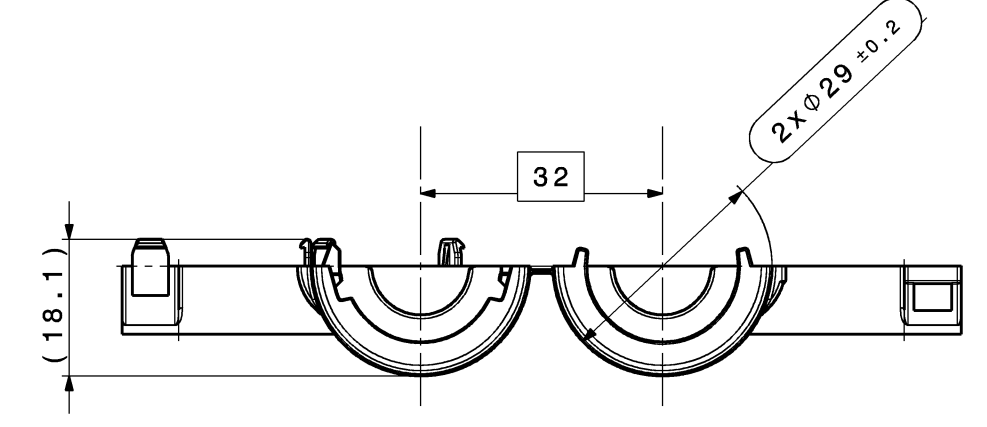
- Firmenzeichen vertieft
COMPANY SIGN RECESSED
- Hirschmann Nr. vertieft, erhaben
HIRSCHMANN NO. RECESSED, RAISED

- Materialkennzeichnung vertieft, erhaben
MATERIAL DESCRIPTION RECESSED, RAISED
- Datumstempel vertieft, erhaben
DATE STAMP RECESSED, RAISED
- Formteilnummer vertieft, erhaben
CAVITY NUMBER RECESSED, RAISED
- HA-Revision vertieft, erhaben
HA-REVISION RECESSED, RAISED

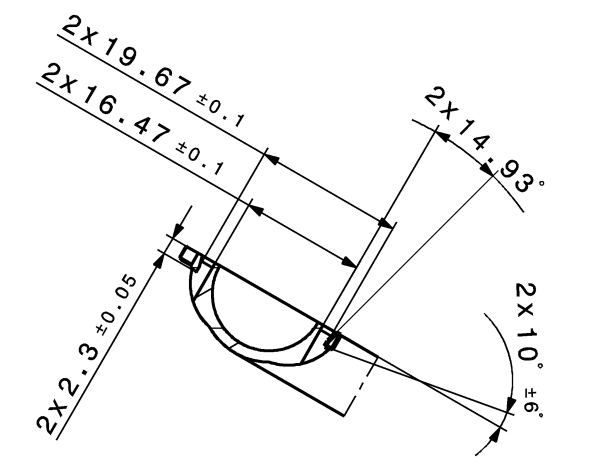
Schnittansicht J-J
Maßstab: 1:1



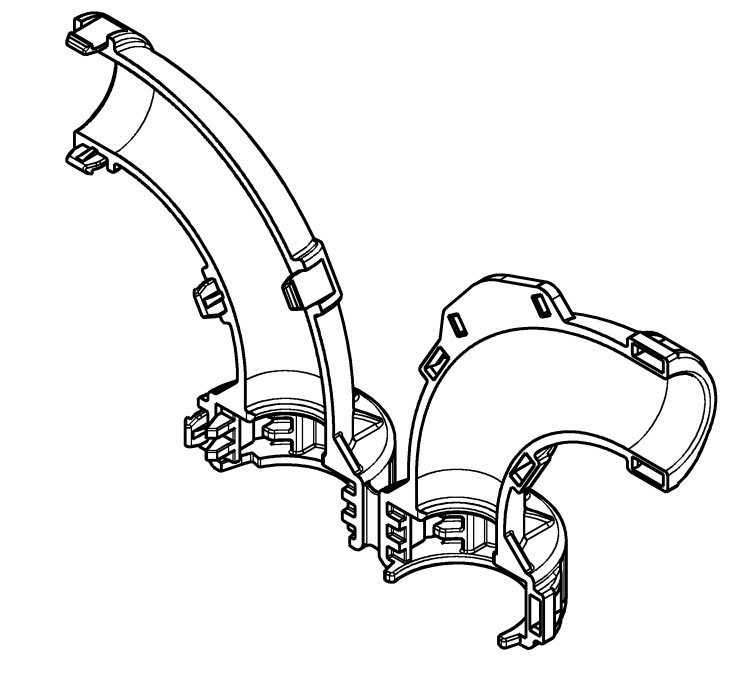
Rückansicht
Maßstab: 1:1



Untersicht
Maßstab: 1:1

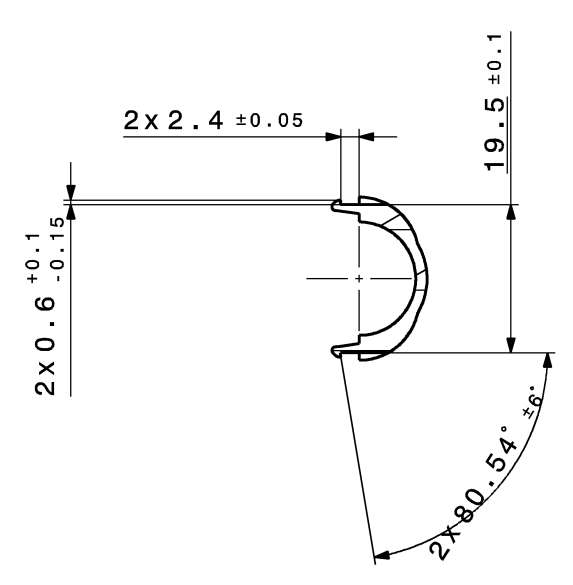


Schnittansicht G-G
Maßstab: 1:1

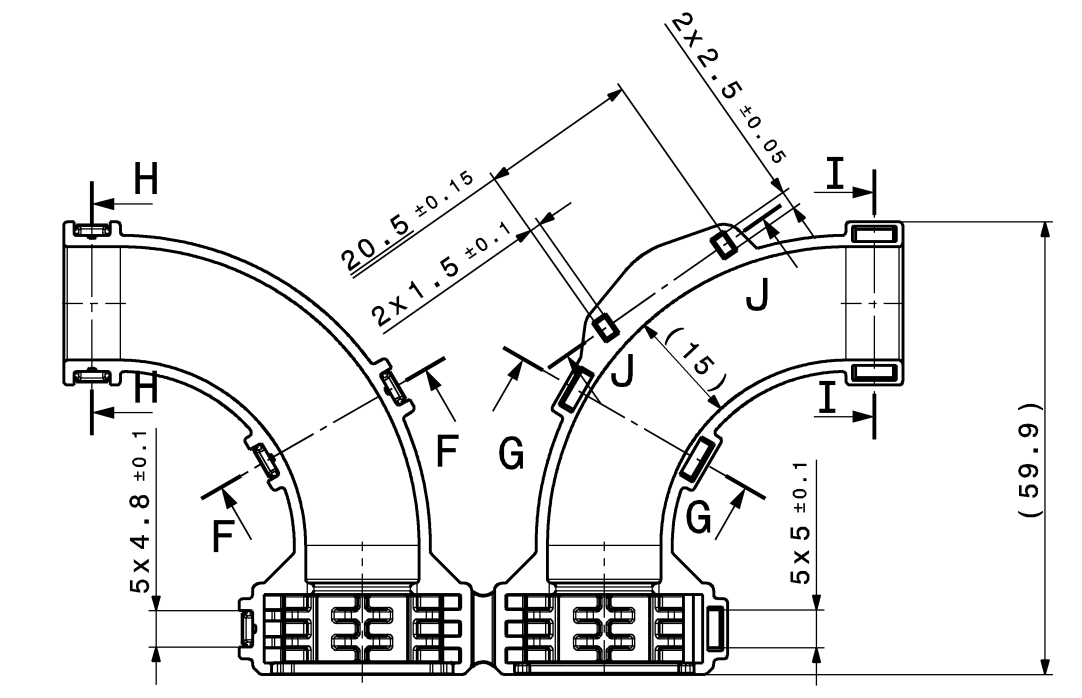


Isometrische Ansicht
Maßstab: 1:1
ISOMETRIC VIEW
SCALE: 1:1

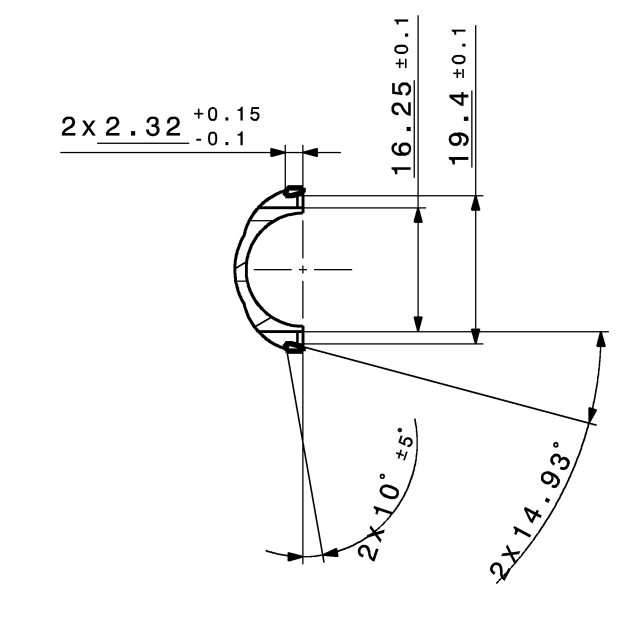
Schnittansicht F-F
Maßstab: 1:1



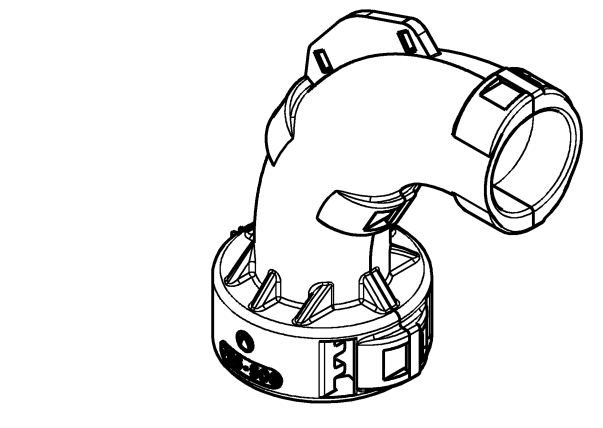
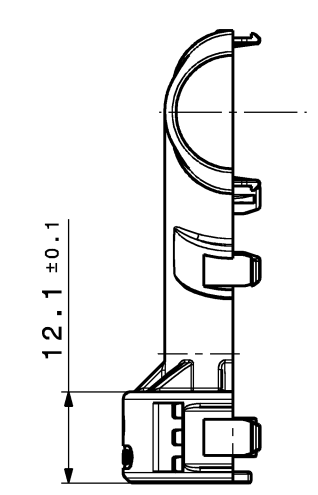
Schnittansicht H-H
Maßstab: 1:1



Schnittansicht I-I
Maßstab: 1:1



Seitenansicht links
Maßstab: 1:1



Isometrische Ansicht geschlossen
Maßstab: 1:1
ISOMETRIC VIEW CLOSED
SCALE: 1:1

706-506-503	PA66 GF25	rot / RED ~ RAL 3024	9,5g	C	2,5mm ² /4mm ² /6mm ²	9,3 - 12,8
Lft. Bestell Nr. ORDER NO.	Material MATERIAL	Farbe COLOUR	Gewicht WEIGHT	HA REV.	Leitungsquerschnitt WIRE CROSS SECTION	Leitungs-Außen Ø CONDUCTOR OUTER DIAMETER

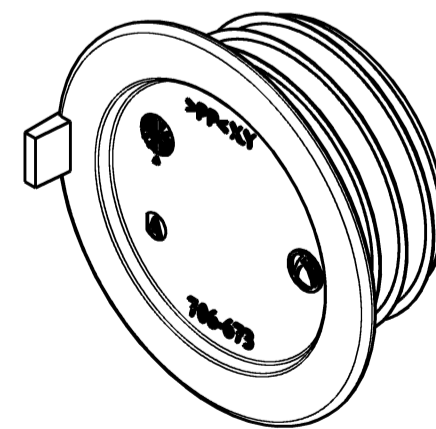
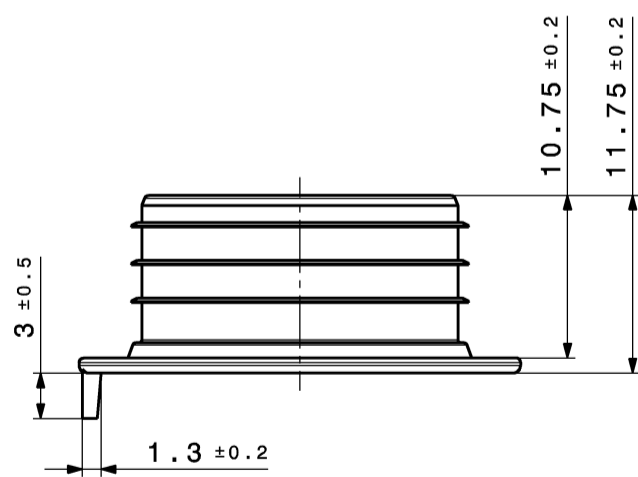
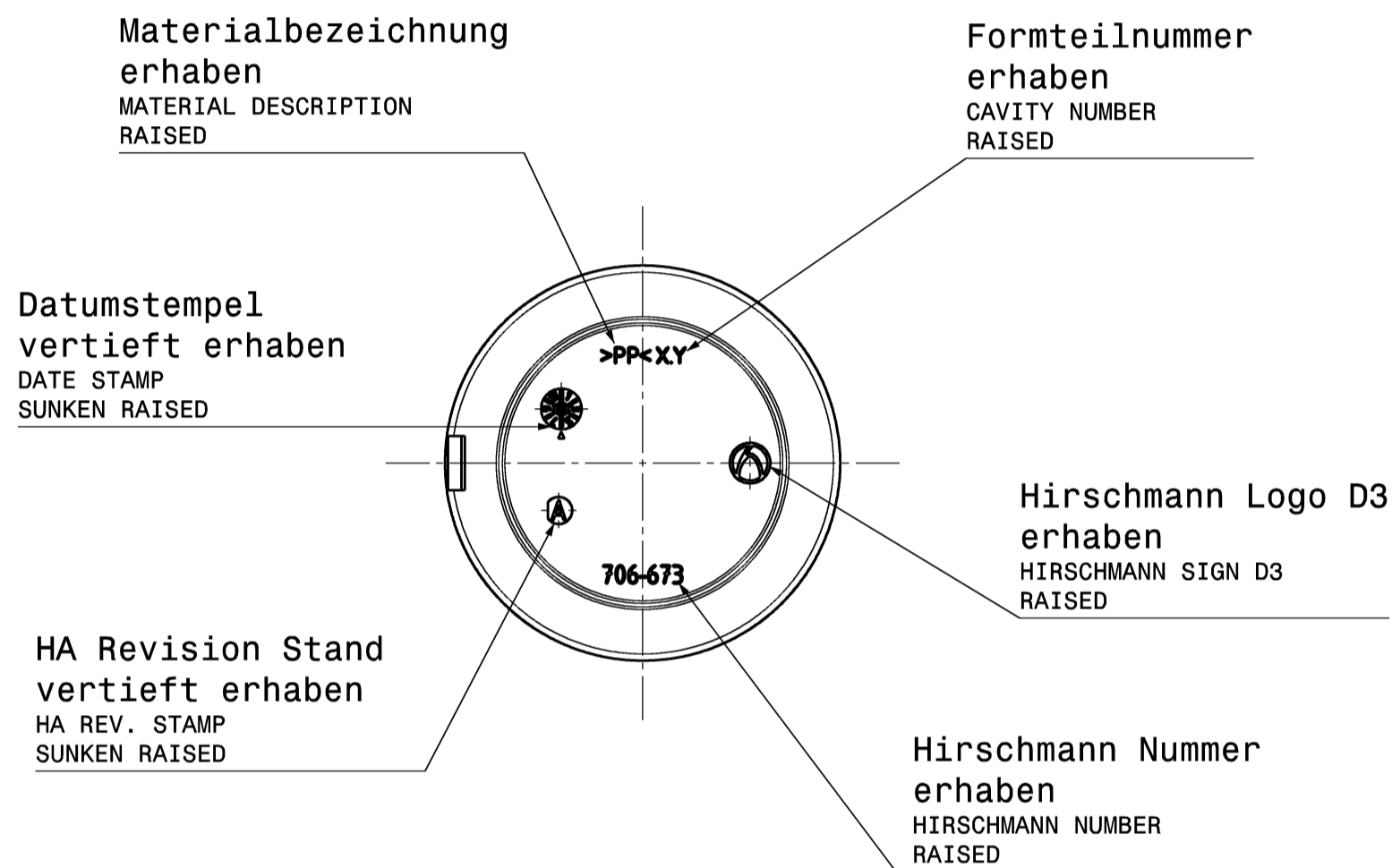
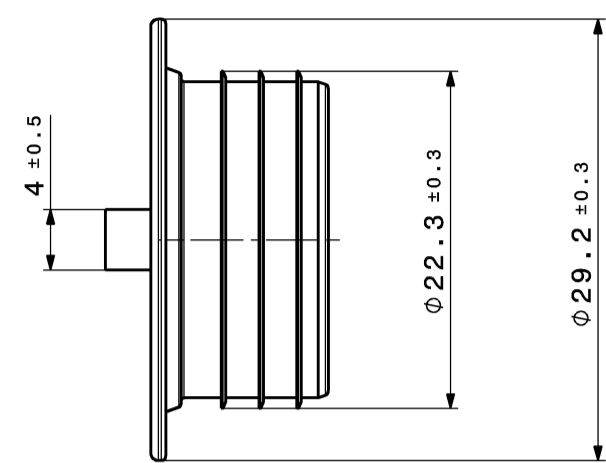
03	adjusting of dimentions; changing tolerances;	02.08.2021	MPO
02	updated design for locking latches;	15.03.2021	FWI
01	Updated locking geometry; Updated bearing for coding-clip; raised revision to B	12.03.2020	RHO
00	Ersterstellung / Initial edition	13.02.2019	JZT

Version	Sub. of	Description of alteration	Date	Drawn
Test instructions				
Crude state	Material	Final state	Gross weight	g/pc
			Final weight	g/pc
Material-Nr. / No.	Tolerances	EN ISO 8015	Surface	cm ² /pc
	Edges	DIN ISO 13715	Scale	1:1
	Geometric tolerances	DIN ISO 1101	Scale	1:1
Date	Name	Dimensions specially checked for acceptance		
Drawn	02.08.2021	M.Poltrum	Title	HPS40-2 Winkelkappe
Checked	24.02.2022	T.Kleiner	Type	Hirschmann Power Star
Released	24.02.2022	T.Kleiner	SS	DIN A1
HIRSCHMANN AUTOMOTIVE		Drawing - No. 706-506-...00		
Hersteller: Pappelweg 6-8 A-6800 Rankweil, Österreich		Origin	Replacement	Sheet 1 of 1
Controlled status available in the system!				

This material contains information protected by copyright. Any reproduction or translation into another language without the prior written consent of Hirschmann is prohibited.

Plot from: TMAPPER on 06.06.2022 Doc.Vers. 03 Valid from: 20220412 Valid until: 20220412 Status: Kundenfreigabe

This materials contain information protected by copyright. No part of this materials may be photocopied, otherwise reproduced or translated into another language without the prior written consent of Hirschmann. All rights reserved.
 Diese Unterlage ist unser Eigentum. Jede Vervielfältigung, Verwertung, Mitteilung bzw. Weitergabe an Dritte ohne unsere vorherige Zustimmung ist untersagt. Zuwiderhandlungen verpflichten zu Schadenersatz. Alle Rechte fuer den Fall der Patenterteilung, Gebrauchs- bzw. Geschmacks-mustereintragung vorbehalten.



Isometrische Ansicht
 Maßstab: 2:1
 ISOMETRIC VIEW
 SCALE: 2:1

- Toleranzen fuer nicht tolerierte Masse:
- Winkelmasse: (in °)
Fuer alle Winkelmasse gilt ±2°
 - Radien : (in mm)
- | | | | | | |
|-------|------|------|-------|-------|-------|
| bis 1 | 1-3 | 3-10 | 10-20 | 20-30 | 30-50 |
| ±0.2 | ±0.3 | ±0.4 | ±0.5 | ±1 | ±2 |
- Laengenmasse :
 - Allgemeintoleranz fuer Symmetrie: $\begin{matrix} \equiv \\ \equiv \end{matrix} 0.2$

- TOLERANCES FOR UNTOLERATED DIMENSIONS:
- ANGLE-DIMENSIONS (IN °)
TOLERANCE FOR ALL ANGLE-DIMENSIONS: ±2°
 - RADII : (IN mm)
- | | | | | | |
|------|------|------|-------|-------|-------|
| TO 1 | 1-3 | 3-10 | 10-20 | 20-30 | 30-50 |
| ±0.2 | ±0.3 | ±0.4 | ±0.5 | ±1 | ±2 |
- DISTANCE-DIMENSIONS:
DIN 2768-mH
 - GENERAL TOLERANCE FOR SYMMETRY: $\begin{matrix} \equiv \\ \equiv \end{matrix} 0.2$

Bemerkungen / COMMENTS:

- massgebend ist der deutsche Text / GERMAN TEXT IS VALID
- unbemasste Radien R0,2mm±0,1 / UNDIMENSIONED RADII R0,2mm±0,1
- Fehlende Masse sind dem CAD-Modell zu entnehmen. Hierfuer gelten die angegebenen Allgemeintoleranzen. MISSING DIMENSIONS ALT. RADII SEE ON CAD-MODELL. THEREFORE THE GENERAL-TOLERANCES ARE VALID.
- Teilekennzeichnung angelehnt an DIN 1451 / PART IDENTIFICATION SIMILAR DIN 1451
- Teil entspricht Altautorichtlinie nach EU-Altfahrzeugverordnung 2000/53/EG / PART CORRESPONDS TO SCRAP CAR GUIDELINE ...
- Entformschraegen innerhalb der Toleranzen / DRAFT ANGLE WITHIN TOLERANCE.
- max. Formversatz ±0.05 / MAX. SPLIT LINE ±0.05
- max. Formtrenngrat 0.2 / MAX. BURR 0.2
- Formnestkennzeichnung: X.Y
X = Werkzeug Nr.
Y = Formnest Nr.
MOULD CAVITY MARKING: X.Y
X = MOULD NUMBER
Y = MOULD CAVITY NUMBER
- Verpackung: siehe Verpackungshinweis / PACKING: ACCORDING PACKING GUIDELINE
- Technische Sauberkeit:
metallische Partikel > 600µ nicht zulaessig
nicht metallische Partikel > 1000µ nicht zulaessig
TECHNICAL CLEANLINESS:
METALLIC PARTICLE > 600µ NOT ALLOWED
NOT METALLIC PARTICLE > 1000µ NOT ALLOWED
- Einwegartikel
DISPOSABLE PART

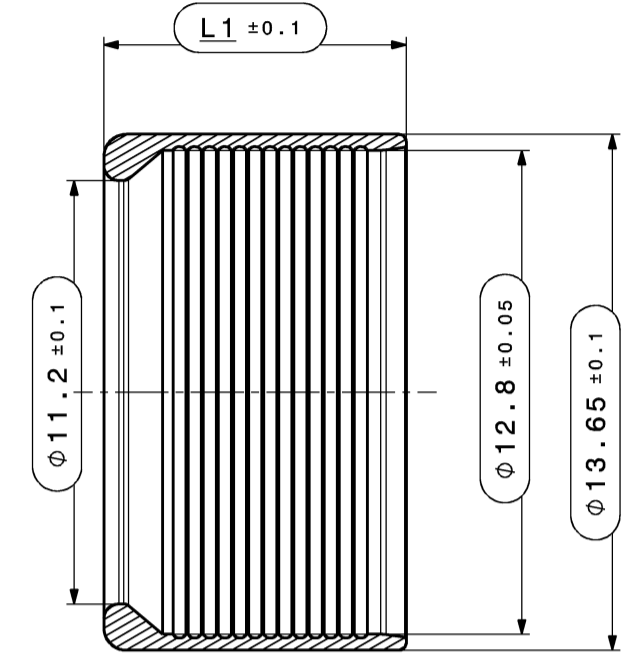
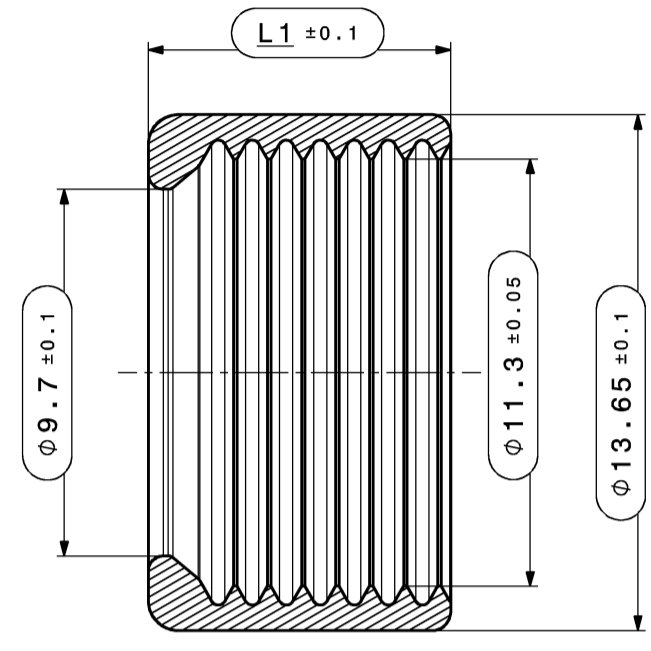
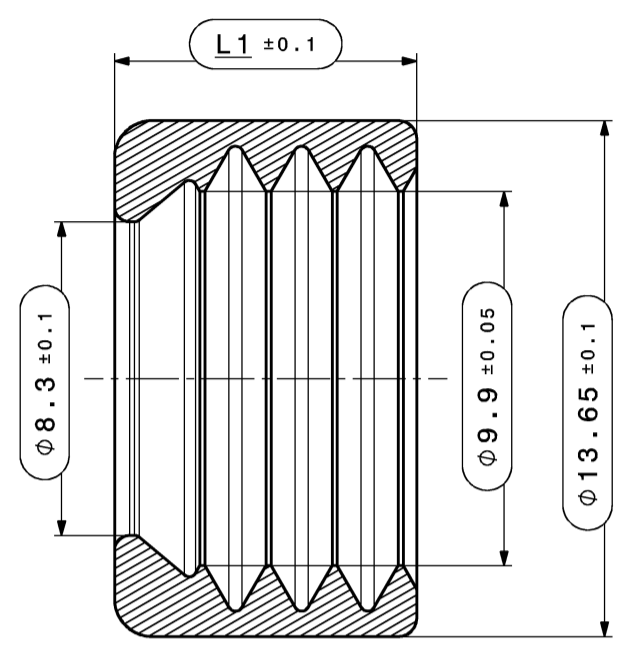
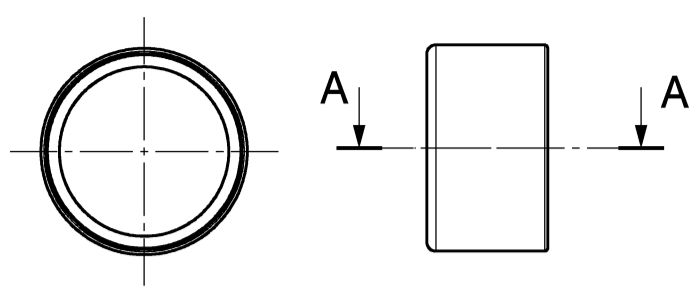
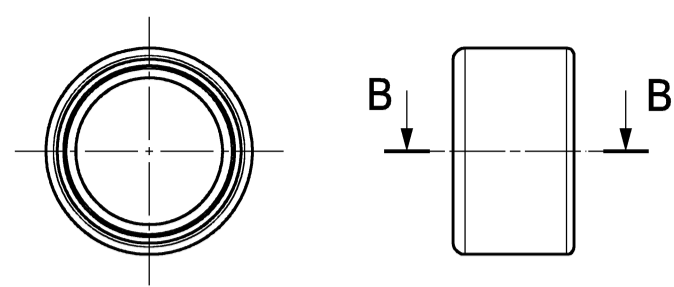
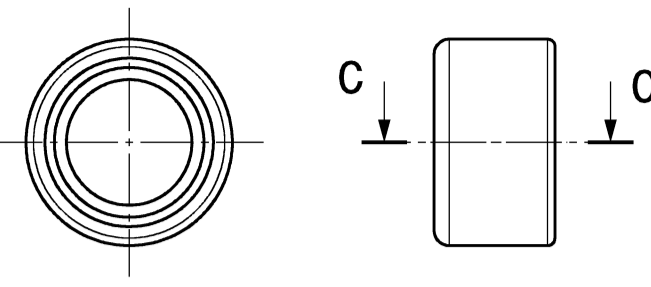
706-673-501	A	natur / NATURAL	PP 400-GA05	1,34g
Erz. Nr. Index PART NUMBER	HA Rev.	Farbe COLOR	Material MATERIAL	Gewicht WEIGHT

00	Ersterstellung / Initial Edition		28.09.2017	BAS
Version	Anzahl numb. of	Aenderungsbeschreibung / description of alteration		Datum date
Pruefvorschriften / test instructions				
Rohzustand / crude state		Werkstoff / material	Fertigzustand / final state	Rohgewicht gross weight
				g/Stk g/pc
				Fertig-gw. final weight
				g/Stk g/pc
Material-Nr. / No.	Toleranzen / tolerances		Oberfl. surface	Abfall scrap
	Werkstueckkanten / edges		cm² /Stk /pc	%
	DIN ISO 13715		dimensions in millimeters	Abfall scrap
	Form- u. Lagetoleranzen / geometric tolerances		Massstab/scale	CAD System/ Version
	DIN ISO 1101		2:1	CATIA V5
Gezeichnet drawn	Datum / date	Name / name	Benennung title	
28.09.2017		Bas	Transporterschutzkappe Aggregateanschluss	
geprueft checked	07.09.2018	Weiss	Typ type	
freigegeben released	07.09.2018	Schmid	Hirschmann PowerStar40-2	
HIRSCHMANN AUTOMOTIVE		BS		Blatt / Sheet von / of
Oberer Paspelweg 6-8 A-6830 Rankweil-Brederis		Zeichnungs - Nr. drawing - No.		1
		706-673-...00		
Ursprung / origin		Ersatz fuer replacement		DNR 100000231209

Index 501/511

Index 502/512

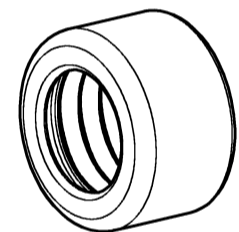
Index 503/513



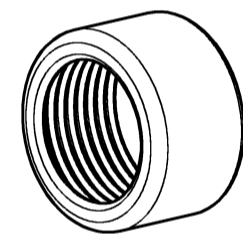
Schnitt C-C
Maßstab: 5:1
SECTION CUT C-C
SCALE: 5:1

Schnitt B-B
Maßstab: 5:1
SECTION CUT B-B
SCALE: 5:1

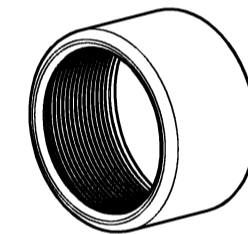
Schnitt A-A
Maßstab: 5:1
SECTION CUT A-A
SCALE: 5:1



Isometrische Ansicht
ISOMETRIC VIEW



Isometrische Ansicht
ISOMETRIC VIEW



Isometrische Ansicht
ISOMETRIC VIEW

max. Formversatz ±0.1
MAX. SPLIT LINE ±0.1

Toleranzen fuer nicht tolerierte Masse:

- Winkelmasse: (in °)
Fuer alle Winkelmasse gilt ±2°
- Radien: (in mm)
- Laengenmasse:
DIN 2768-mH
- Allgemeintoleranz fuer Symmetrie: ± 0.2

bis 1	1-3	3-10	10-20	20-30	30-50
±0.2	±0.3	±0.4	±0.5	±1	±2

TOLERANCES FOR UNTOLERATED DIMENSIONS:

- ANGLE-DIMENSIONS (IN °)
TOLERANCE FOR ALL ANGLE-DIMENSIONS: ±2°
- RADII: (IN mm)
- DISTANCE-DIMENSIONS:
DIN 2768-mH
- GENERAL TOLERANCE FOR SYMMETRY: ± 0.2

TO 1	1-3	3-10	10-20	20-30	30-50
±0.2	±0.3	±0.4	±0.5	±1	±2

Bemerkungen:

COMMENTS:

- massgebend ist der deutsche Text / GERMAN TEXT IS VALID
- unbemasste Radien R0.3 +/- 0.1mm / UNDIMENSIONED RADII R0.3 +/- 0.1mm
- Funktionsbestimmende Maße, die mit \varnothing gekennzeichnet sind, werden im EMPB dokumentiert. Nicht gekennzeichnete Maße werde ebenfalls ausgemessen, aber nicht im EMPB dokumentiert. Abweichungen sind zu korrigieren.
DIMENSIONS WITH \varnothing ARE DOCUMENTED IN THE INITIAL SAMPLE INSPECTION PREORT (ISIR).
UNMARKED DIMENSIONS ARE ALSO MEASURED BUT NOT DOCUMENTED IN THE ISIR. VARIATIONS MUST BE CORRECTED.
- Teil entspricht Altautorichtlinie nach DBL 8585
PART CORRESPONDS TO SCRAP CAR GUIDELINE DBL 8585

01

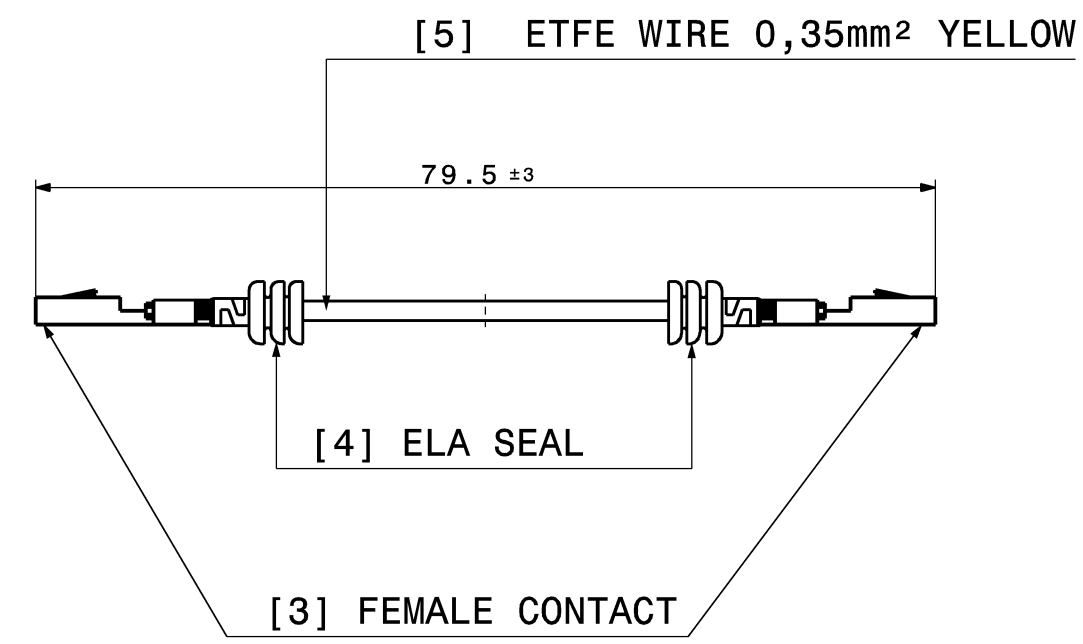
709-841-513	Kontakthuese lang CONTACT SLEEVE LONG	6mm ²	10	CuZn21Si3	2 g	A
709-841-512	Kontakthuese lang CONTACT SLEEVE LONG	4mm ²		CuZn21Si3	3,3 g	A
709-841-511	Kontakthuese lang CONTACT SLEEVE LONG	2,5mm ²		CuZn21Si3	4,5 g	A
709-841-503	Kontakthuese CONTACT SLEEVE	6mm ²	8	CuZn21Si3	2 g	A
709-841-502	Kontakthuese CONTACT SLEEVE	4mm ²		CuZn21Si3	3 g	A
709-841-501	Kontakthuese CONTACT SLEEVE	2,5mm ²		CuZn21Si3	4 g	A
Lft. Bestell Nr. ORDER NO.	Benennung TITLE	Leitungsquerschnitt WIRE CROSS SECTION	L1	Material MATERIAL	Gewicht WEIGHT	HA REV.

01	added index 511, 512, 513; Erstellung / Initial edition	25.05.2021	rth
00		27.09.2017	JZI
Version	Num. of	Description of alteration	Date
Test instructions			
Crude state	Material	Final state	Gross weight g/pc
			Final weight g/pc
Material-No.	Tolerances	DIN 2768-mH	Surface cm ² /pc
Edges		DIN ISO 13715	Scrap %
Geometric tolerances		DIN ISO 1101	dimensions in millimeters
Date		Name	Scale 2:1
Drawn	25.05.2021	R.Thöny	Title Kontakthuese HIRSCHMANN PowerStar 40-2
Checked	07.06.2021	T.Kleiner	
Released	07.06.2021	T.Kleiner	
HIRSCHMANN AUTOMOTIVE		Drawing - No. 709-841-...00	
Oberer Paspelweg 6-8 A-6830 Rankweil-Brederis		Sheet 1 of 1	
Origin		Replacement	
		DNR 10000231170	

This materials contain information protected by copyright. No part of this materials may be photocopied, otherwise reproduced or translated into another language without the prior written consent of Hirschmann. All rights reserved.

Plot from: TNAITER on 07.10.2021 Doc.Vers. 01 Valid from: 20210607 Valid until: ... Status: Kundenfreigabe

SHORT CIRCUIT BAR



IDENTIFICATION OF SINGLE PART [1]:
 - MATERIAL RAISED
 - HIRSCHMANN NUMBER OF SINGLE PART RAISED
 - MOLD CAVITY NUMBER RAISED
 >PA< 706-886 Y.X

- NOTES:
 1. UNDIMENSIONED RADII R0.3 +/-0.1mm
 2. DIMENSIONS MARKED WITH \varnothing ARE DOCUMENTED IN THE INITIAL SAMPLE INSPECTION REPORT (ISIR).
 3. MAX. 30% RECLAIM ACCEPTABLE

±0.2
 +0.2
 MAX. SPLIT LINE ±0.1

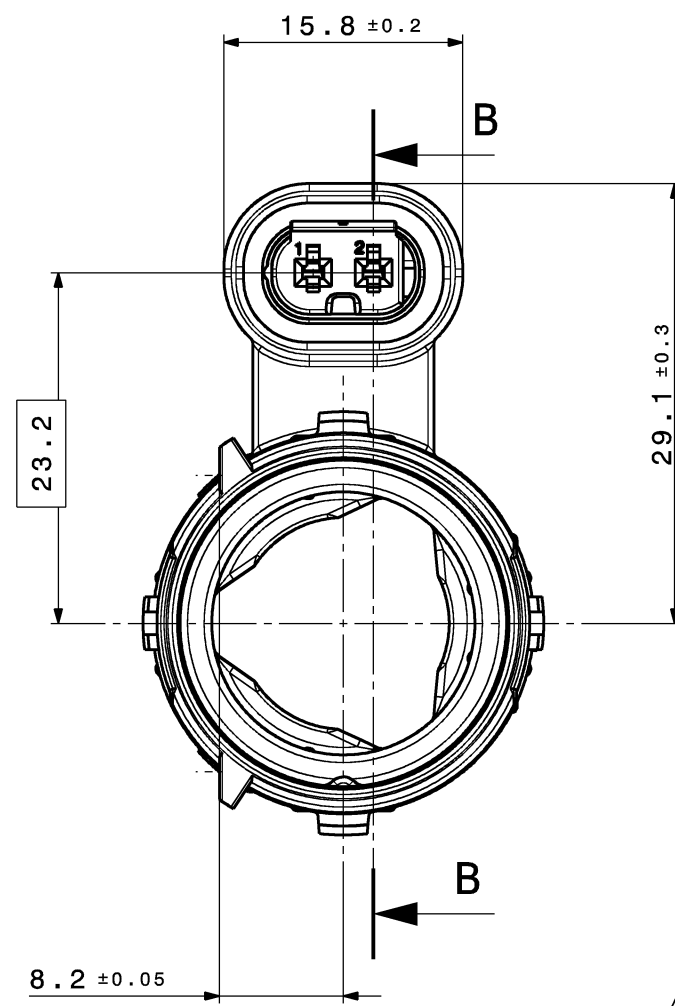
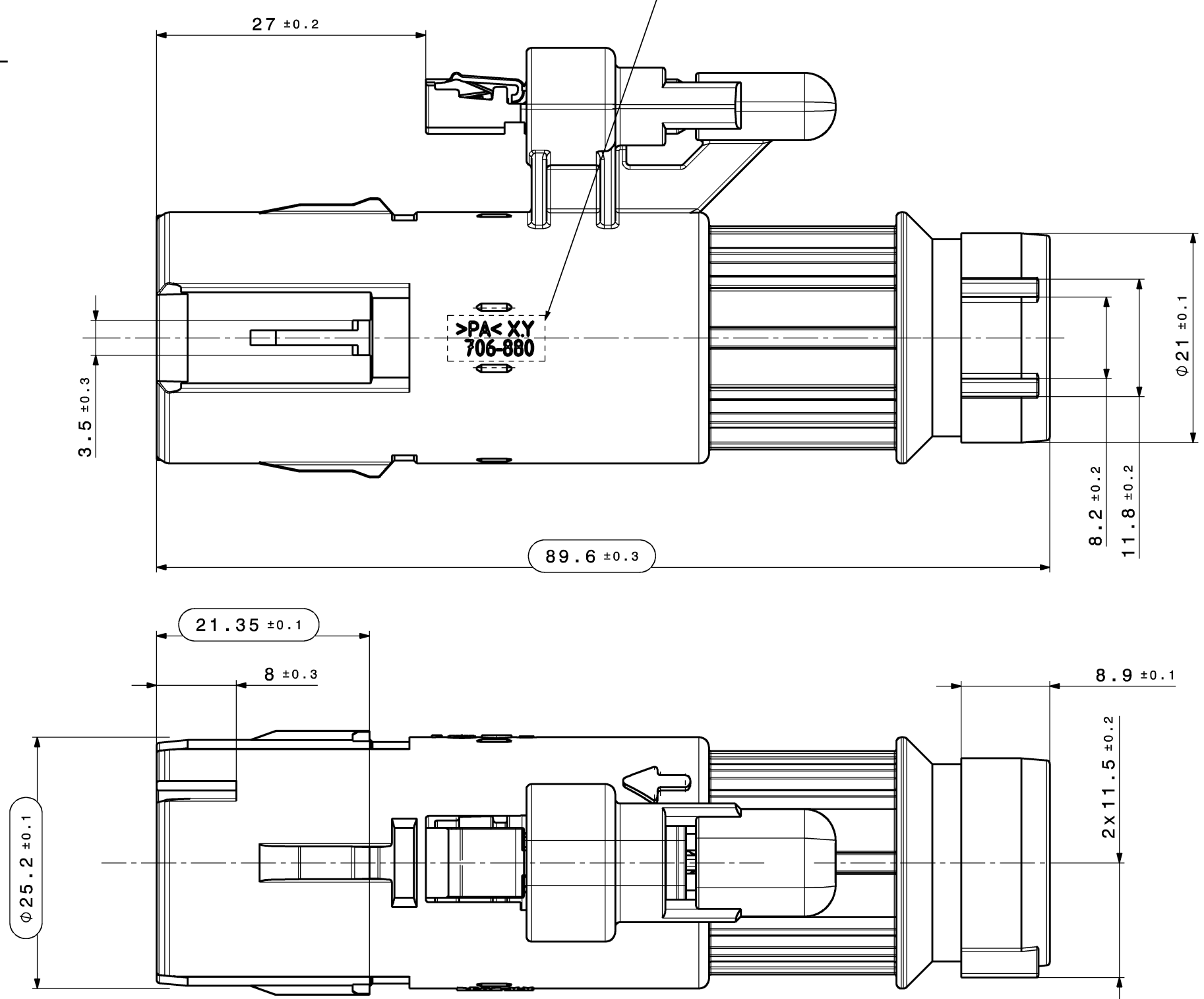
TOLERANCES FOR UNTOLERATED DIMENSIONS:

- ANGLE-DIMENSIONS (IN °)
TOLERANCE FOR ALL ANGLE-DIMENSIONS: ±2°
- RADII : (IN mm)

TO 1	1-3	3-10	10-20	20-30	30-50
±0.2	±0.3	±0.4	±0.5	±1	±2
- DISTANCE-DIMENSIONS:
DIN 2768-mH
- GENERAL TOLERANCE FOR SYMMETRY: \varnothing 0.2

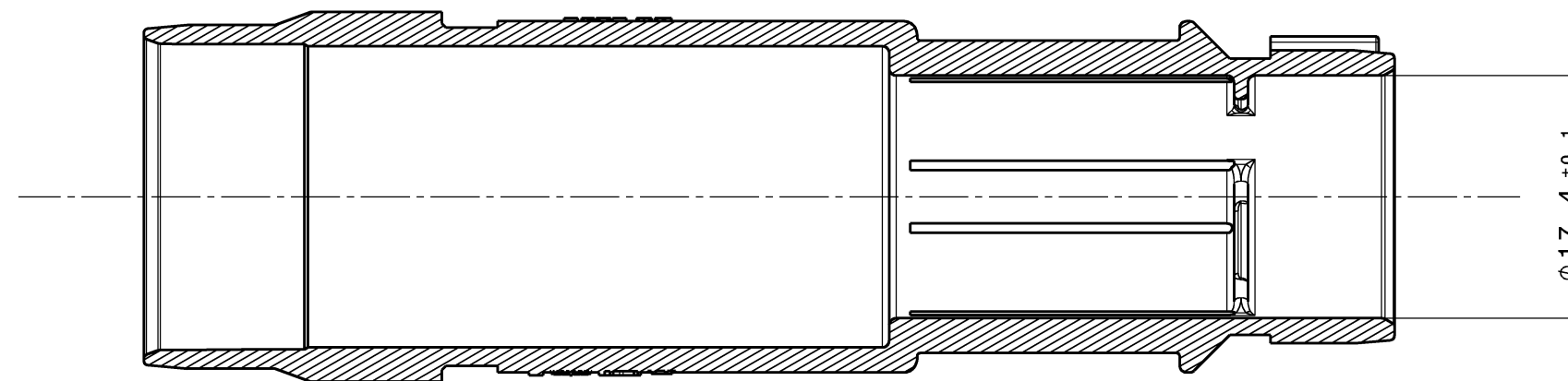
TABLE OF INDIVIDUAL PARTS TB-PLASTIC HOUSING			
POS.	DESCRIPTION	COLOR	MATERIAL
1	PLASTIC HOUSING	ORANGE, SIMILAR RAL 2003	PA66 GF35
2	SealStar 1.2 FEMALE HOUSING	NATURE / WHITE, SIMILAR RAL 9001	PA66 GF25
2.1	SealStar 1.2 SEAL	NATURE	LSR 50 Shore
3	FEMALE CONTACT	MLK: KOSTAL-NO.: 3 21 24 73411 3	CuSn / Ag
		MCON: TYCO-NO.: 7-1452665-3	CuSn / Ag
4	ELA SEAL	MLK: KOSTAL-NO.: 1 08 00 50725 0	MAIZ YELLOW, SIMILAR RAL 1006
		MCON: TYCO-NO.: 967 067-2	YELLOW
5	WIRE	YELLOW	ETFE

INDEX 501



[2] SealStar 1.2 FEMALE HOUSING
 [2.1] SealStar 1.2 SEAL
 [3],[4],[5] SHORT CIRCUIT BAR
 [1] PLASTIC HOUSING

SECTION CUT B-B



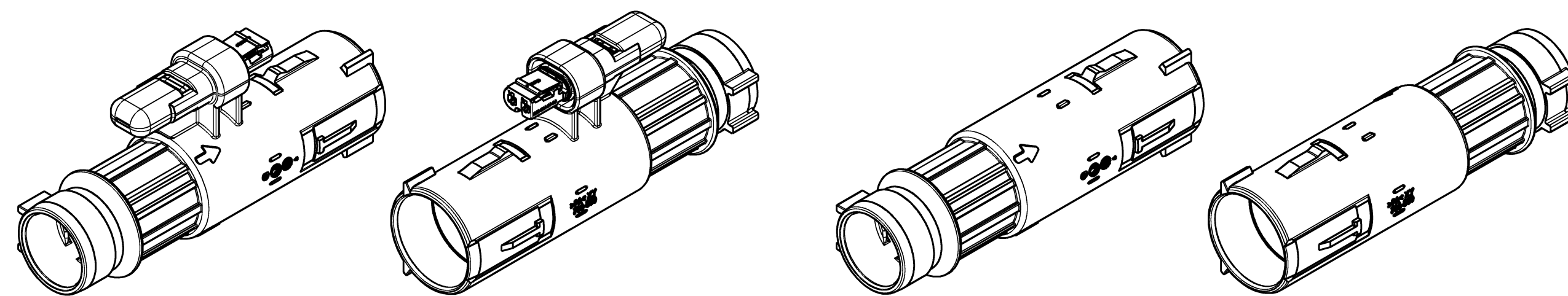
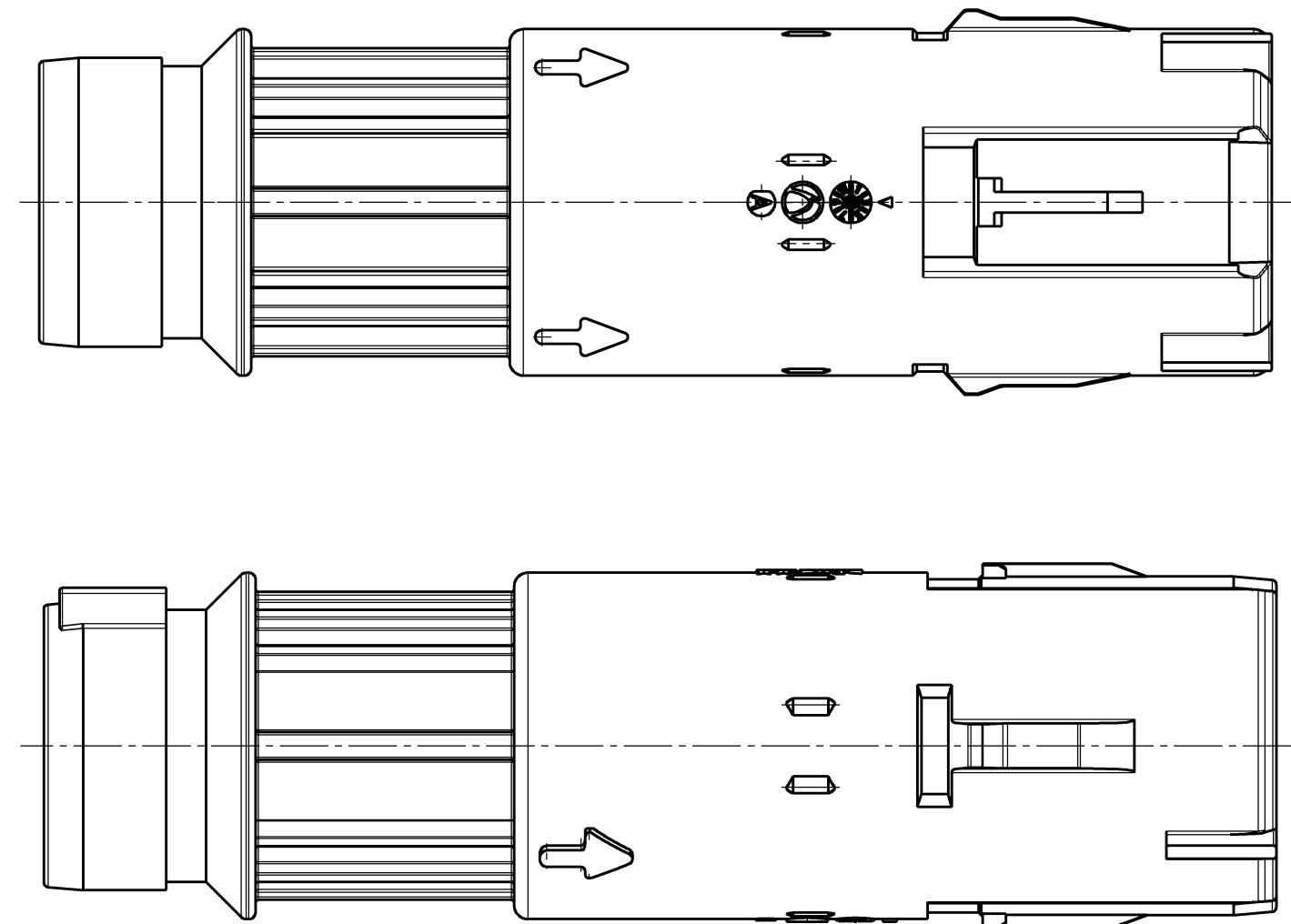
SECTION CUT C-C

IDENTIFICATION OF SINGLE PART [1]:
 - DATE STAMP M3 RAISED
 - HIRSCHMANN LOGO RAISED
 - HIRSCHMANN ASSEMBLY REVISION RAISED



INDEX 502

WITHOUT INTERLOCK CONNECTION
 REMAINING DIMENSIONS SEE INDEX 501



ISOMETRIC VIEW IN-LINE PLASTIC HOUSING
 SCALE: 1:1

ISOMETRIC VIEW IN-LINE PLASTIC HOUSING
 SCALE: 1:1

ORDER NO.	TITLE	HVIL	WEIGHT	HA REV.
706-880-502	HPS IN-LINE LOCKING SLEEVE WITHOUT HVIL	NO	16,65g	A
810-000-501	HPS IN-LINE LOCKING SLEEVE WITH HVIL	YES	18,95g	A

00	Ersterstellung / Initial edition	11.01.2022	PGR
Version	Mod. nr.	Description of alteration	Date
Test instructions			
Crude state	Material	Final state	Gross weight g/pc
			Final weight g/pc
Material-Nr. / No.	Tolerances	EN ISO 8015	Surface cm²/pc
	Edges	DIN ISO 13715	Scale 2:1
	Geometric tolerances	DIN ISO 1101	GD System Version CATIA V5
Drawn	Date	Name	Dimensions specially checked for acceptance
11.01.2022		J. Immler	
Checked	17.02.2022	A. Starz	Title HPS IN-LINE CONNECTOR LOCKING SLEEVE
Released	17.02.2022	A. Starz	Type
HIRSCHMANN AUTOMOTIVE		SS	Drawing - No. 810-000-...00
Hersteller: Papstleimp 6-S A-680 Hammel-Straderica		Origin	Replacement
Controlled status available in the system!			Sheet 1 of 1

This material contains information protected by copyright. Any reproduction or translation into another language without the prior written consent of Hirschmann is prohibited.

Valid from: 20220217 Doc.Vers. 00 Valid until: ... Status: Freigegeben

MAX. SPLIT LINE ±0.1

TOLERANCES FOR UNTOLERATED DIMENSIONS:
 1. ANGLE-DIMENSIONS (IN °)
 TOLERANCE FOR ALL ANGLE-DIMENSIONS: ±2°
 2. RADII : (IN mm)
 TO 1 | 1-3 | 3-10 | 10-20 | 20-30 | 30-50
 ±0.2 | ±0.3 | ±0.4 | ±0.5 | ±1 | ±2
 3. DISTANCE-DIMENSIONS:
 DIN 2768-mH
 4. GENERAL TOLERANCE FOR SYMMETRY: ±0.2

NOTES:

- UNDIMENSIONED RADII R0.2mm
- DIMENSIONS WITH  ARE DOCUMENTED IN THE INITIAL SAMPLE INSPECTION REPORT (ISIR).

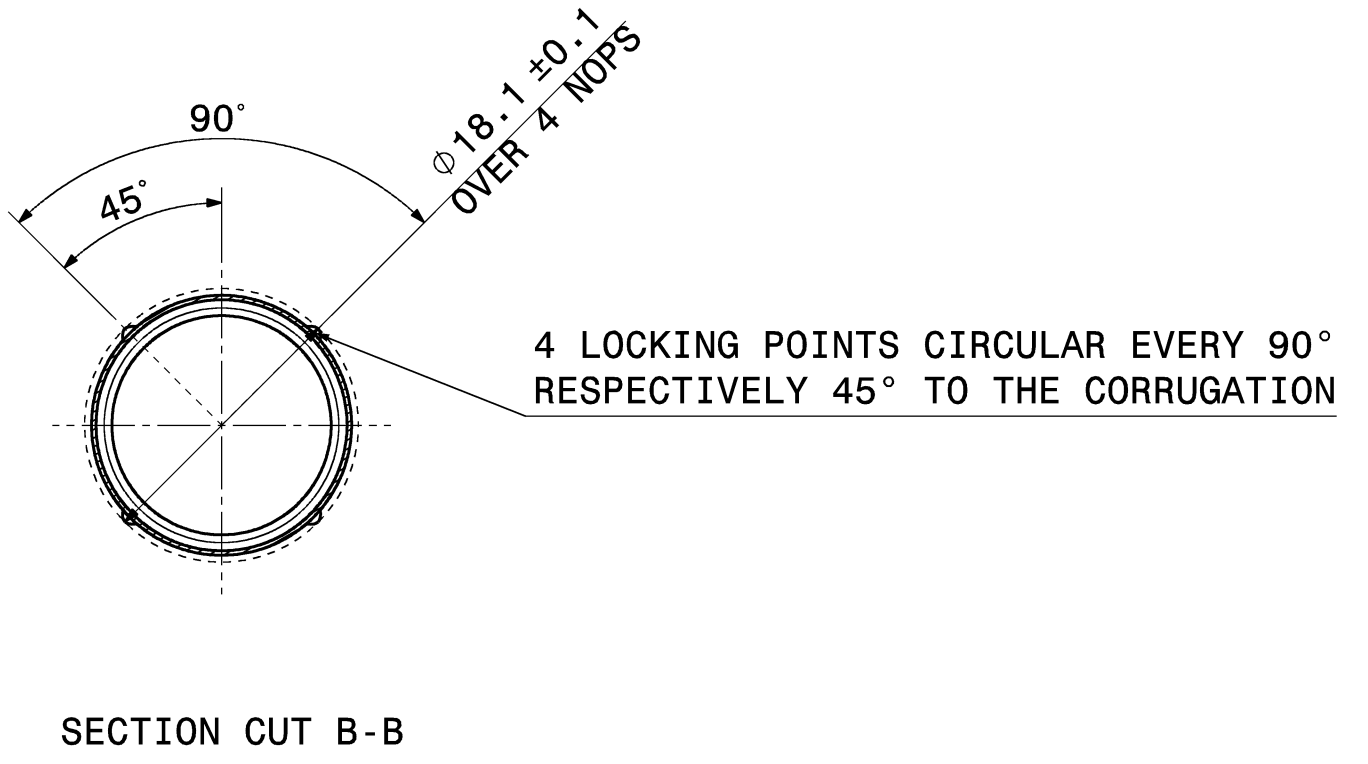
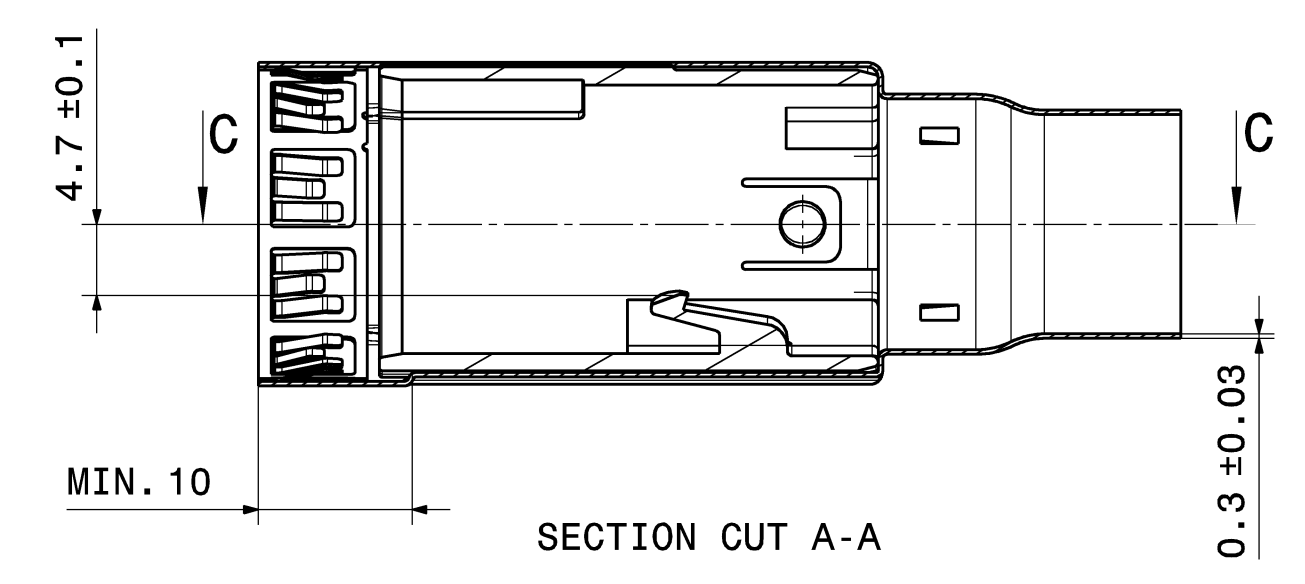
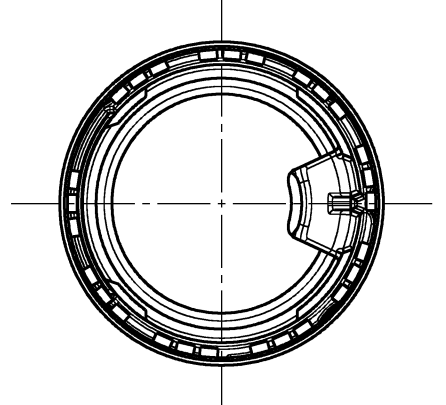
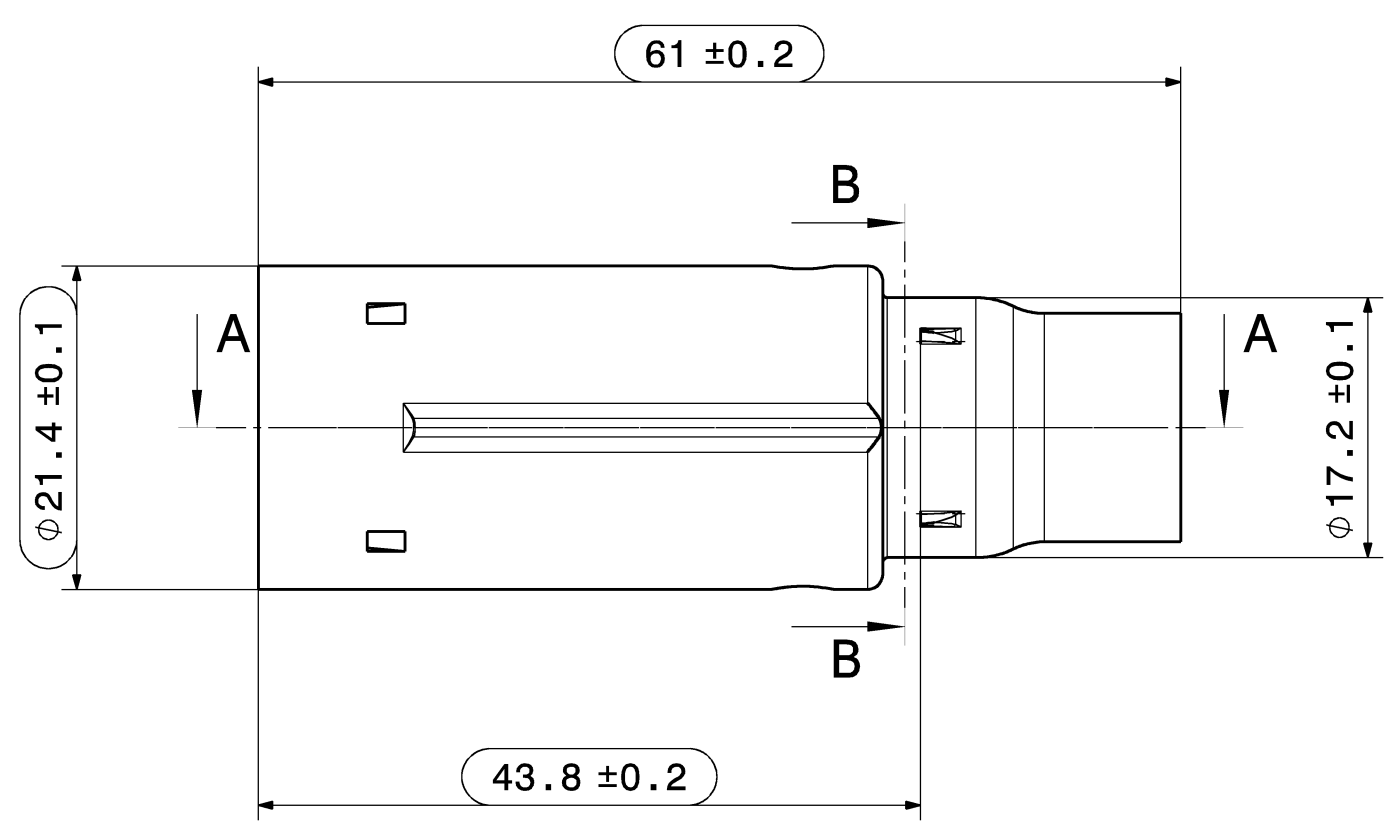
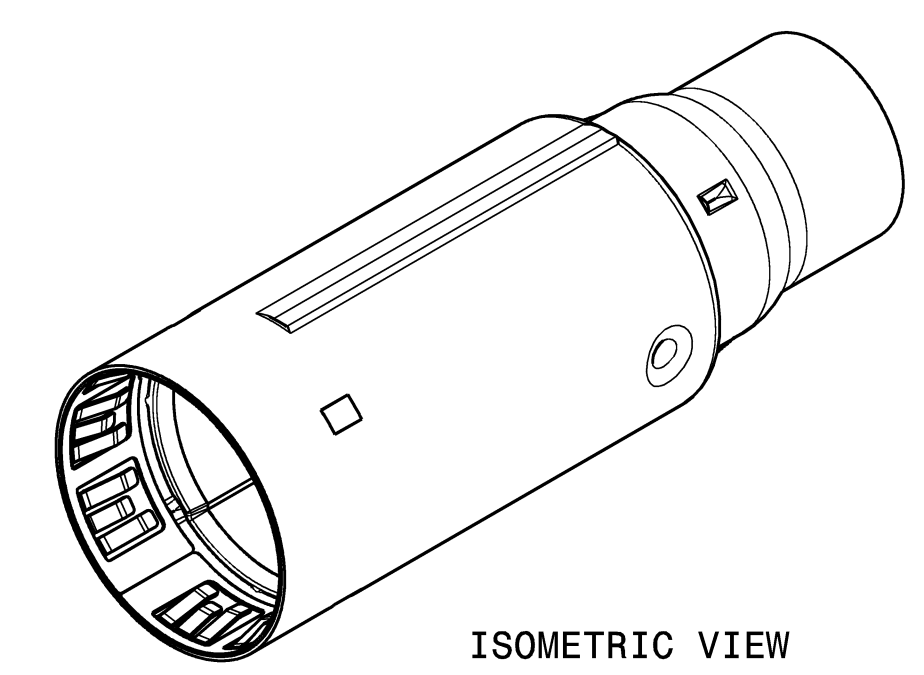
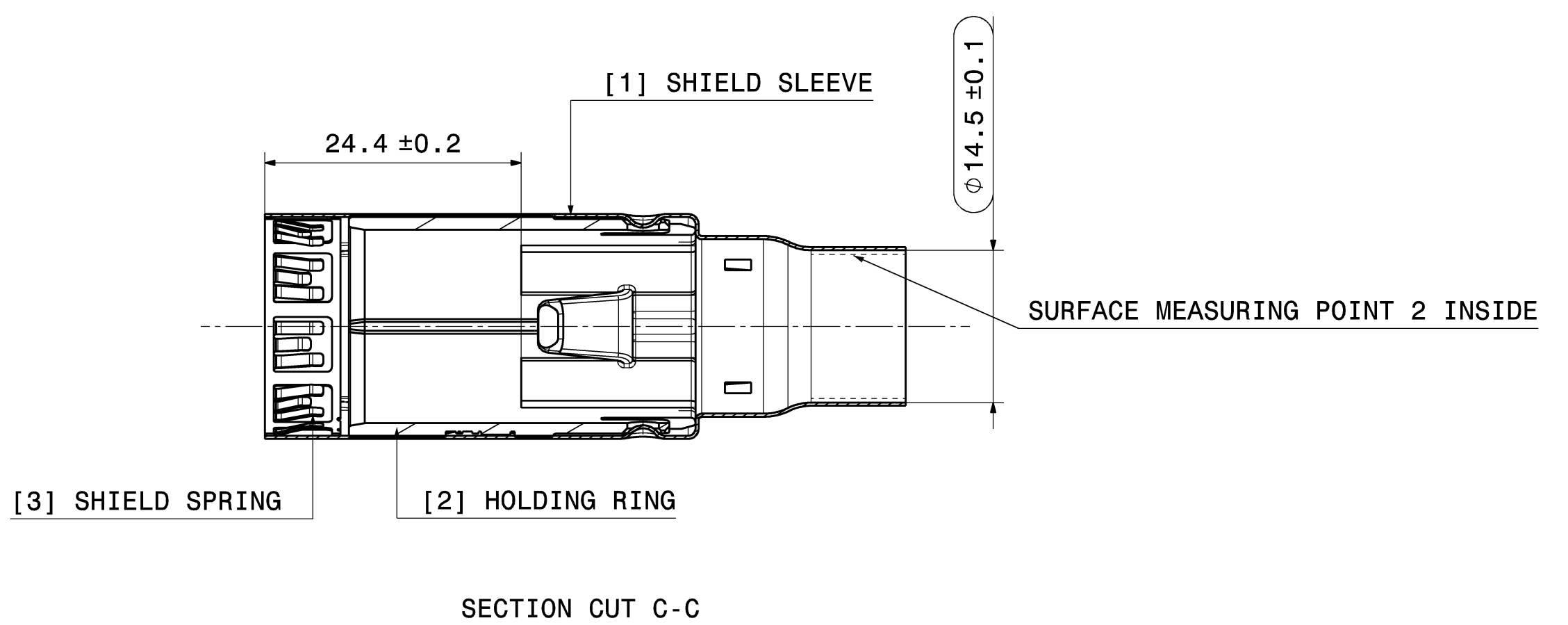


TABLE OF INDIVIDUAL PARTS TB			
POS.	DESCRIPTION	COLOR	MATERIAL / SURFACE
1	SHIELD SLEEVE		CuZn28 / Sn
2	HOLDING RING	BLACK, SIMILAR RAL 9011	PBT
3	SHIELD SPRING		Cu ALLOY / PARTIAL Ag



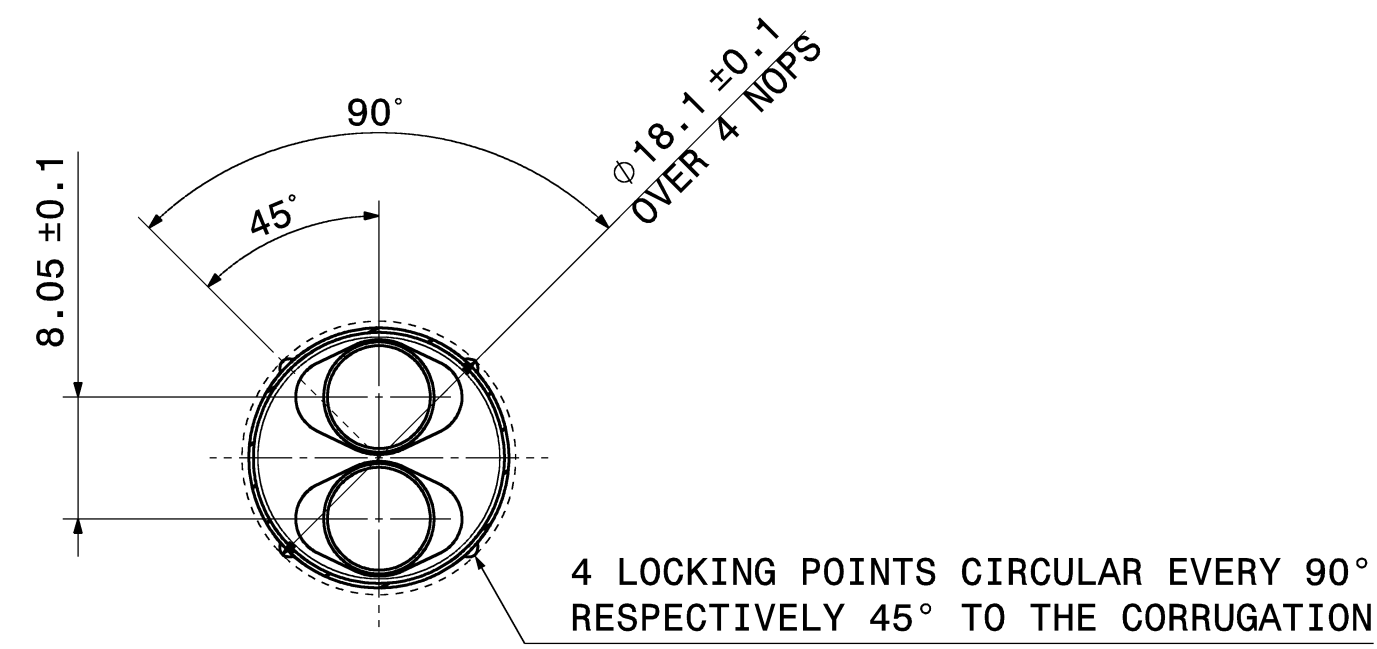
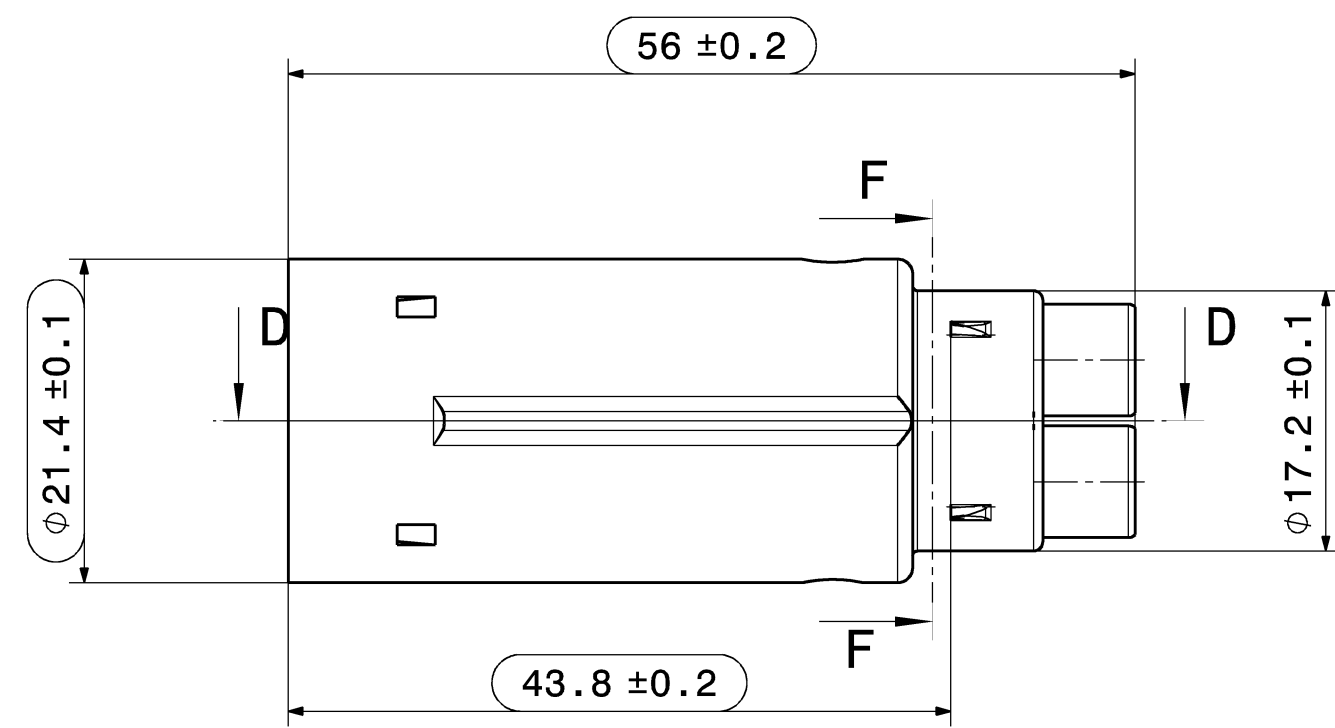
ORDER NO.	TITLE	WEIGHT	HA	REV.
810-001-503	HPS IN-LINE SHIELDING SLEEVE SCC 6mm ²	14,2g		A
810-001-502	HPS IN-LINE SHIELDING SLEEVE SCC 4mm ²	13g		A
810-001-501	HPS IN-LINE SHIELDING SLEEVE MCC	13,2g		A

00	Ersterstellung / Initial edition	11.01.2022	PGR
Version	Sub. of	Description of alteration	Date
Test instructions			
Crude state	Material	Final state	Gross weight g/pc
			Final weight g/pc
Material-Nr. / No.	Tolerances	EN ISO 8015	Surface
	Edges	DIN ISO 13715	Scale
	Geometric tolerances	DIN ISO 1101	Scale 2:1
Drawn	Date	Name	Dimensions specially checked for acceptance
Checked	11.01.2022	J. Immler	
Released	17.02.2022	A. Starz	
HIRSCHMANN AUTOMOTIVE		Drawing - No. 810-001-...00	
Origin		Replacement	Sheet 1 of 2
Controlled status available in the system!			

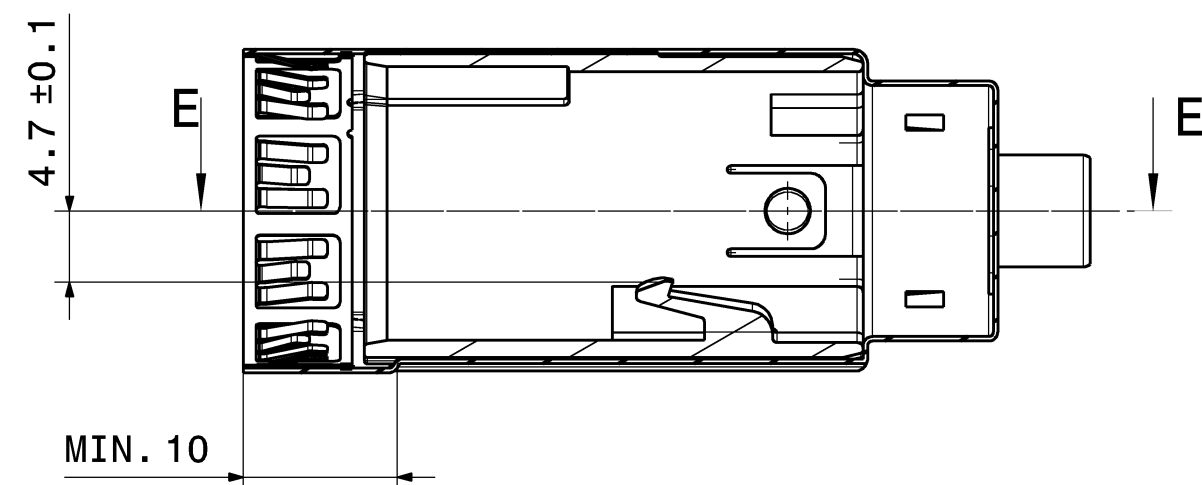
This material contains information protected by copyright. Reproduction or translation into another language without the prior written consent of Hirschmann is prohibited.

Pic from: TMAITER on 17.02.2022 Doc.Vers. 00 Valid from: 20220117 Valid until: ... Status: Freigegeben

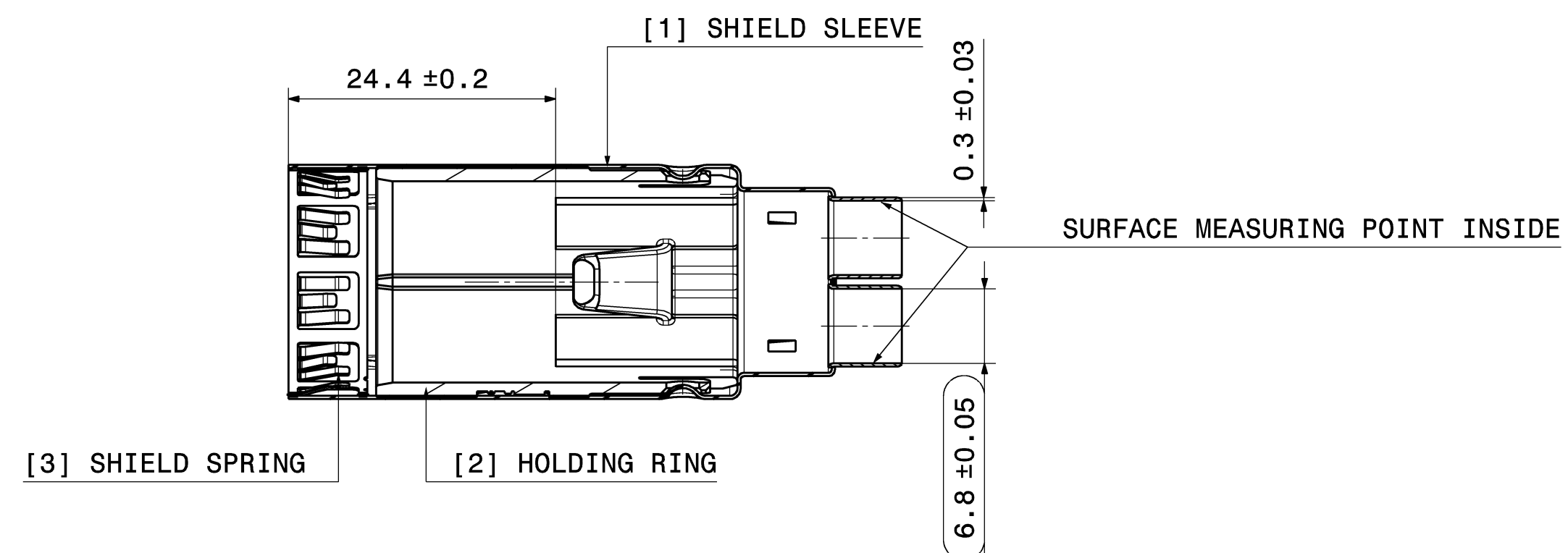
INDEX 502



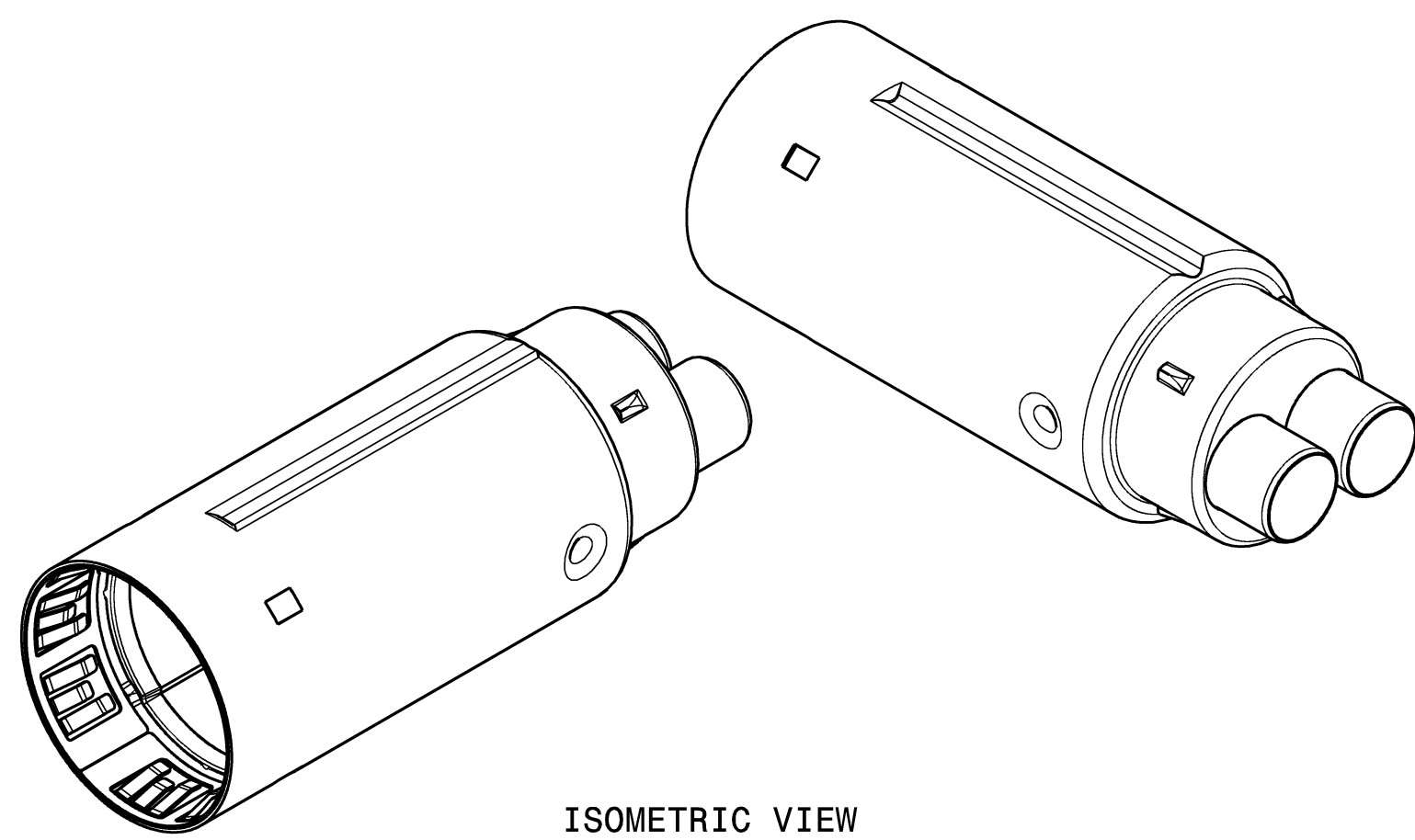
SECTION CUT F-F



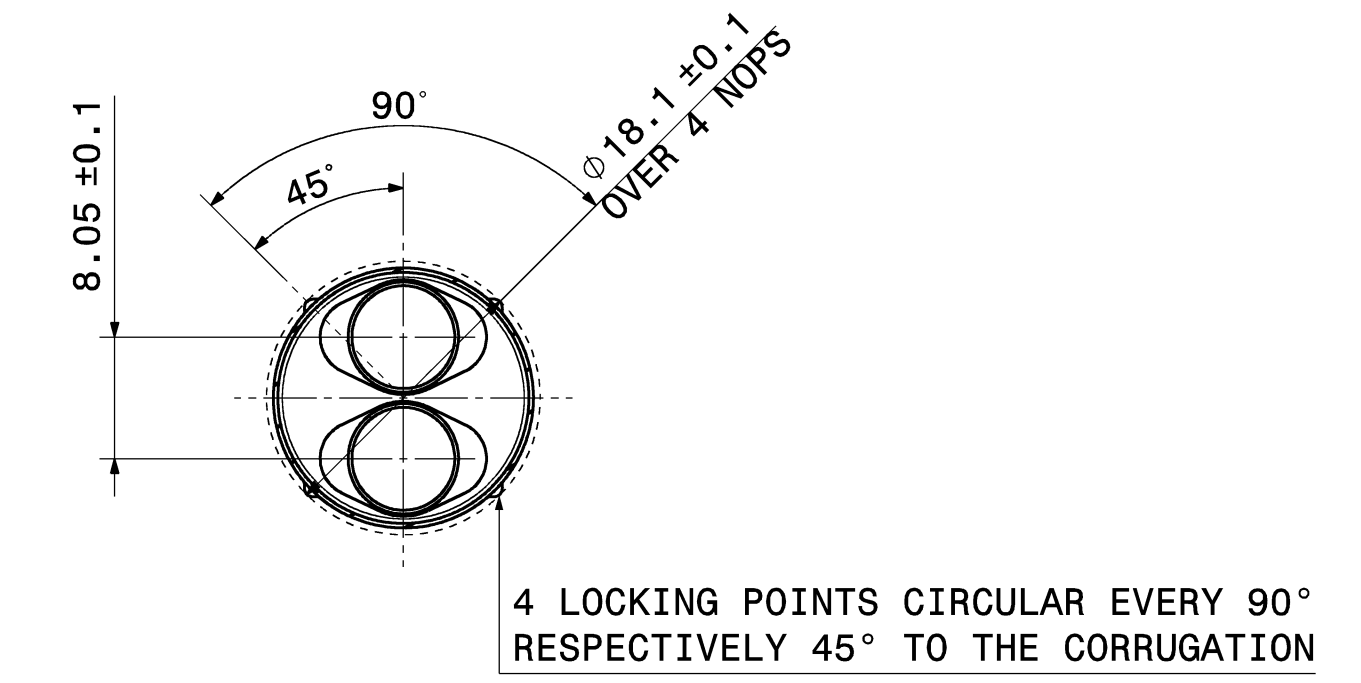
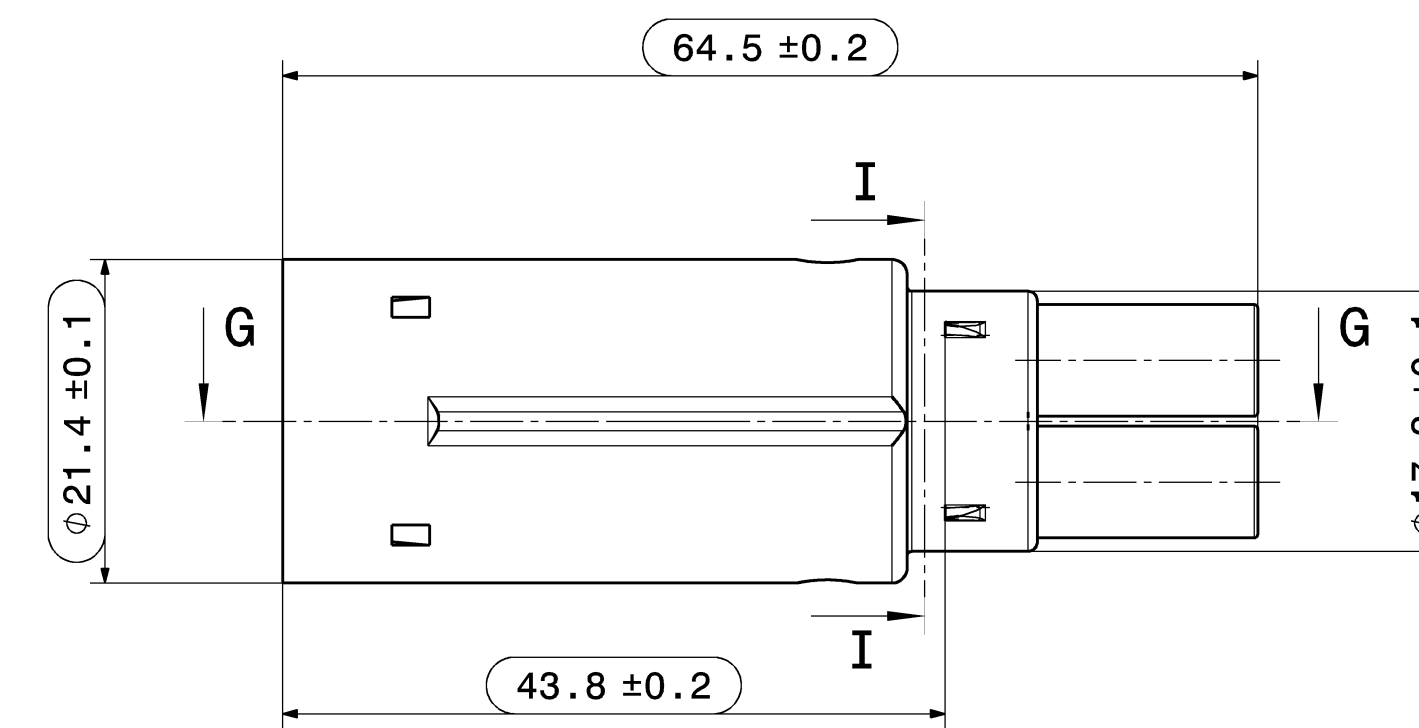
SECTION CUT D-D



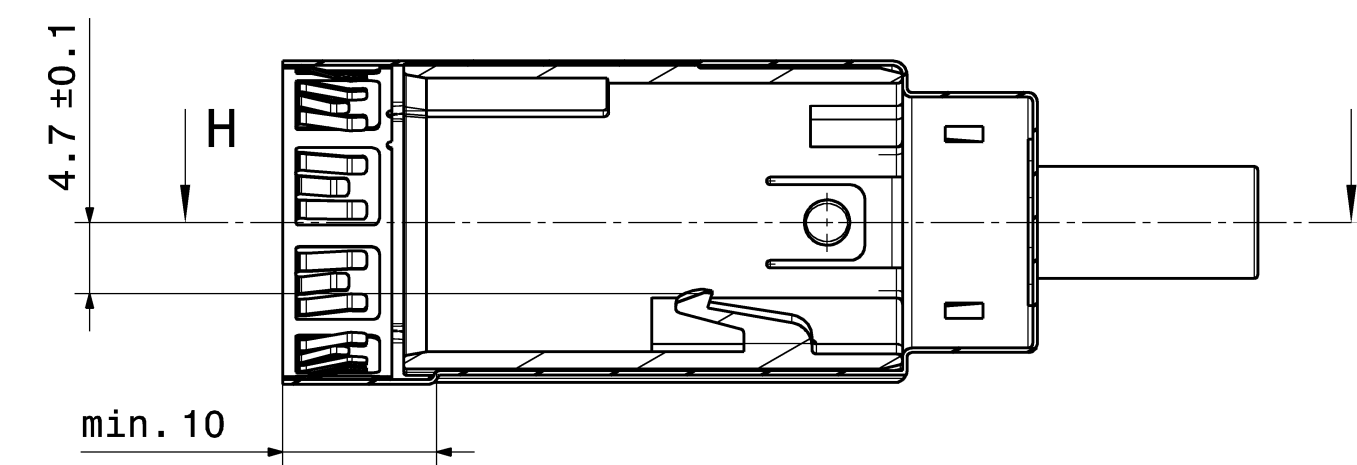
SECTION CUT E-E



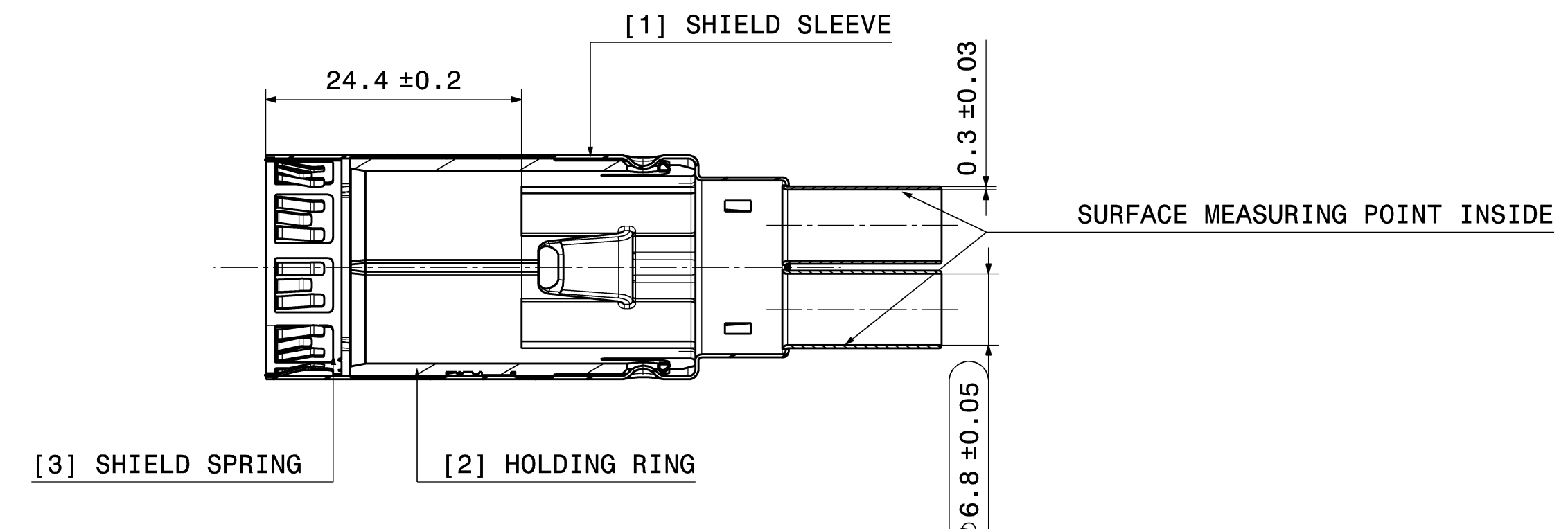
INDEX 503



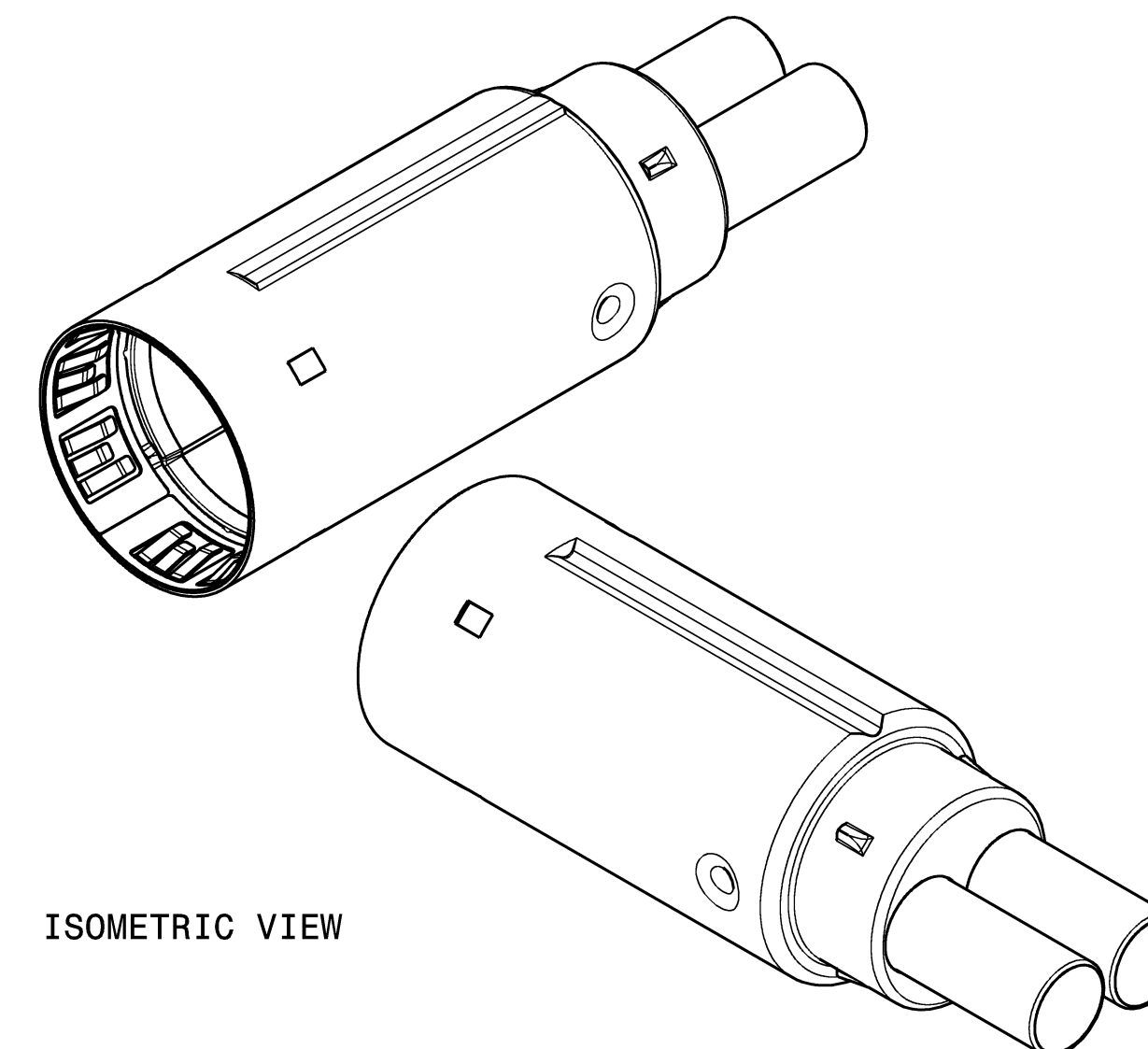
SECTION CUT I-I



SECTION CUT G-G



SECTION CUT H-H



00	Ersterstellung / Initial edition	11.01.2022	PGR
Version	Mod. nr.	Description of alteration	Date
Test instructions			
Crude state	Material	Final state	Gross weight g/pc
			Final weight g/pc
Material-Nr. / No.	Tolerances	EN ISO 8015	Surface cm ² /pc
	Edges	DIN ISO 13715	Scale 2:1
	Geometric tolerances	DIN ISO 1101	CDI
Date	Name	Dimensions specially checked for acceptance	
Drawn	11.01.2022	J. Immler	Title
Checked	17.02.2022	A. Starz	HPS IN-LINE CONNECTOR SHIELDING SLEEVE
Released	17.02.2022	A. Starz	Type
HIRSCHMANN AUTOMOTIVE		SS	DIN A1
Oberer Pappelweg 6-8		Drawing - No.	810-001-...00
A-680 Namzell-Breda		Origin	Replacement
		DIN	100000416253