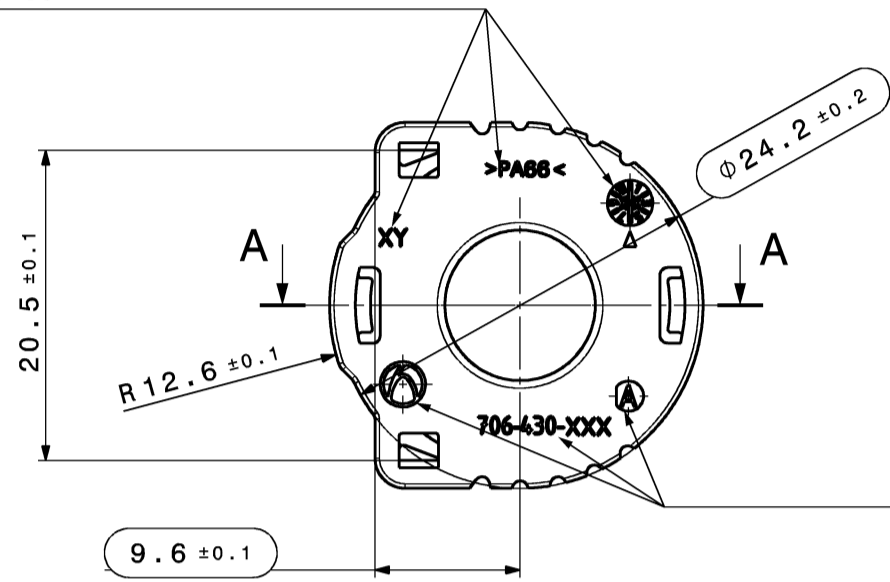


-Datum D3
vertieft
DATE D3
RECESSED

-Materialkennzeichnung
vertieft
MATERIAL DESCRIPTION
RECESSED

-Formteilnummer
vertieft
MOLD CAVITY NO.
RECESSED

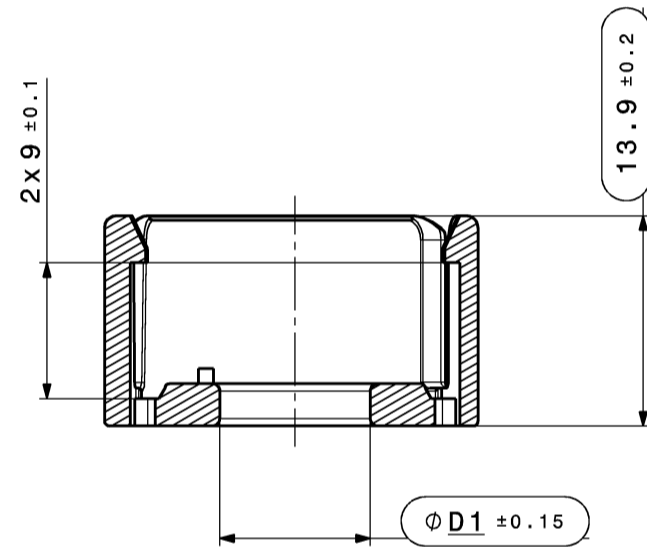
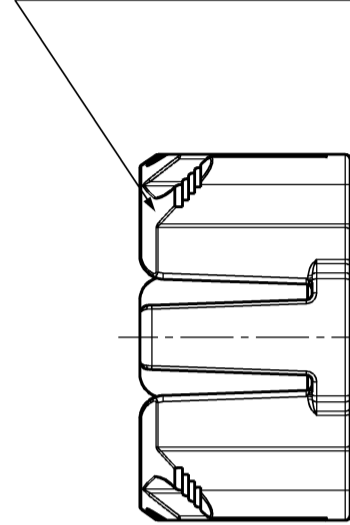


-HA Revision
HA REVISION

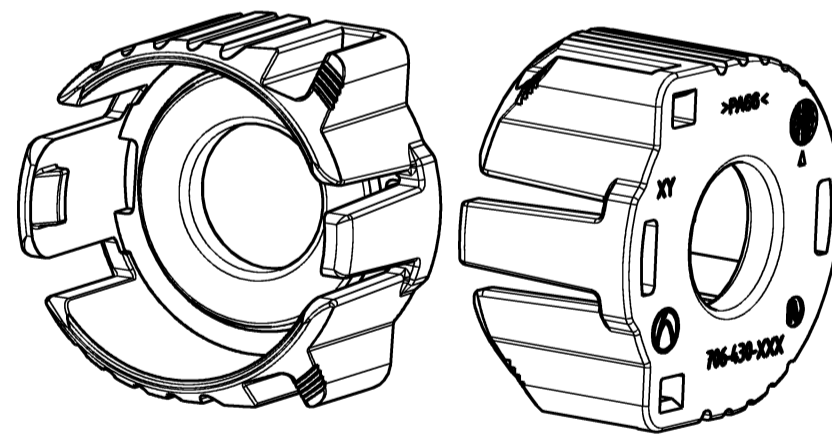
-Firmenzeichen
vertieft
COMPANY SIGN
RECESSED

-Hirschmann Nr.
vertieft
HIRSCHMANN NO.
RECESSED

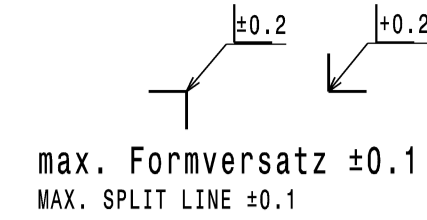
Fase 35° umlaufend
CHAMFER 35° CIRCULAR



Schnittansicht A-A
SECTION CUT A-A



Isometrische Ansicht Ind.501-503
ISOMETRIC VIEW



Toleranzen fuer nicht tolerierte Masse:
1. Winkelmasse: (in °)
Fuer alle Winkelmasse gilt ±2°
2. Radien: (in mm)
3. Laengenmasse:
DIN 2768-mH
4. Allgemeintoleranz fuer Symmetrie: ±0.2

| bis 1 | 1-3 | 3-10 | 10-20 | 20-30 | 30-50 |
|-------|------|------|-------|-------|-------|
| ±0.2 | ±0.3 | ±0.4 | ±0.5 | ±1 | ±2 |

TOLERANCES FOR UNTOLERATED DIMENSIONS:
1. ANGLE-DIMENSIONS (IN °)
TOLERANCE FOR ALL ANGLE-DIMENSIONS: ±2°
2. RADII: (IN mm)
3. DISTANCE-DIMENSIONS:
DIN 2768-mH
4. GENERAL TOLERANCE FOR SYMMETRY: ±0.2

| TO 1 | 1-3 | 3-10 | 10-20 | 20-30 | 30-50 |
|------|------|------|-------|-------|-------|
| ±0.2 | ±0.3 | ±0.4 | ±0.5 | ±1 | ±2 |

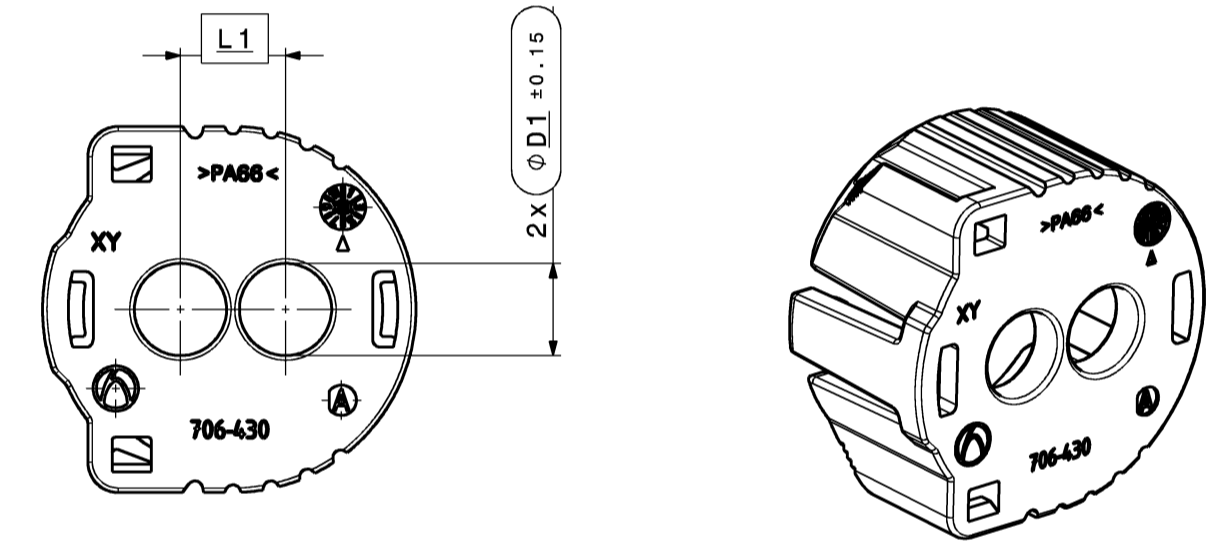
Bemerkungen:

COMMENTS:

1. massgebend ist der deutsche Text / GERMAN TEXT IS VALID
2. unbemaste Radien R0.3 +/- 0.1mm / UNDIMENSIONED RADII R0.3 +/-0.1mm
3. Funktionsbestimmende Maße, die mit gekennzeichnet sind, werden im EMPB dokumentiert. Nicht gekennzeichnete Maße werde ebenfalls ausgemessen, aber nicht im EMPB dokumentiert. Abweichungen sind zu korrigieren. DIMENSIONS WITH ARE DOCUMENTED IN THE INITIAL SAMPLE INSPECTION PREORT (ISIR). UNMARKED DIMENSIONS ARE ALSO MEASURED BUT NOT DOCUMENTED IN THE ISIR. VARIATIONS MUST BE CORRECTED.
4. Teil entspricht Altautorichtlinie nach DBL 8585
PART CORRESPONDS TO SCRAP CAR GUIDELINE DBL 8585
5. Teilekennzeichnung angelehnt an MBN 10435
PART IDENTIFICATION SIMILAR MBN 10435
6. Max. 30% Regranulat zulaessig / MAX. 30% RECLAIM ACCEPTABLE

02

Index 504 / 505



Isometrische Ansicht Ind.504+505
ISOMETRIC VIEW

Restliche Maße und Eigenschaften siehe Index 501-503
REMAINING DIMENSIONS AND PROPERTIES SEE INDEX 501-503

| Version | Numb. of | Description of alteration | Date | drwn |
|---------|----------|---|------------|------|
| 02 | 01 | ADDED INDEX 504 / 505 | 12.02.2020 | RHO |
| 00 | 00 | REMOVED INDICES 004-006; ADDED HIRSCHMANN INDICES; Ersterstellung / Initial edition | 28.03.2018 | BAS |
| | | | 27.09.2017 | JZI |

| Crude state | Material | Final state | Gross weight | g/pc |
|-------------|----------|-------------|--------------|------|
| | | | Final weight | g/pc |

| Material-No. | Tolerances | Surface | Scrap |
|--------------|----------------------|---------------------|-------|
| | DIN 2768-mH | cm ² /pc | % |
| | Edges | DIN ISO 13715 | |
| | Geometric tolerances | DIN ISO 1101 | |

| Date | Name | Dimensions specially checked for acceptance |
|------------|----------|---|
| 12.02.2020 | R.Hoor | |
| 12.02.2020 | L.Breuss | |
| 12.02.2020 | L.Breuss | |

| Date | Name | Title | DIN A2 |
|------------|----------|---------------------------|--------|
| 12.02.2020 | R.Hoor | Schutzkappe | |
| 12.02.2020 | L.Breuss | HIRSCHMANN PowerStar 40-2 | CDI |

| Origin | Replacement | DNR |
|--|-------------|--------------|
| HIRSCHMANN AUTOMOTIVE Oberer Paspelsweg 6-8 A-6830 Rankweil-Brederis | | 100000231173 |

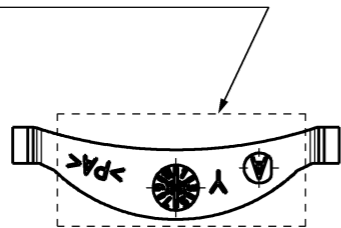
| Lft. Bestell Nr. ORDER NO. | D1 | L1 | Material MATERIAL | Farbe COLOUR | Gewicht WEIGHT | HA REV. | Leitungsquerschnitt WIRE CROSS SECTION | Hirschmann-Nummer HIRSCHMANN-NUMBER |
|-------------------------------|-------|------|----------------------|----------------------------|-------------------|---------|---|--|
| 706-430-505 | 6,65 | 7,5 | PA66 GF25 | rot / RED ~ RAL 3024 | 2,6g | A | 6mm ² SCC | 706-430-005 |
| 706-430-504 | 6,10 | 6,95 | | grau / GREY ~ RAL 7040 | 2,7g | A | 4mm ² SCC | 706-430-004 |
| 706-430-503 | 12,85 | - | | rot / RED ~ RAL 3024 | 2,1g | B | 6mm ² | 706-430-003 |
| 706-430-502 | 11,35 | - | | grau / GREY ~ RAL 7040 | 2,2g | B | 4mm ² | 706-430-002 |
| 706-430-501 | 9,95 | - | | beige / FAWN ~ RAL 1001 | 2,3g | B | 2,5mm ² | 706-430-001 |
| | | | | | | | | |

02

This materials contain information protected by copyright. No part of this materials may be photocopied, otherwise reproduced or translated into another language without the prior written consent of Hirschmann. All rights reserved.

Plot from: TNATTER on 06.08.2022 Doc.Vers. 02 Valid from: 20200212 Valid until: ... Status: Kundenfreigabe

- Materialkennzeichnung vertieft
MATERIAL IDENTIFICATION RECESSED
- Formteilnummer vertieft
MOLD CAVITY NUMBER RECESSED
- Datumsuhr vertieft-erhaben
DATE STAMP RECESSED-RAISED
- HA Revision vertieft-erhaben
HA REVISION RECESSED-RAISED



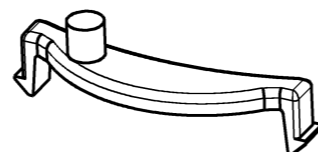
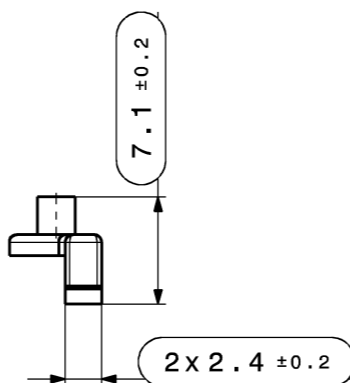
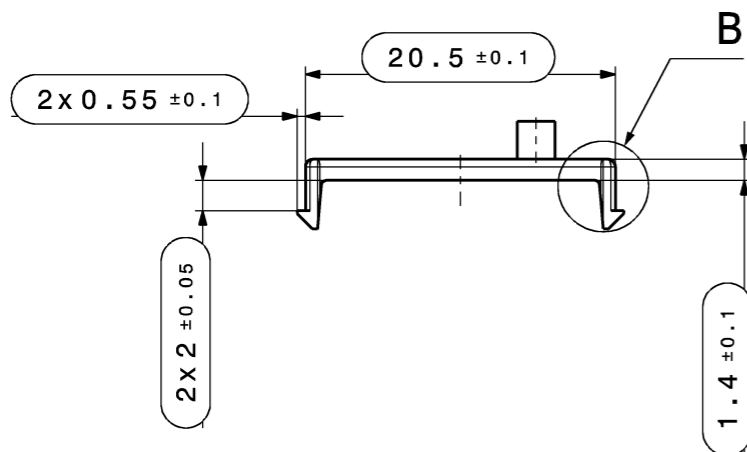
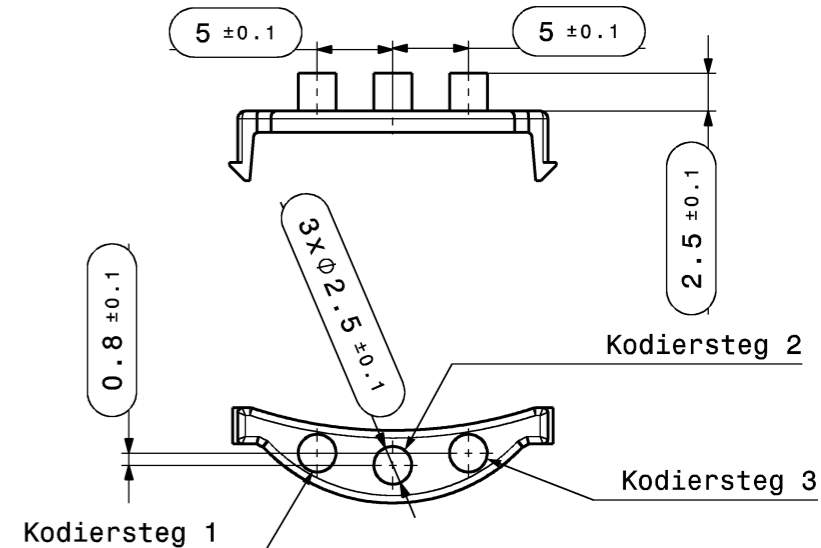
Toleranzen fuer nicht tolerierte Masse:

1. Winkelmasse: (in °)
Fuer alle Winkelmasse gilt ±2°
 2. Radien : (in mm)
- | | | | | | |
|-------|------|------|-------|-------|-------|
| bis 1 | 1-3 | 3-10 | 10-20 | 20-30 | 30-50 |
| ±0.2 | ±0.3 | ±0.4 | ±0.5 | ±1 | ±2 |
3. Laengenmasse :
DIN 2768-mH
 4. Allgemeintoleranz fuer Symmetrie: $\equiv 0.2$

TOLERANCES FOR UNTOLERATED DIMENSIONS:

1. ANGLE-DIMENSIONS (IN °)
TOLERANCE FOR ALL ANGLE-DIMENSIONS: ±2°
 2. RADII : (IN mm)
- | | | | | | |
|------|------|------|-------|-------|-------|
| TO 1 | 1-3 | 3-10 | 10-20 | 20-30 | 30-50 |
| ±0.2 | ±0.3 | ±0.4 | ±0.5 | ±1 | ±2 |
3. DISTANCE-DIMENSIONS:
DIN 2768-mH
 4. GENERAL TOLERANCE FOR SYMMETRY: $\equiv 0.2$

| | Steg 1 | Steg 2 | Steg 3 |
|-------------------------|--------|--------|--------|
| Kodierung A CODING A | X | | |
| Kodierung B CODING B | | X | |
| Kodierung C CODING C | | | X |
| Kodierung D CODING D | X | X | |
| Kodierung E CODING E | | X | X |
| Kodierung F CODING F | X | | X |
| Kodierung Z CODING Z | X | X | X |



Isometrische Ansicht
ISOMETRIC VIEW

max. Formversatz ±0.1
MAX. SPLIT LINE ±0.1

Bemerkungen:

COMMENTS:

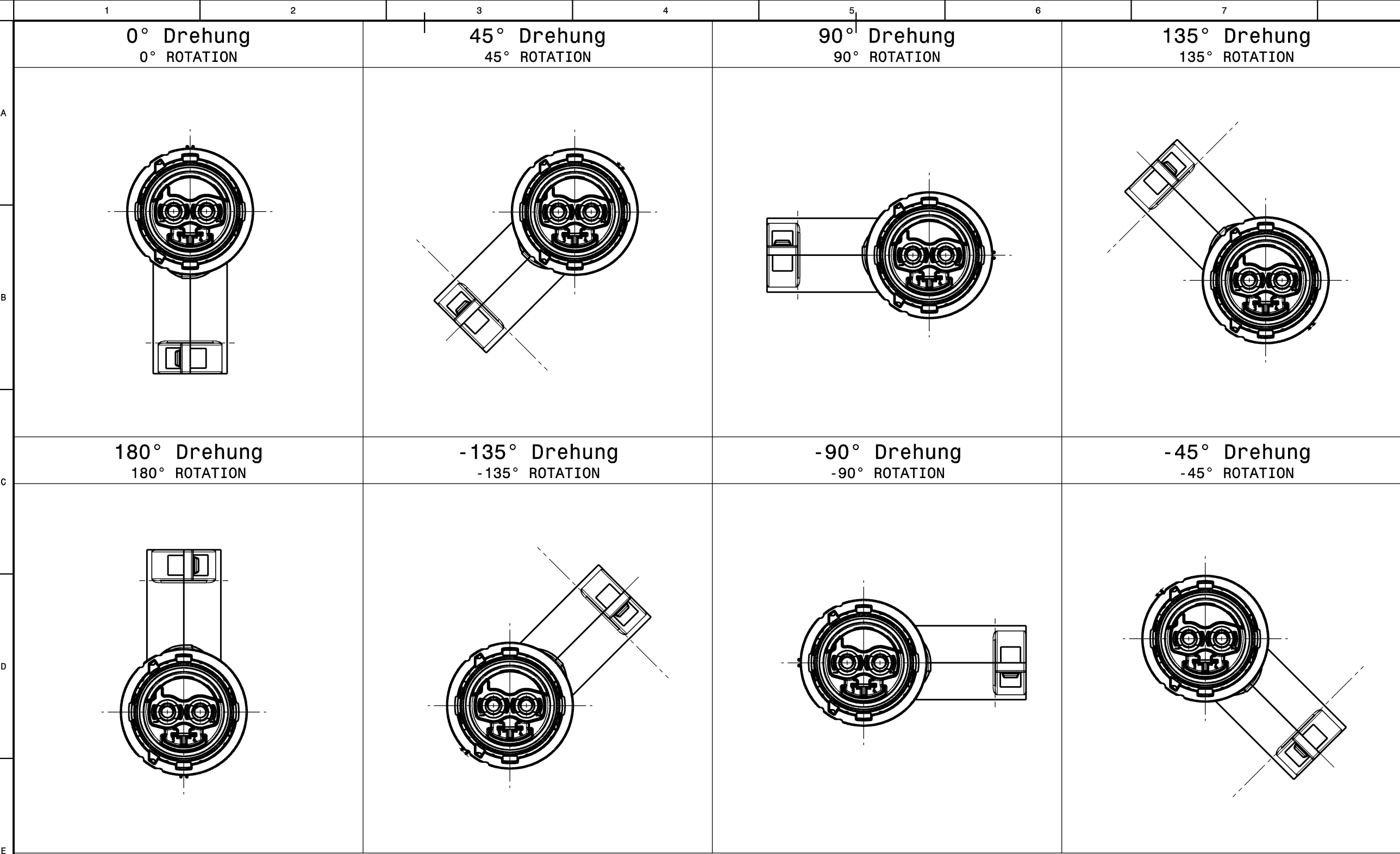
1. massgebend ist der deutsche Text / GERMAN TEXT IS VALID
2. Kodierung A gezeichnet / CODING A DRAWN
3. unbemaste Radien R0.3 +/- 0.1mm / UNDIMENSIONED RADII R0.3 +/- 0.1mm
4. Funktionsbestimmende Maße, die mit $\text{\textcircled{\hspace{0.5cm}}}$ gekennzeichnet sind, werden im EMPB dokumentiert. Nicht gekennzeichnete Maße werde ebenfalls ausgemessen, aber nicht im EMPB dokumentiert. Abweichungen sind zu korrigieren.
DIMENSIONS WITH $\text{\textcircled{\hspace{0.5cm}}}$ ARE DOCUMENTED IN THE INITIAL SAMPLE INSPECTION PREORT (ISIR). UNMARKED DIMENSIONS ARE ALSO MEASURED BUT NOT DOCUMENTED IN THE ISIR. VARIATIONS MUST BE CORRECTED.
5. Teil entspricht Altautorichtlinie nach DBL 8585
PART CORRESPONDS TO SCRAP CAR GUIDELINE DBL 8585
6. Teilekennzeichnung angelehnt an MBN 10435 / PART IDENTIFICATION SIMILAR MBN 10435
7. Max. 30% Regranulat zulaessig / MAX. 30% RECLAIM ACCEPTABLE

| 02 | geometry clip updated; added detail B; | 02.02.2021 | FWI | |
|--------------------------|--|---------------------------|---------------------------|-----------------------------|
| 01 | Added Index007; | 13.11.2019 | STS | |
| 00 | Erstellung / Initial edition | 27.09.2017 | JZI | |
| Version | Numb. of | Description of alteration | Date | drwn |
| Test instructions | | | | |
| Crude state | | Material | Final state | Gross weight g/pc |
| | | | | Final weight g/pc |
| Material-No. | | Tolerances | DIN 2768-mH | Surface cm ² /pc |
| | | Edges | DIN ISO 13715 | Scrap % |
| | | Geometric tolerances | DIN ISO 1101 | dimensions in millimeters |
| Scale | 2:1 | CAD System/Version | | |
| Date | | Name | CATIA V5 | |
| Drawn | 02.02.2021 | F.Winsauer | Title | |
| Checked | 15.02.2021 | L.Breuss | Type | |
| Released | 15.02.2021 | L.Breuss | HIRSCHMANN PowerStar 40-2 | |
| HIRSCHMANN AUTOMOTIVE | | Drawing - No. | | 706-505-...00 |
| Origin | | Replacement | | Sheet 1 of 1 |
| DNR | | 100000231169 | | |

| Lft. Bestell Nr. ORDER NO. | Kodierung CODING | Material MATERIAL | Farbe COLOR | Gewicht WEIGHT | HA REV. |
|-------------------------------|---------------------|----------------------|--|-------------------|---------|
| 706-505-505 | Z | PA66 GF25 | wasserblau, ~RAL 5021 WATERBLUE, ~RAL 5021 | 0,2 g | B |
| 706-505-504 | D | | violett, ~RAL 4004 PURPLE, ~RAL 4004 | 0,2 g | B |
| 706-505-503 | C | | blau, ~RAL 5012 BLUE, ~RAL 5012 | 0,2 g | B |
| 706-505-502 | B | | natur/weiss, ~RAL 9001 NATURAL/WHITE, ~RAL 9001 | 0,2 g | B |
| 706-505-501 | A | | schwarz, ~RAL 9011 BLACK, ~RAL 9011 | 0,2 g | B |

This materials contain information protected by copyright. No part of this materials may be photocopied, otherwise reproduced or translated into another language without the prior written consent of Hirschmann. All rights reserved.

Plot from: TNATTER on 06.08.2022 Doc.Vers. 02 Valid from: 20210215 Valid until: ... Status: Kundenfreigabe



± 0.2 ± 0.2
 max. Formversatz ± 0.1
 MAX. SPLIT LINE ± 0.1

Toleranzen fuer nicht tolerierte Masse:

1. Winkelmasse: (in °)
Fuer alle Winkelmasse gilt $\pm 2^\circ$
2. Radien : (in mm)

| | | | | | |
|-----------|-----------|-----------|-----------|---------|---------|
| bis 1 | 1-3 | 3-10 | 10-20 | 20-30 | 30-50 |
| ± 0.2 | ± 0.3 | ± 0.4 | ± 0.5 | ± 1 | ± 2 |

3. Laengenmasse :
DIN 2768-mH
4. Allgemeintoleranz fuer Symmetrie: ± 0.2

TOLERANCES FOR UNTOLERATED DIMENSIONS:

1. ANGLE-DIMENSIONS (IN °)
TOLERANCE FOR ALL ANGLE-DIMENSIONS: $\pm 2^\circ$
2. RADII : (IN mm)

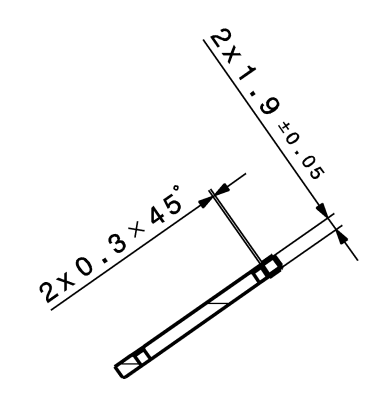
| | | | | | |
|-----------|-----------|-----------|-----------|---------|---------|
| TO 1 | 1-3 | 3-10 | 10-20 | 20-30 | 30-50 |
| ± 0.2 | ± 0.3 | ± 0.4 | ± 0.5 | ± 1 | ± 2 |

3. DISTANCE-DIMENSIONS:
DIN 2768-mH
4. GENERAL TOLERANCE FOR SYMMETRY: ± 0.2

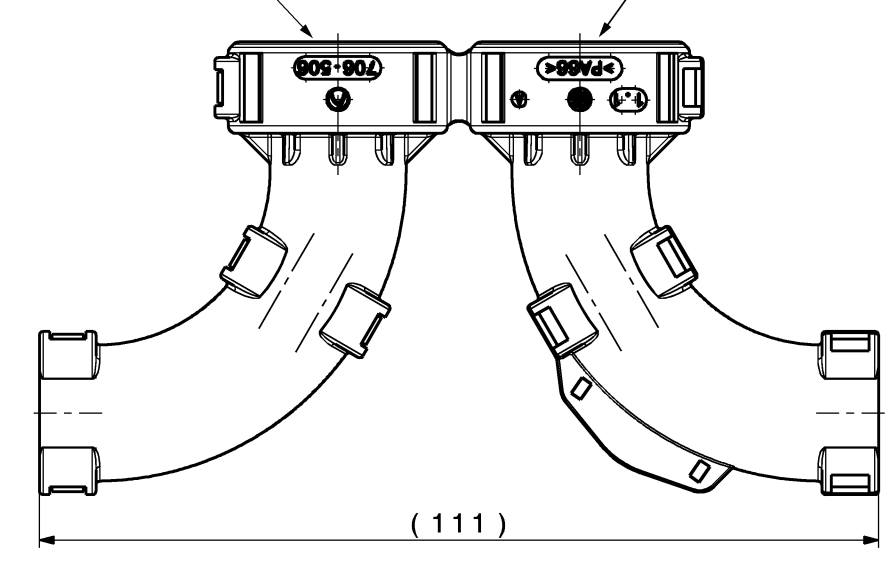
Bemerkungen:

- COMMENTS:
1. massgebend ist der deutsche Text / GERMAN TEXT IS VALID
 2. unbemaste Radien $R0.3 \pm 0.1\text{mm}$ / UNDIMENSIONED RADII $R0.3 \pm 0.1\text{mm}$
 3. Funktionsbestimmende Maße, die mit \square gekennzeichnet sind, werden im EMPB dokumentiert. Nicht gekennzeichnete Maße werde ebenfalls ausgemessen, aber nicht im EMPB dokumentiert. Abweichungen sind zu korrigieren.
DIMENSIONS WITH \square ARE DOCUMENTED IN THE INITIAL SAMPLE INSPECTION PREORT (ISIR).
UNMARKED DIMENSIONS ARE ALSO MEASURED BUT NOT DOCUMENTED IN THE ISIR. VARIATIONS MUST BE CORRECTED.
 4. Teil entspricht Altautorichtlinie nach DBL 8585
PART CORRESPONDS TO SCRAP CAR GUIDELINE DBL 8585
 5. Teilekennzeichnung angelehnt an MBN 10435
PART IDENTIFICATION SIMILAR MBN 10435

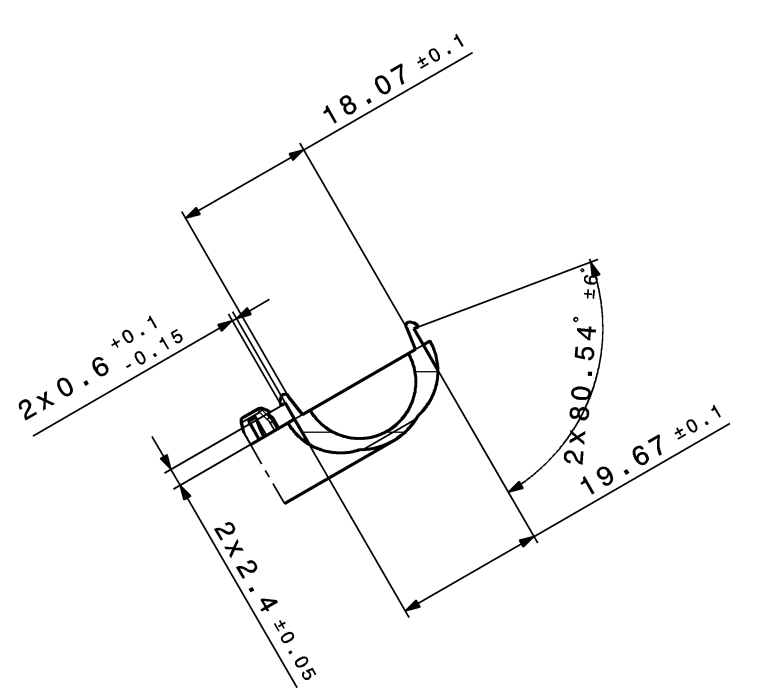
- Materialkennzeichnung vertieft, erhaben
MATERIAL DESCRIPTION RECESSED, RAISED
- Datumstempel vertieft, erhaben
DATE STAMP RECESSED, RAISED
- Firmenzeichen vertieft
COMPANY SIGN RECESSED
- Hirschmann Nr. vertieft, erhaben
HIRSCHMANN NO. RECESSED, RAISED
- Formteilnummer vertieft, erhaben
CAVITY NUMBER RECESSED, RAISED
- HA-Revision vertieft, erhaben
HA-REVISION RECESSED, RAISED



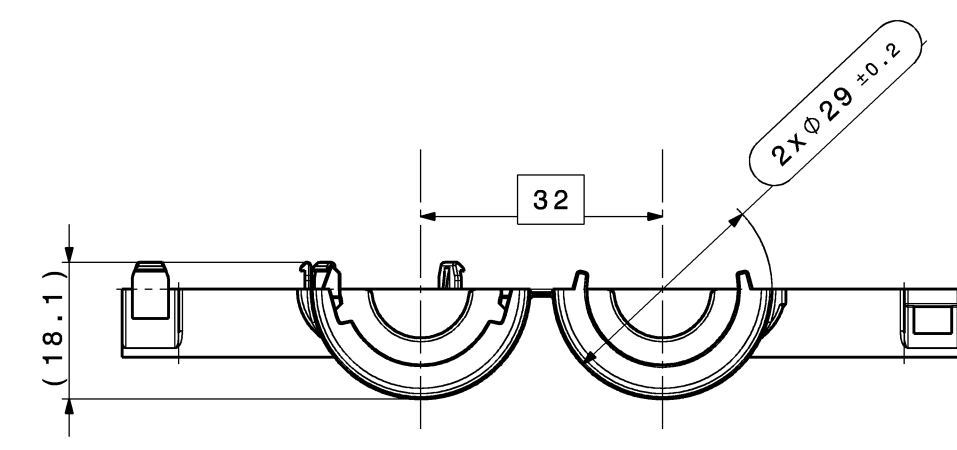
Schnittansicht J-J
Maßstab: 1:1



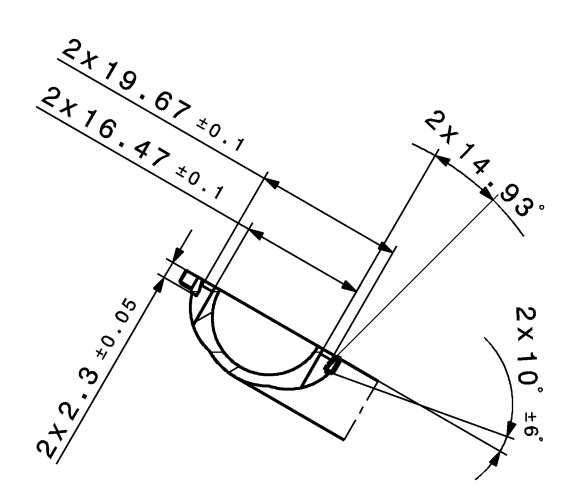
Rückansicht
Maßstab: 1:1



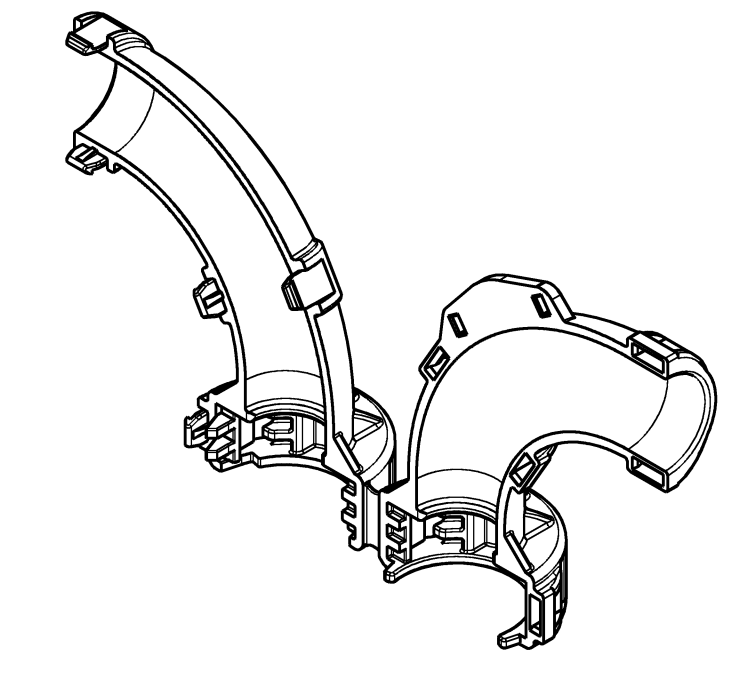
Schnittansicht F-F
Maßstab: 1:1



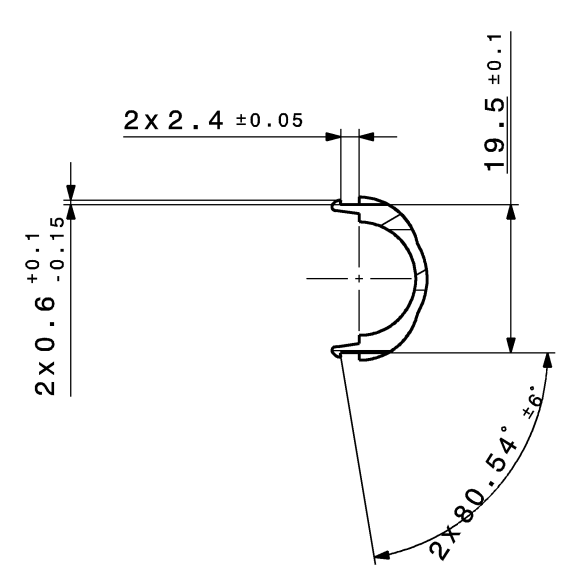
Untersicht
Maßstab: 1:1



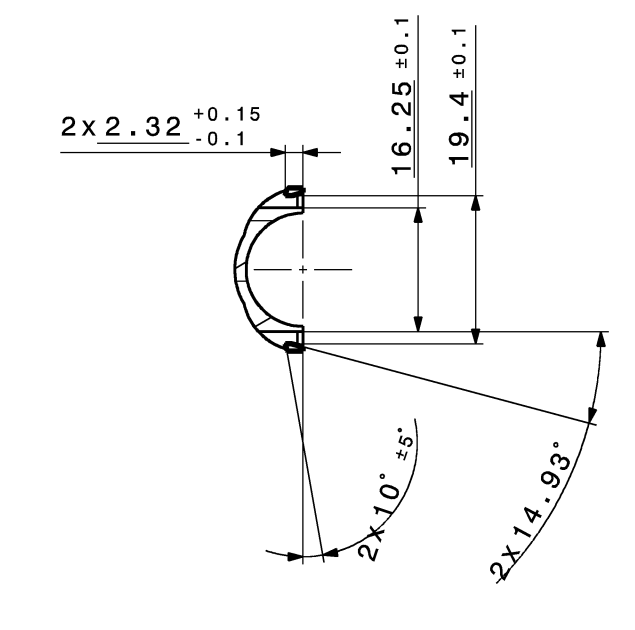
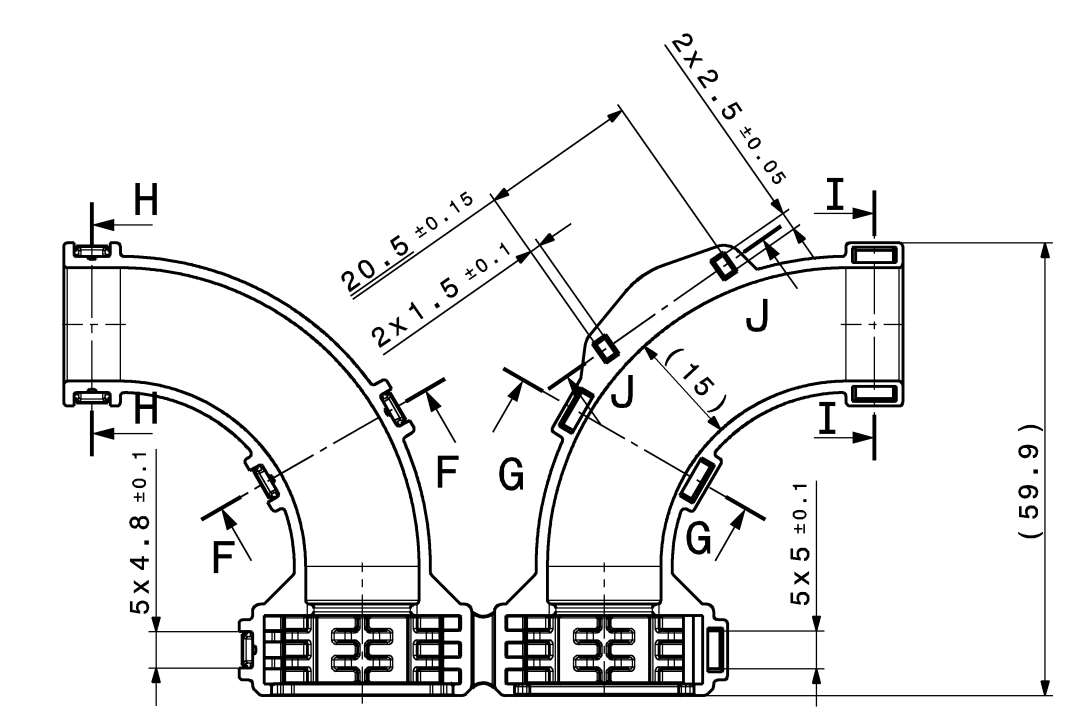
Schnittansicht G-G
Maßstab: 1:1



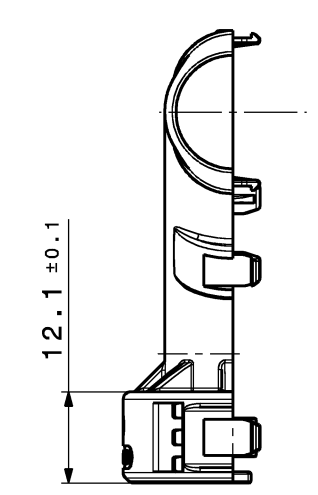
Isometrische Ansicht
Maßstab: 1:1
ISOMETRIC VIEW
SCALE: 1:1



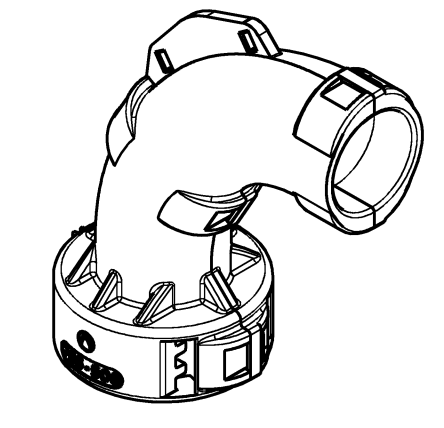
Schnittansicht H-H
Maßstab: 1:1



Schnittansicht I-I
Maßstab: 1:1



Seitenansicht links
Maßstab: 1:1



Isometrische Ansicht geschlossen
Maßstab: 1:1
ISOMETRIC VIEW CLOSED
SCALE: 1:1

| | | | | | | |
|-------------------------------|----------------------|-------------------------|-------------------|---------|--|--|
| 706-506-503 | PA66 GF25 | rot / RED ~ RAL 3024 | 9,5g | C | 2,5mm ² /4mm ² /6mm ² | 9,3 - 12,8 |
| Lft. Bestell Nr. ORDER NO. | Material MATERIAL | Farbe COLOUR | Gewicht WEIGHT | HA REV. | Leitungsquerschnitt WIRE CROSS SECTION | Leitungs-Außen Ø CONDUCTOR OUTER DIAMETER |

| | | | |
|----|---|------------|-----|
| 03 | adjusting of dimentions; changing tolerances; | 02.08.2021 | MPO |
| 02 | updated design for locking latches; | 15.03.2021 | FWI |
| 01 | Updated locking geometry; Updated bearing for coding-clip; raised revision to B | 12.03.2020 | RHO |
| 00 | Ersterstellung / Initial edition | 13.02.2019 | JZT |

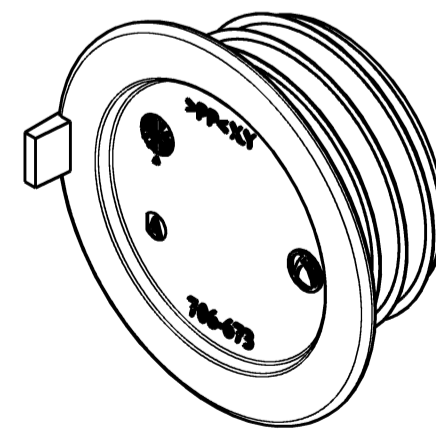
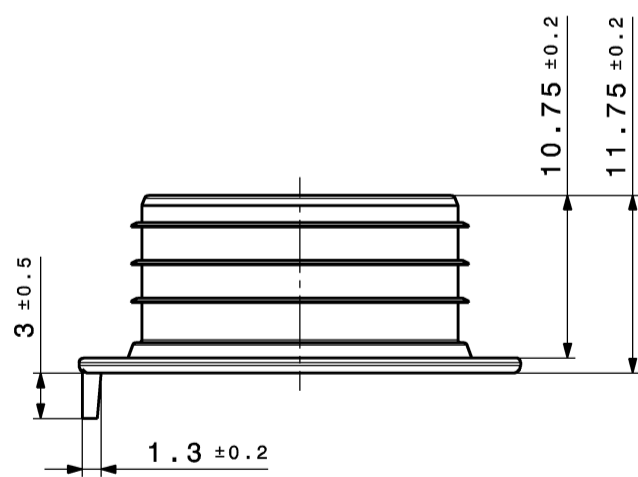
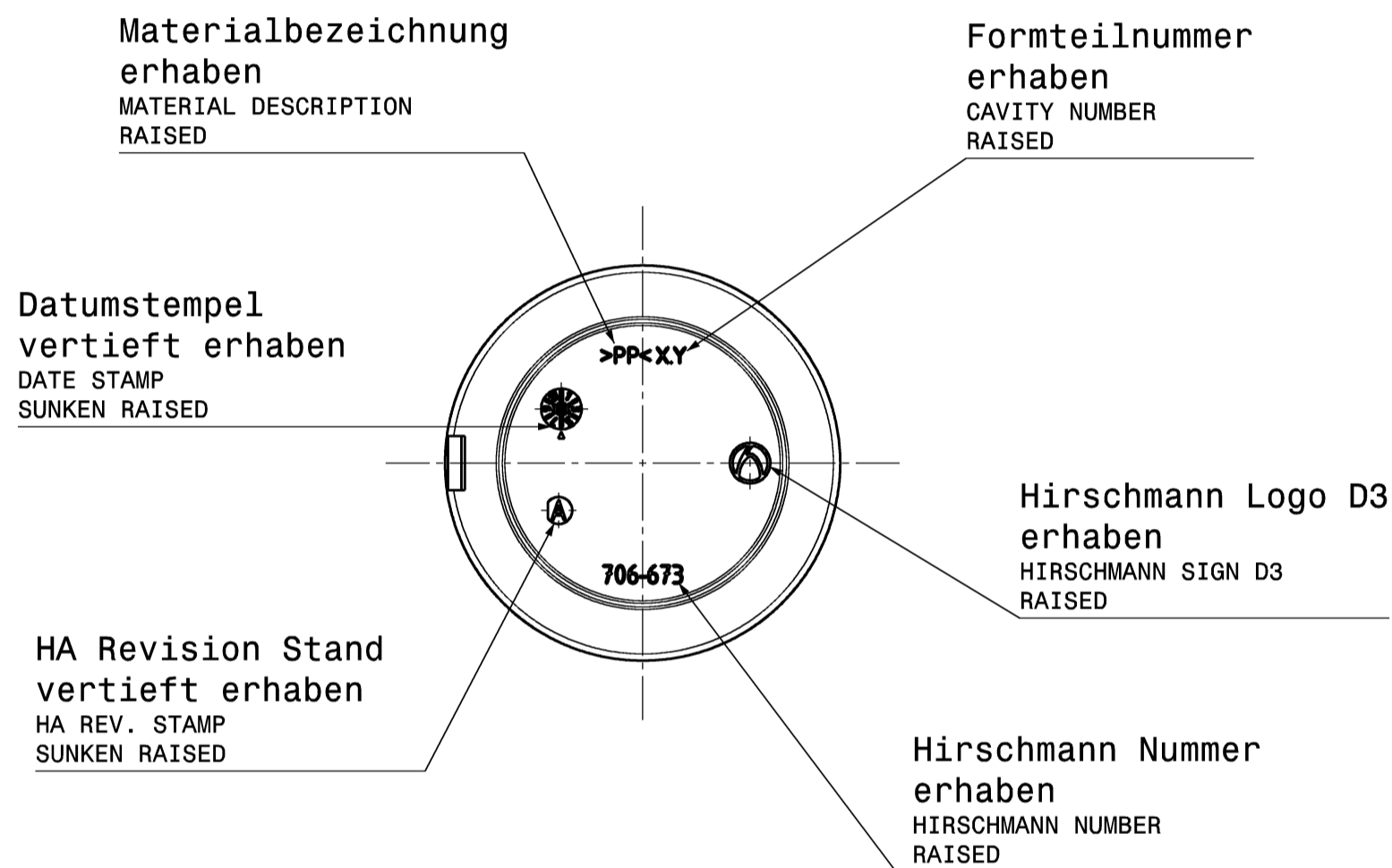
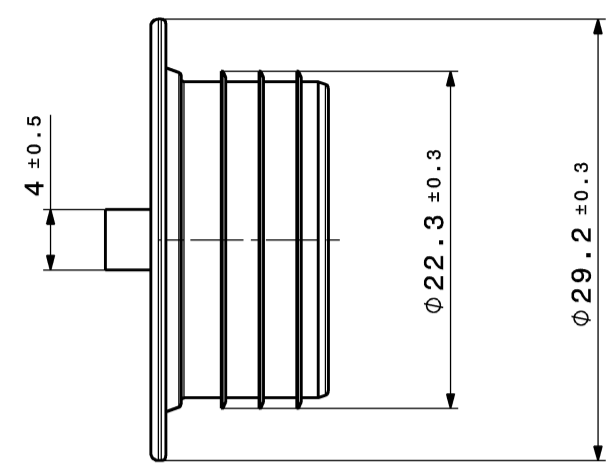
| | | | | |
|--------------------|----------------------|---------------------------|---|---------------------|
| Version | Sub. of | Description of alteration | Date | Drawn |
| Test instructions | | | | |
| Crude state | Material | Final state | Gross weight | g/pc |
| | | | Final weight | g/pc |
| Material-Nr. / No. | Tolerances | EN ISO 8015 | Surface | cm ² /pc |
| | Edges | DIN ISO 13715 | Scale | 1:1 |
| | Geometric tolerances | DIN ISO 1101 | Scale | 1:1 |
| Draw | Date | Name | Dimensions specially checked for acceptance | |
| Checked | 24.02.2022 | T.Kleiner | Title | |
| Released | 24.02.2022 | T.Kleiner | HPS40-2 Winkelkappe | |
| | | | Type | |
| | | | Hirschmann Power Star | |
| | | | Drawing - No. | |
| | | | 706-506-...00 | |
| | | | Sheet | |
| | | | 1 of 1 | |
| | | | Origin | |
| | | | Replacement | |
| | | | DWG 100000271562 | |

Controlled status available in the system!

This material contains information protected by copyright. Any reproduction or translation into another language without the prior written consent of Hirschmann is prohibited.

Plot from: T:\MATTER on 06.06.2022 Doc.Vers. 03 Valid from: 20220412 Valid until: 20220412 Status: Kundenfreigebe

This materials contain information protected by copyright. No part of this materials may be photocopied, otherwise reproduced or translated into another language without the prior written consent of Hirschmann. All rights reserved.
 Diese Unterlage ist unser Eigentum. Jede Vervielfältigung, Verwertung, Mitteilung bzw. Weitergabe an Dritte ohne unsere vorherige Zustimmung ist untersagt. Zuwiderhandlungen verpflichten zu Schadenersatz. Alle Rechte fuer den Fall der Patenterteilung, Gebrauchs- bzw. Geschmacks-mustereintragung vorbehalten.



Isometrische Ansicht
 Maßstab: 2:1
 ISOMETRIC VIEW
 SCALE: 2:1

- Toleranzen fuer nicht tolerierte Masse:
- Winkelmasse: (in °)
Fuer alle Winkelmasse gilt ±2°
 - Radien : (in mm)
 - Laengenmasse :
DIN 2768-mH
 - Allgemeintoleranz fuer Symmetrie: $\begin{matrix} \equiv \\ \equiv \end{matrix} 0.2$

| | | | | | |
|-------|------|------|-------|-------|-------|
| bis 1 | 1-3 | 3-10 | 10-20 | 20-30 | 30-50 |
| ±0.2 | ±0.3 | ±0.4 | ±0.5 | ±1 | ±2 |

- TOLERANCES FOR UNTOLERATED DIMENSIONS:
- ANGLE-DIMENSIONS (IN °)
TOLERANCE FOR ALL ANGLE-DIMENSIONS: ±2°
 - RADII : (IN mm)
 - DISTANCE-DIMENSIONS:
DIN 2768-mH
 - GENERAL TOLERANCE FOR SYMMETRY: $\begin{matrix} \equiv \\ \equiv \end{matrix} 0.2$

| | | | | | |
|------|------|------|-------|-------|-------|
| TO 1 | 1-3 | 3-10 | 10-20 | 20-30 | 30-50 |
| ±0.2 | ±0.3 | ±0.4 | ±0.5 | ±1 | ±2 |

Bemerkungen / COMMENTS:

- massgebend ist der deutsche Text / GERMAN TEXT IS VALID
- unbemasste Radien R0,2mm±0,1 / UNDIMENSIONED RADII R0,2mm±0,1
- Fehlende Masse sind dem CAD-Modell zu entnehmen. Hierfuer gelten die angegebenen Allgemeintoleranzen. MISSING DIMENSIONS ALT. RADII SEE ON CAD-MODELL. THEREFORE THE GENERAL-TOLERANCES ARE VALID.
- Teilekennzeichnung angelehnt an DIN 1451 / PART IDENTIFICATION SIMILAR DIN 1451
- Teil entspricht Altautorichtlinie nach EU-Altfahrzeugverordnung 2000/53/EG / PART CORRESPONDS TO SCRAP CAR GUIDELINE ...
- Entformschraegen innerhalb der Toleranzen / DRAFT ANGLE WITHIN TOLERANCE.
- max. Formversatz ±0.05 / MAX. SPLIT LINE ±0.05
- max. Formtrenngrat 0.2 / MAX. BURR 0.2
- Formnestkennzeichnung: X.Y
X = Werkzeug Nr.
Y = Formnest Nr.
MOULD CAVITY MARKING: X.Y
X = MOULD NUMBER
Y = MOULD CAVITY NUMBER
- Verpackung: siehe Verpackungshinweis / PACKING: ACCORDING PACKING GUIDELINE
- Technische Sauberkeit:
metallische Partikel > 600µ nicht zulaessig
nicht metallische Partikel > 1000µ nicht zulaessig
TECHNICAL CLEANLINESS:
METALLIC PARTICLE > 600µ NOT ALLOWED
NOT METALLIC PARTICLE > 1000µ NOT ALLOWED
- Einwegartikel
DISPOSABLE PART

| | | | | |
|--|--|--|---|----------------------------|
| 00 | Ersterstellung / Initial Edition | | 28.09.2017 | BAS |
| Version | Anzahl numb. of | Aenderungsbeschreibung / description of alteration | | Datum date |
| Pruefvorschriften / test instructions | | | | |
| Rohzustand / crude state | | Werkstoff / material | Fertigzustand / final state | Rohgewicht gross weight |
| | | | | g/Stk g/pc |
| | | | | Fertig-gw. final weight |
| | | | | g/Stk g/pc |
| Material-Nr. / No. | Toleranzen / tolerances | | Oberfl. surface | Abfall scrap |
| | Werkstueckkanten / edges | | cm² / Stk /pc | % |
| | DIN ISO 13715 | | dimensions in millimeters | CAD System/ Version |
| | Form- u. Lagetoleranzen / geometric tolerances | | 2:1 | CATIA V5 |
| Datum / date | Name / name | | Benennung title | |
| 28.09.2017 | Bas | | Transporterschutzkappe Aggregateanschluss | |
| geprueft checked | 07.09.2018 | Weiss | Typ type | |
| freigegeben released | 07.09.2018 | Schmid | Hirschmann PowerStar40-2 | |
| HIRSCHMANN AUTOMOTIVE | | BS | | Blatt / Sheet von / of |
| Oberer Paspelweg 6-8 A-6830 Rankweil-Brederis | | Zeichnungs - Nr. drawing - No. | | 706-673-...00 |
| Ursprung / origin | | Ersatz fuer replacement | | DNR 100000231209 |

| | | | | |
|-------------------------------|---------|-----------------|----------------------|-------------------|
| 706-673-501 | A | natur / NATURAL | PP 400-GA05 | 1,34g |
| Erz. Nr. Index PART NUMBER | HA Rev. | Farbe COLOR | Material MATERIAL | Gewicht WEIGHT |

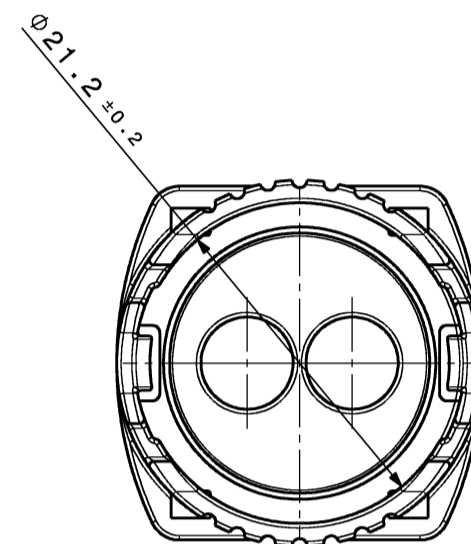
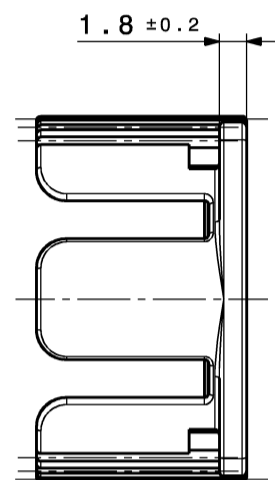
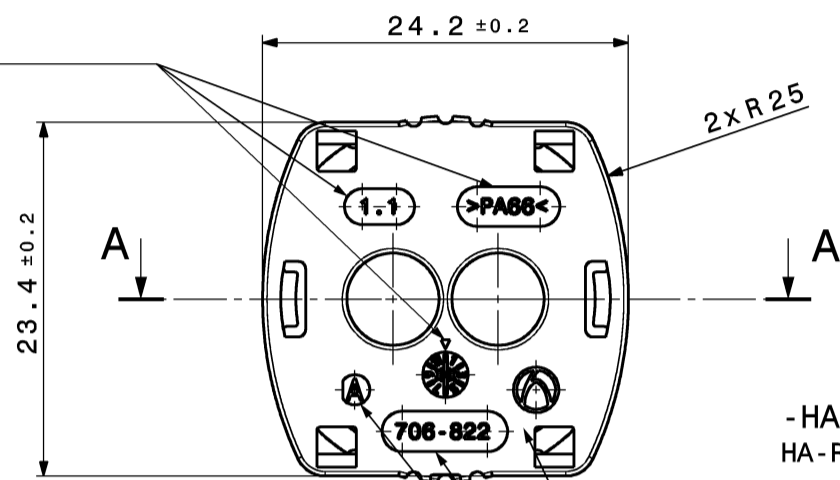
Plot from: TNAITER on 06.08.2022 Doc.Vers. 00 Valid from: 2020-04-26 Valid until: ... Status: Kundenfreigabe

This materials contain information protected by copyright.
 No part of this materials may be photocopied, otherwise
 reproduced or translated into another language without
 the prior written consent of Hirschmann.
 All Rights reserved.

-Datum D3
vertieft-erhaben
DATE D3
RECESSED-RAISED

-Materialkennzeichnung
vertieft-erhaben
MATERIAL DESCRIPTION
RECESSED-RAISED

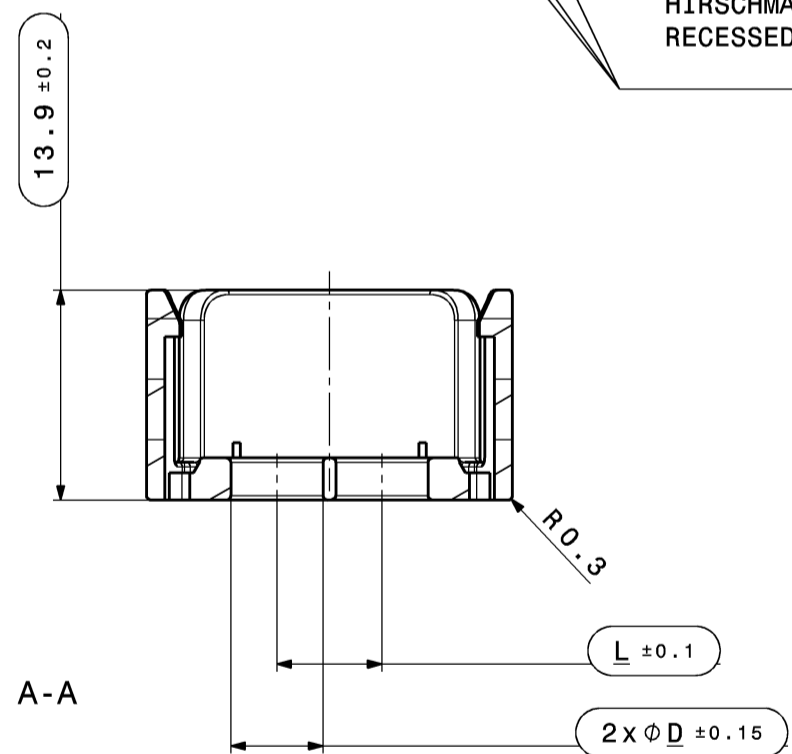
-Formteilnummer
vertieft-erhaben
CAVITY-NUMBER
RECESSED-RAISED



-HA-Revision
HA-Revision

-Firmenzeichen
vertieft-erhaben
COMPANY SIGN
RECESSED-RAISED

-Hirschmann Nr.
vertieft-erhaben
HIRSCHMANN NO.
RECESSED-RAISED



Schnittansicht A-A
CUT SECTION A-A

Toleranzen fuer nicht tolerierte Masse:

- Winkelmasse: (in °)
Fuer alle Winkelmasse gilt ±2°
- Radien: (in mm)

| | | | | | |
|-------|------|------|-------|-------|-------|
| bis 1 | 1-3 | 3-10 | 10-20 | 20-30 | 30-50 |
| ±0.2 | ±0.3 | ±0.4 | ±0.5 | ±1 | ±2 |

- Laengenmasse: DIN 2768-mH
- Allgemeintoleranz fuer Symmetrie: $\equiv 0.2$

TOLERANCES FOR UNTOLERATED DIMENSIONS:

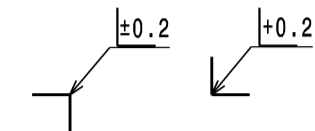
- ANGLE-DIMENSIONS (IN °)
TOLERANCE FOR ALL ANGLE-DIMENSIONS: ±2°
- RADII: (IN mm)

| | | | | | |
|------|------|------|-------|-------|-------|
| TO 1 | 1-3 | 3-10 | 10-20 | 20-30 | 30-50 |
| ±0.2 | ±0.3 | ±0.4 | ±0.5 | ±1 | ±2 |

- DISTANCE-DIMENSIONS: DIN 2768-mH
- GENERAL TOLERANCE FOR SYMMETRY: $\equiv 0.2$

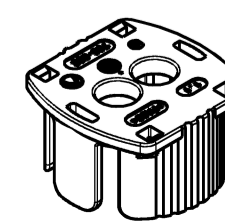
Bemerkungen:
REMARKS:

- unbemasste Radien R0.2mm
UNDIMENSIONED RADII R0.2MM
- Fehlende Masse laut 3D-Daten!
SEE 3D-DATA FOR MISSING DIMENSIONS!
- max. Formversatz ±0.05
MAX. SPLIT LINE ±0.05
- Massgebend ist der deutsche Text
GERMAN TEXT IS VALID
- max. 30% Regranulat zulaessig
MAX. 30% RECLAIM ACCEPTABLE



01

| Erz. Nr. Index PART NUMBER | Bezeichnung NAME | Querschnitt CROSS-SECTION | Farbe COLOUR | ØD | L | HA. Rev |
|-------------------------------|--|------------------------------|----------------------------|------|------|---------|
| 706-822-505 | HPS40-2 Haltekappe SCC HPS40-2 PROTECTION CAP SCC | 6,0mm ² SCC | rot / RED -RAL 3024 | 6,65 | 7,50 | A |
| 706-822-504 | | 5,0mm ² SCC | gruen / GREEN -RAL 6018 | 5,75 | 6,60 | A |
| 706-822-503 | | 4,0mm ² SCC | grau / GREY -RAL 7040 | 6,10 | 6,95 | A |
| 706-822-502 | | 3,0mm ² SCC | blau / BLUE -RAL 5012 | 5,75 | 6,60 | A |
| 706-822-501 | | 2,5mm ² SCC | beige / FAWN -RAL 1001 | FBD | FBD | A |

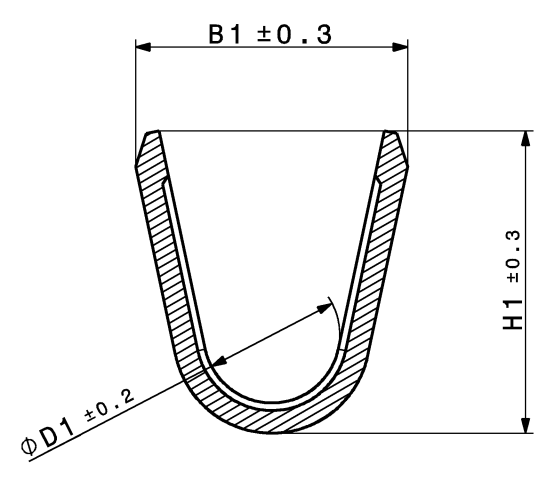
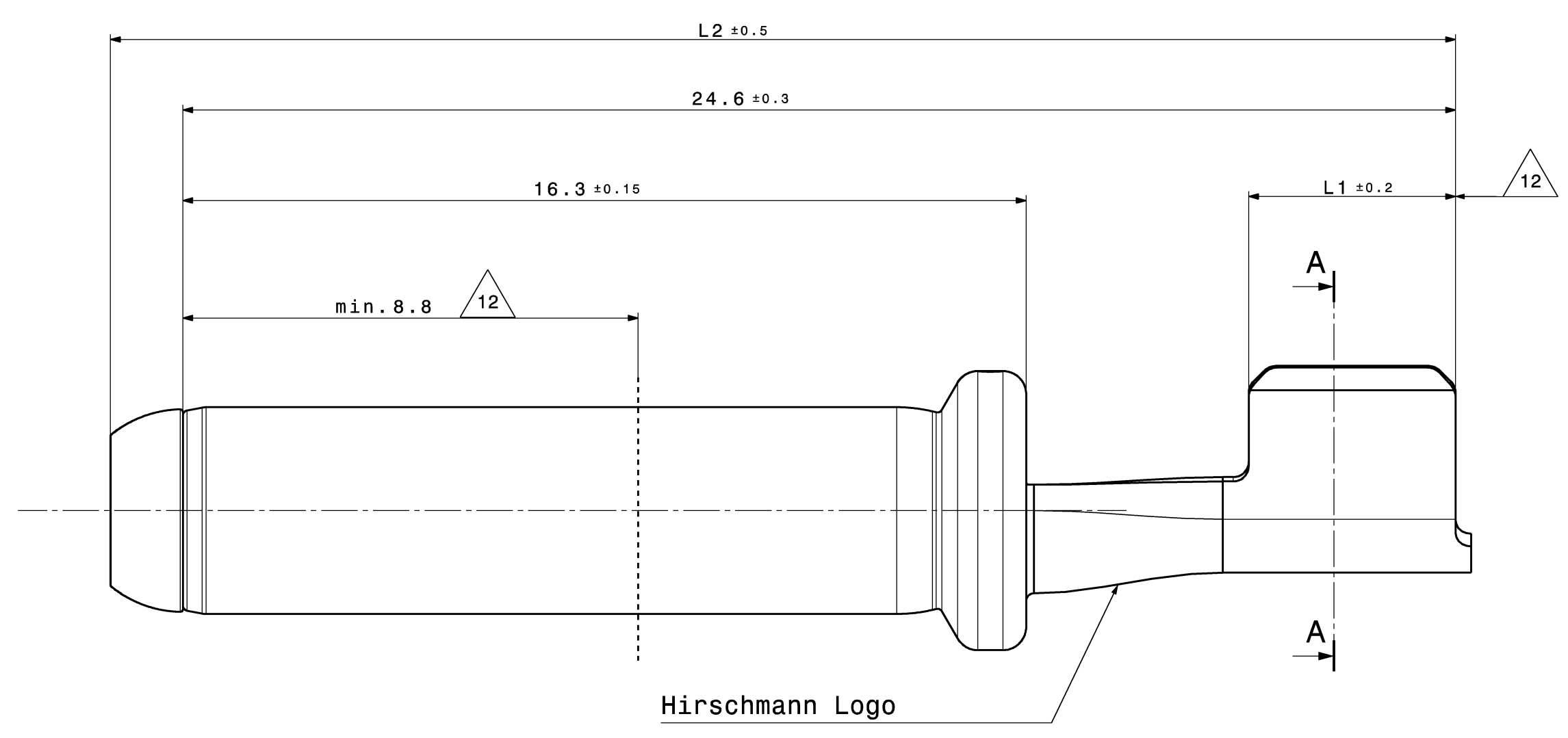


Isometrische Ansicht
Maßstab: 1:1
ISOMETRIC VIEW
SCALE: 1:1

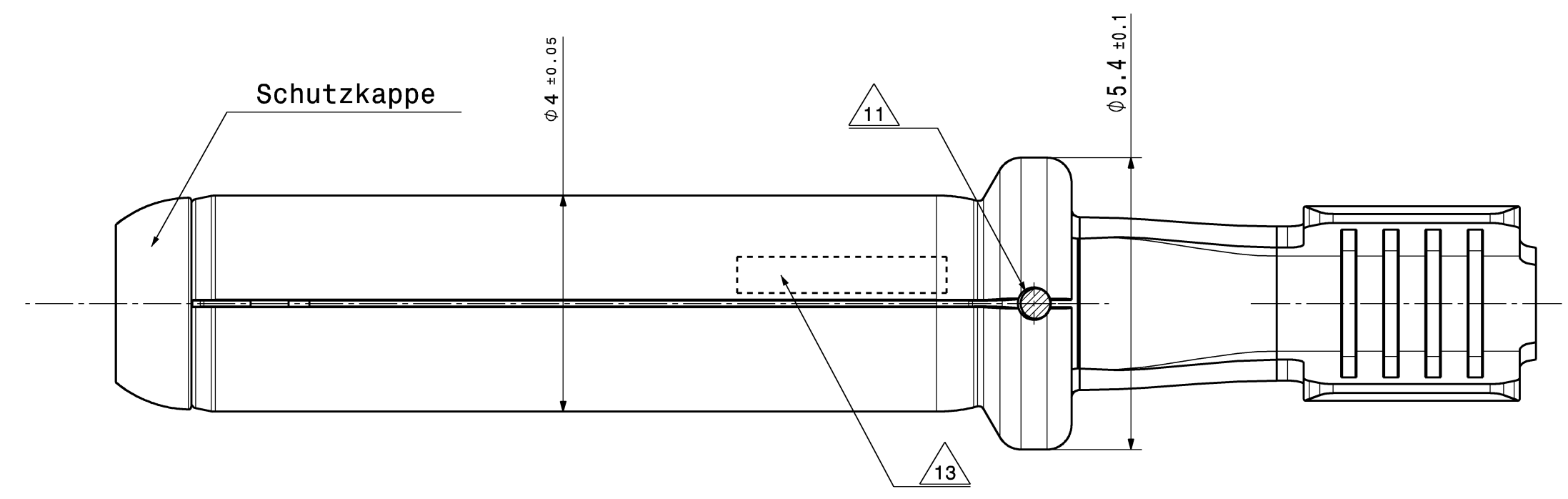
| | | | | | | | | |
|--|----|--|---|--|-----------------------|----------------------------|------------------------|---------------|
| Version | 01 | Anzahl | 1 | Aenderungsbeschreibung / description of alteration | | Datum | 25.06.2019 | RHO |
| Version | 00 | num. of | | Ersterstellung / Initial edition | | Datum | 02.02.2018 | IVA |
| Pruefvorschriften / test instructions | | | | | | | | |
| Rohzustand / crude state | | Werkstoff / material | | Fertigzustand / final state | | Rohgewicht gross weight | | g/Stk g/pc |
| | | | | | | Fertig-gw. final weight | | g/Stk g/pc |
| Material-Nr. / No. | | Toleranzen / tolerances | | | Oberfl. surface | | Abfall scrap | |
| 101-285-000 | | Werkstueckkanten / edges DIN ISO 13715 | | | in millimeters | | % | |
| | | Form- u. Lagetoleranzen / geometric tolerances DIN ISO 1101 | | | Massstab/scale 2:1 | | CAD System/ Version | |
| | | | | | in | | CATIA V5 | |
| Gezeichnet drawn | | Datum / date | | Name / name | | Benennung title | | |
| 05.07.2019 | | 25.06.2019 | | R.Hoor | | HPS40-2 Haltekappe SCC | | |
| geprueft checked | | 05.07.2019 | | L.Breuss | | Typ type | | |
| freigegeben released | | 05.07.2019 | | L.Breuss | | CDI | | |
| HIRSCHMANN AUTOMOTIVE | | BS | | Zeichnungs - Nr. drawing - No. | | Blatt / Sheet von / of | | |
| Oberer Paspelweg 6-8 A-6830 Rankweil-Brederis | | Ursprung / origin | | Ersatz fuer replacement | | DNR 100000239579 | | |

Plot from: TNAITER on 06.07.2021 Doc.Vers. 01 Valid from: 20190705 Valid until: ... Status: Kundenfreigabe

| Bem. NOTE | Merkmal FEATURE | Hirschmann Automotive No. |
|-----------|--|---------------------------|
| 15 | Produktspezifikation PRODUCT SPEC | EPS-100068 |
| 16 | Verarbeitungsspezifikation APPLICATION SPEC | EVS-100068 |
| 17 | passender Buchsenkontakt HCT4 Female MATCHING FEMALE CONTACT: HCT4 FEMALE | 709-427 |



Schnitt A-A
Maßstab: 10:1



Bemerkungen:
NOTES:

- DGB = Draht-Groessen-Bereich
DGB = WIRE SIZE RANGE
- Maszgebend ist der deutsche Text.
GERMAN TEXT IS VALID.
- Nur fuer Leitungen mit Leiteraufbau gemaez ISO 6722-1
FOR CONDUCTORS WITH CONDUCTOR CONSTRUCTION ACCORDING TO ISO 6722-1
- Verarbeitung nach HRW Spezifikation und entsprechenden Kundenvorschriften
PROCESSING ACCORDING TO HRW SPECIFICATION AND CORRESPONDING CUSTOMER REQUIREMENTS
- Maszgebend ist die aktuelle Version der Produkt- und Verarbeitungs-Spez.
ONLY THE ACTUAL VERSION OF THE PRODUCT- AND APPLICATION SPEZ. IS VALID
- Entnahmewerkzeug: siehe Verarbeitungsspez. Gehaeusetteile
TAKING OUT TOOL: SEE APPLICATION-SPEC HOUSING PARTS
- Aenderungen die dem technischen Fortschritt dienen, behaelt der Hersteller sich vor.
THE MANUFACTUER RESERVES THE RIGHT TO MAKE CHANGES WHICH SERVE THE PURPOSE OF TECHNICAL PROGRESS.
- Einzelheiten der Ausfuehrung bleiben dem Hersteller ueberlassen.
THE MANUFACTURER CAN CHANGE DETAILS OF THE DESIGN.
- Dargestellte Variante: 709-633-501
SHOWN VERSION: 709-633-501
- Pruefungen nach AK-Pruefrichtlinie GS95031-2, Ausgabe 2013-05
Details sind der Produktspezifikation zu entnehmen
TESTING ACCORDING TO AK-TEST GUIDELINE GS95031-2, EDITION 2013-05
DETAILS SEE PRODUCT SPECIFICATION

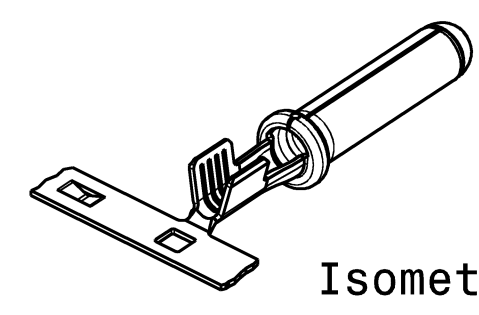
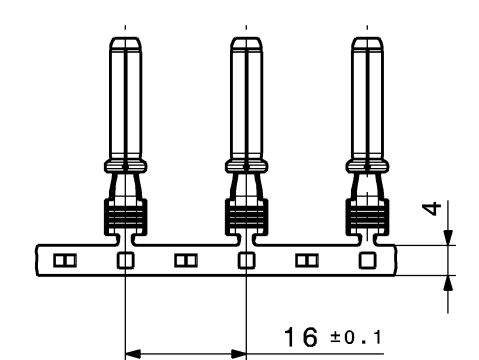
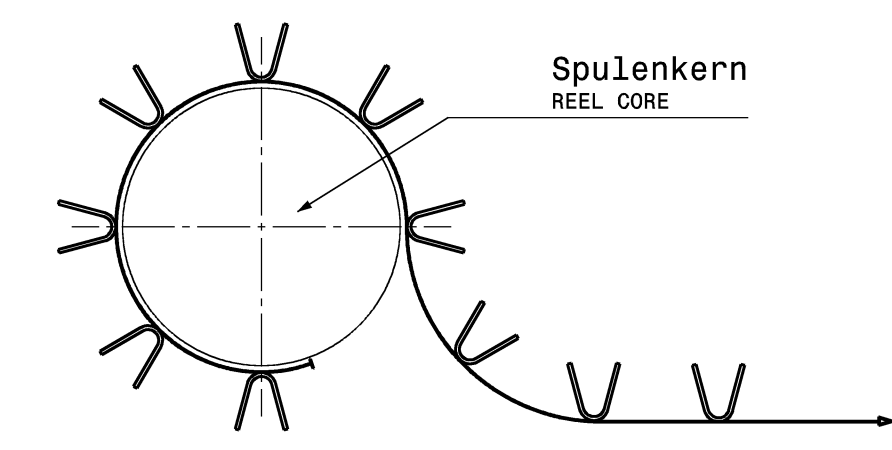
- 11 Lasergeschweiszt
LASER WELDED
- 12 Oberflaeche Kontakt- und Crimpzone Innen selektiv: siehe Tabelle
Haft- und Sperrschicht nicht selektiv: Ni1-3
SURFACE CONTACT- AND CRIMP ZONE SELECTIVE: SEE TABLE
BARRIER LAYER NOT SELECTIVE: NI1-3

13 Datumscode, Produkt-Index u. Teile Rev. Stand
DATE-CODE, INDEX-MARKING AND PART REV. INDEX

| Kodierungsschlüssel CODING KEY | Anzahl Kodiermerkmale CODING AMOUNT FEATURES |
|---|---|
| Tag: DAY: 1,2,3, ... A(10), B(11), ... V(31) | 1 |
| Monat: MONTH: A(Jan), B(Feb), C(Maerz), ... L(Dez) | |
| Jahr: YEAR: A(2010),B(2011), C(2012), ... Z(2036) | |
| Stunde: HOUR: A(01),B(02), C(03), ... X(24) | |
| Produkt-Index: PRODUCT-INDEX: 01,02,03, ... 99 | 2 |
| Teile Rev. Stand: PART REV. INDEX: A,B,C, ... Z | 1 |

Beispiel-Kodierung:
CODING-SAMPLE:
FGCM01A = F(Tag_15), G(Monat_7), C(Jahr_2012), M(Stunde_13), 01(Produkt-Index_709-125-501), A(Teile Rev. Stand_A)

14 Abspulrichtung: Linkseinlauf
UNWIND DIRECTION: LEFT ENTRY



Isometrische Ansicht
Maßstab: 2:1

| 709-633-506 | - | A | Schutzkappe PROTECTION CAP | - | PA66-GF30 | 6 | 6.58 | 5.75 | 3 | 4.6 | 27.45 | 1.25 |
|------------------------|---------------------------|------|-------------------------------|------------------------|---------------------------------|---------------------------|------|------|-----|-----|-------|--------------------------|
| | | | Kontaktkoerper BODY | part. Ag | Cu-Leg. | | | | | | | |
| 709-633-505 | - | A | Schutzkappe PROTECTION CAP | - | PA66-GF30 | 4 | 5.9 | 5.4 | 3 | 4.6 | 27.45 | 1.03 |
| | | | Kontaktkoerper BODY | part. Ag | Cu-Leg. | | | | | | | |
| 709-633-504 | - | A | Schutzkappe PROTECTION CAP | - | PA66-GF30 | 1.5 | 4.1 | 3.6 | 1.8 | 4 | 27.45 | 0.93 |
| | | | Kontaktkoerper BODY | part. Ag | Cu-Leg. | | | | | | | |
| 709-633-503 | - | A | Schutzkappe PROTECTION CAP | - | PA66-GF30 | 6 | 6.58 | 5.75 | 3 | 4.6 | 26 | 1.25 |
| | | | Kontaktkoerper BODY | part. Ag | Cu-Leg. | | | | | | | |
| 709-633-502 | - | A | Schutzkappe PROTECTION CAP | - | PA66-GF30 | 4 | 5.9 | 5.4 | 3 | 4.6 | 26 | 1.03 |
| | | | Kontaktkoerper BODY | part. Ag | Cu-Leg. | | | | | | | |
| 709-633-501 | - | A | Schutzkappe PROTECTION CAP | - | PA66-GF30 | 1.5 | 4.1 | 3.6 | 1.8 | 4 | 26 | 0.93 |
| | | | Kontaktkoerper BODY | part. Ag | Cu-Leg. | | | | | | | |
| Bandware STRIP FORM | Einzelware LOOSE PIECE | REV. | Bauteil ELEMENT | Oberflaeche SURFACE | Werkstoff MATERIAL (BODY) | DGB WIRE SIZE RANGE | H1 | B1 | D1 | L1 | L2 | Gewicht WEIGHT [g] |

02 added indices -504/ -505/ -506 with new protection cap;
01 Index 502 -> order number updated; identification drawn
00 Ersterstellung / Initial Edition

21.09.2017 FSC
18.07.2017 MS
10.02.2014 JBL

Version: 00
Date: 21.09.2017
Author: [Name]

Pruefvorschriften / test instructions

Material-Nr. / No. Toleranzen / tolerances 2788-m
Werkstoffueckanten / edges DIN ISO 13715
Form- u. Lagetoleranzen / geometric tolerances DIN ISO 1101

DIN A1
HCT4 MALE SHORT
CDI
709-633-...00

Controlled status available in the system!

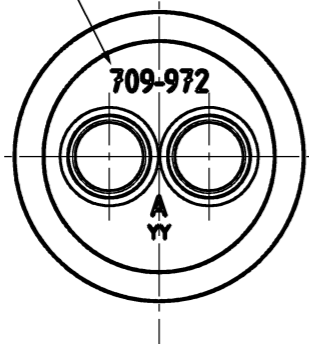
This material contains information protected by copyright. No part of this material may be reproduced or transmitted in any form or by any means electronic or mechanical, including photocopying and recording, or by any information storage or retrieval system, without the prior written consent of Hirschmann Automotive AG.

Diese Unterlagen sind unser Eigentum. Jede Vervielfaeltigung, Verbreitung oder Weitergabe ist ohne schriftliche Genehmigung von Hirschmann Automotive AG.

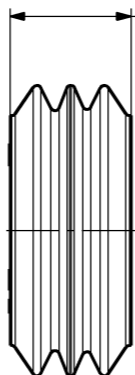
Plot from: T:\MATER on 12.02.2021 Doc.Vers. 02 ... Status: Kundenfreigabe

This materials contain information protected by copyright. No part of this materials may be photocopied, otherwise reproduced or translated into another language without the prior written consent of Hirschmann. All rights reserved.

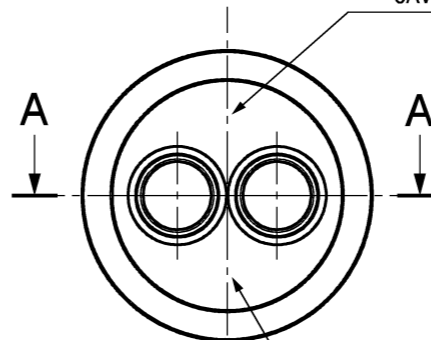
Beschriftung
LETTERING



8 ± 0.15

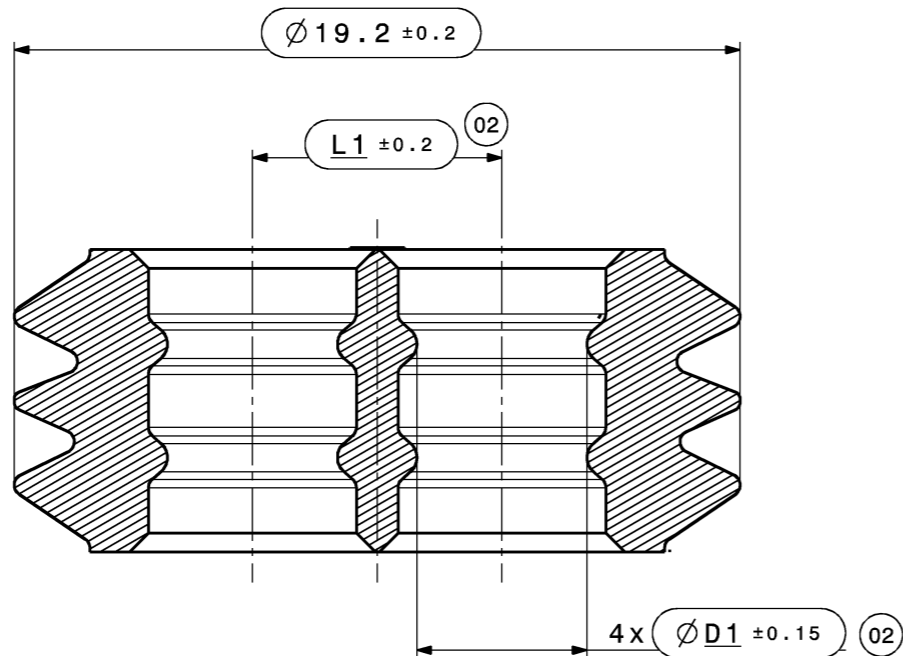


Nest-Nr. "1" - "..."
CAVITY-NO. "1" - "..."



Quadrant-Nr. "1" - "..."
QUADR.-NO. "1" - "..."

Schnittansicht A-A
SECTION CUT A-A
Maßstab: 5:1
SCALE: 5:1



Bemerkungen:
COMMENTS:

- Auslieferungszustand wie gezeichnet
DELIVERY STATUS AS DRAWN
- Massgebend ist der deutsche Text
GERMAN TEXT IS VALID
- Funktionsbestimmende Masse, die mit 02 gekennzeichnet sind, werden im EMPB dokumentiert. Nicht gekennzeichnete Masse werden ebenfalls ausgemessen, aber nicht im EMPB dokumentiert. Abweichungen sind zu korrigieren.
DIMENSIONS MARKED WITH 02 ARE DOCUMENTED IN THE INITIAL SAMPLE INSPECTION REPORT (ISIR). UNMARKED DIMENSIONS ARE ALSO MEASURED BUT NOT DOCUMENTED IN THE ISIR. VARIATIONS MUST BE CORRECTED.
- Verpackung siehe Hirschmann Verpackungshinweis / PACKAGE SEE HIRSCHMANN PACKAGE INSTRUCTION
- Die freigegebenen Meterwaren je Dichtung sind der ZB Buchsengehäusezeichnung zu entnehmen.
THE RELEASED CABLES FOR EACH SEAL CAN BE FOUND ON THE ZB FEMALE HOUSING DRAWING. 807-655-...00



Isometrische Ansicht
ISOMETRIC VIEW
Maßstab: 1:1
SCALE: 1:1

| | | | | | | |
|-------------------------------|-----------------------------|--------|--------|--------------------------|-------|------------------------|
| 709-972-504 | Dichtung SCC SEAL SCC | 5,2 mm | 7,5 mm | Rot / RED RAL 3024 | 1,6 g | 6,0mm ² SCC |
| 709-972-503 | | 4,5 mm | 6,6 mm | Grün / GREEN RAL 6018 | 1,7 g | 5,0mm ² SCC |
| 709-972-502 | | | | Grau / GREY RAL 7040 | | 4,0mm ² SCC |
| 709-972-501 | | | | Blau / BLUE RAL 5005 | | 3,0mm ² SCC |
| Erz. Nr. Index PART NUMBER | | | | Bezeichnung NAME | | ØD1 |

| | | | | |
|--|---|---|---------------------------------|--|
| 02 | corrected dimensions; added comment; | | 06.05.2019 | TKL |
| 01 | Added Ind.502/503/504/505 and dimension L | | 28.03.2018 | RHO |
| 00 | Ersterstellung / Initial edition | | 11.05.2016 | JSC |
| Version | Anzahl humb. of | Aenderungsbeschreibung / description of alteration | Datum date | gez. drwn |
| Pruefvorschriften / test instructions | | | | |
| Rohzustand / crude state | | Werkstoff / material Silicon 50 ±5 ShoreA | Fertigzustand / final state | Rohgewicht gross weight g/Stk g/pc |
| Material-Nr. / No. | | Toleranzen / tolerances DIN ISO 3302-1 M2C | Oberfl. surface | Fertig-gw. final weight g/Stk g/pc |
| | | Werkstueckkanten / edges DIN ISO 13715 | dimensions in millimeters | Abfall scrap % |
| | | Form- u. Lagetoleranzen / geometric tolerances DIN ISO 1101 | Massstab/scale 2:1 | CAD System/ Version CATIA V5 |
| Gezeichnet drawn | Datum / date | Name / name | Benennung title Seal SCC | |
| geprueft checked | 06.05.2019 | T.Kleiner | DIN A3 | |
| freigeg. released | 05.07.2019 | L.Breuss | CDI | |
| HIRSCHMANN AUTOMOTIVE | | Zeichnungs - Nr. drawing - No. 709-972-...00 | | Blatt / Sheet von / of 1 / 1 |
| Oberer Paspelweg 6-8 A-6830 Rankweil-Brederis | | Ursprung / origin | | Ersatz fuer replacement DNR 100000186344 |

Diese Unterlage ist unser Eigentum. Jede Vervielfaeltigung, Verwertung, Mitteilung bzw. Weitergabe an Dritte ohne unsere vorherige Zustimmung ist untersagt. Zuwiderhandlungen verpflichten zu Schadenersatz. Alle Rechte fuer den Fall der Patenterteilung, Gebrauchs- bzw. Geschmacks-mustereintragung vorbehalten.

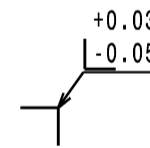
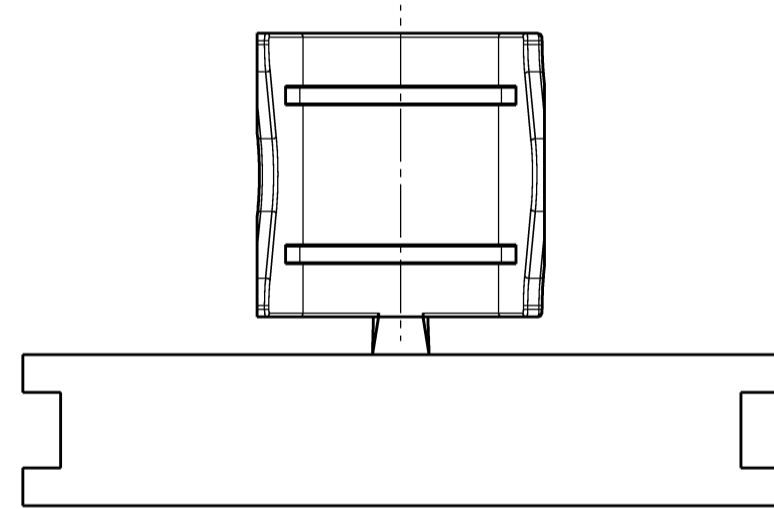
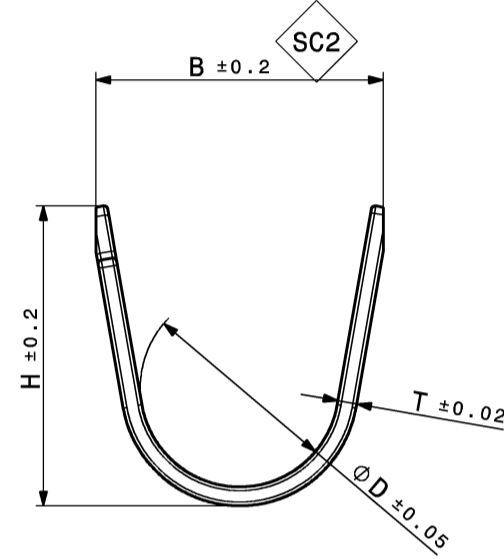
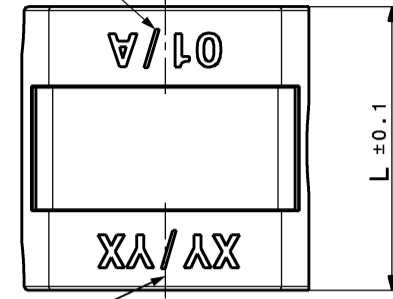
Plot from: TNATER on 06.07.2021 Doc.Vers. 02 Valid from: 20190705 Valid until: ... Status: Kundenfreigabe

Controlled status available in the system!

Freigegeben

Beschriftung / LETTERING:
 - A = Revision / REVISION
 - 01 = Kennzeichnung / MARKING
 siehe Tabelle / SEE TABLE

Beschriftung / LETTERING:
 - XY = Jahr / YEAR
 - YX = KW / CW

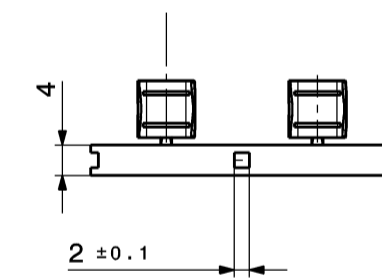
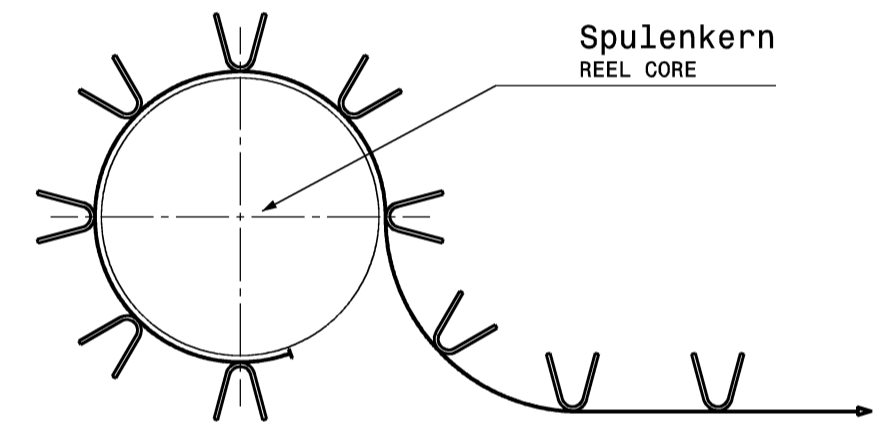


alle Stanzkanten
 ALL BLANKING EDGES

Bemerkungen:
 NOTES:

- 1 Bauteilekennzeichnung:
 - Stempel: Kalenderwoche (KW), Jahr (z.B. 26.04.2016 = 17/16)
 Kennzeichnung und Revisionsstand (z.B. 01/A)
 COMPONENT IDENTIFICATION:
 - STAMP: CALENDER WEEK (CW), YEAR (E.G. 26.04.2016 = 17/16)
 MARKING AND REVISION (E.G. 01/A)
- 2 Massgebend ist der deutsche Text / GERMAN TEXT IS VALID
- 3 Fehlende Masse sind dem 3D-Modell zu entnehmen
 MISSING DIMENSIONS SEE ON 3D-MODEL
- 4 Teilekennzeichnung angelehnt an DIN 1451
 PART MAKING ACCORDING TO DIN 1451
- 5 Massliche und darstellerische Abweichungen gegenüber Detailzeichnungen sind vernachlässigbar. Massgebend sind die Detailzeichnungen.
 DIMENSIONAL AND ILLUSTRATED DEVIATIONS TOWARDS THE DETAILED DRAWINGS ARE INSIGNIFICANT.
 AUTHORITATIVE ARE THE DETAILED DRAWINGS.
- 6 Fuer nicht tolerierte Masse < 0.5mm gilt eine Toleranz von ±0.1mm
 FOR UNTOLERANCED DIMENSIONS < 0.5MM A TOLERANCE OF ±0.1MM IS VALID
- 7 Stanzkanten duerfen blank sein
 BLANKING EDGES MAY BE BARE
- 8 Max. Stanzgrat fuer die Freistanzung = 0,2 mm
 MAX. BURR FROM PUNCHING = 0,2 mm
- 9 Oberflaechenspannung >= 36 N/mm²
 SURFACE TENSION >= 36 N/mm²

SC2 SC4 besondere Merkmale laut Hirschmannvorschrift AA-031
 SPECIFIC CHARACTERISTICS ACCORDING TO THE HIRSCHMANN INSTRUCTIONS AA-031



| Erz. Nr.-Index PART NUMBER | Bezeichnung NAME | Querschnitt CROSS-SECTION | Kennzeichnung MARKING | Teile Rev. Stand PART REV. INDEX | ØD | B | L | H | T | Ausfuehrung VERSION |
|-------------------------------|---|------------------------------|--------------------------|-------------------------------------|------|------|------|------|------|------------------------|
| 710-195-504 | HPS40-2 SCC Mantelcrimp FERRULE CRIMP | 6,0mm² | 06 | A | 4.65 | 7.50 | 7.50 | 7.98 | 0.80 | Am Band REELED |
| 710-195-503 | | 5,0mm² | 05 | A | | | | | | |
| 710-195-502 | | 4,0mm² | 04 | A | 5.40 | | | 7.94 | 0.50 | |
| 710-195-501 | | 3,0mm² | 03 | A | | | | | | |

Isometrische Ansicht
 Maßstab: 1:1
 ISOMETRIC VIEW
 SCALE: 1:1

| | | | | |
|--|--------------------|---|------------------------------|----------------------------|
| 02 | 1 | ACTIVATED INDEX 504 (6mm²) UPDATED DIMENSION ØD TO 5.40 (former: 5.25) Ersterstellung / Initial edition | 25.06.2019 | RHO |
| 01 | | | 27.05.2019 | RHO |
| 00 | | | 02.02.2018 | IVA |
| Version | Anzahl numb. of | Aenderungsbeschreibung / description of alteration | Datum date | gez. drwn |
| Pruefvorschriften / test instructions | | | | |
| Rohzustand / crude state | | Werkstoff / material | Fertigzustand / final state | Rohgewicht gross weight |
| | | | | g/Stk g/pc |
| | | | | Fertig-gw. final weight |
| | | | | g/Stk g/pc |
| Material-Nr. / No. | | Toleranzen / tolerances | Oberfl. surface | Abfall scrap |
| | | Werkstueckkanten / edges | cm² / Stk /pc | % |
| | | DIN ISO 13715 | dimensions in millimeters | Massstab/scale 5:1 |
| | | Form- u. Lagetoleranzen / geometric tolerances | DIN ISO 1101 | |
| Gezeichnet drawn | Datum / date | Name / name | Benennung title | |
| 25.06.2019 | R.Hoor | | HPS40-2 SCC Mantelcrimp | |
| geprueft checked | 05.07.2019 | L.Breuss | Typ type | |
| Freigig. released | 05.07.2019 | L.Breuss | HPS40-2 SCC FERRULE CRIMP | |
| HIRSCHMANN AUTOMOTIVE | | Zeichnungs - Nr. drawing - No. | | Blatt / Sheet von / of |
| Oberer Paspelweg 6-8 A-6830 Rankweil-Brederis | | 710-195-...00 | | 1 / 1 |
| Ursprung / origin | | Ersatz fuer replacement | | DNR 100000239582 |

This materials contain information protected by copyright.
 No part of this materials may be photocopied, otherwise
 reproduced or translated into another language without
 the prior written consent of Hirschmann.
 All Rights reserved.

Diese Unterlage ist unser Eigentum. Jede Vervielfaeltigung, Verwertung,
 Mitteilung bzw. Weitergabe an Dritte ohne unsere vorherige Zustimmung
 ist untersagt. Zuwiderhandlungen verpflichten zu Schadenersatz. Alle
 Rechte fuer den Fall der Patenterteilung, Gebrauchs- bzw. Geschmacks-
 markenrechtliche Vorbehalten.

Plot from: TNATTER on 06.07.2021 Doc.Vers. 02 Valid from: 20190705 Valid until: ... Status: Kundenfreigabe

This materials contain information protected by copyright.
 No part of this materials may be photocopied, otherwise
 reproduced or translated into another language without
 the prior written consent of Hirschmann.
 All rights reserved.

Toleranzen fuer nicht tolerierte Masse:

1. Winkelmasse: (in °)
Fuer alle Winkelmasse gilt ±2°
2. Radien : (in mm)

| | | | | | |
|-------|------|------|-------|-------|-------|
| bis 1 | 1-3 | 3-10 | 10-20 | 20-30 | 30-50 |
| ±0.2 | ±0.3 | ±0.4 | ±0.5 | ±1 | ±2 |

3. Laengenmasse :
DIN 2768-mH
4. Allgemeintoleranz fuer Symmetrie: $\begin{matrix} \text{---} \\ \text{---} \\ \text{---} \end{matrix} 0.2$

TOLERANCES FOR UNTOLERATED DIMENSIONS:

1. ANGLE-DEMENSIONS (IN °)
TOLERANCE FOR ALL ANGLE-DIMENSIONS: ±2°
2. RADII : (IN mm)

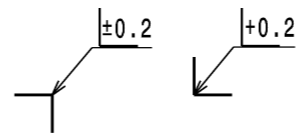
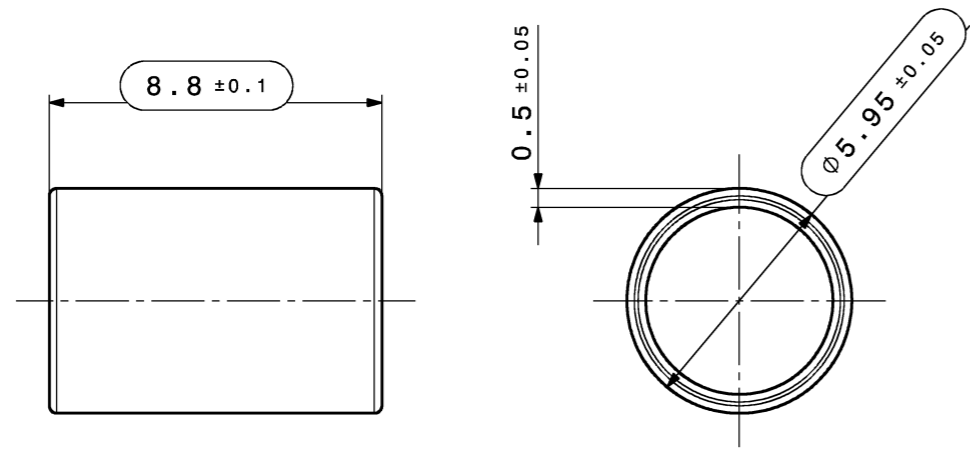
| | | | | | |
|------|------|------|-------|-------|-------|
| TO 1 | 1-3 | 3-10 | 10-20 | 20-30 | 30-50 |
| ±0.2 | ±0.3 | ±0.4 | ±0.5 | ±1 | ±2 |

3. DISTANCE-DIMENSIONS:
DIN 2768-mH
4. GENERAL TOLERANCE FOR SYMMETRY: $\begin{matrix} \text{---} \\ \text{---} \\ \text{---} \end{matrix} 0.2$

Bemerkungen:

COMMENTS:

1. massgebend ist der deutsche Text / GERMAN TEXT IS VALID
3. unbemasste Radien R0.2mm / UNDIMENSIONED RADII R0.2mm
4. Funktionsbestimmende Maße, die mit --- gekennzeichnet sind, werden im EMPB dokumentiert. Nicht gekennzeichnete Maße werde ebenfalls ausgemessen, aber nicht im EMPB dokumentiert. Abweichungen sind zu korrigieren.
DIMENSIONS WITH --- ARE DOCUMENTED IN THE INITIAL SAMPLE INSPECTION PREORT (ISIR).
UNMARKED DIMENSIONS ARE ALSO MEASURED BUT NOT DOCUMENTED IN THE ISIR. VARIATIONS MUST BE CORRECTED.
5. Teil entspricht Altautorichtlinie nach DBL 8585
PART CORRESPONDS TO SCRAP CAR GUIDELINE DBL 8585



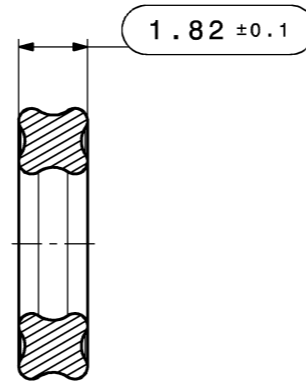
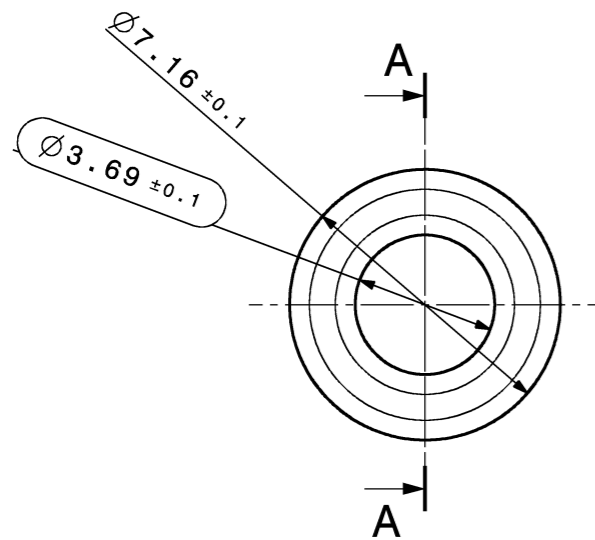
Isometrische Ansicht
 Maßstab: 1:1
 ISOMETRIC VIEW
 SCALE: 1:1

| | | | |
|-------------------------------|------------------------------|------------------------------|-------------------------------------|
| 710-671-501 | Stuetzhuese STRAIN-RELIEF | 6mm ² SCC | A |
| Erz. Nr.-Index PART NUMBER | Bezeichnung NAME | Querschnitt CROSS-SECTION | Teile Rev. Stand PART REV. INDEX |

| | | | | |
|---|--------------------------------------|---------------------------|---|--|
| 00 | Ersterstellung / Initial edition | | 12.02.2020 | RHO |
| Version | Numb. of | Description of alteration | Date | drwn |
| Test instructions | | | | |
| Crude state | | Material 1.4301 | Final state | Gross weight g/pc Final weight g/pc |
| Material-No. | Tolerances EN ISO 8015 | Edges DIN ISO 13715 | Surface cm ² /pc | Scrap % |
| | Geometric tolerances DIN ISO 1101 | | dimensions in millimeters Scale 5:1 | CAD System/Version CATIA V5 |
| Drawn | Date 12.02.2020 | Name R.Hoor | Title HPS40-2 SCC Stuetzhuese 6mm ² | |
| Checked | Date 12.02.2020 | Name L.Breuss | Type DIN A3 | |
| Released | Date 12.02.2020 | Name L.Breuss | Type CDI | |
| HIRSCHMANN AUTOMOTIVE | | | Drawing - No. 710-671-...00 | |
| Oberer Paspelsweg 6-8 A-6830 Rankweil-Brederis | | | Origin | Replacement |

Plot from: TNATER on 07.07.2021 Doc.Vers. 00 Valid from: 20200212 Valid until: ... Status: Kundenfreigabe

This materials contain information protected by copyright.
 No part of this materials may be photocopied, otherwise
 reproduced or translated into another language without
 the prior written consent of Hirschmann.
 All rights reserved.



Schnittansicht A-A
 Maßstab: 5:1
 CUT-SECTION A-A
 SCALE: 5:1



Isometrische Ansicht
 ISOMETRIC VIEW
 Maßstab: 1:1
 SCALE: 1:1

Bemerkungen:
COMMENTS:

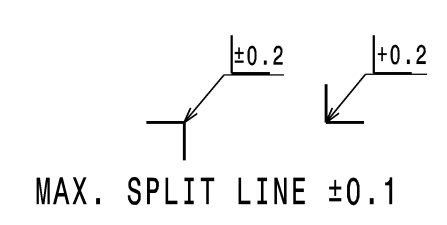
- Auslieferungszustand wie gezeichnet
DELIVERY STATUS AS DRAWN
- Massgebend ist der deutsche Text
GERMAN TEXT IS VALID
- Funktionsbestimmende Masse, die mit gekennzeichnet sind, werden im EMPB dokumentiert. Nicht gekennzeichnete Masse werden ebenfalls ausgemessen, aber nicht im EMPB dokumentiert. Abweichungen sind zu korrigieren.
DIMENSIONS MARKED WITH ARE DOCUMENTED IN THE INITIAL SAMPLE INSPECTION REPORT (ISIR). UNMARKED DIMENSIONS ARE ALSO MEASURED BUT NOT DOCUMENTED IN THE ISIR. VARIATIONS MUST BE CORRECTED.
- Verpackung siehe Hirschmann Verpackungshinweis / PACKAGE SEE HIRSCHMANN PACKAGE INSTRUCTION
- Die freigegebenen Meterwaren je X-Ring sind der ZB Buchsengehäusezeichnung zu entnehmen.
THE RELEASED CABLES FOR EACH X-RING CAN BE FOUND ON THE ZB FEMALE HOUSING DRAWING.
807-655-...00

| | | | | |
|-------------------------|---------------|-----------------|-------------------|---|
| 710-675-501 | X-Ring | Schwarz / BLACK | 0,1g | 6mm ² SCC |
| Erz. Nr. PART NUMBER | Index NAME | Farbe COLOUR | Gewicht WEIGHT | Leitungsquerschnitt WIRE CROSS-SECTION |

| | | | | | | | |
|---|----------------------------------|---------------------------|---------------|--|---------------------------------|-----------------------|--|
| 00 | Ersterstellung / Initial edition | | | 12.02.2020 | RHO | | |
| Version | Numb. of | Description of alteration | | | Date | drwn | |
| Test instructions | | | | | | | |
| Crude state | | Material EPDM 70 | Final state | | Gross weight g/pc | | |
| | | | | | Final weight g/pc | | |
| Material-No. | Tolerances | | EN ISO 8015 | | Surface cm ² /pc | Scrap % | |
| | Edges | | DIN ISO 13715 | | | | |
| | Geometric tolerances | | DIN ISO 1101 | | dimensions in millimeters | Scale 5:1 | |
| Drawn | Date 12.02.2020 | Name R.Hoor | | Title HPS40-2 SCC 6mm ² X-Ring | | DIN A3 | |
| Checked | Date 12.02.2020 | Name L.Breuss | | Type | | CDI | |
| Released | Date 12.02.2020 | Name L.Breuss | | Drawing - No. 710-675-...00 | | Sheet 1 of 1 | |
| HIRSCHMANN AUTOMOTIVE | | | | Origin | | Replacement | |
| Oberer Paspelsweg 6-8 A-6830 Rankweil-Brederis | | | | DNR 100000304853 | | | |
| Controlled status available in the system! | | | | Freigegeben | | | |

Plot from: TNATER on 01.12.2020 Doc.Vers. 00 Valid from: 20200212 Valid until: ... Status: Kundenfreigabe

| TABLE OF INDIVIDUAL PARTS BG | | | |
|------------------------------|-----------------------|--------------------------------|-----------|
| POS. | DESCRIPTION: | COLOR: | MATERIAL: |
| 1 | CONTACT HOLDER COD. A | BLACK, SIMILAR RAL 9011 | PBT GF10 |
| | CONTACT HOLDER COD. B | NATURE/WHITE, SIMILAR RAL 9001 | |
| | CONTACT HOLDER COD. C | BLUE, SIMILAR RAL 5012 | |
| | CONTACT HOLDER COD. D | PURPLE, SIMILAR RAL 4004 | |
| 2 | SECONDARY LOCK | RED, SIMILAR RAL 3024 | PA66 GF35 |

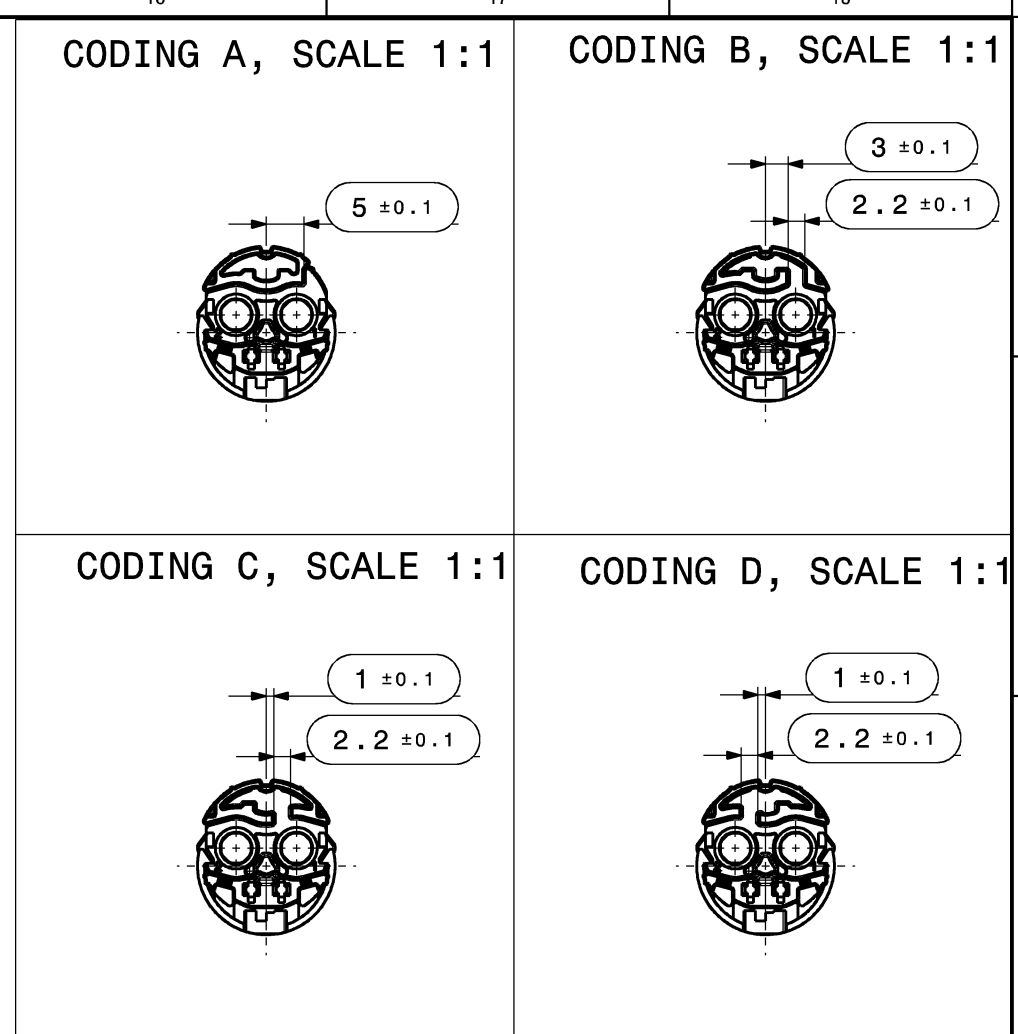


TOLERANCES FOR UNTOLERATED DIMENSIONS:

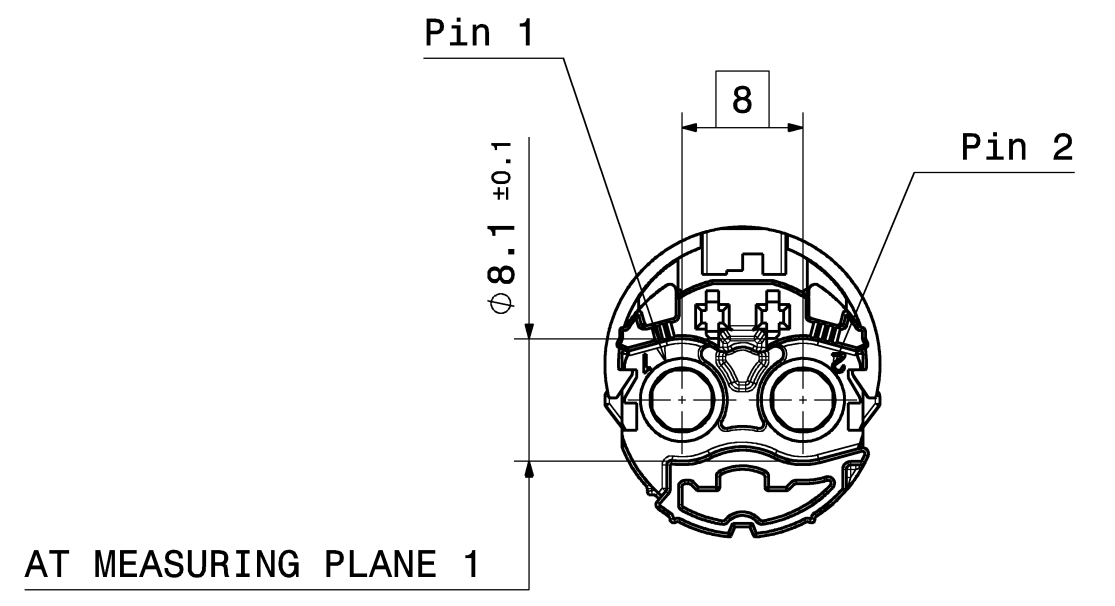
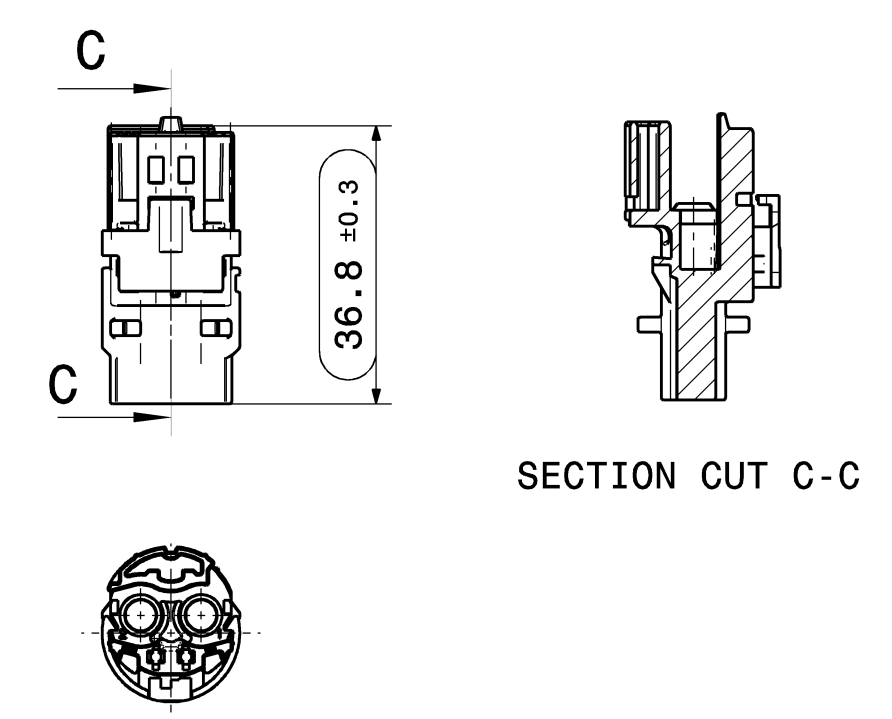
- ANGLE-DIMENSIONS (IN °)
- TOLERANCE FOR ALL ANGLE-DIMENSIONS: ±2°
- RADII : (IN mm)
- DISTANCE-DIMENSIONS: DIN 2768-nH
- GENERAL TOLERANCE FOR SYMMETRY: ±0.2

NOTES:

- CODING A DRAWN
- UNDIMENSIONED RADII R0.3 +/-0.1mm
- DIMENSIONS WITH ARE DOCUMENTED IN THE INITIAL SAMPLE INSPECTION REPORT (ISIR).



Index 541/542/543/544
REMAINING DIMENSIONS SEE
INDEX 809-365-51X

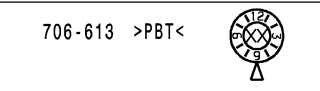
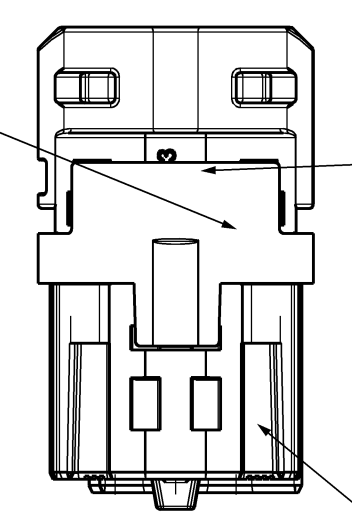


DESCRIPTION OF SINGLE PARTS INSIDE CONTACT HOLDER [1] AND SECONDARY LOCK [2]

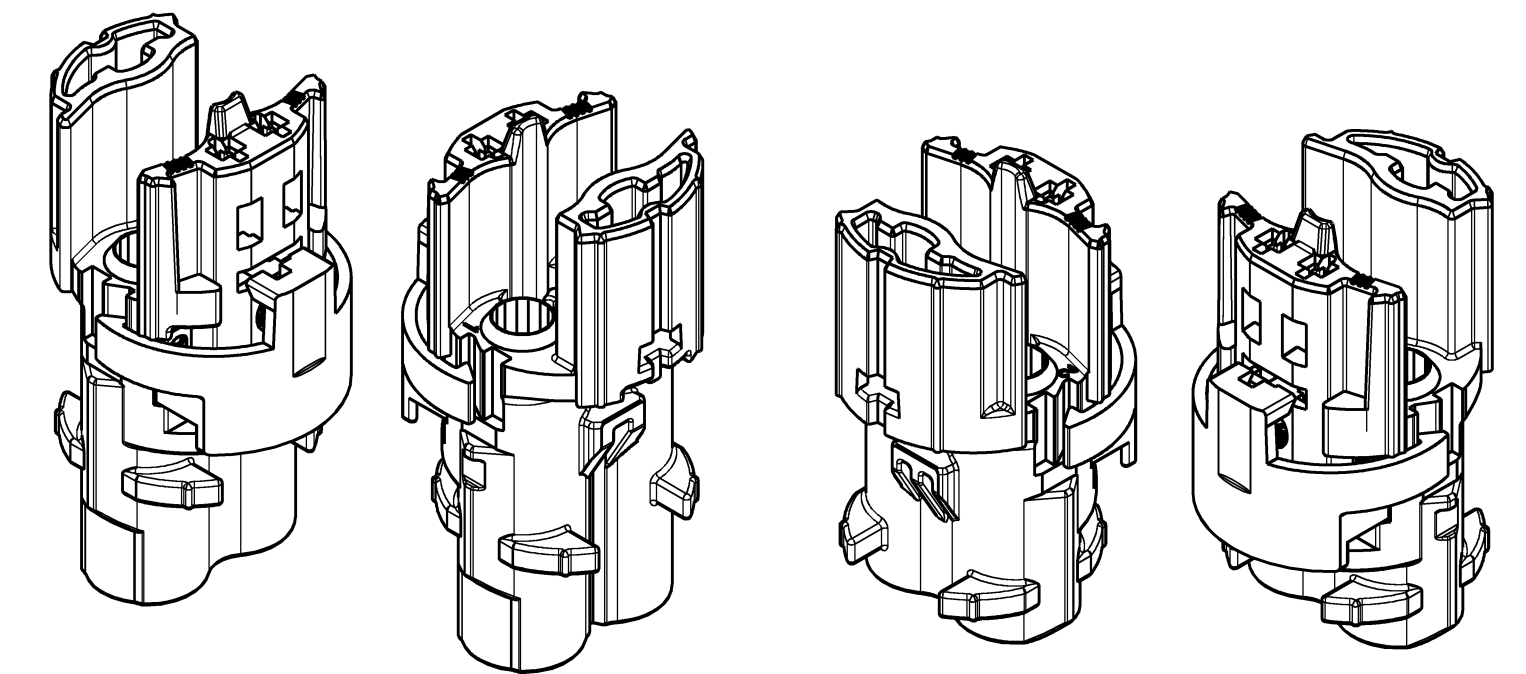
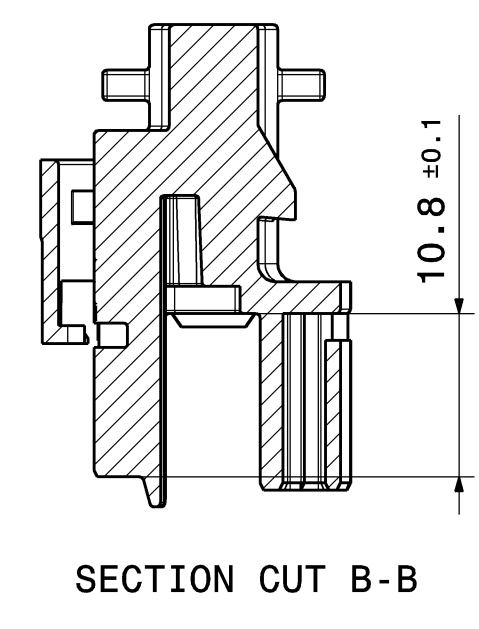
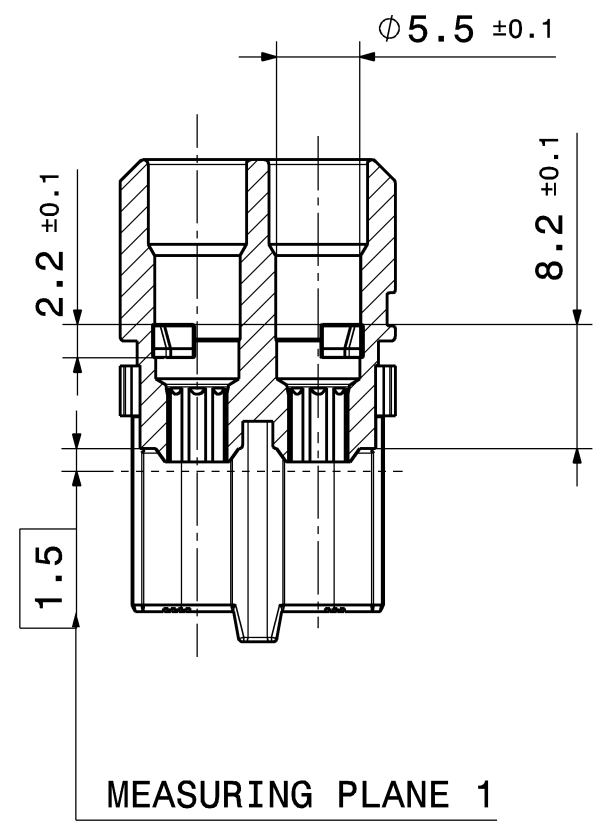
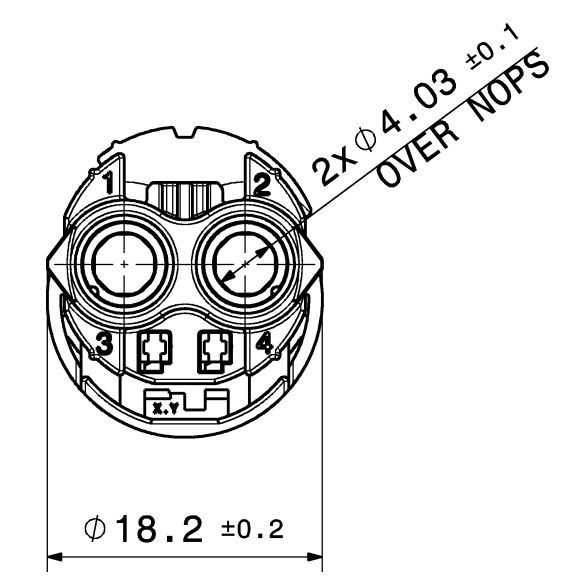
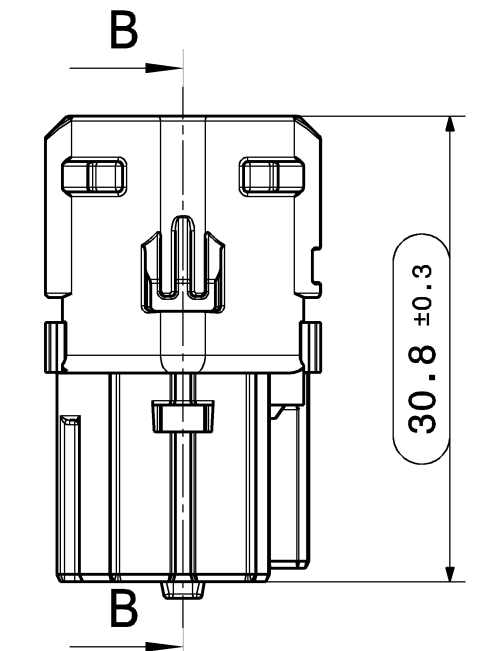
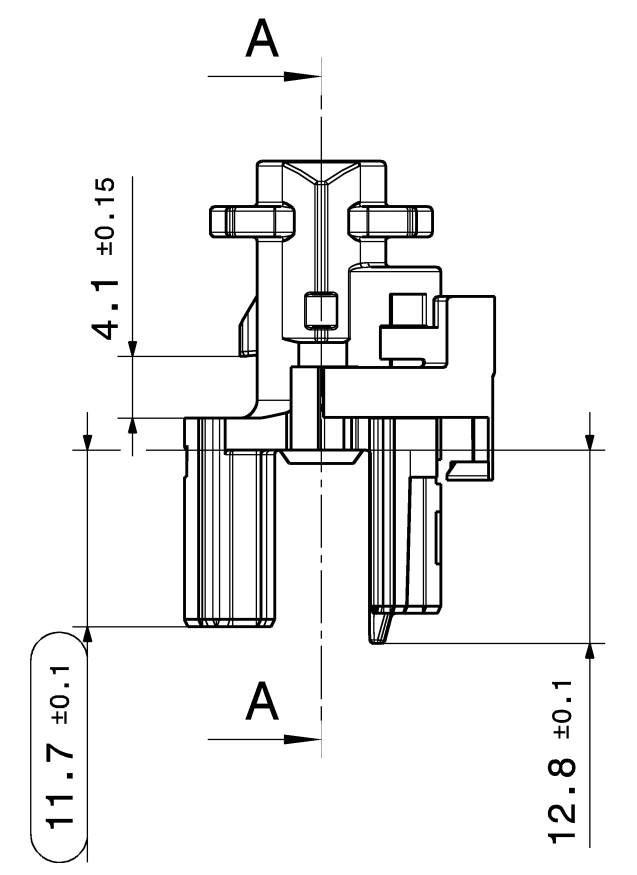
- CAVITY NUMBER
- HA SINGLE PART REV. (ONLY [1])

DESCRIPTION OF SINGLE PART (CONTACT HOLDER) [1]

- HIRSCHMANN NUMBER SINGLE PART
- RECESSED
- DATE M3
- RECESSED - RAISED
- MATERIAL DESCRIPTION
- RECESSED



[1] CONTACT HOLDER



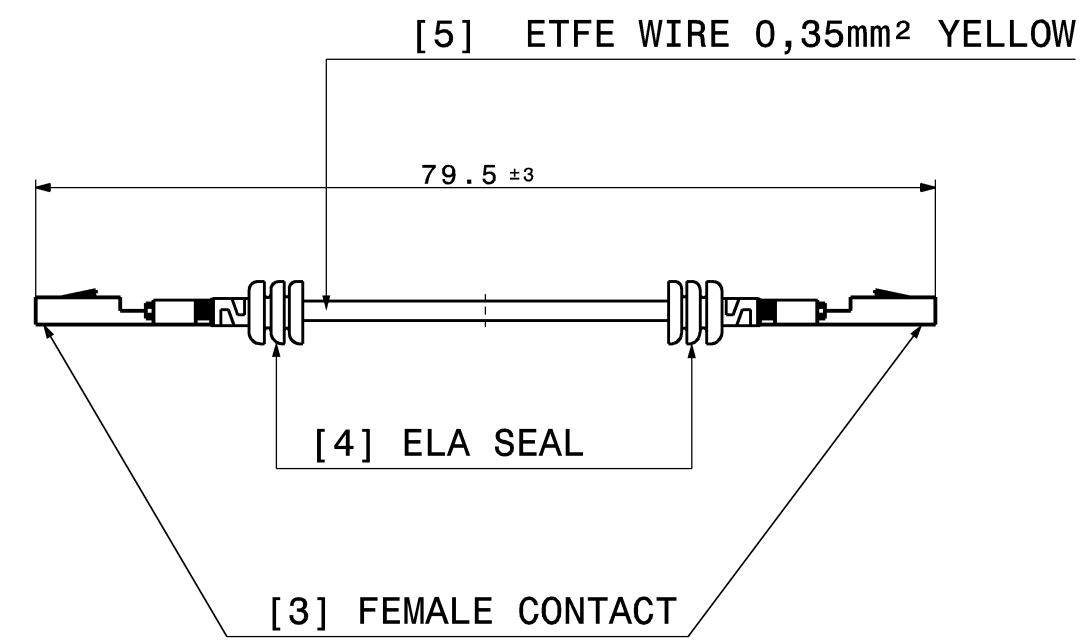
| ORDER NO. | TITLE | CODING | WEIGHT | HA REV. |
|-------------|---------------------------------|--------|--------|---------|
| 809-365-544 | HPS IN-LINE CONTACT CARRIER SCC | D | 4,7 g | A |
| 809-365-543 | | C | 4,7 g | A |
| 809-365-542 | | B | 4,7 g | A |
| 809-365-541 | | A | 4,7 g | A |
| 809-365-514 | HPS IN-LINE CONTACT CARRIER MCC | D | 4,2 g | A |
| 809-365-513 | | C | 4,2 g | A |
| 809-365-512 | | B | 4,2 g | A |
| 809-365-511 | | A | 4,2 g | A |

| | | | |
|-----------------------------|----------------------------------|---|---|
| 00 | Ersterstellung / Initial edition | 11.01.2022 | PGR |
| Version | Sub. # | Description of alteration | Date |
| Test instructions | | | |
| Crude state | Material | Final state | Gross weight g/pc |
| | | | Final weight g/pc |
| Material-Nr. / No. | Tolerances | EN ISO 8015 | Surface cm²/pc |
| | Edges | DIN ISO 13715 | Scrap |
| | Geometric tolerances | DIN ISO 1101 | Scale 2:1 |
| Drawn | Date | Name | Dimensions specially checked for acceptance |
| Checked | 17.02.2022 | A.Starz | |
| Released | 17.02.2022 | A.Starz | |
| HIRSCHMANN AUTOMOTIVE | | Title HPS IN-LINE CONNECTOR CONTACT CARRIER | |
| Drawing - No. 809-365-...00 | | DIN A1 | |
| Origin | | Replacement | |
| DWG 100000416259 | | Sheet 1 of 1 | |

This material contains information protected by copyright. Any reproduction or translation into another language without the prior written consent of Hirschmann Automotive is prohibited.

Pic from: TMAITER on 17.02.2022 Doc.Vers. 00 Valid from: 20220117 Valid until: ... Status: Freigegeben

SHORT CIRCUIT BAR



IDENTIFICATION OF SINGLE PART [1]:
 - MATERIAL RAISED
 - HIRSCHMANN NUMBER OF SINGLE PART RAISED
 - MOLD CAVITY NUMBER RAISED
 >PA< 706-886 Y.X

- NOTES:
 1. UNDIMENSIONED RADII R0.3 +/-0.1mm
 2. DIMENSIONS MARKED WITH \varnothing ARE DOCUMENTED IN THE INITIAL SAMPLE INSPECTION REPORT (ISIR).
 3. MAX. 30% RECLAIM ACCEPTABLE

±0.2 ±0.2
 MAX. SPLIT LINE ±0.1

TOLERANCES FOR UNTOLERATED DIMENSIONS:
 1. ANGLE-DIMENSIONS (IN °)
 TOLERANCE FOR ALL ANGLE-DIMENSIONS: ±2°
 2. RADII : (IN mm)

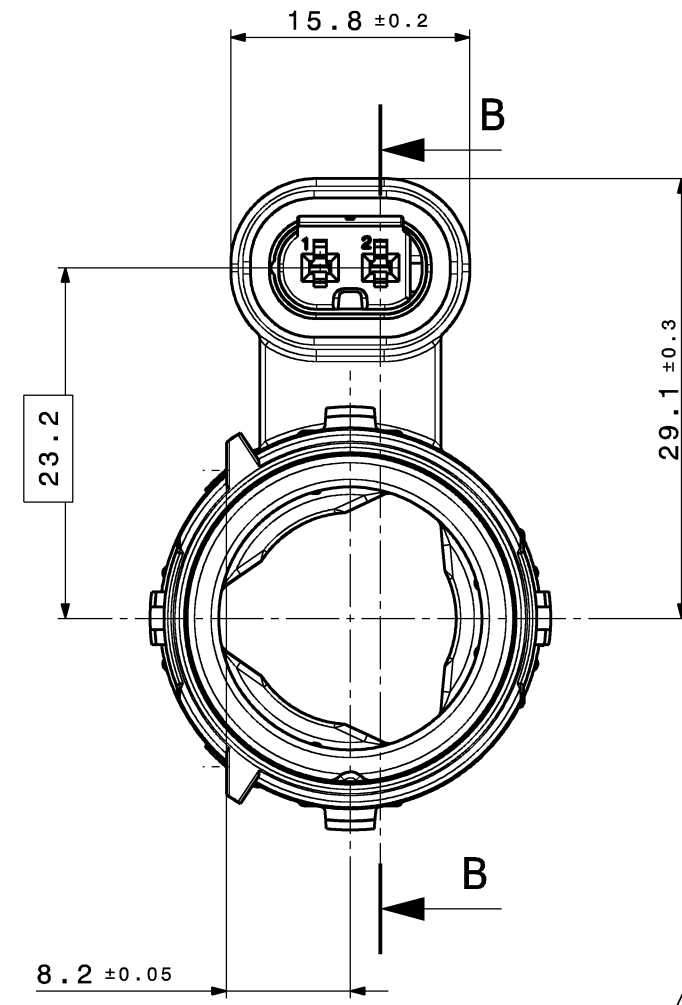
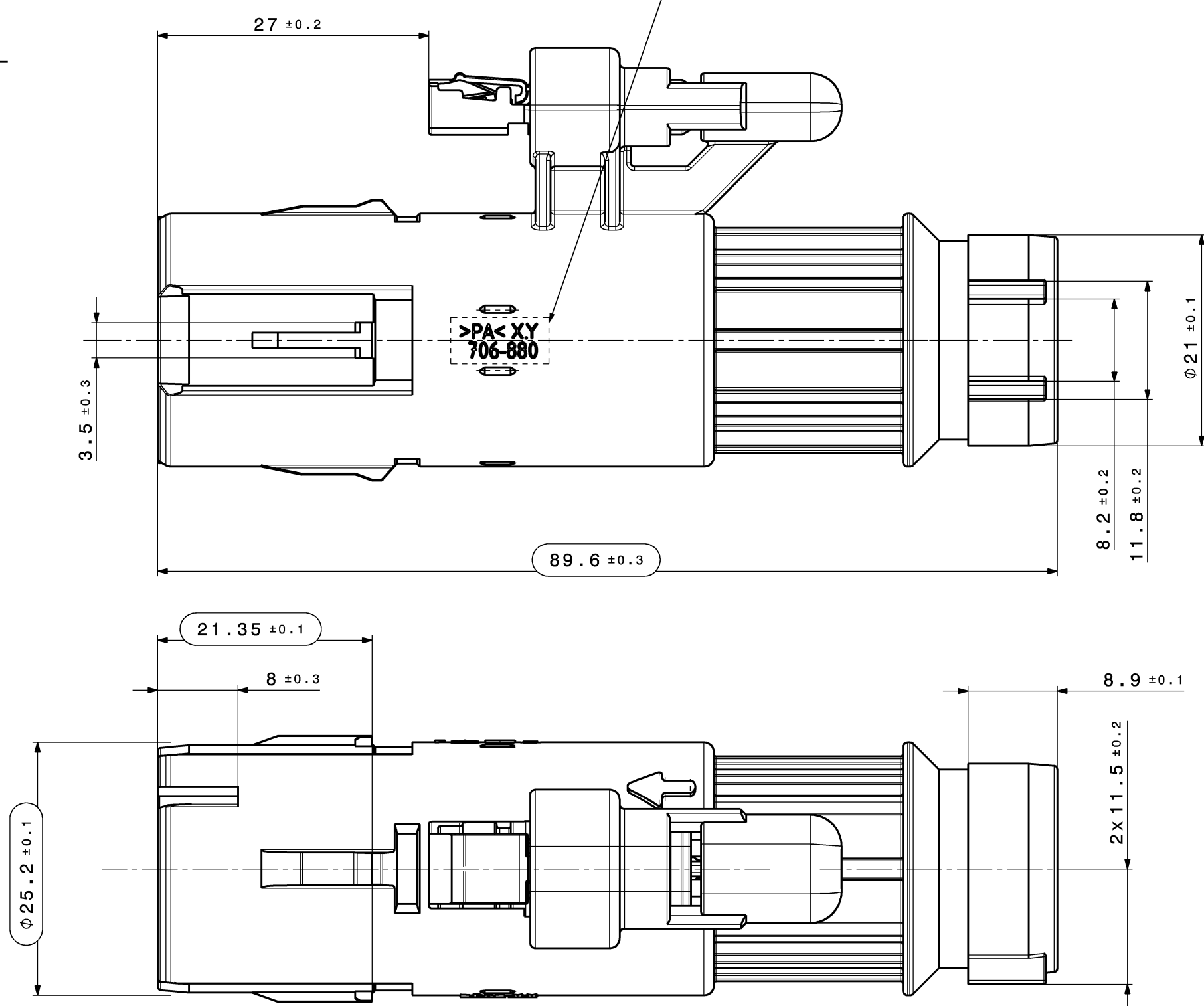
| | | | | | | |
|----|------|------|------|-------|-------|-------|
| TO | 1 | 1-3 | 3-10 | 10-20 | 20-30 | 30-50 |
| | ±0.2 | ±0.3 | ±0.4 | ±0.5 | ±1 | ±2 |

3. DISTANCE-DIMENSIONS:
 DIN 2768-mH
 4. GENERAL TOLERANCE FOR SYMMETRY: \varnothing 0.2

TABLE OF INDIVIDUAL PARTS TB-PLASTIC HOUSING

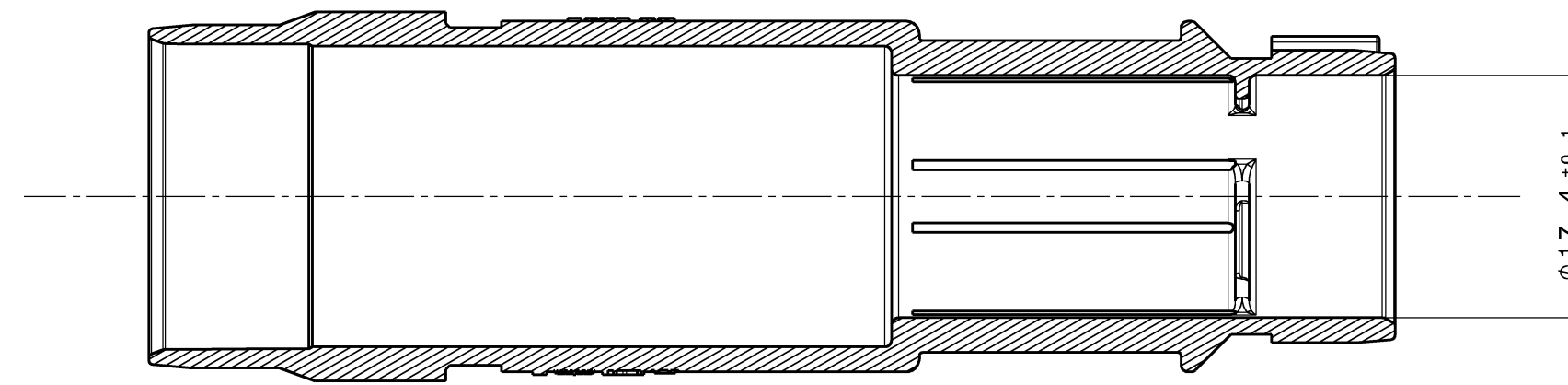
| POS. | DESCRIPTION | COLOR | MATERIAL |
|------|-----------------------------|-------------------------------------|----------------------------------|
| 1 | PLASTIC HOUSING | ORANGE, SIMILAR RAL 2003 | PA66 GF35 |
| 2 | SealStar 1.2 FEMALE HOUSING | NATURE / WHITE, SIMILAR RAL 9001 | PA66 GF25 |
| 2.1 | SealStar 1.2 SEAL | NATURE | LSR 50 Shore |
| 3 | FEMALE CONTACT | MLK: KOSTAL-NO.: 3 21 24 73411 3 | CuSn / Ag |
| | | MCON: TYCO-NO.: 7-1452665-3 | CuSn / Ag |
| 4 | ELA SEAL | MLK: KOSTAL-NO.: 1 08 00 50725 0 | MAIZ YELLOW, SIMILAR RAL 1006 |
| | | MCON: TYCO-NO.: 967 067-2 | YELLOW |
| 5 | WIRE | YELLOW | ETFE |

INDEX 501



[2] SealStar 1.2 FEMALE HOUSING
 [2.1] SealStar 1.2 SEAL
 [3],[4],[5] SHORT CIRCUIT BAR
 [1] PLASTIC HOUSING

SECTION CUT B-B



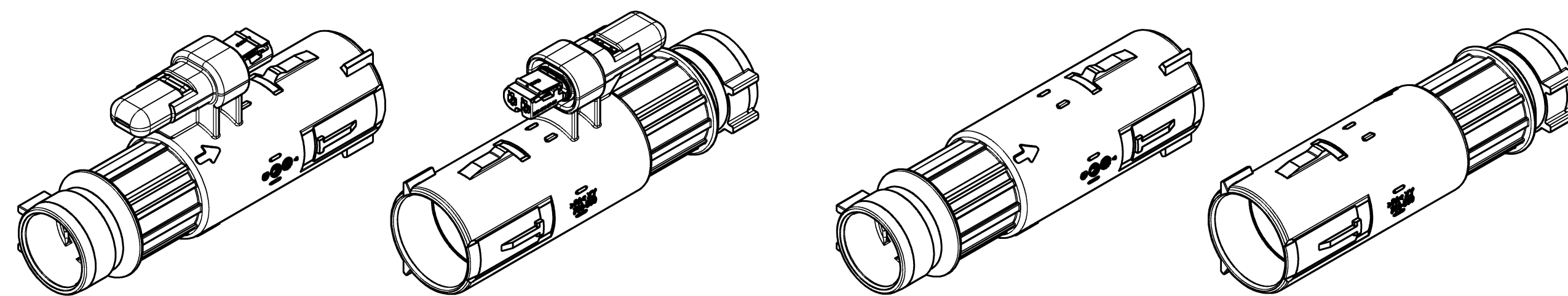
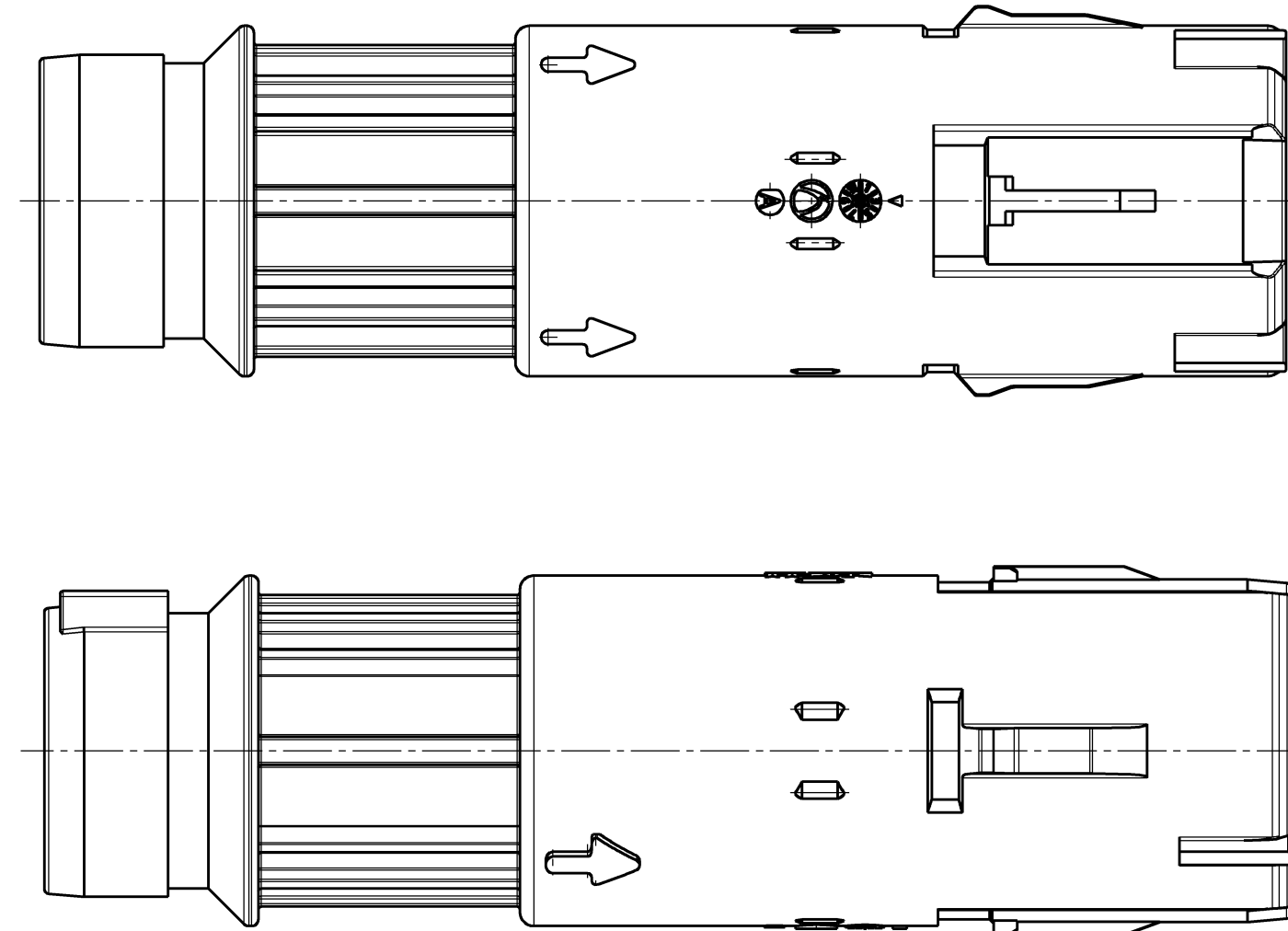
SECTION CUT C-C

IDENTIFICATION OF SINGLE PART [1]:
 - DATE STAMP M3 RAISED
 - HIRSCHMANN LOGO RAISED
 - HIRSCHMANN ASSEMBLY REVISION RAISED



INDEX 502

WITHOUT INTERLOCK CONNECTION
 REMAINING DIMENSIONS SEE INDEX 501



| ORDER NO. | TITLE | HVIL | WEIGHT | HA REV. |
|-------------|---|------|--------|---------|
| 706-880-502 | HPS IN-LINE LOCKING SLEEVE WITHOUT HVIL | NO | 16,65g | A |
| 810-000-501 | HPS IN-LINE LOCKING SLEEVE WITH HVIL | YES | 18,95g | A |

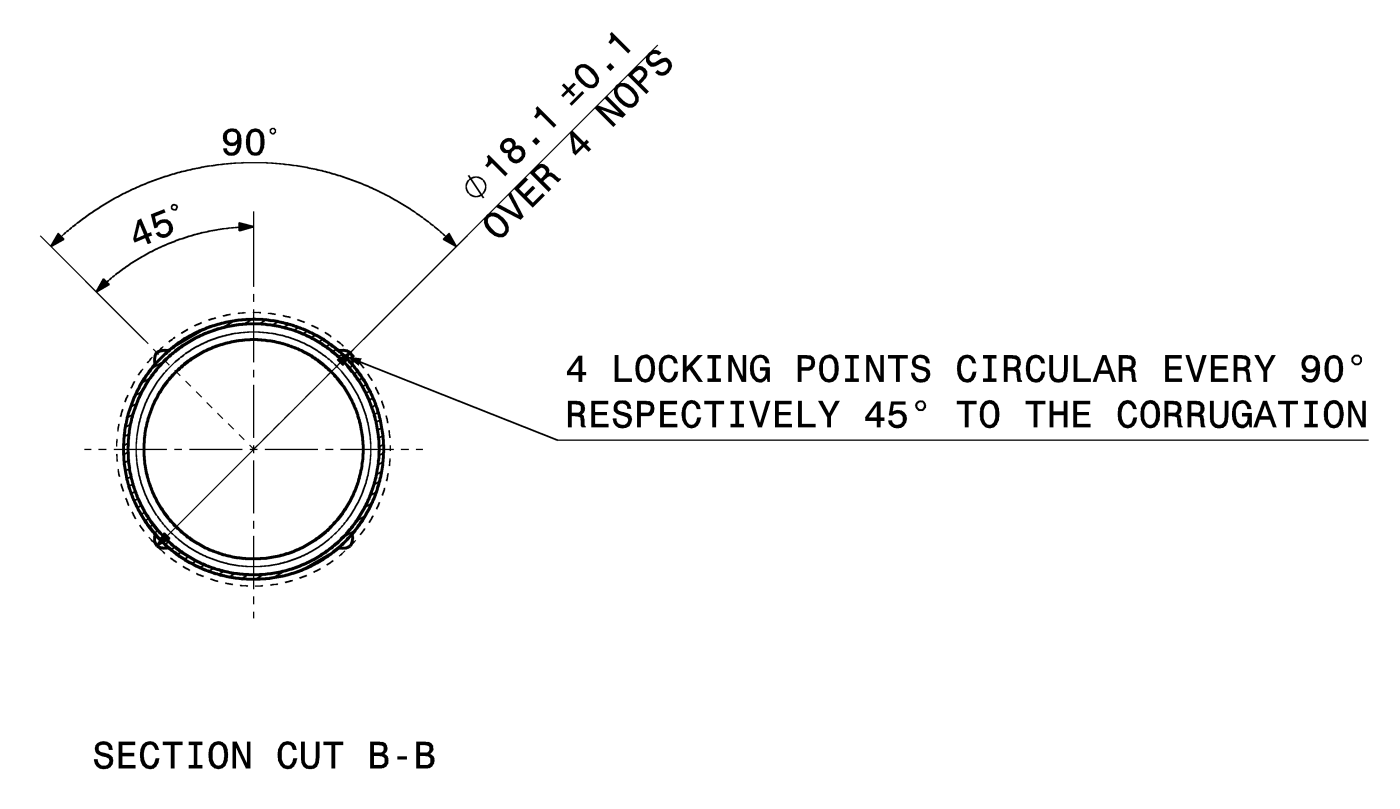
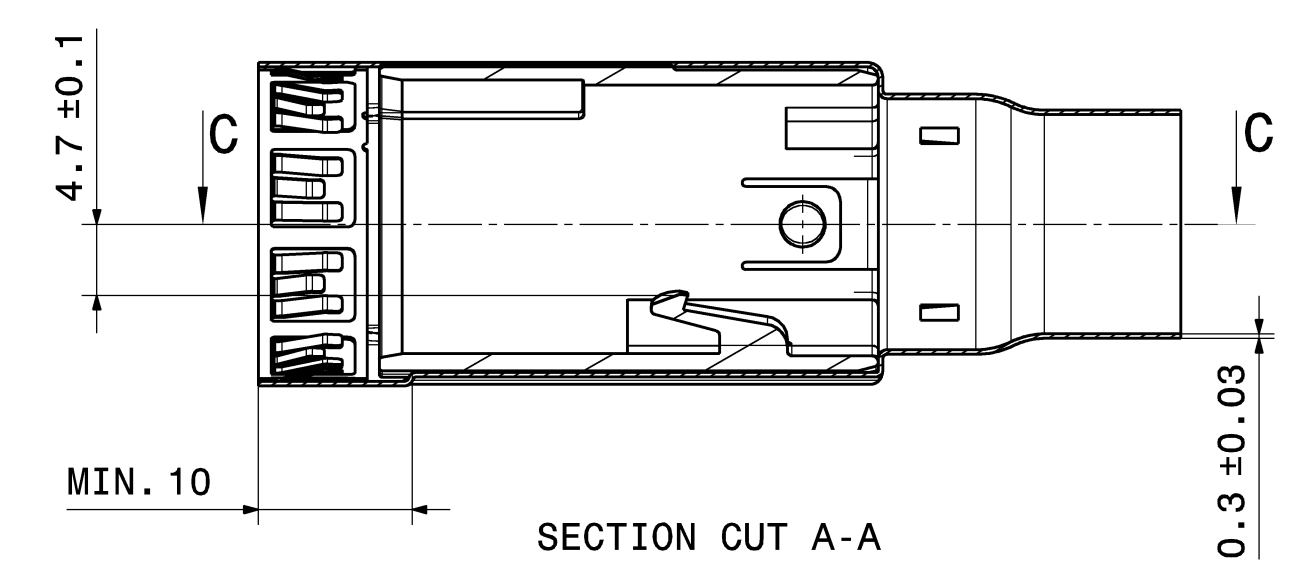
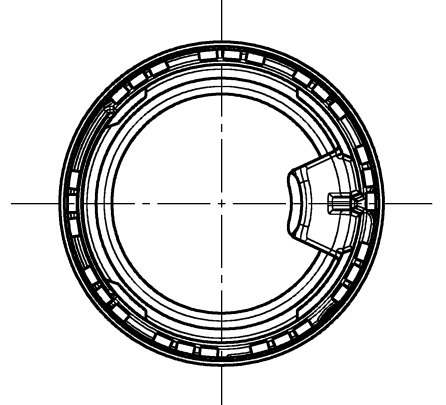
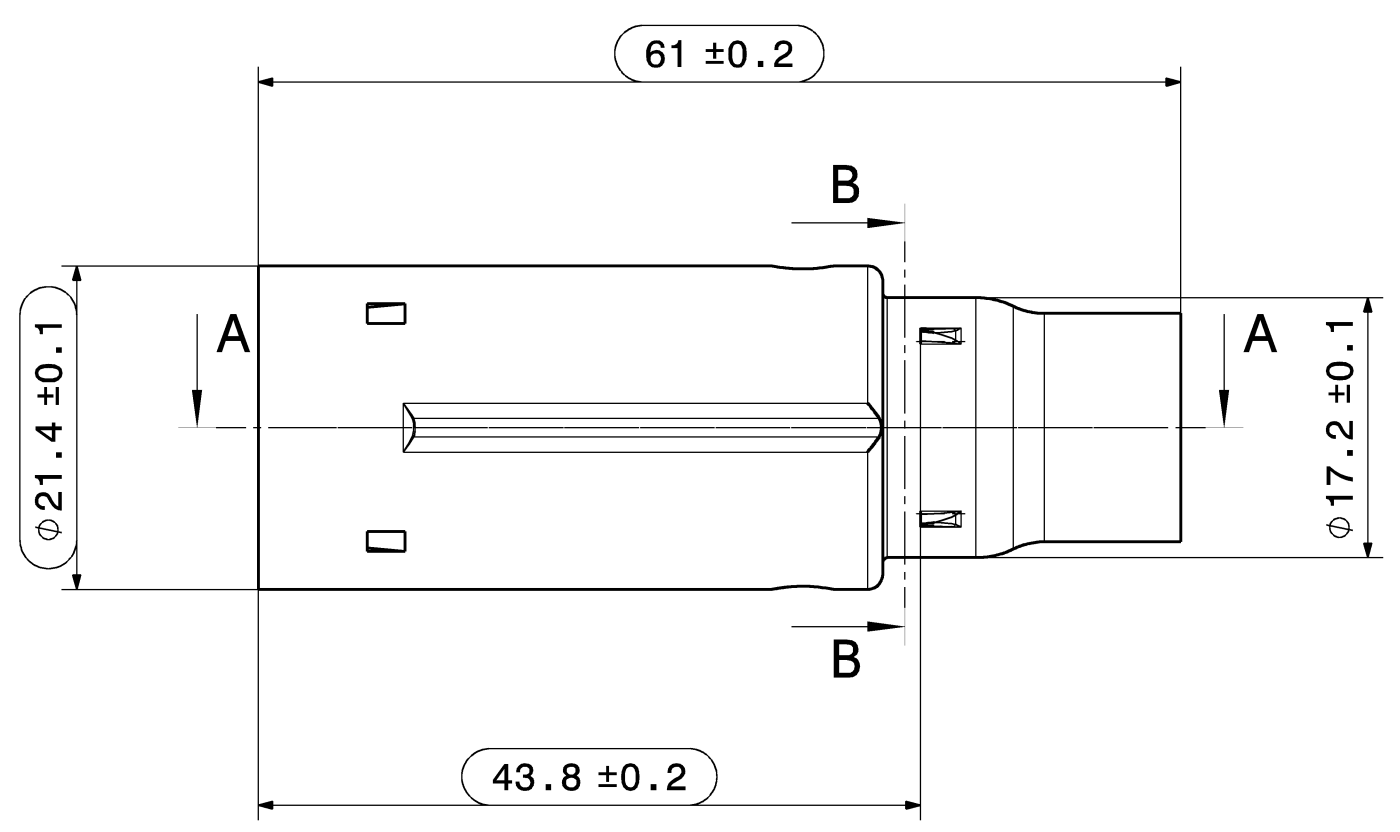
| | | | |
|--|----------------------------------|---------------------------|---|
| 00 | Ersterstellung / Initial edition | 11.01.2022 | PGR |
| Version | Mod. nr. | Description of alteration | Date |
| Test instructions | | | |
| Crude state | Material | Final state | Gross weight g/pc |
| | | | Final weight g/pc |
| Material-Nr. / No. | Tolerances | EN ISO 8015 | Surface cm²/pc |
| | Edges | DIN ISO 13715 | Scale 2:1 |
| | Geometric tolerances | DIN ISO 1101 | GD System Version CATIA V5 |
| Drawn | Date | Name | Dimensions specially checked for acceptance |
| 11.01.2022 | | J. Immler | |
| Checked | 17.02.2022 | A. Starz | Title HPS IN-LINE CONNECTOR LOCKING SLEEVE |
| Released | 17.02.2022 | A. Starz | Type |
| HIRSCHMANN AUTOMOTIVE | | SS | Drawing - No. 810-000-...00 |
| Hersteller: Papalweg 6-8 A-680 Namzell, Steiermark | | Origin | Replacement |
| | | Origin | 100000416210 |

±0.2 ±0.2
MAX. SPLIT LINE ±0.1

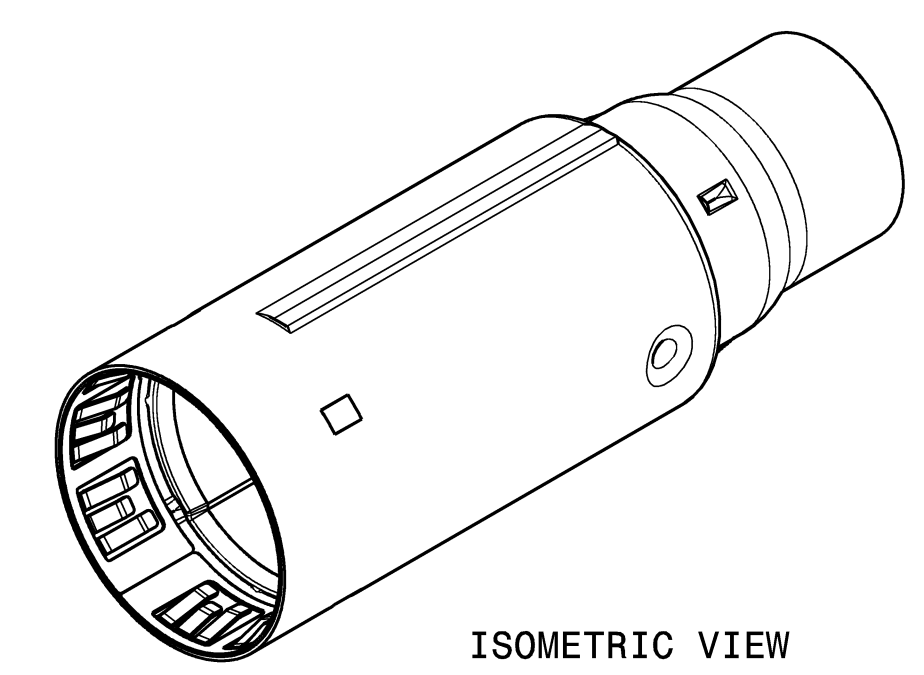
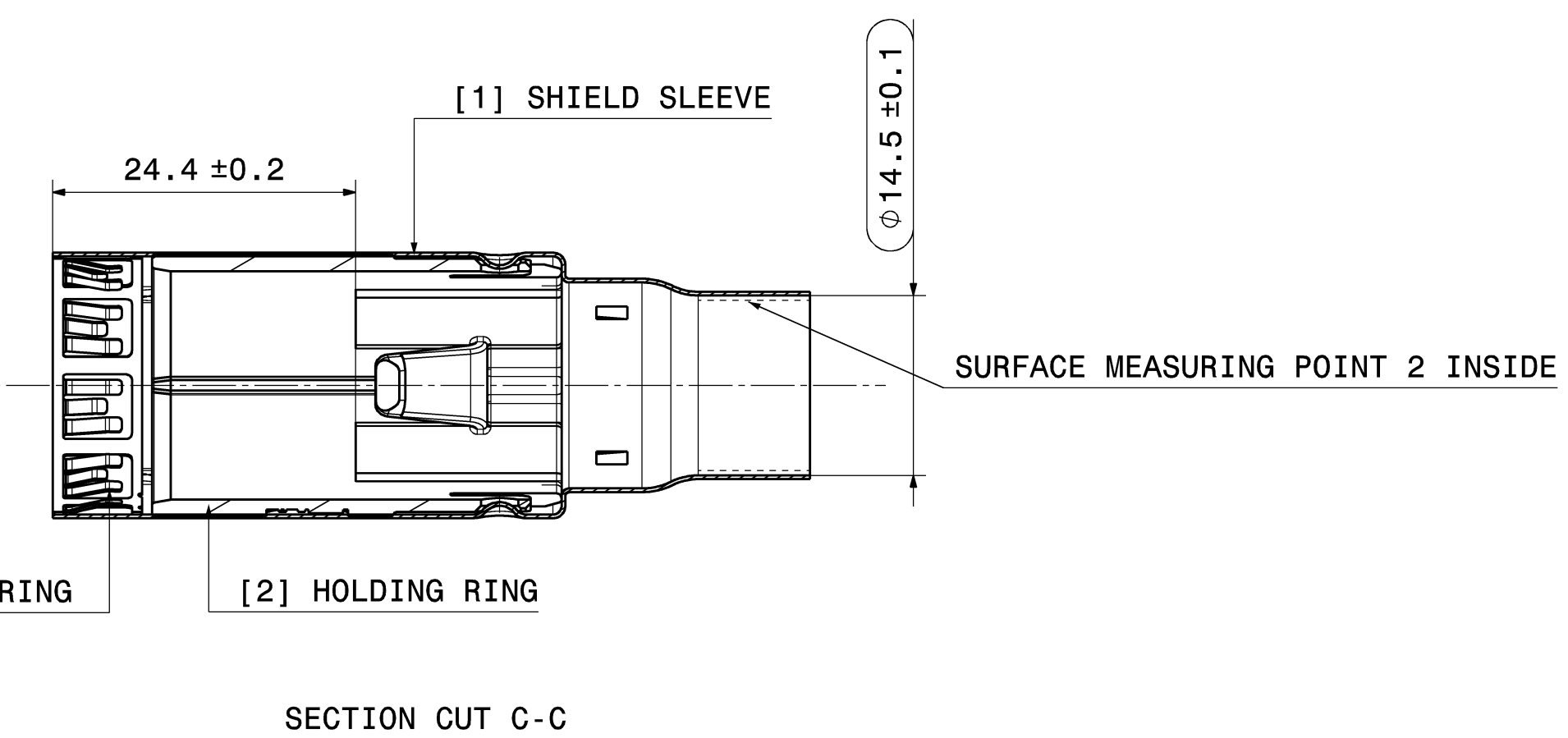
TOLERANCES FOR UNTOLERATED DIMENSIONS:
1. ANGLE-DIMENSIONS (IN °)
TOLERANCE FOR ALL ANGLE-DIMENSIONS: ±2°
2. RADII : (IN mm)
TO 1 | 1-3 | 3-10 | 10-20 | 20-30 | 30-50
±0.2 | ±0.3 | ±0.4 | ±0.5 | ±1 | ±2
3. DISTANCE-DIMENSIONS:
DIN 2768-mH
4. GENERAL TOLERANCE FOR SYMMETRY: ±0.2

NOTES:

- UNDIMENSIONED RADII R0.2mm
- DIMENSIONS WITH  ARE DOCUMENTED IN THE INITIAL SAMPLE INSPECTION REPORT (ISIR).



| TABLE OF INDIVIDUAL PARTS TB | | | |
|------------------------------|---------------|-------------------------|-----------------------|
| POS. | DESCRIPTION | COLOR | MATERIAL / SURFACE |
| 1 | SHIELD SLEEVE | | CuZn28 / Sn |
| 2 | HOLDING RING | BLACK, SIMILAR RAL 9011 | PBT |
| 3 | SHIELD SPRING | | Cu ALLOY / PARTIAL Ag |



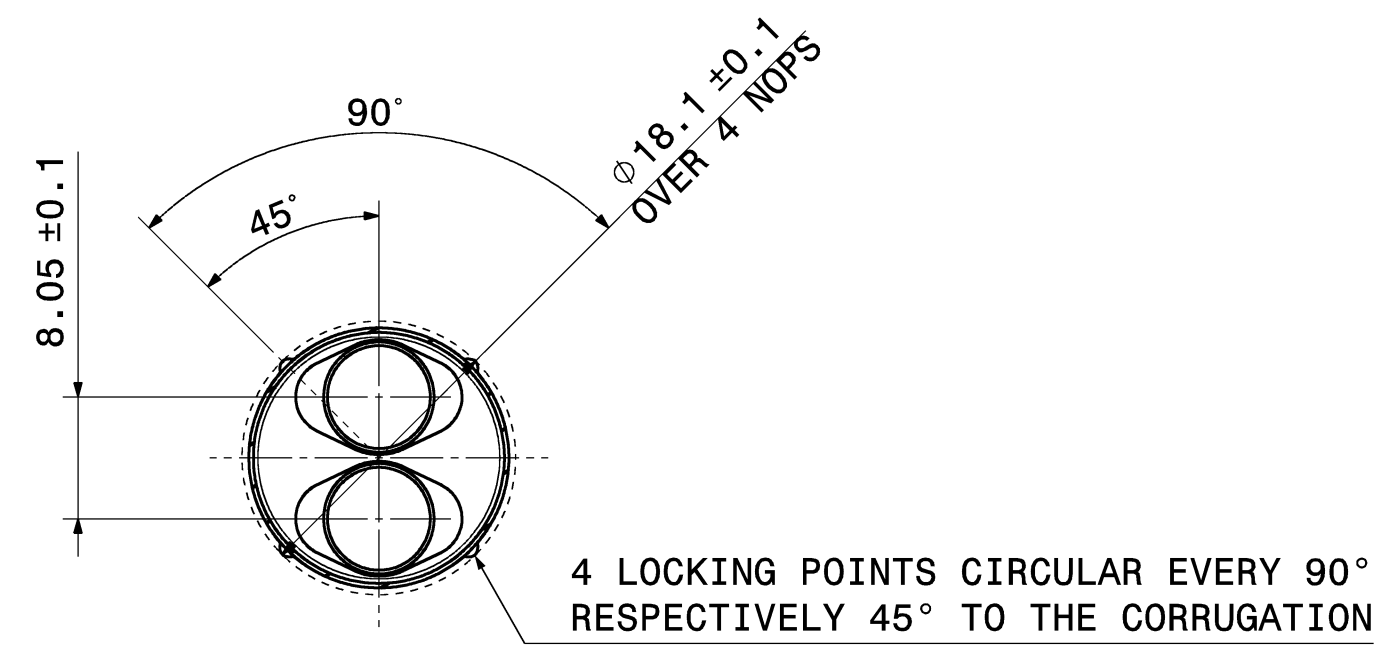
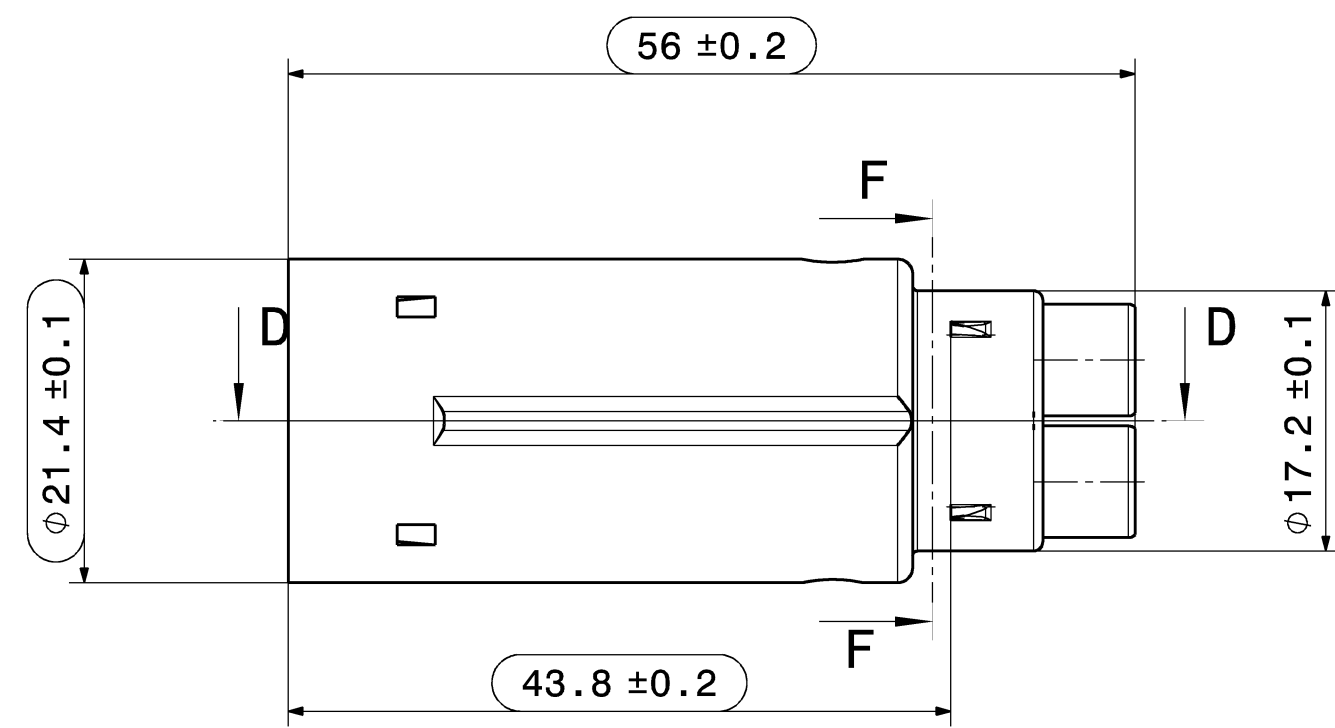
| ORDER NO. | TITLE | WEIGHT | HA REV. |
|-------------|---|--------|---------|
| 810-001-503 | HPS IN-LINE SHIELDING SLEEVE SCC 6mm ² | 14,2g | A |
| 810-001-502 | HPS IN-LINE SHIELDING SLEEVE SCC 4mm ² | 13g | A |
| 810-001-501 | HPS IN-LINE SHIELDING SLEEVE MCC | 13,2g | A |

| | | | |
|-----------------------------|----------------------------------|--|---|
| 00 | Ersterstellung / Initial edition | 11.01.2022 | PGR |
| Version | Sub. of | Description of alteration | Date |
| Test instructions | | | |
| Crude state | Material | Final state | Gross weight g/pc |
| | | | Final weight g/pc |
| Material-Nr. / No. | Tolerances | EN ISO 8015 | Surface |
| | Edges | DIN ISO 13715 | Scale |
| | Geometric tolerances | DIN ISO 1101 | Scale 2:1 |
| Drawn | Date | Name | Dimensions specially checked for acceptance |
| Checked | | | |
| Released | 17.02.2022 | A.Starz | CATIA V5 |
| HIRSCHMANN AUTOMOTIVE | | Title HPS IN-LINE CONNECTOR SHIELDING SLEEVE | |
| Drawing - No. 810-001-...00 | | DIN A1 | |
| Origin | | Replacement | |
| DIN 100000416253 | | Sheet 1 of 2 | |

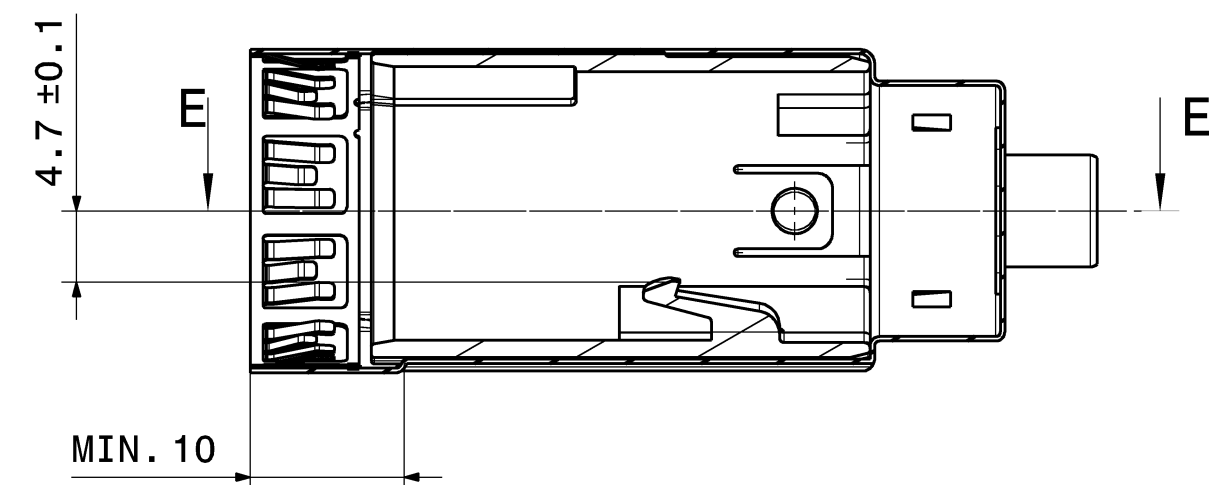
This material contains information protected by copyright. Reproduction or translation into another language without the prior written consent of Hirschmann is prohibited.

Pic from: TMAITER on 17.02.2022 Doc.Vers. 00 Valid from: 20220117 Valid until: ... Status: Freigegeben

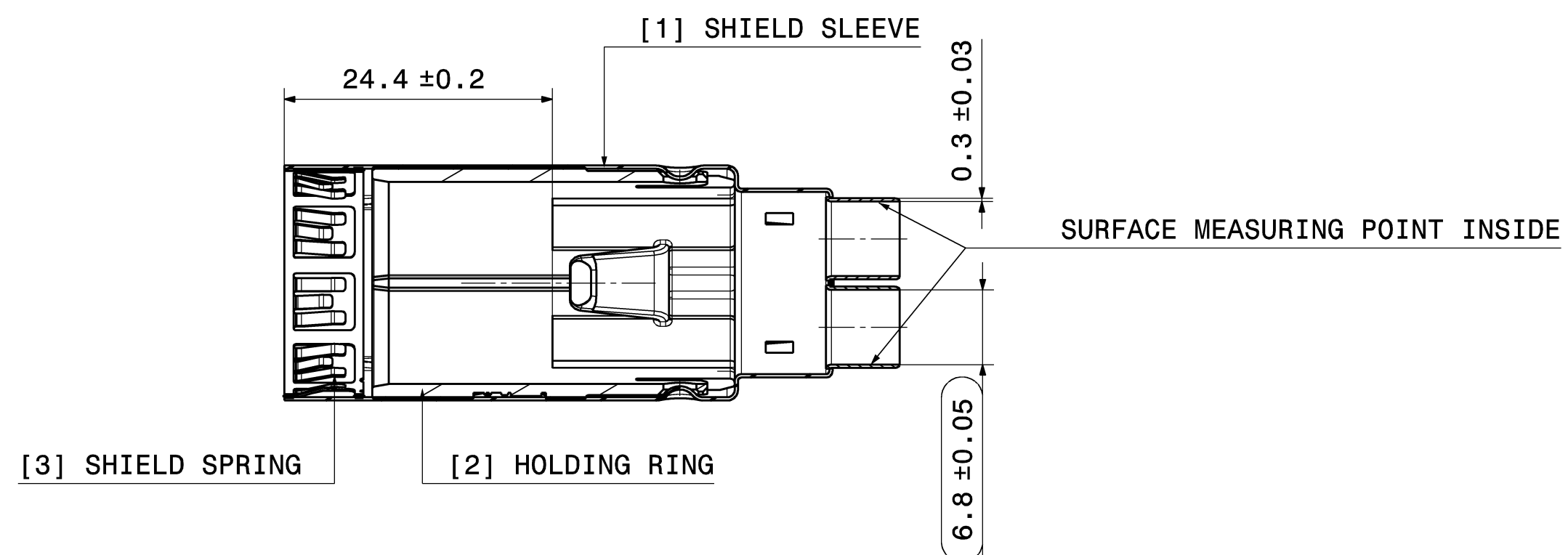
INDEX 502



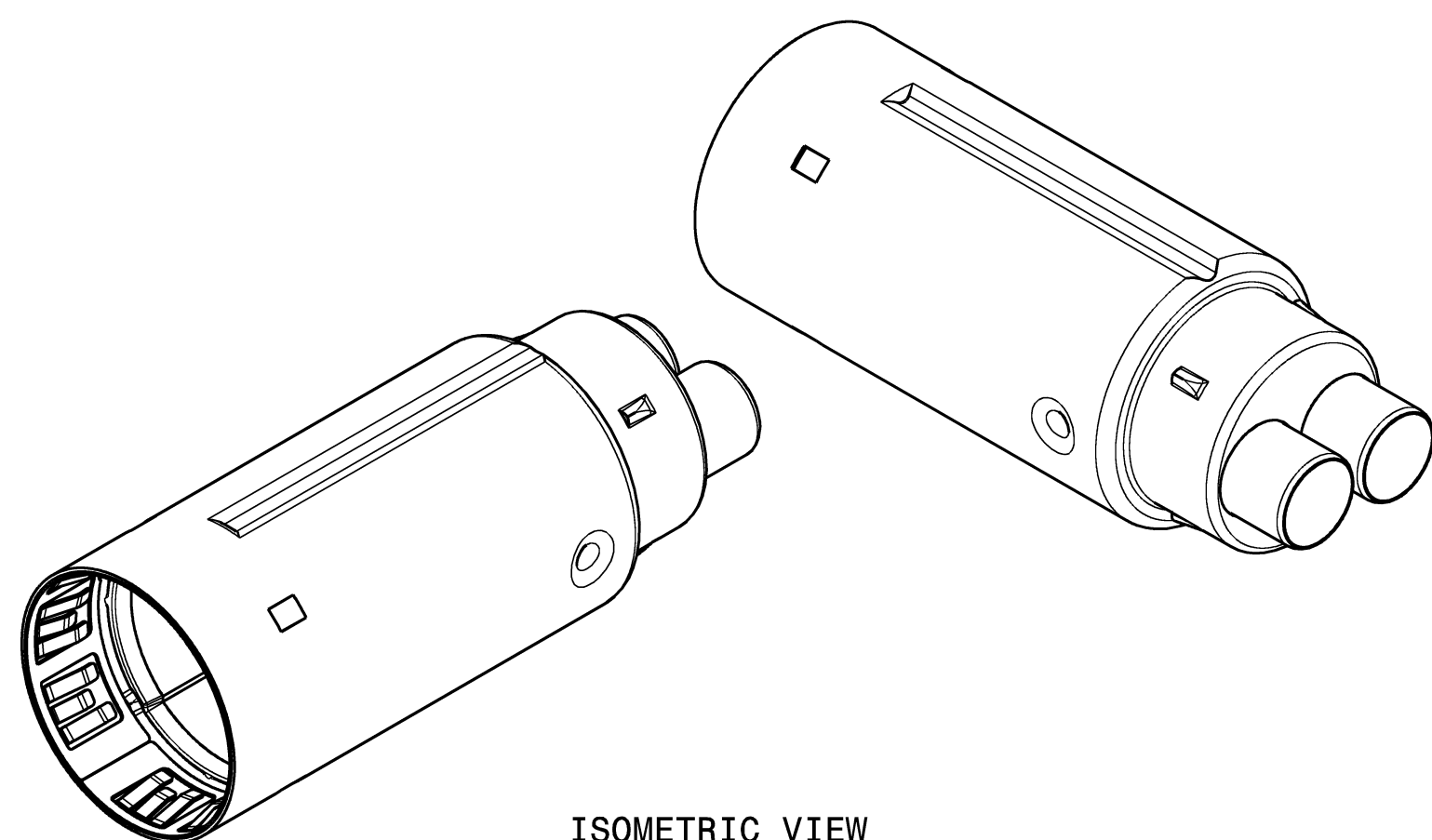
SECTION CUT F-F



SECTION CUT D-D

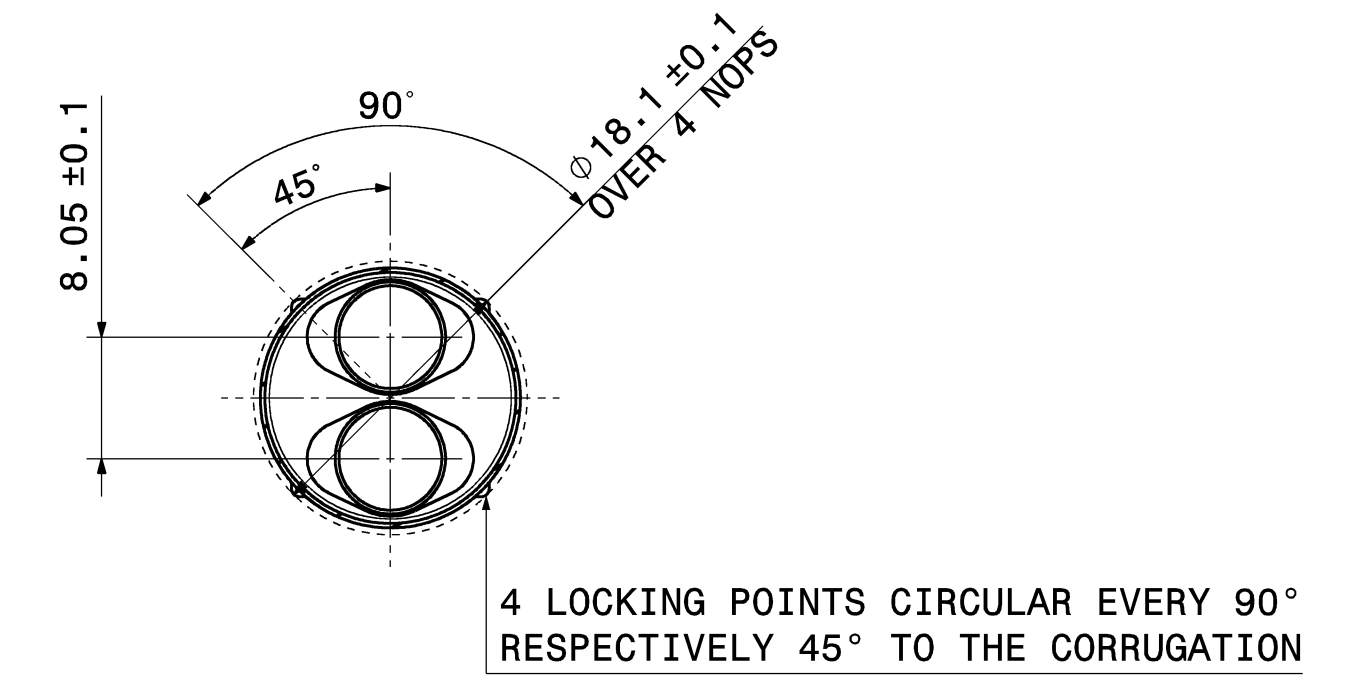
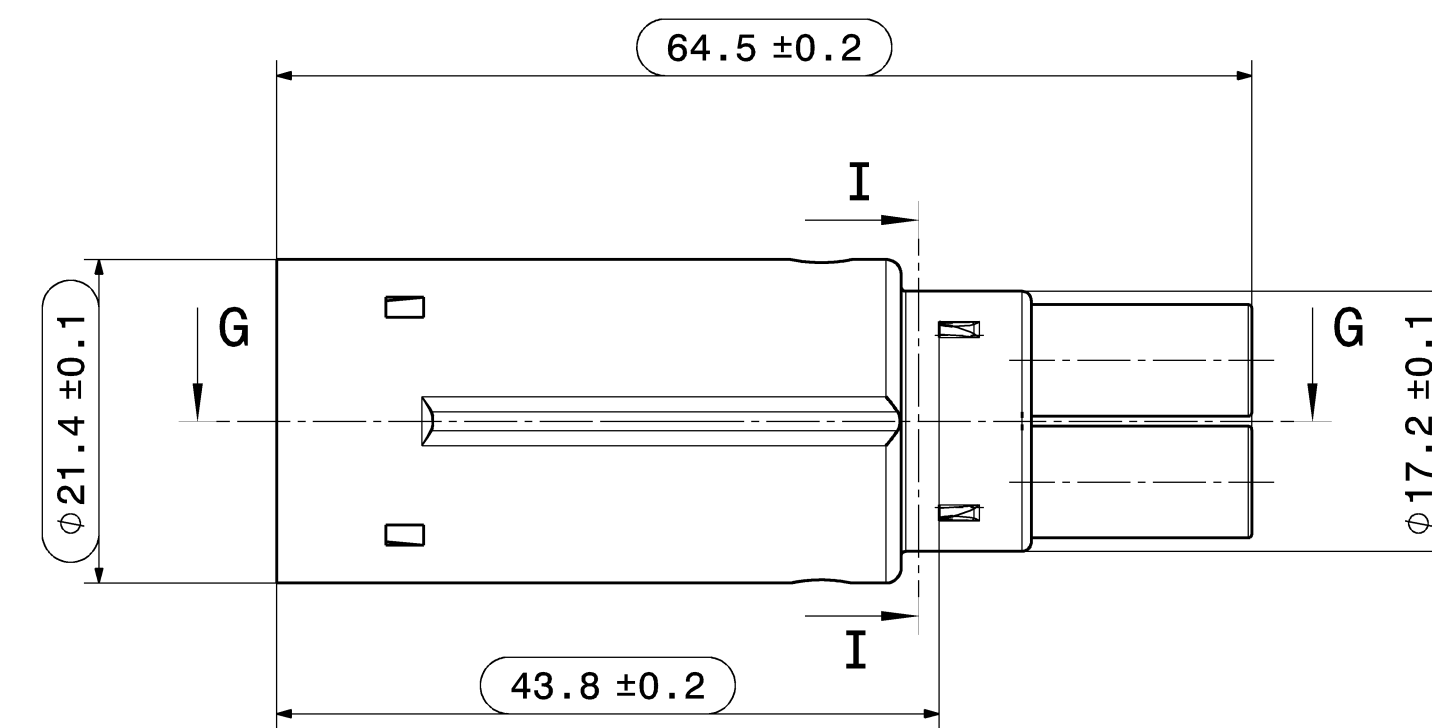


SECTION CUT E-E

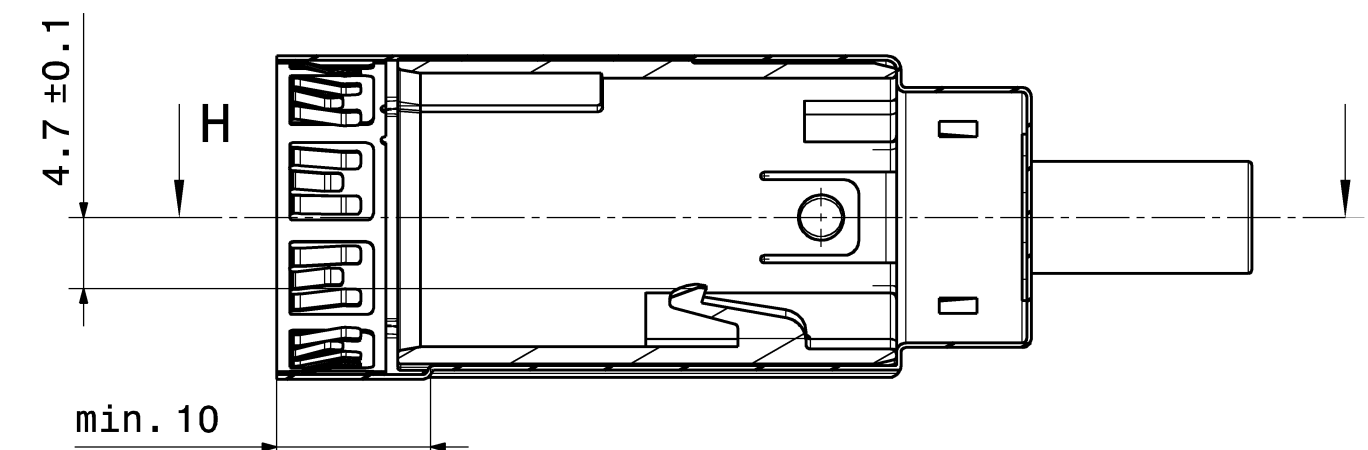


ISOMETRIC VIEW

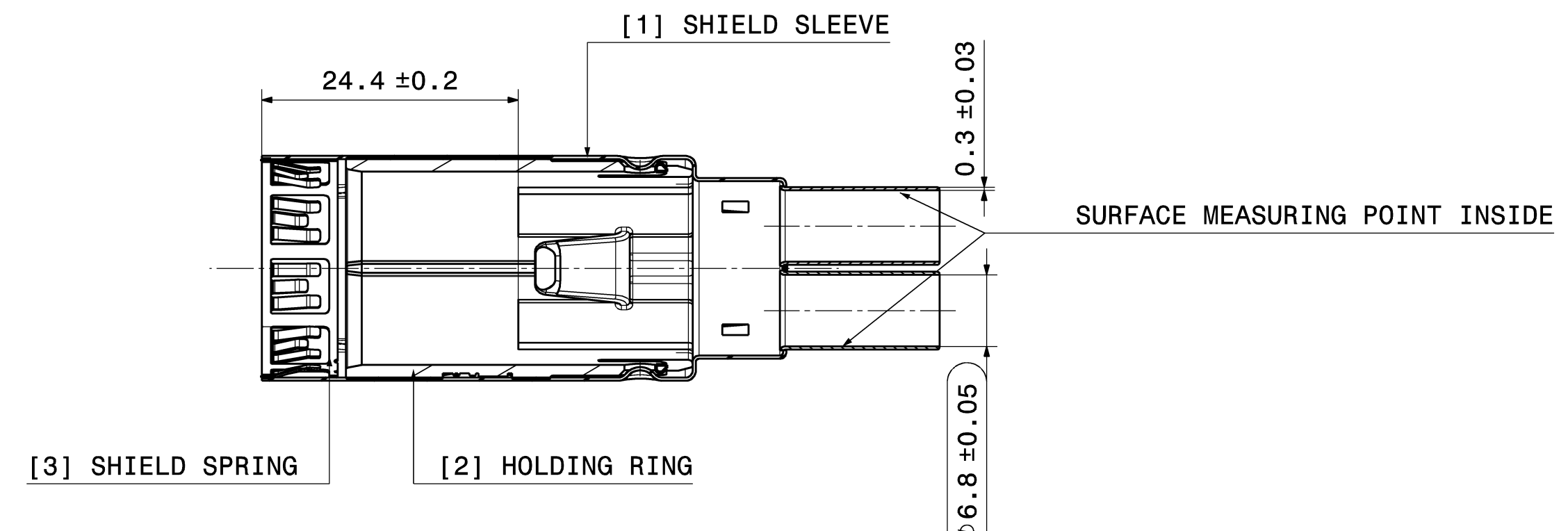
INDEX 503



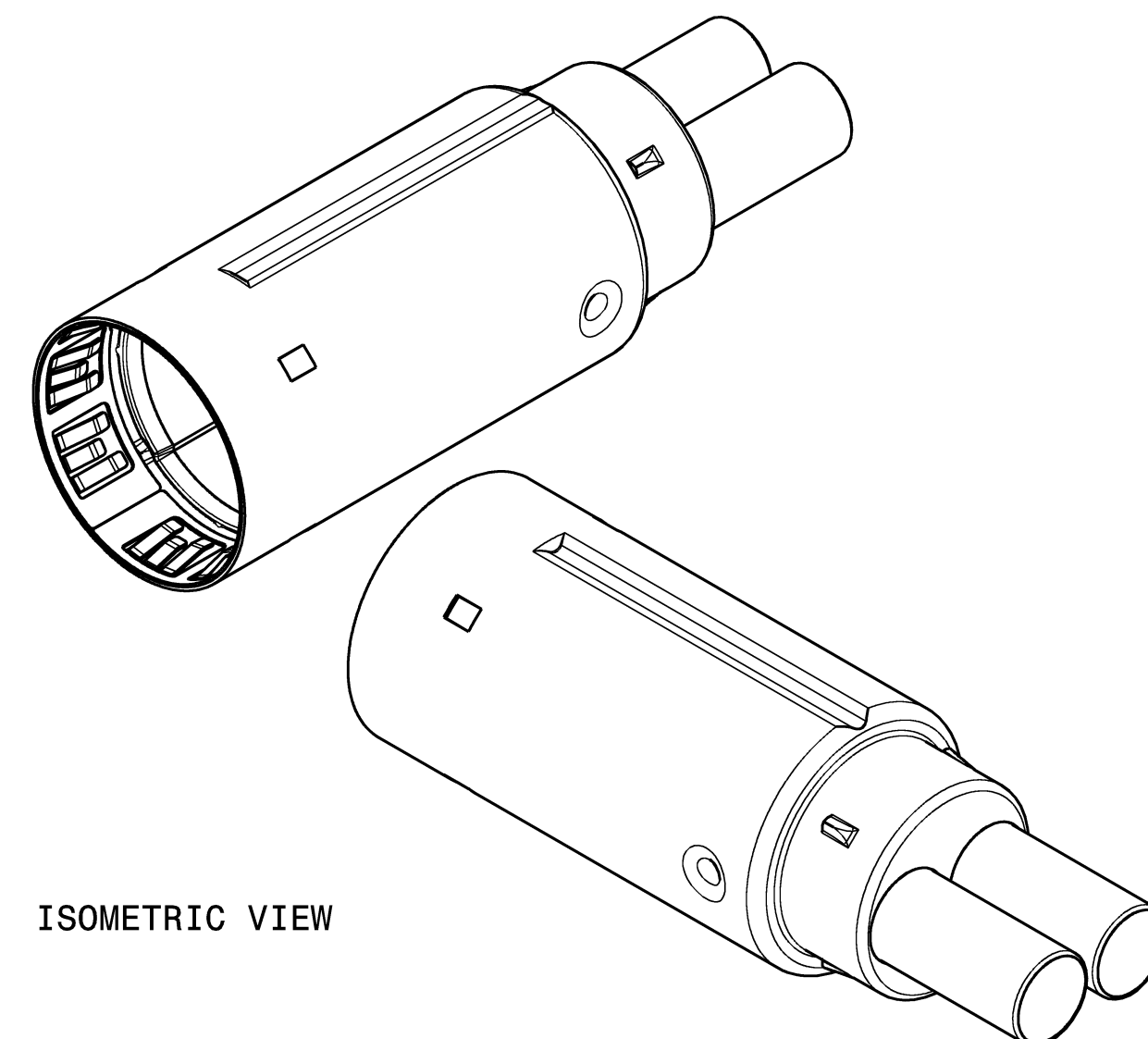
SECTION CUT I-I



SECTION CUT G-G



SECTION CUT H-H



ISOMETRIC VIEW

| | | | |
|--|----------------------------------|---|--|
| 00 | Ersterstellung / Initial edition | 11.01.2022 | PGR |
| Version | Mod. nr. | Description of alteration | Date |
| Test instructions | | | |
| Crude state | Material | Final state | Gross weight g/pc |
| | | | Final weight g/pc |
| Material-Nr. / No. | Tolerances | EN ISO 8015 | Surface cm ² /pc |
| | Edges | DIN ISO 13715 | Scale 2:1 |
| | Geometric tolerances | DIN ISO 1101 | CDI |
| Date | Name | Dimensions specially checked for acceptance | |
| Drawn | 11.01.2022 | J. Immler | Title |
| Checked | 17.02.2022 | A. Starz | HPS IN-LINE CONNECTOR SHIELDING SLEEVE |
| Released | 17.02.2022 | A. Starz | Type |
| HIRSCHMANN AUTOMOTIVE | | SS | Drawing - No. 810-001-...00 |
| Oberer Pappelweg 6-8 | | Origin | Replacement |
| A-680 Hanau/1-Brederla | | DIN | 100000416253 |
| Controlled status available in the system! | | | |

This material contains information protected by copyright. Any reproduction or translation into another language without the prior written consent of Hirschmann is prohibited.

Plot from: T:\MATER on 17.02.2022 Doc.Vers. 00 Valid from: 20220117 Valid until: ... Status: Freigegeben