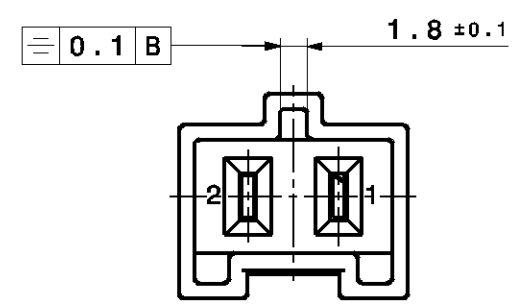
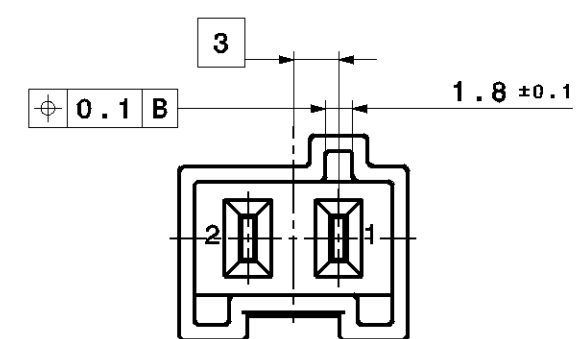


CODING:
SCALE: 2:1

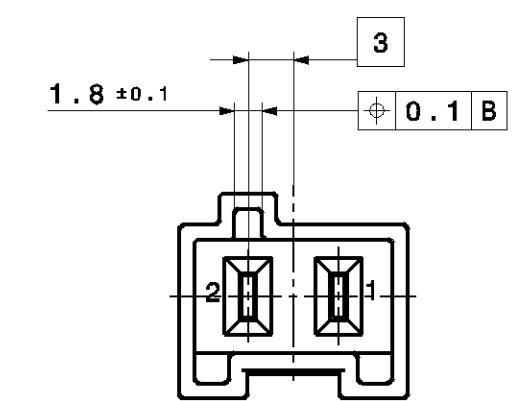
CODING A:



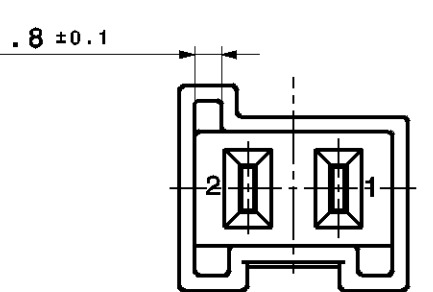
CODING B:



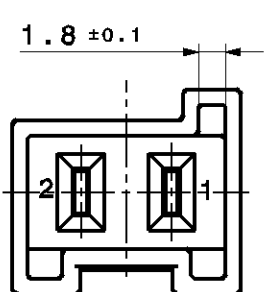
CODING C:



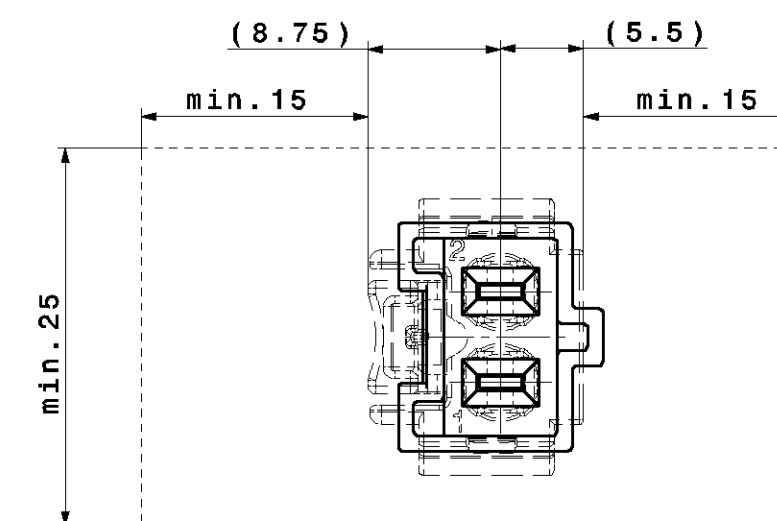
CODING D:



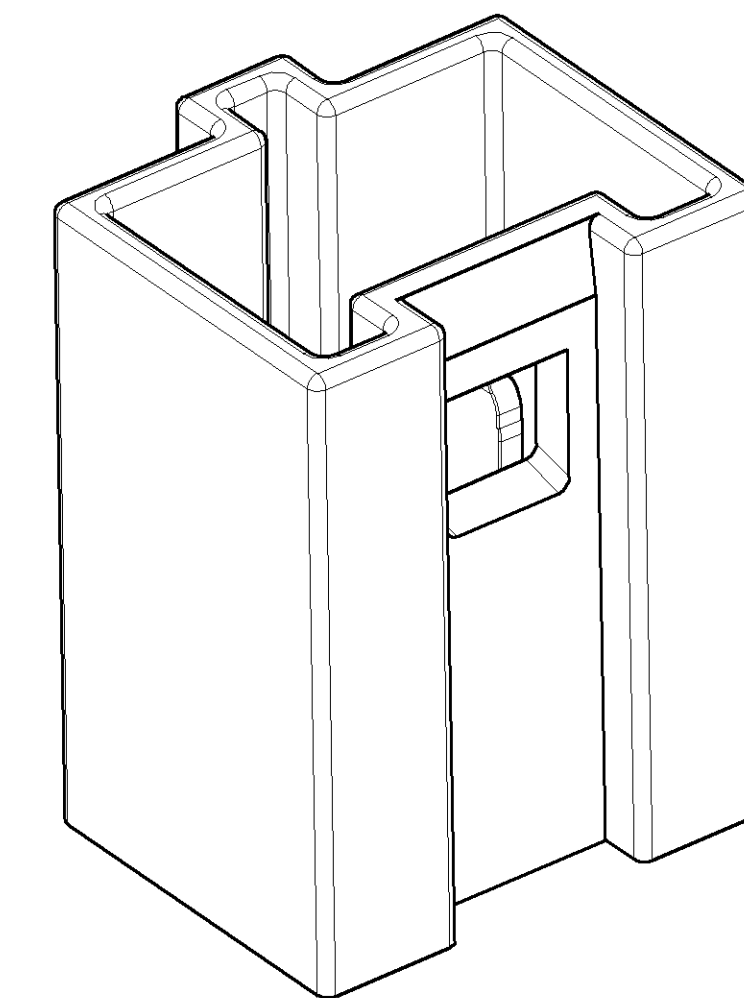
CODING E:



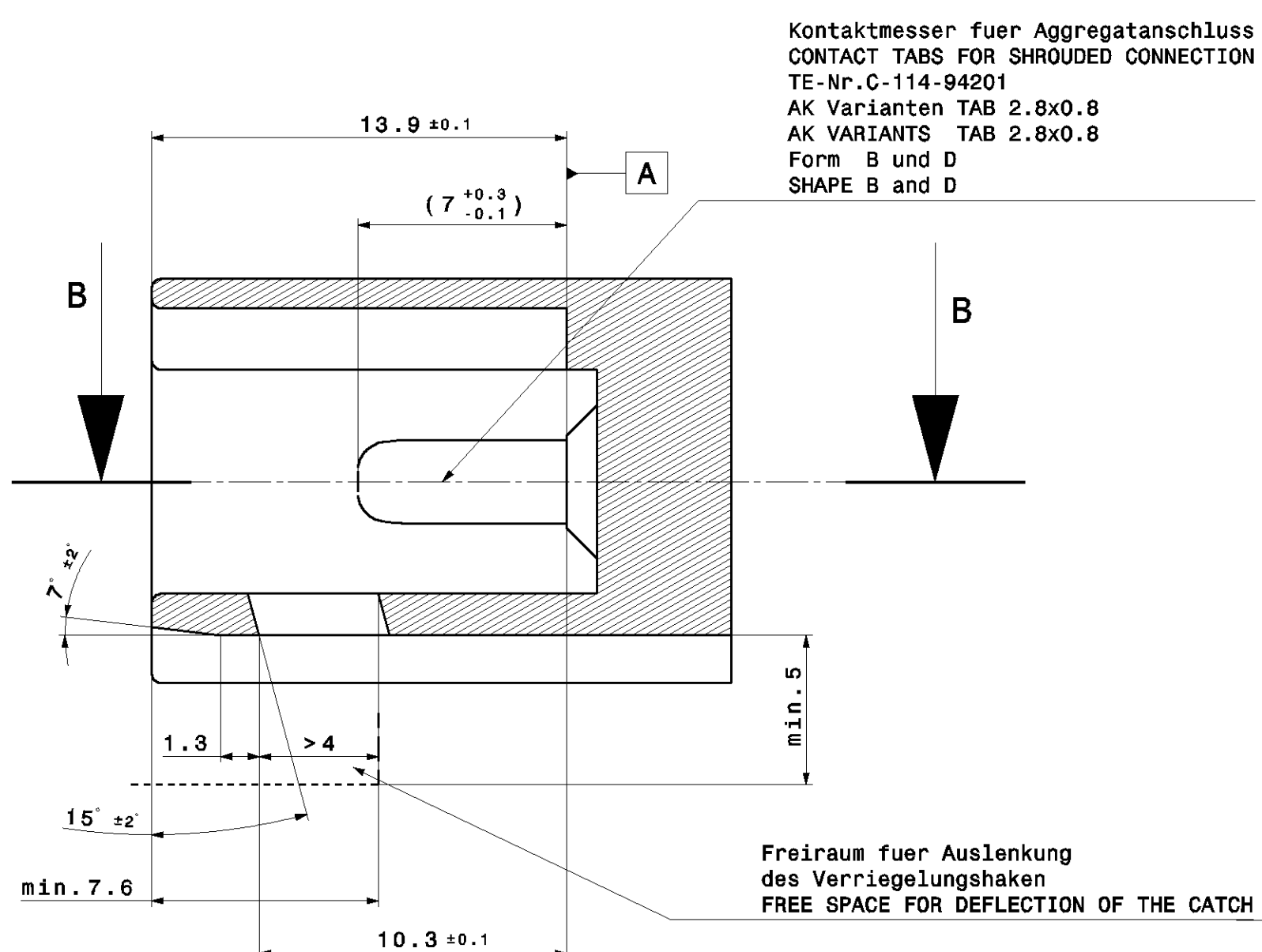
Betaetigungsfreiraum
OPERATION SPACE



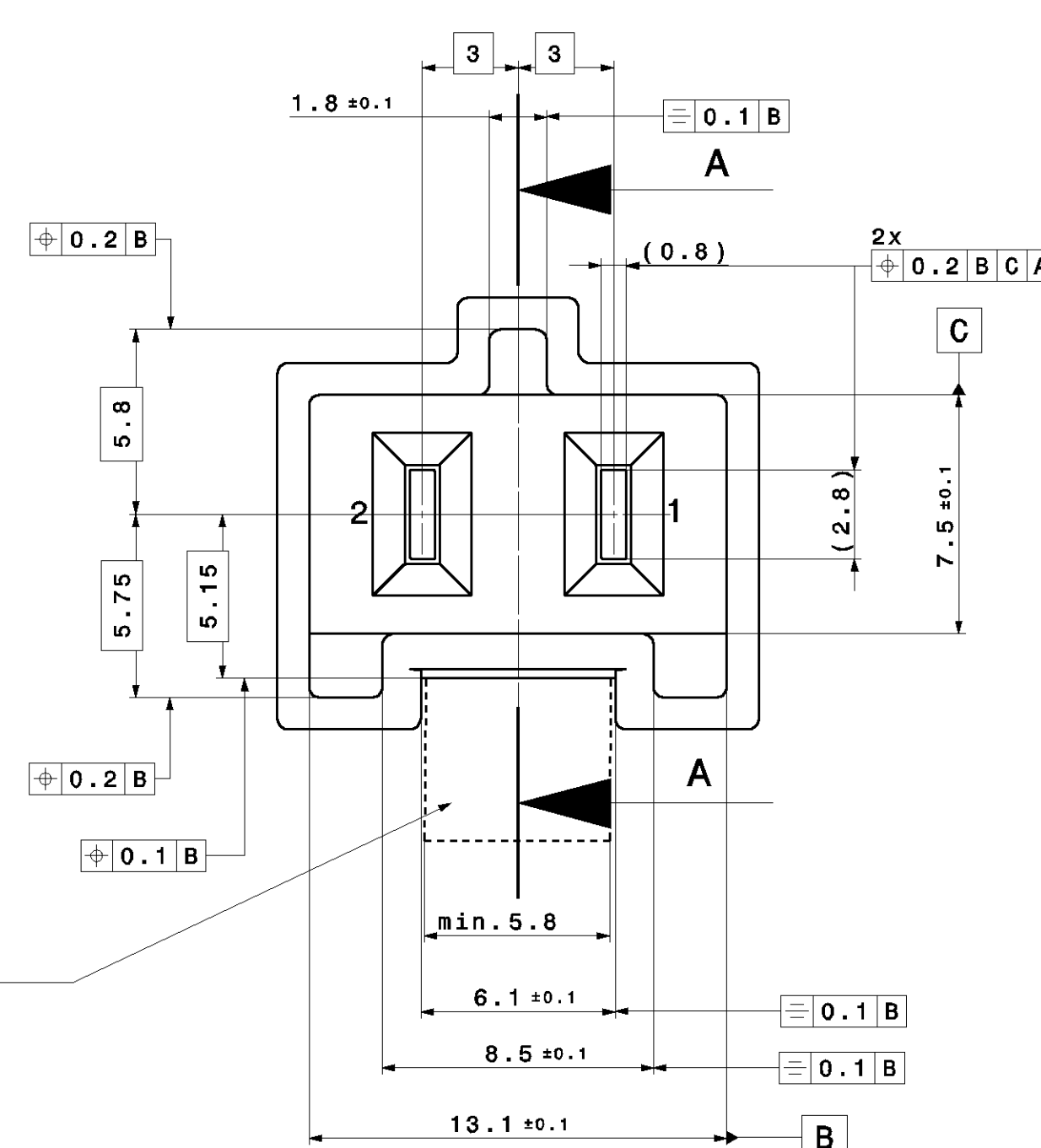
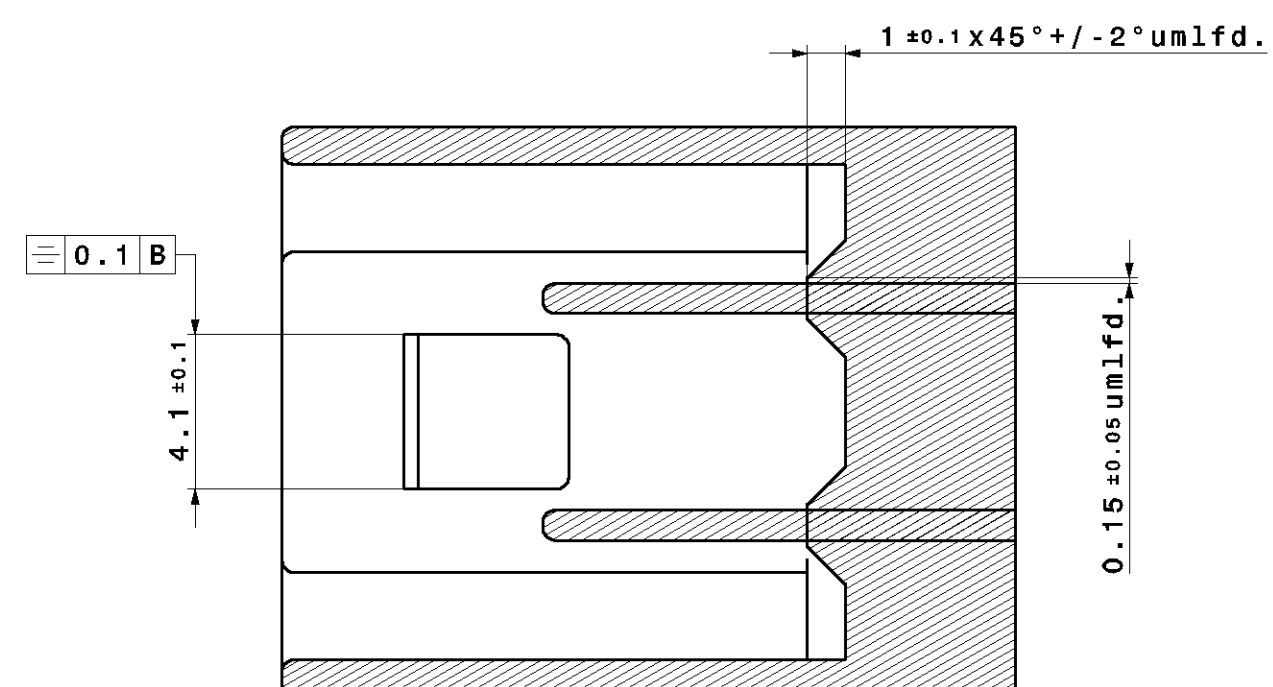
Isometrische Ansicht
ISOMETRIC VIEW



SECTION A-A



SECTION B-B



GENERAL TOLERANCES FOR UNTOLERATED DIMENSIONS:

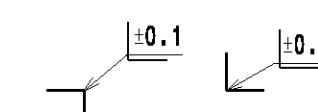
- ANGLE-DIMENSIONS [°]
TOLERANCE FOR ALL ANGLE-DIMENSIONS: ±2°
- RADII: [mm]
bis 1 1-3 3-10 10-20 20-30 30-50
±0.2 ±0.3 ±0.4 ±0.5 ±1 ±2
- DISTANCE-DIMENSIONS: DIN 2768-mH
- GENERAL TOLERANCE FOR SYMMETRY: ±0.3

CONNECTOR KEY-FACTS:

CONTACT CHAMBER:	1-2
CONTACT SYSTEM:	2.8mm
ADDITIONAL VALID DOCUMENTS:	
	HA NUMBER:
PRODUCT SPECIFICATION:	EPS-100095-00
PROCESSING SPECIFICATION:	EVS-100095-00
SPECIFICATION:	EPH-100017-00

COMMENTS:

- CODING A IS SHOWN
- UNDIMENSIONED WALL THICKNESS s=0.8 - 1.5mm
- DRAFT ANGLE WITHIN TOLERANCE.
- MAX. SPLIT LINE 0.1
- MAX. BURR 0.3
- UNDIMENSIONED RADII 0.35+/-0.1



	Lieferantennummer SUPPLIER NUMBER
Passende Kupplung MATCHING FEMALE HOUSING	708-450-...00
Passender Stecker MATCHING MALE HOUSING	708-650-...00

00	Ersterstellung / Initial edition	17.03.2022	TB
Test instructions			
Crude state	Material	Final state	Gross weight g/pc Final weight g/pc
Material-Nr. / No.	Tolerances	siehe Tabelle	Surface cm ² /pc Edges Geometric tolerances
Checked	Date	Name	Scale 5:1 GAD System Version CATIA V5
Released	Title		DIN A1
HIRSCHMANN AUTOMOTIVE		Drawing - No.	872-929-...00
A-680 Rastwell-Stecker		Origin	Replacement

This material contains information protected by copyright. It is not to be reproduced or transmitted in any form or by any means without the prior written consent of Hirschmann Automotive.

Valid from: 20220427 Valid until: ... Status: Kundenfreigabe