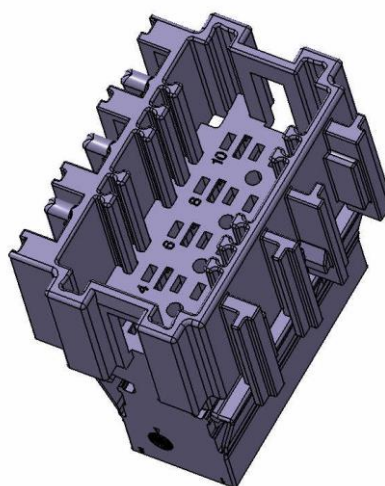
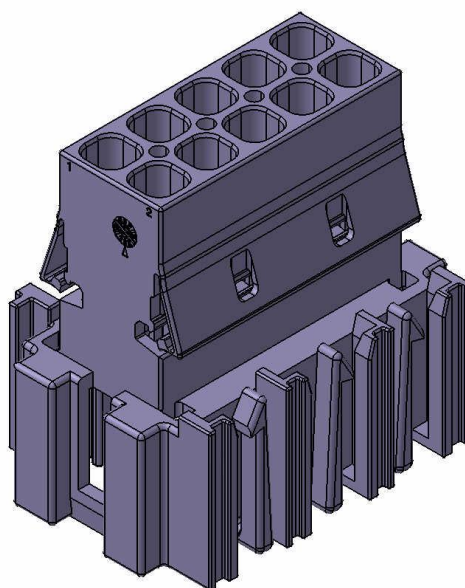




HIRSCHMANN
AUTOMOTIVE

Process Specification

10way 2.8 EasyConn M Connector



EVS-100049-00
Version 00

Content

1	General Information	3
1.1	Introduction.....	3
1.2	Applying relevant information / documentation	3
2	Delivery Condition / Product Components	4
2.1	Delivery Condition	4
3	Usable Contacts.....	4
4	Insertion and removal of the contacts	5
4.1	Assembling of the contacts.....	5
4.1.1	Primary lock	5
4.1.2	Secondary lock	5
4.2	Removal of the contacts	6
5	Connection and Disconnection of the connectors	7
5.1	Connection of the connector.....	7
5.2	Disconnection of the connector	8
6	Revision table	9

1 General Information

1.1 Introduction

This processing specification is valid for Hirschmann Automotive 10way 2.8 EasyConn male connectors. It describes the delivery conditions and the product components. Furthermore, it specifies assembling and disassembling of the connectors and the contacts.

Based on the processing specification of contact suppliers the contact assembling and disassembling is described.

The harness maker is responsible to follow all processing specifications and other relevant rules and regulations.

In case of inappropriate/incorrect assembly a damage claim will be rejected.

1.2 Applying relevant information / documentation

a)	Application specification TE 114-18051	Company Tyco Electronics AMP MCP 2.8 Contact System / Flachstecker 2,8mm
b)	„Deutsche Norm“ DIN EN 60352-2	Solder free electrical connection part 2: crimp connection
c)	TB Flat plug terminal C-1355052	Company Tyco Electronics TAB 2.8x0.8mm

2 Delivery Condition / Product Components

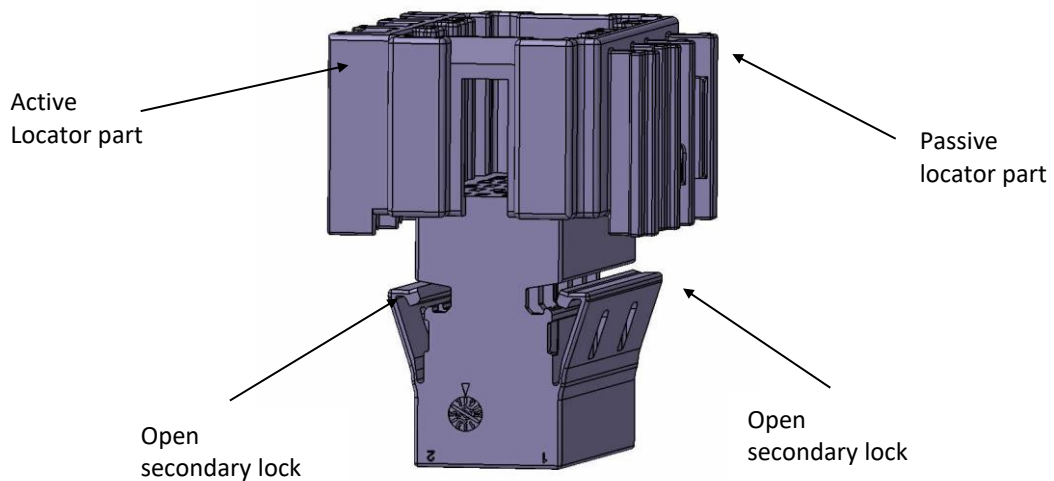
2.1 Delivery Condition

The male connector consists of a housing with molded active secondary locks.

The connectors are delivered with open secondary locks. In case the secondary lock has been partially or fully closed during transportation, it should be reopened prior the contact assembly. How to open the secondary lock, see section 4.2.

In addition, the male connector has optional active and passive locator parts.

symbol image



3 Usable Contacts

Contact system: see customer drawing

Crimp tools, e.g. applicators, hand crimp tools and removal tools - please see process specification of the terminal manufacturer.

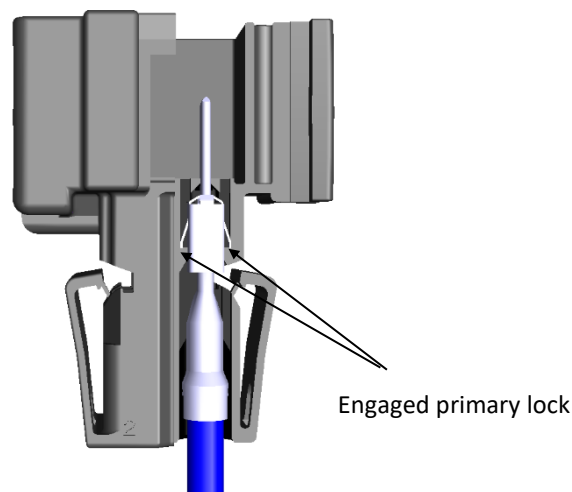
4 Insertion and removal of the contacts

4.1 Assembling of the contacts

4.1.1 Primary lock

The contact housings are delivered ready for assembly. During assembling the primary locking mechanism engages in the housing. The contacts do not have a keying and therefore can also be inserted 180° turned. Correctly mounted locks can be recognized with an audible click.

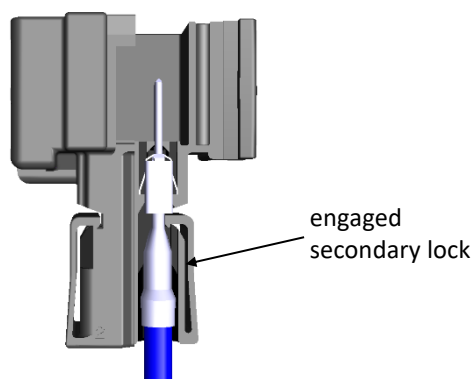
symbol image



4.1.2 Secondary lock

After primary locks are engaged in the connector, secondary locks can be activated by actuating the latches. Both latches must be actuated. Correctly mounted locks can be recognized with an audible click.

symbol image



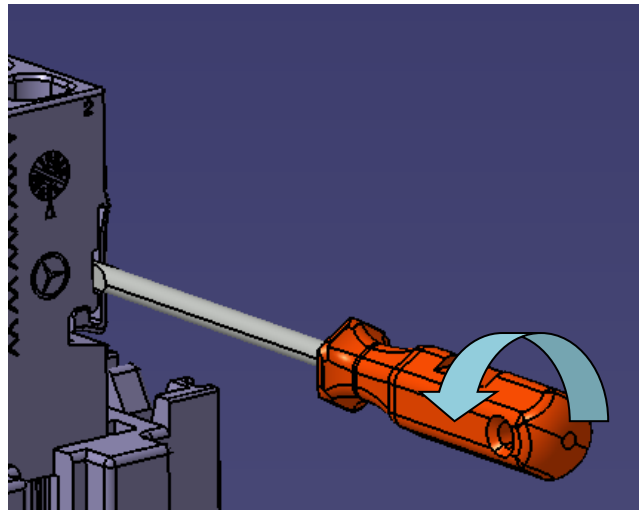
4.2 Removal of the contacts

For repair purposes, the contacts can be removed.

A small screwdriver, e.g. 2.0x75, can be used to disengage the secondary lock. It should be inserted sideways to a designated free area between the latch and the housing. Subsequently, the screwdriver should be turned slightly towards the cable outlet, as a result the latch can be unlocked carefully.

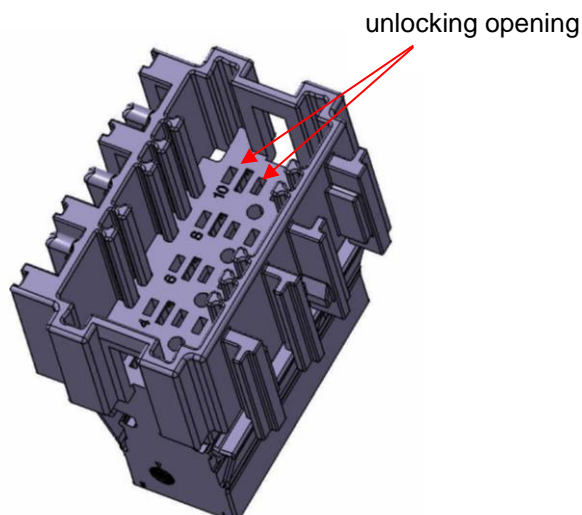
Attention, the latch should not be bent beyond the opening angle of the delivery condition and the contacts should not be damaged during the process.

symbol image



After the latch is opened, primary lock can be disengaged and contacts can be removed with original release tool, see terminal manufacturer processing specification.

symbol image



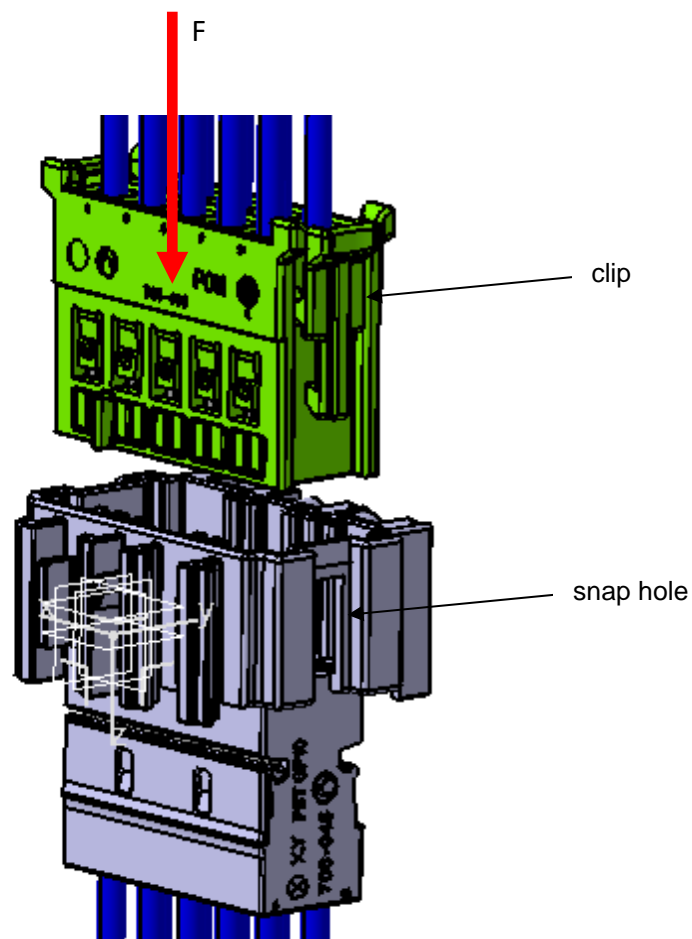
5 Connection and Disconnection of the connectors

5.1 Connection of the connector

After assembling the contacts, the plug-in connection can be completed by mounting the female connector.

The plug-in connection is completed by inserting vertically in a suitable female housing until the clip is correctly engaged. Engaging of connector housing in counterpart is ensured by clicking.

symbol image

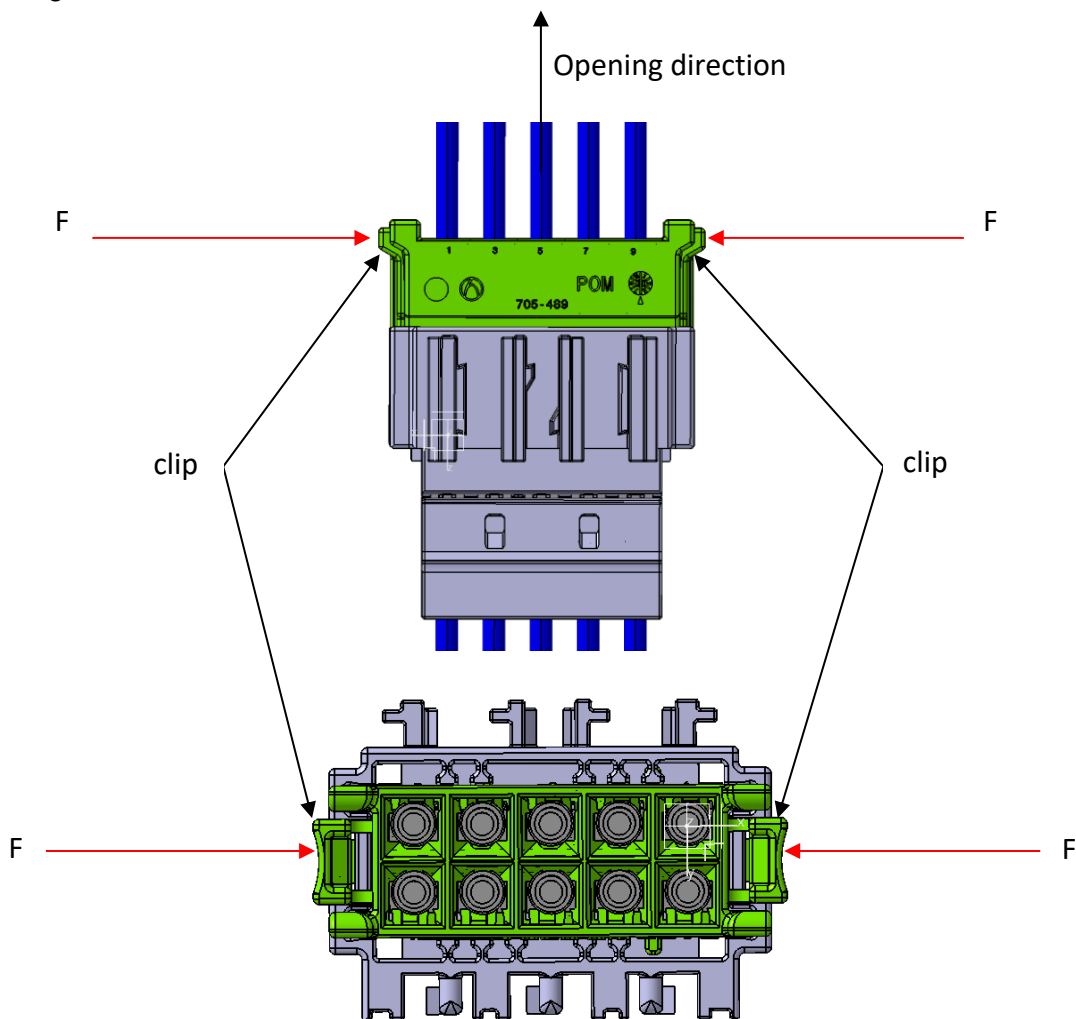


5.2 Disconnection of the connector

The matching female housing is held positively in the male housing.
The connector can be disconnected by deactivating the clip and pulling in the direction of the wire.

It is not allowed to disconnect the housing by pulling on the wire!

symbol image



6 Revision table

Edition date	Index	Editing
Rev. 00	first edition	J. Neußl