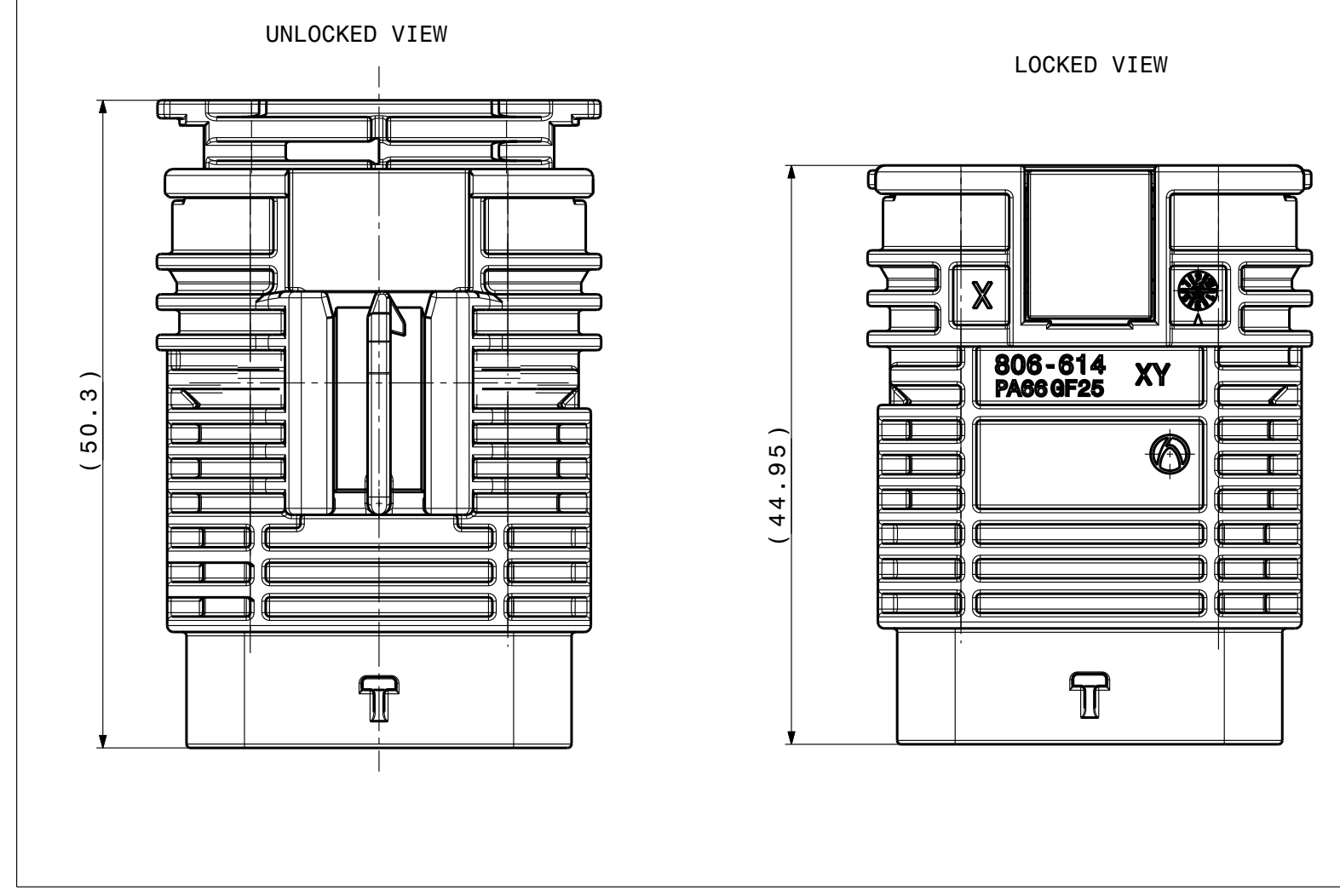
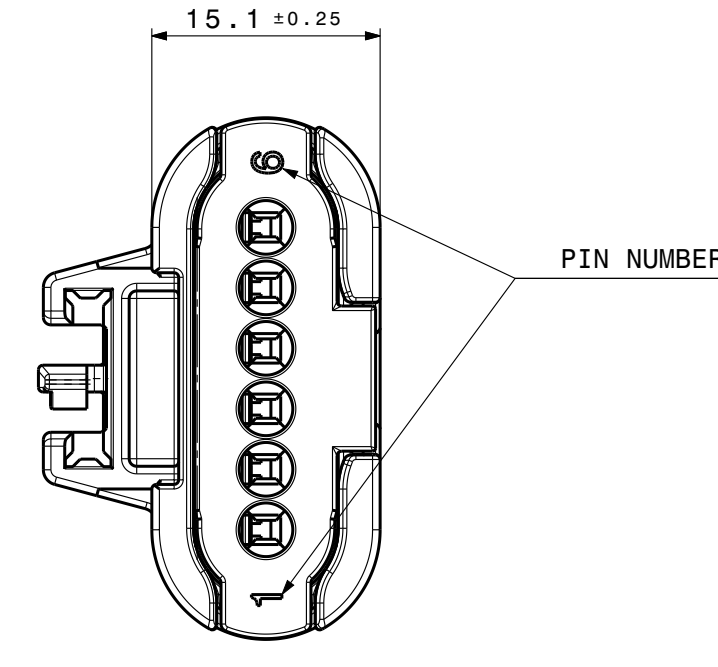
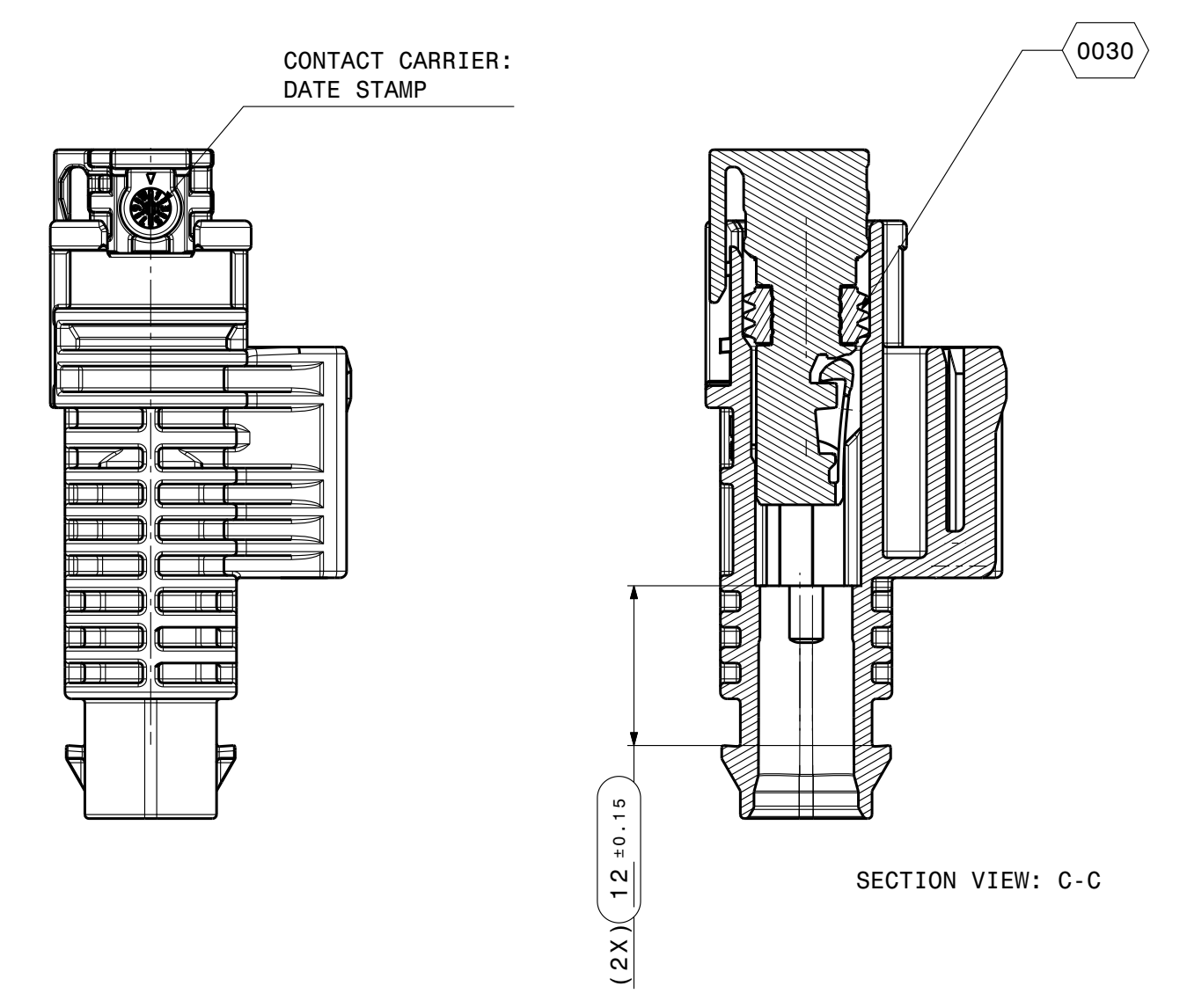
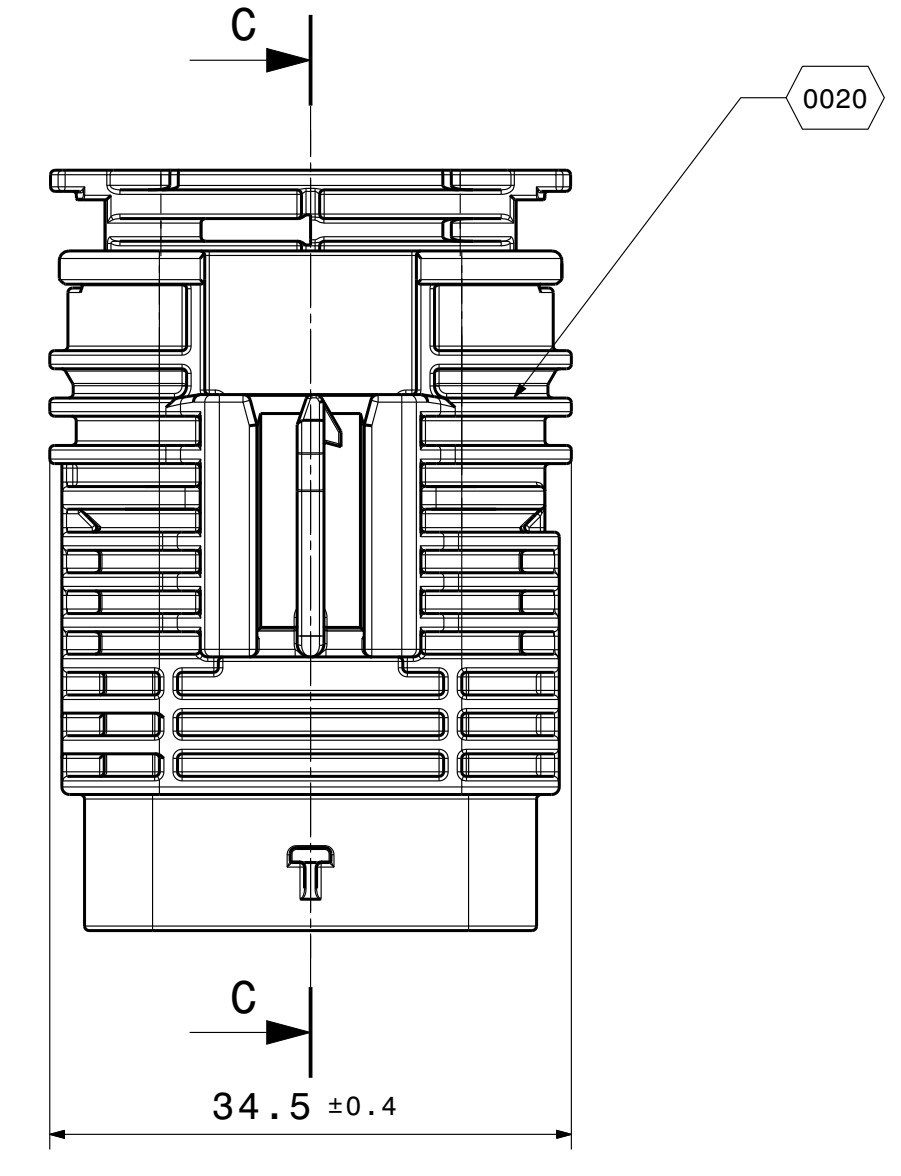
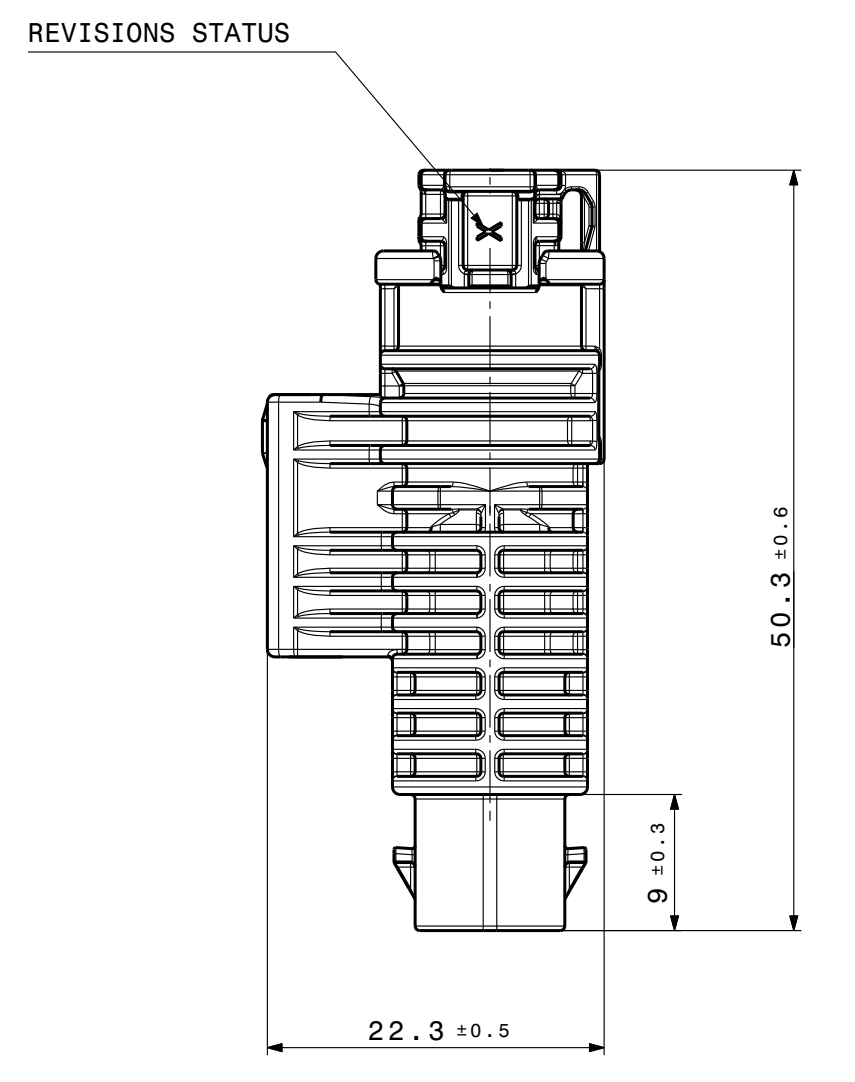
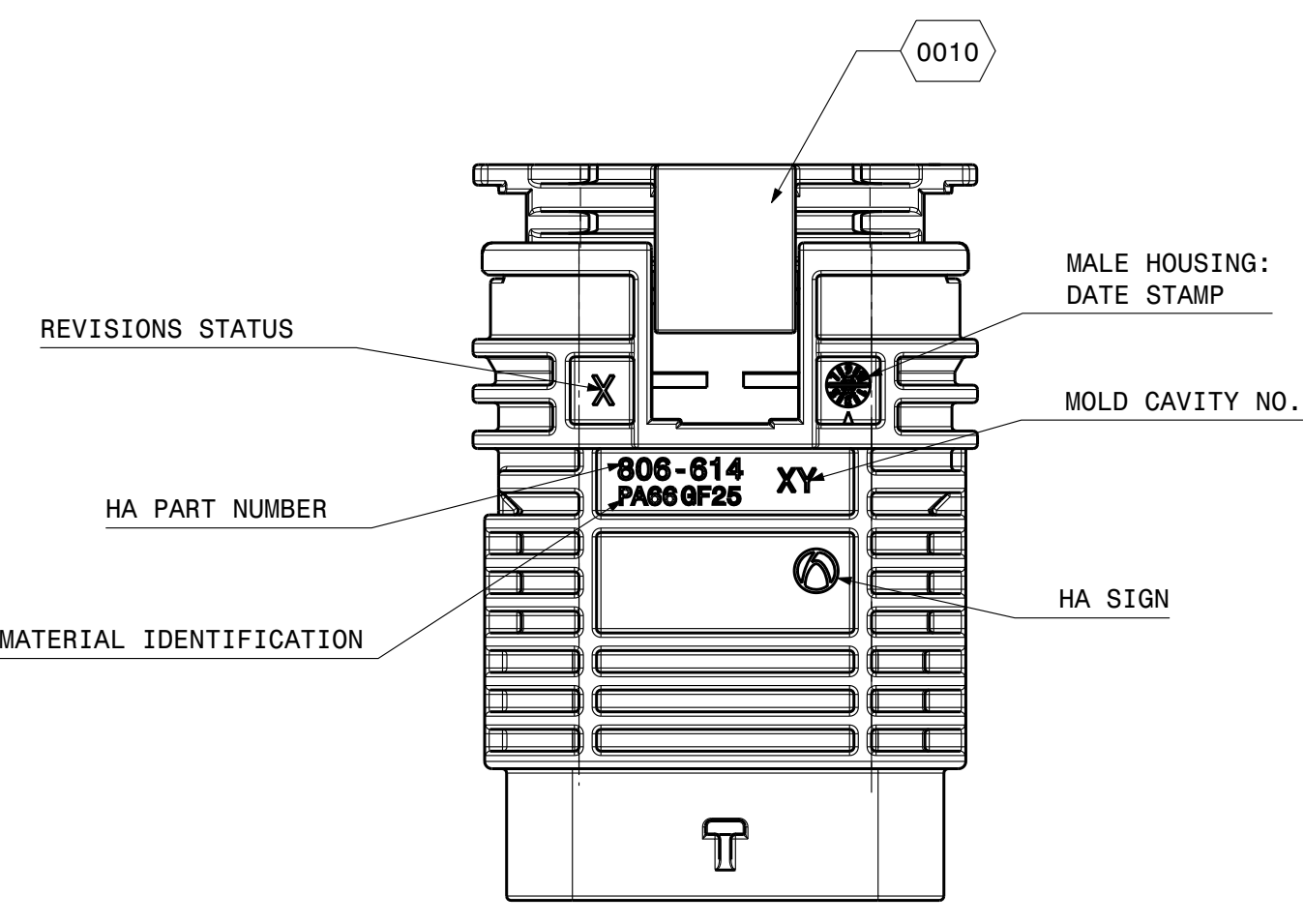
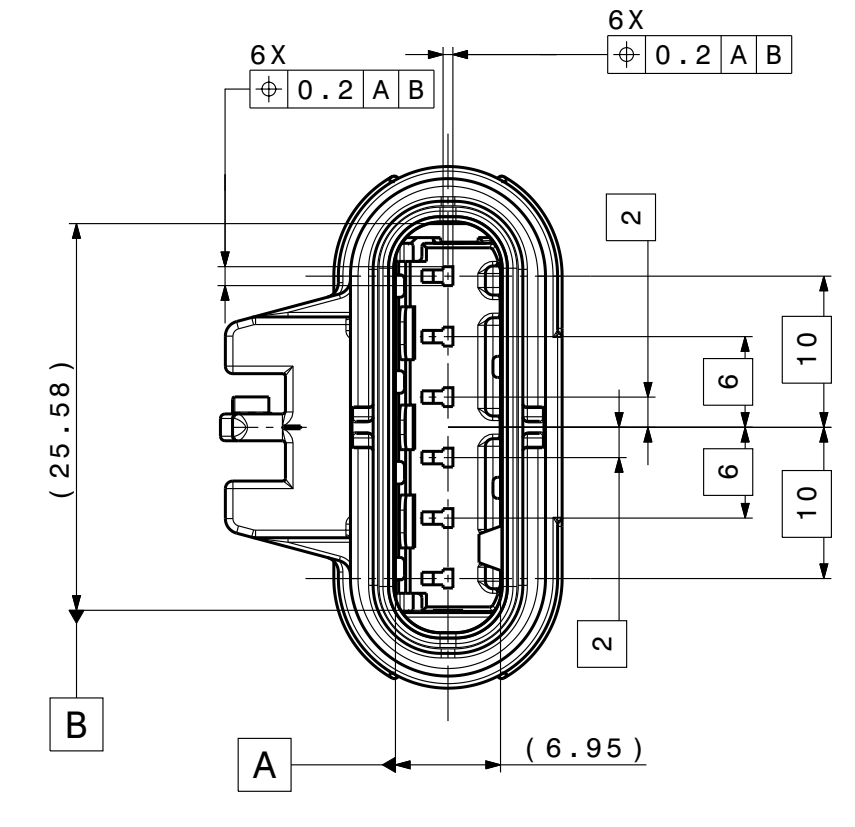
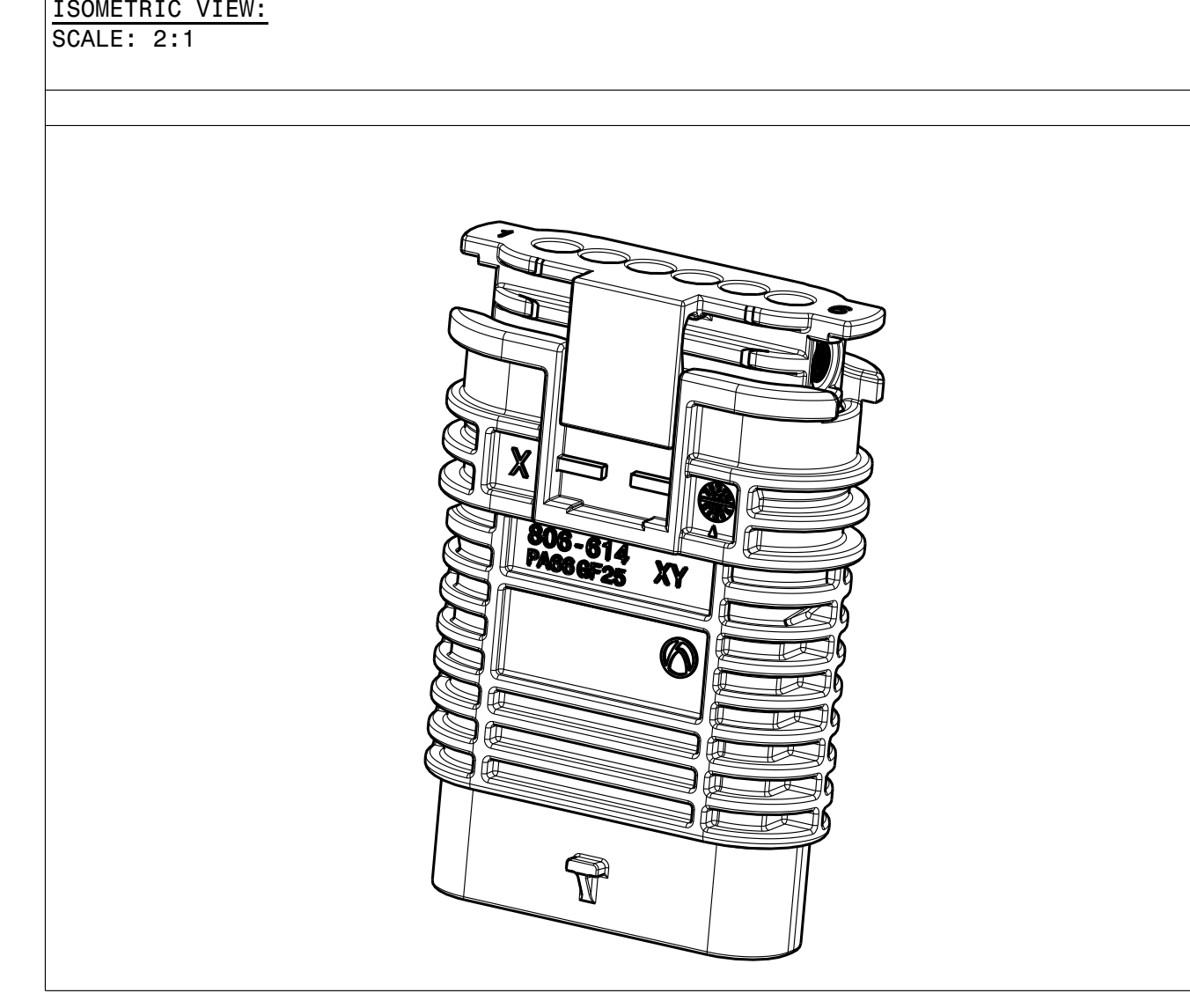
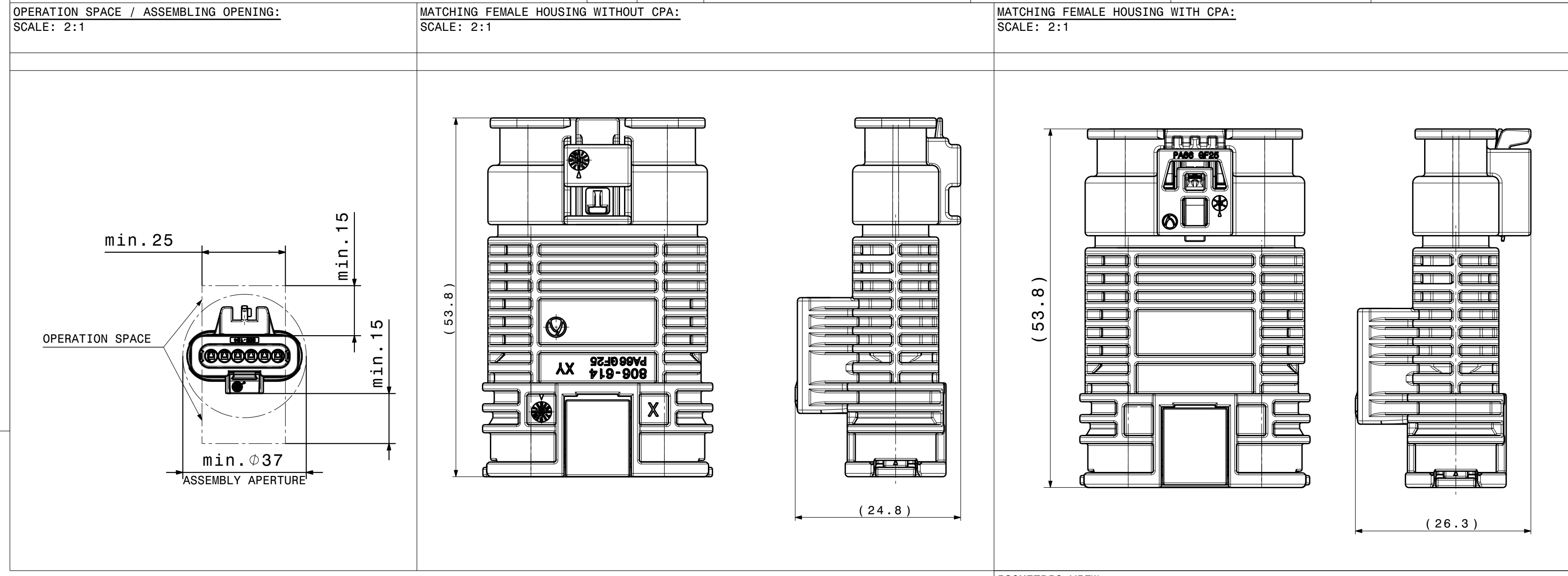


VIEW IN LOCKED AND UNLOCKED POSITION:
ONLY POSSIBLE IN COMBINATION WITH INTERFAE CONNECTION AND IN-LINE CONNECTION
SCALE: 2:1



POS.	COUNT:	DESCRIPTION:	MATERIAL:	COLOR:	COMMENT:
0010	1	CONTACT CARRIER	PA66-GF25	BLACK SIMILAR RAL9011	...
0020	1	MALE HOUSING	PA66-GF25	BLACK SIMILAR RAL9011	...
0030	1	RADIAL LIP SEAL	LSR SHORE 50-A	TOMATO RED RAL3013	...



GENERAL TOLERANCES FOR UNTOLERATED DIMENSIONS:

1. ANGLE-DIMENSIONS [°]
TOLERANCE FOR ALL ANGLE-DIMENSIONS: ±2°

2. RADII: [mm]

r	1-3	3-10	10-20	20-30	30-50
±0.2	±0.3	±0.4	±0.5	±1	±2

3. DISTANCE-DIMENSIONS: DIN 2768-mH

4. GENERAL TOLERANCE FOR SYMMETRY: ±0.2

CONNECTOR KEY-FACTS:

CONTACT CHAMBER:	1-6
CONTACT SYSTEM:	1.2x0.6
MAX. WSR [mm²]	1.00
MAX. ISO-Ø [mm]	2.1
MAX. CHAMBER-Ø [mm]	Ø3.55
WATER TIGHTNESS (IP-CODE) ACC ISO 20653	IPx7-IPx9K
WATER TIGHTNESS ACC LV214 2010-04	P023 (INCL. PROTECTION CAP AT IPx9k)
DYNAMIC LOAD ACC LV214 Pg17 2010-04	S04 SURFACE: Ag
TEMPERATURE AREA (1000h) ACC LV214 Pg21 2010-04	-40°C / +150°C
FLAME RESISTANCE ACC UL94 (ACC. DATA SHEET)	HB (1.6mm WALL THICKNESS)

ADDITIONAL VALID DOCUMENTS:

	HA NUMBER:	CUSTOMER NUMBER:
MATCHING TO INTERFACE CONNECTION:	872-975-...00	---
SPECIFICATION LOCATOR PARTS:	---	TYCO: 114-18063-002
MATCHING TERMINAL:	---	KOSTAL: 10322345-1
MATCHING PROTECTION CAP:	808-012-...00	---
CLIP-SLOT	808-043-...00	---
MATCHING COUNTERPART HIRSCHMANN:	805-124-...00 872-861-...00	---
PRODUCT SPECIFICATION:	EPS-100011-00	---
PROCESSING SPECIFICATION:	EVS-100014-00	---

COMMENTS:
1. CODING A IS SHOWN
2. DELIVERY STATUS AS DRAWN AS BULK GOOD
3. ENGLISH TEXT IS VALID
4. MISSING DIMENSIONS SEE CAD-MODEL. THEREFORE THE GENERAL-TOLERANCES ARE VALID
5. DESIGN DEVIATIONS COMPARED WITH DETAIL DRAWINGS ARE INSIGNIFICANT. THE DETAIL DRAWINGS ARE VALID.
6. PART CORRESPONDS TO EU SCRAP CAR GUIDELINE 2000/53/EG
7. CHANGES BASED ON TECHNICAL PROGRESS ARE IN THE DECISION OF THE MANUFACTURER! DETAILS OF IMPLEMENTATION ARE LEFT TO MANUFACTURER.
8. MAX. 30% RECLAIM PERMITTED
9. PART IDENTIFICATION SIMILAR DIN 1451
10. DRAFT ANGLE WITHIN TOLERANCE.
11. MAX. SPLIT LINE 0.2
12. MAX. BURR 0.3
13. DIMENSIONS MARKED WITH ARE DOCUMENTED IN THE INITIAL SAMPLE INSPECTION REPORT (ISR)!
NOT MARKED DIMENSIONS ARE ALSO MEASURED. VARIATIONS MUST BE CORRECTED.

PART NUMBER:	REVISION:	CODING:	COLOR:	WEIGHT:	COMMENT:
806-614-521	C	A	SEE TABLE	13 g	...
HIRSCHMANN AUTOMOTIVE:					

00 Initial Edition 31.08.2023 JEH

OPERATION	DESCRIPTION	DATE	BY
DESIGN
...

HIRSCHMANN AUTOMOTIVE

DRAWING NO.: 806-614-...00

SCALE: 2:1

FORMAT: AD

SHEET / BLATT: 1/1