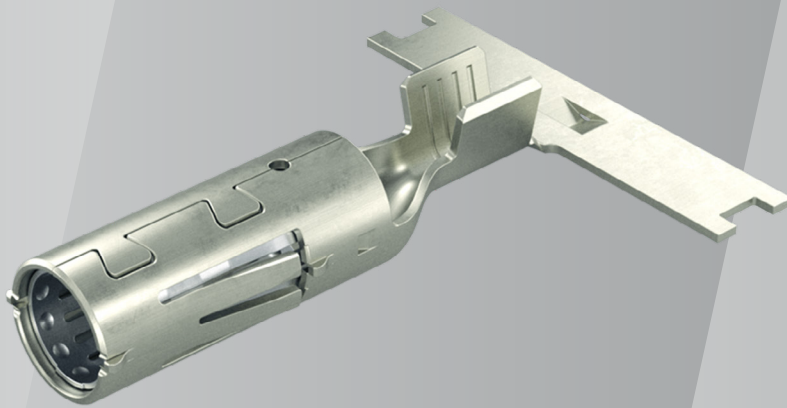


# Stamping & Bending Technology

Everything From a Single Source



HIRSCHMANN  
AUTOMOTIVE

# EVERYTHING FROM A SINGLE SOURCE

Stamped and stamped-bent parts, die cut stacks and much more: In our competence center for stamping technology, we engineer high-precision components and complex assemblies. They meet the usual high requirements of the automotive industry and are used for automotive electronics as well as in the electrical industry.

## We Develop and Manufacture for Our Customers

- stamped, stamped-bent, drawn and inserted parts
- components or complex assemblies
- pin, press-in and receptacle contacts
- pin headers and electromechanical modules
- die-cut stacks for rotors and stators
- in cooperation with partners: coatings of all kinds (strip and barrel plating)

According to requirements we use different materials. For example: high-tech copper alloys, aluminum, different types of stainless steel (e.g. 1.4301 or 1.4310), various steel qualities as well as pre-coated materials.

## Brilliant Technology Ensures Top Quality

In the competence center for stamping technology, our know-how regarding tooling always remains at the highest level – and the machinery is state-of-the-art as well. We generally use Bruderer machines. They work under a press force of up to 160 tons and with up to 1,800 strokes/min. Furthermore, we offer 1- and 2-step and composite manufacturing.

Due to the high-performance stamping, bending and composite tools, our products are manufactured efficiently, precisely, and of high quality. Depending on customer needs we offer them on spool, in a blister pack, or as bulk material for further processing.





## STAMPED & FORMING TECHNOLOGY

### CONSTRUCTION COMPONENTS | Stamped, Stamped-Bent, Drawn, and Inserted Parts

Whether standard products or individual customer solutions, our product range guarantees reliability under the most extreme conditions and in very demanding areas.

### PERFORMANCE THROUGH STATE-OF-THE-ART TECHNOLOGY

We manufacture precision-drawn and stamped-bent parts on high-quality “Bruderer” automatic punching machines. State-of-the-art process monitoring and lifting speeds of up to 1,800 strokes/min. enable us to manufacture economically, safely, precisely, and to high quality.

### STAMPING TECHNOLOGY

We manufacture stamped, stamped-bent, drawn, and inserted parts as well as construction components from all common materials and according to customer specifications.

### SURFACE TECHNOLOGY

Through strong partner companies we offer our customers pre- and post-treatment services:

- Gold Plating
- Silver Plating
- Nickel Plating
- Chrome Plating
- Burnishing
- Phosphating
- Tin Plating
- Galvanizing
- Pickling

And much more.

### HIRSCHMANN AUTOMOTIVE Pressfit Terminal (HAPT)

- flexible central web that folds out during the press-in process
- high spring forces keep the press-fit pin stable in the PCB
- ambient temperature of -40° C to +150° C
- validation in accordance with DIN EN 60352-5 and various customer standards



## DIE-CUT STACKING

We produce die-cut stacks for rotors and stators for the automotive and electrical industries from coated and uncoated sheets. Our products are used in the inductive field for electric motors and in hybrid technology.

Production takes place on state-of-the-art “Bruderer” high-performance automatic punching machines with a punching pressure of up to 160 t (up to 1,850 mm installation space) and stroke rates of up to 800 strokes/min. Twisting and turning of single lamellas as well as control of additional functions in the punching process are realized with the most modern die-cut stacking controls with up to 3 turning stations per tool.

We have a long-standing partner at our side for the manufacture of highly complex die stacking tools.



### Stefanie Sommer is your Contact for Individual Questions

Global Account Manager

+43 5522 307 1897

+43 664 884 564 82

stefanie.sommer@hirschmann-automotive.com

SEEKING MORE DETAILED INFORMATION?  
SCAN ME AND VISIT OUR WEBSITE.



**Hirschmann Automotive GmbH**

Oberer Paspelsweg 6–8  
6830 Rankweil, Austria

[www.hirschmann-automotive.com](http://www.hirschmann-automotive.com)  
[shop.hirschmann-automotive.com](http://shop.hirschmann-automotive.com)

