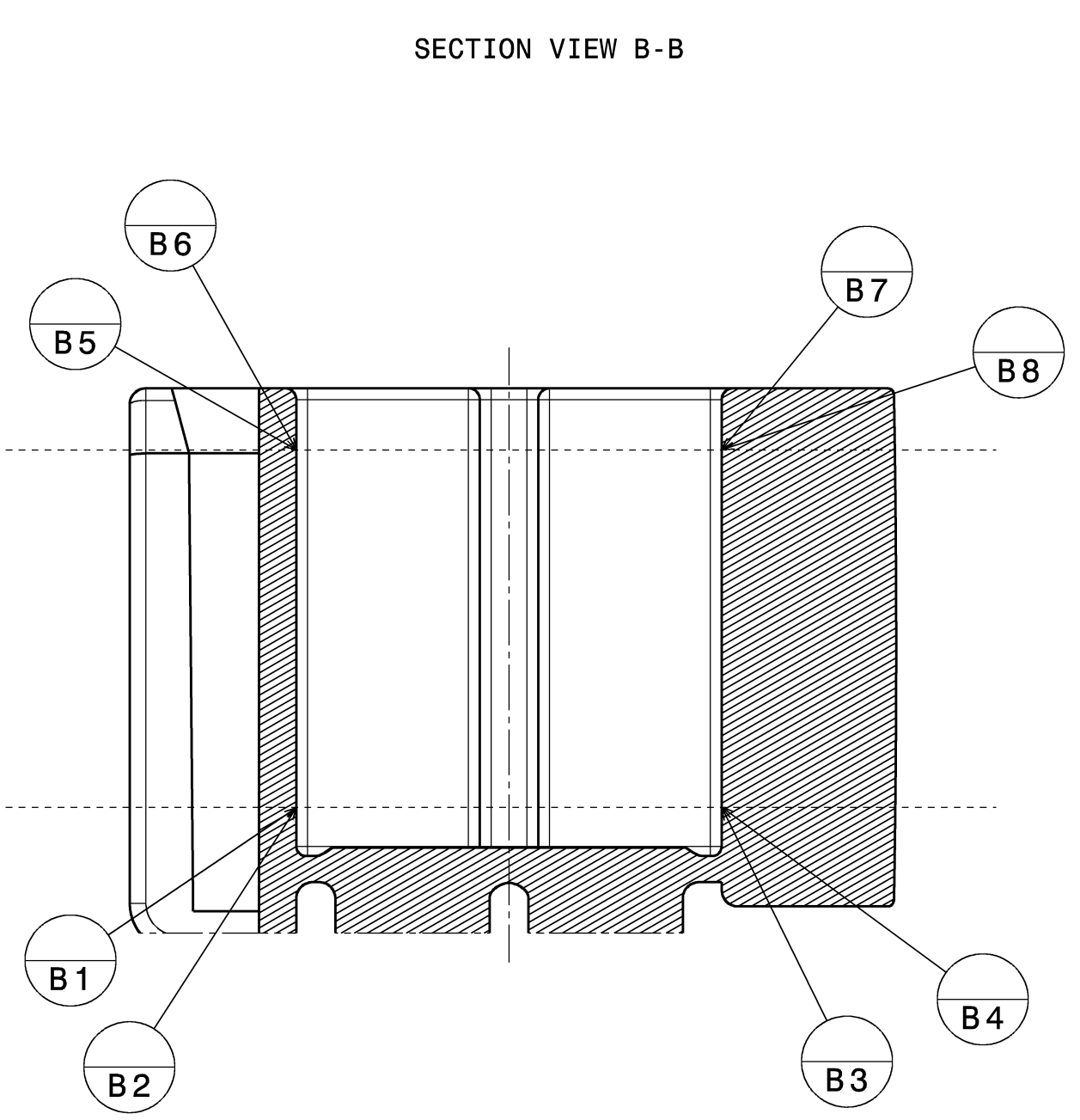
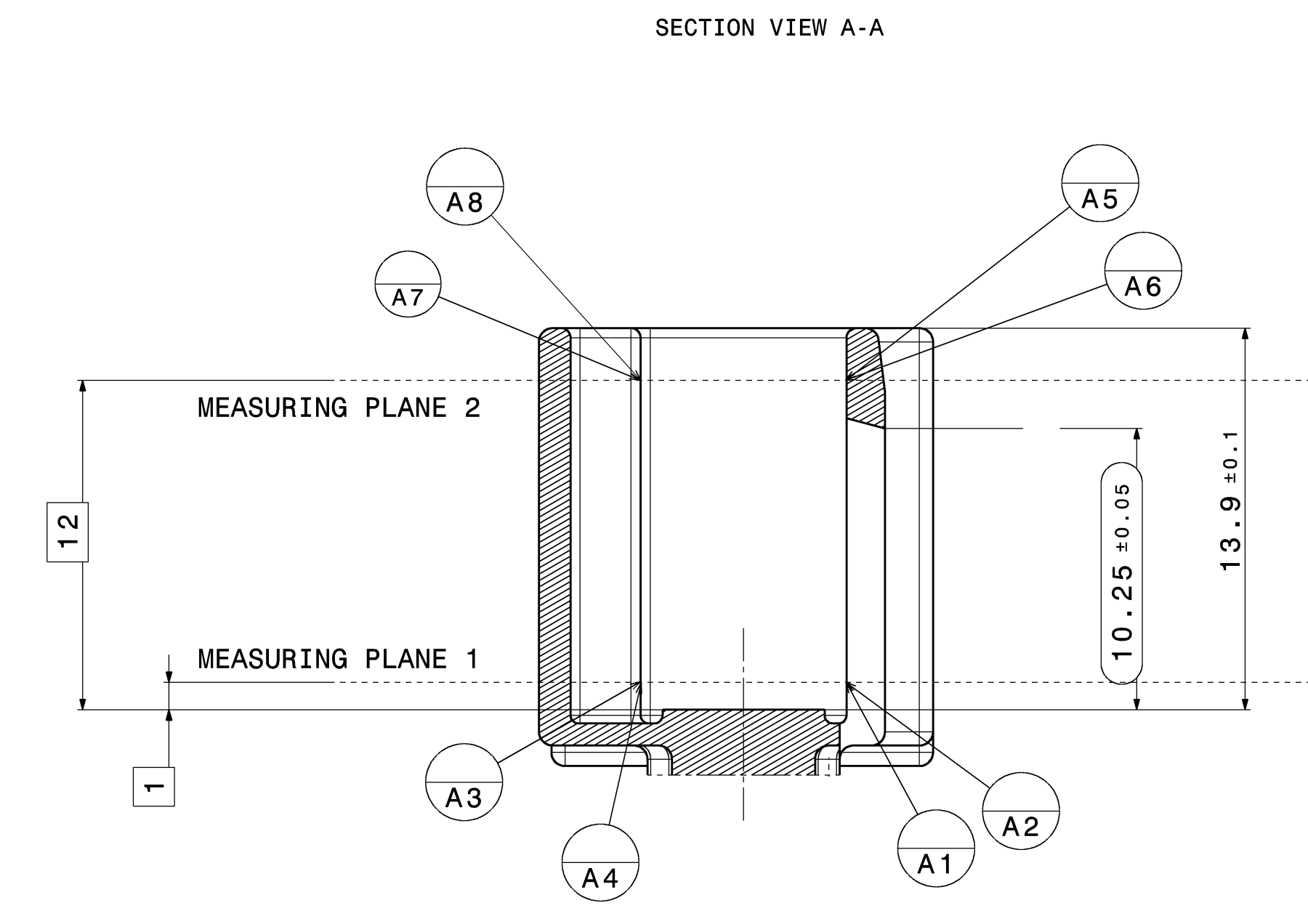
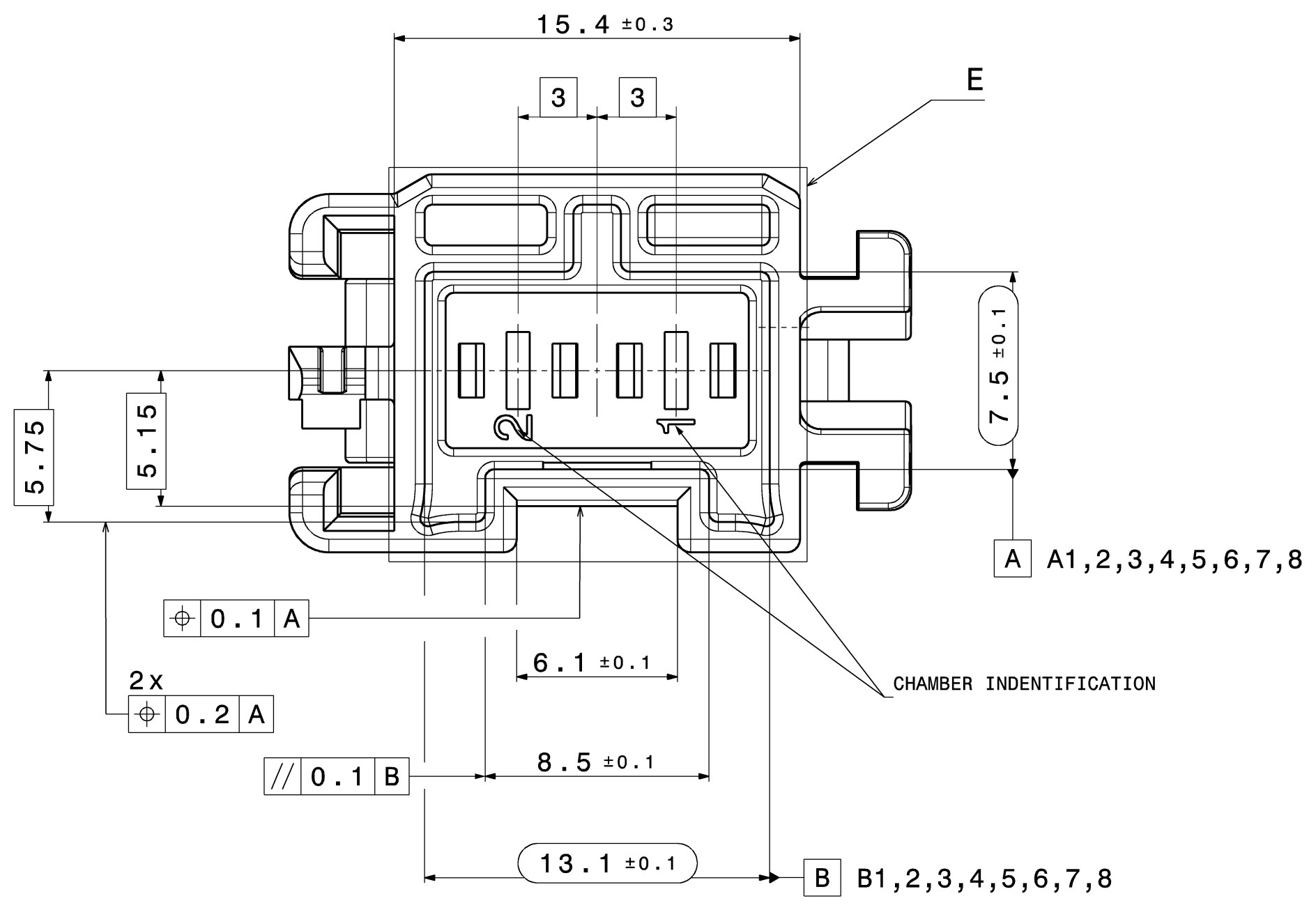


- MOULD CAVITY MARKING
- MATERIAL IDENTIFICATION
- HA-COMPANY SIGN
- HIRSCHMANN-NR.



- GENERAL TOLERANCES FOR UNTOLERATED DIMENSIONS:
- ANGLE-DIMENSIONS: ±1°
  - TOLERANCE FOR ALL ANGLE-DIMENSIONS: ±2°
  - RADII: [mm]
- |      |      |      |       |       |       |
|------|------|------|-------|-------|-------|
| TO 1 | 1-3  | 3-10 | 10-20 | 20-30 | 30-50 |
| ±0.2 | ±0.3 | ±0.4 | ±0.5  | ±1    | ±2    |
- DISTANCE-DIMENSIONS: DIN 2768-mH
  - GENERAL TOLERANCE FOR SYMMETRY: ±0.2

CONNECTOR KEY-FACTS:

CONTACT CHAMBER:	1-2
CONTACT SYSTEM:	2,8mm
MAX. WSR [mm²]:	4mm²
MAX. ISO-Ø [mm]:	MAX. INSULATION DIAMETER FOR 2.8: SEE RELEASED CONTACT DRAWING
DYNAMIC LOAD:	SG1
ACC EPS-100095-00:	SURFACE: Sn
TEMPERATURE AREA (1000H):	+130°C
ACC EPS-100095-00:	HB
FLAME RESISTANCE ACC UL94 (ACC. DATA SHEET):	(1.6mm WALL THICKNESS)

ADDITIONAL VALID DOCUMENTS:

HA NUMBER:	
MATCHING TO INTERFACE CONNECTION:	872-829-...00
MATCHING TERMINAL:	Tyco C-1355052
MATCHING COUNTERPART HIRSCHMANN:	706-450-...00
MATCHING TO JOINING ELEMENT:	Tyco C-114-18063-002
PRODUCT SPECIFICATION:	EPS-100095-00
PROCESSING SPECIFICATION:	EVS-100095-00
D-VALIDATION PLAN (FIRST RELEASE):	DVP-102829-00
SPECIFICATION:	EPH-100017-00

- COMMENTS:
- CODING A IS SHOWN
  - DELIVERY STATUS AS DRAWN
  - ENGLISH TEXT IS VALID
  - MISSING DIMENSIONS SEE CAD-MODEL. THEREFORE THE GENERAL-TOLERANCES ARE VALID
  - DESIGN DEVIATIONS COMPARED WITH DETAIL DRAWINGS ARE INSIGNIFICANT. THE DETAIL DRAWINGS ARE VALID.
  - PART CORRESPONDS TO EU SCRAP CAR GUIDELINE 2000/53/EG
  - CHANGES BASED ON TECHNICAL PROGRESS ARE IN THE DECISION OF THE MANUFACTURER! DETAILS OF IMPLEMENTATION ARE LEFT TO MANUFACTURER.
  - MAX. 30% - NO RECLAIM PERMITTED
  - PART IDENTIFICATION SIMILAR DIN 1451 ±0.2 ±0.2
  - DRAFT ANGLE WITHIN TOLERANCE.
  - MAX. SPLIT LINE 0.1
  - MAX. BURR 0.3
  - DIMENSIONS MARKED WITH ( ) ARE DOCUMENTED IN THE INITIAL SAMPLE INSPECTION REPORT (ESIR). UNMARKED DIMENSIONS ARE ALSO MEASURED BUT NOT DOCUMENTED IN THE ISIR. VARIATIONS MUST BE CORRECTED.

706-650-515	A	E	MAY GREEN SIMILAR RAL 6017
706-650-513	A	C	LIGHT BLUE SIMILAR RAL 6012
706-605-512	A	B	NATURE
706-650-511	A	A	BLACK SIMILAR RAL 9011

PART NUMBER: REVISION: CODING: COLOR:

00	Ersterstellung / Initial edition	29.07.2021	ALT
Version	Num.	Description of alteration	Date
Test instructions	Material	Final state	Break weight
Club state	PEI-Ø70		g/pc
Material-No.	Tolerances	siehe Tabelle	g/pc
Edges	DIN ISO 13715	surface	g/pc
Dimensional tolerances	DIN ISO 1101	dimension	g/pc
Form	ISO 1101	form	g/pc
Drawn	Date	Drawn	Drawn
29.07.2021	H. Karstl	29.07.2021	H. Karstl
Checked	Date	Checked	Checked
15.03.2022	T. Burk	15.03.2022	T. Burk
Released	Date	Released	Released
15.03.2022	T. Burk	15.03.2022	T. Burk
HIRSCHMANN AUTOMOTIVE			
Drawing - No. 706-650-...00			
Controlled status available in the system!			