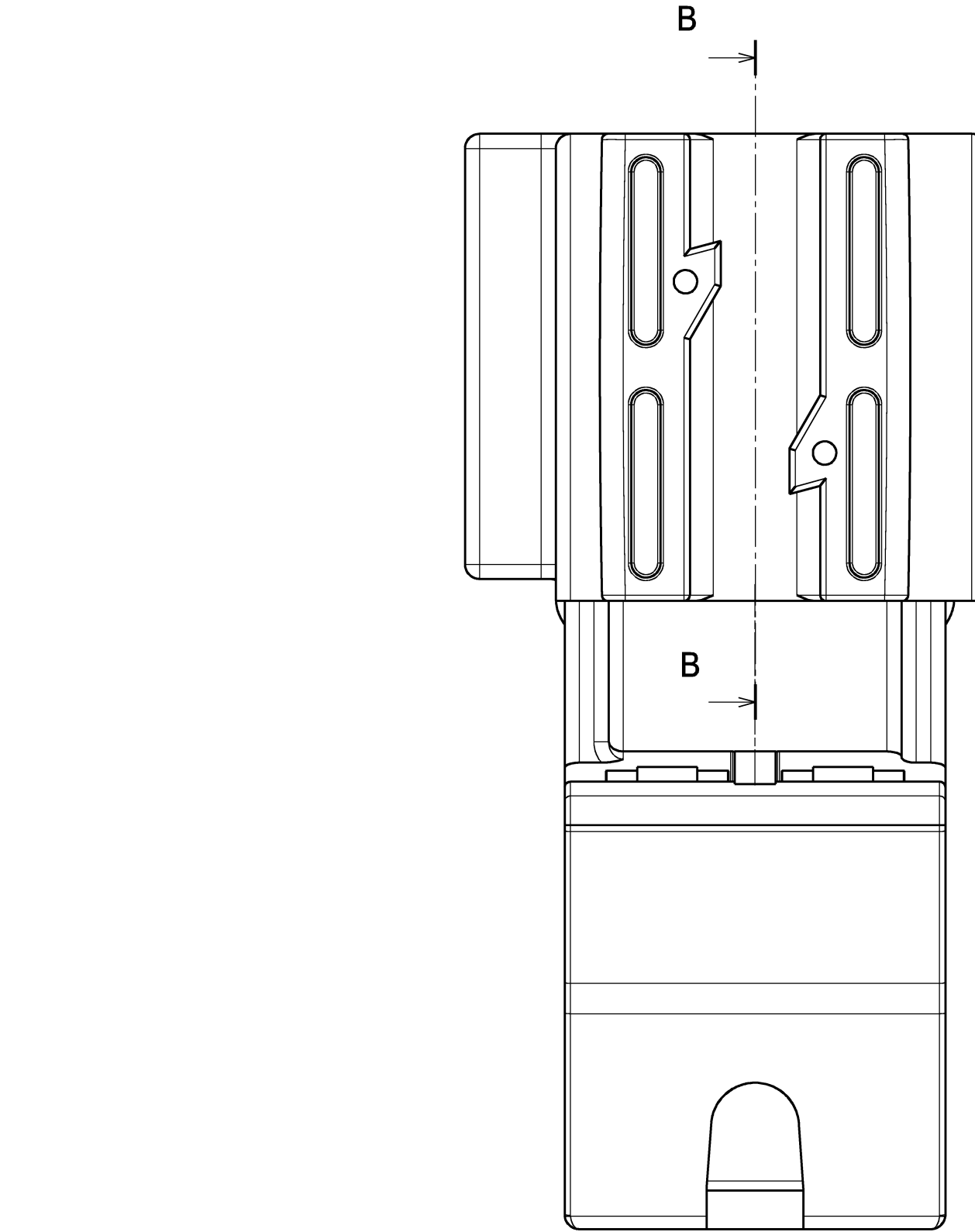
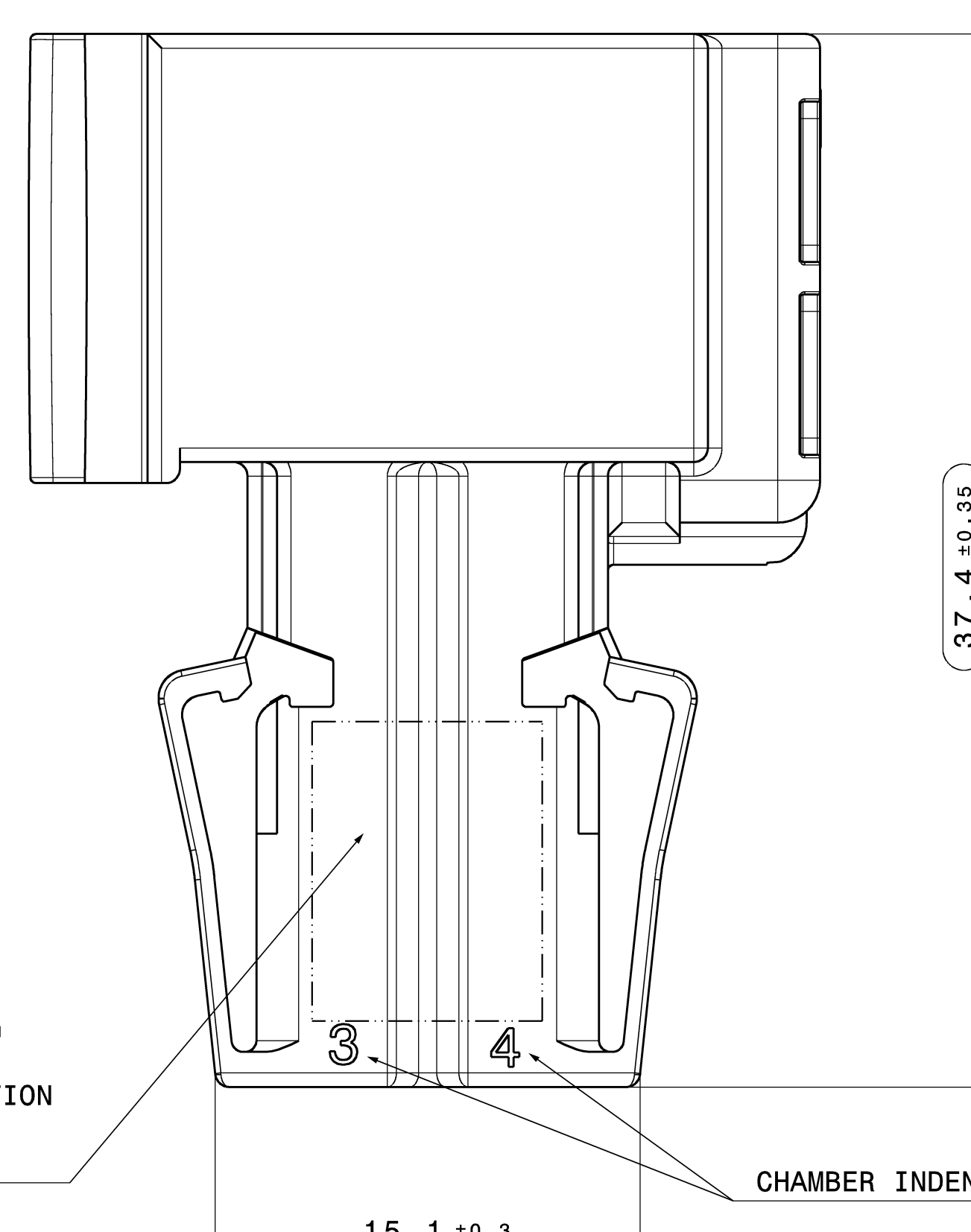


- REVISION LEVEL
- DATE
- FACTORY SIGN
- MOULD CAVITY MARKING
- MATERIAL IDENTIFICATION
- HIRSCHMANN-NR.



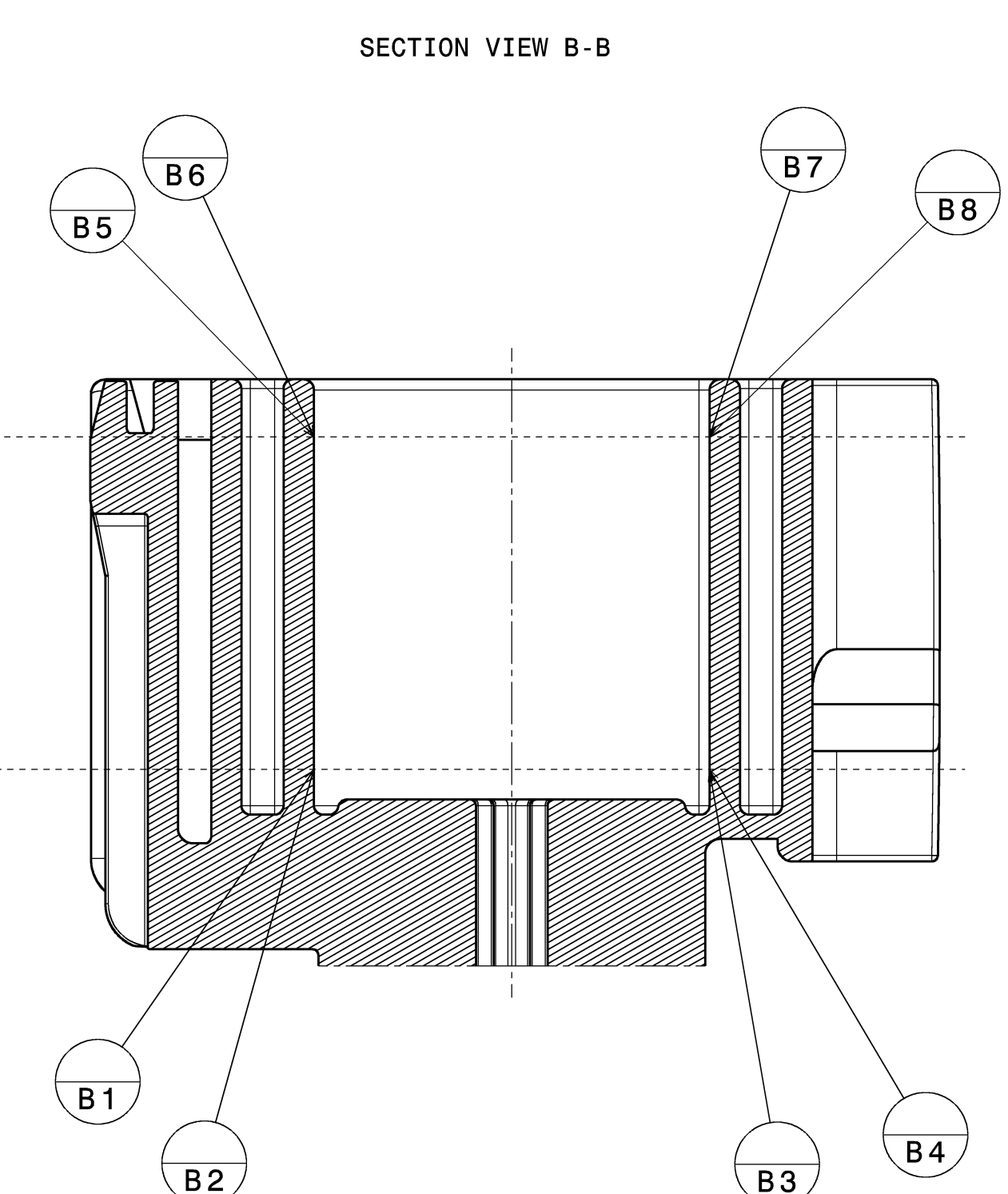
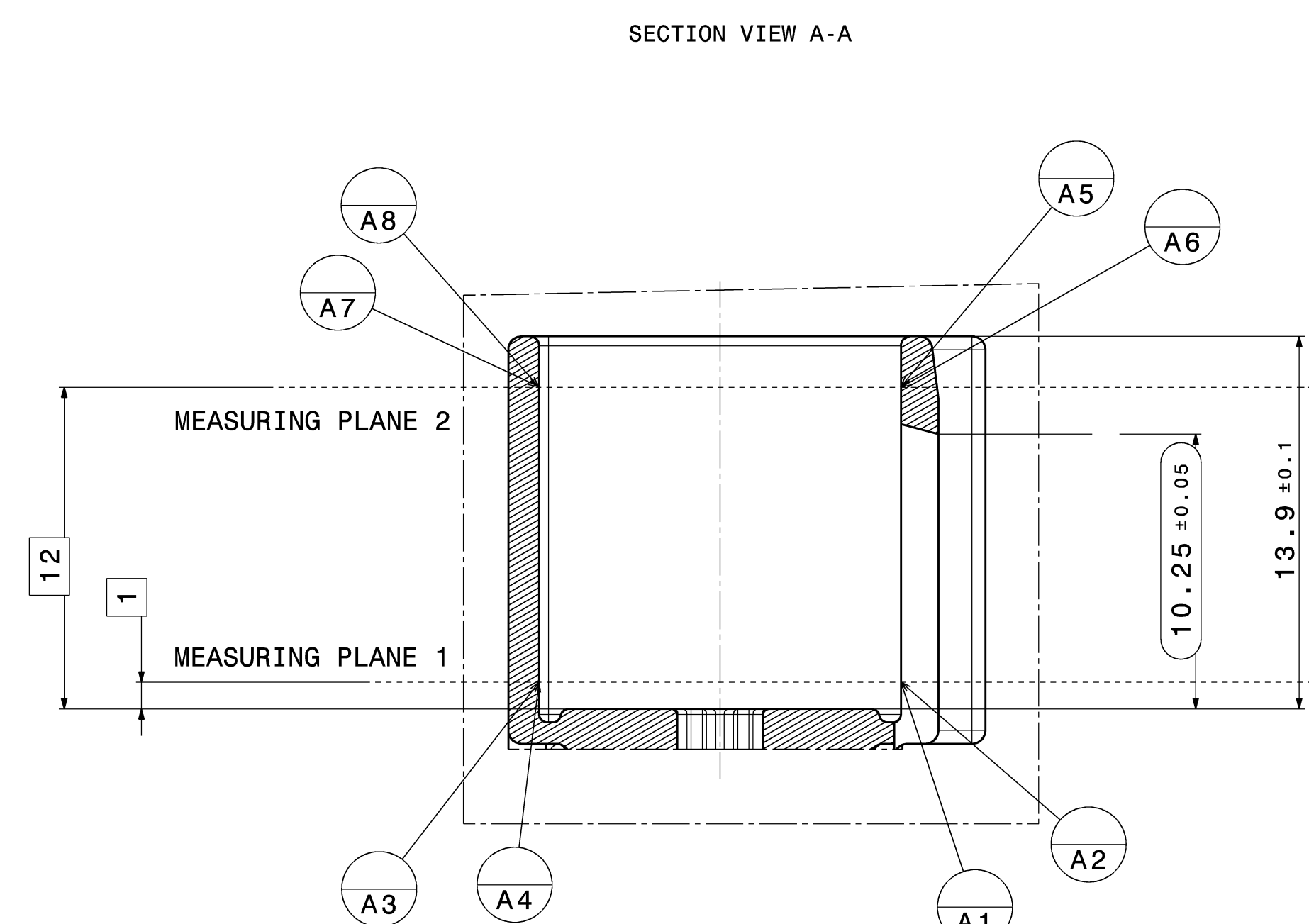
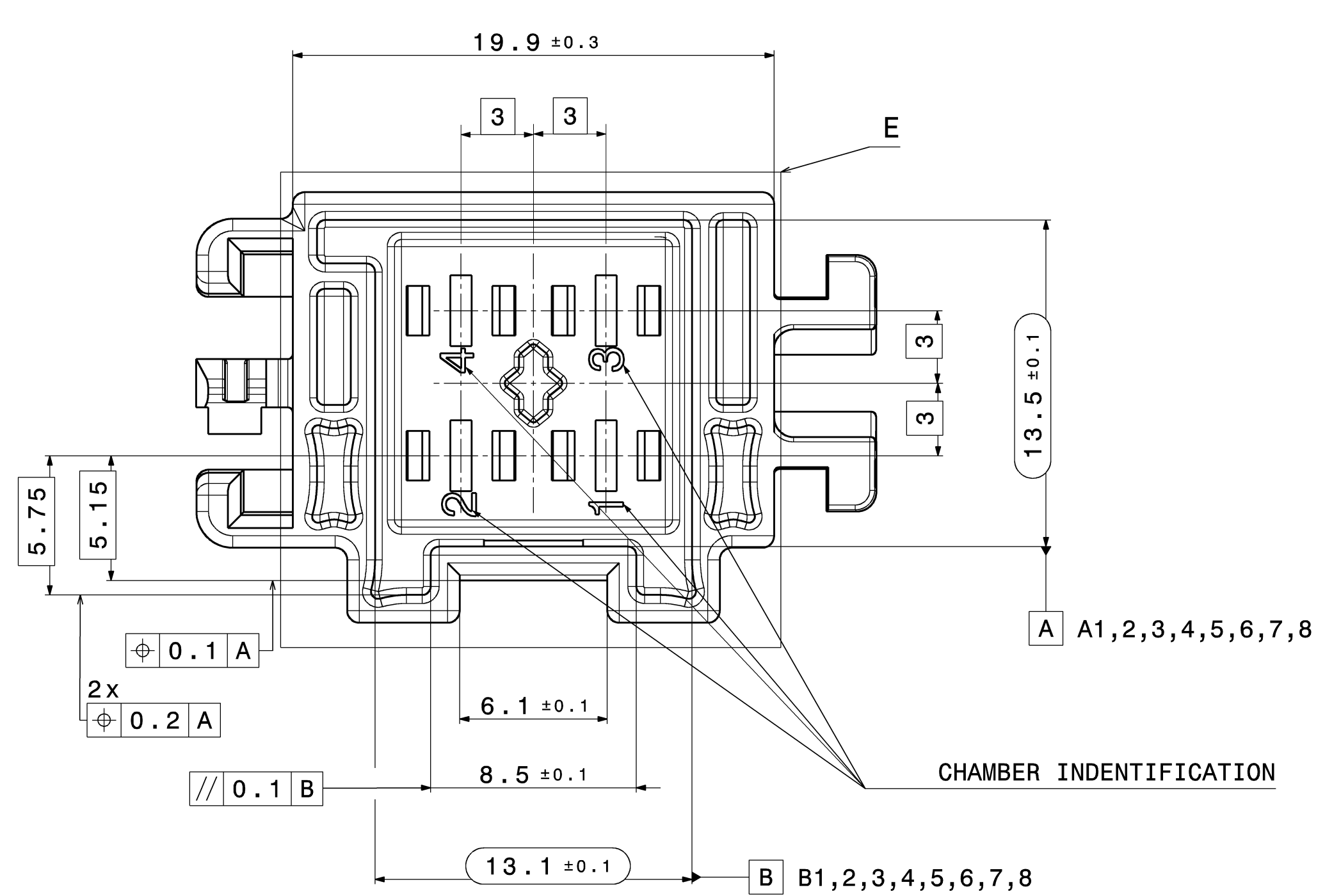
GENERAL TOLERANCES FOR UNTOLERATED DIMENSIONS:
1. ANGLE-DIMENSIONS [°]
TOLERANCE FOR ALL ANGLE-DIMENSIONS: ±2°
2. RADII: [mm]
D0 11-13 13-18 18-20 20-30 30-50
±0.2 ±0.3 ±0.4 ±0.5 ±1 ±2
3. DISTANCE-DIMENSIONS: DIN 2768-mH
4. GENERAL TOLERANCE FOR SYMMETRY: ±0.2

CONNECTOR KEY-FACTS:

CONTACT CHAMBER:	1-4
CONTACT SYSTEM:	2.8mm
MAX. WSR [mm²]	4mm²
MAX. ISO-Ø [mm]	MAX. INSULATION DIAMETER FOR 2.8: SEE RELEASED CONTACT DRAWING
DYNAMIC LOAD	S81
ACC EPS-100095-00	SURFACE: Sn
TEMPERATURE AREA (1000h)	+130°C
ACC EPS-100095-00	HB
FLAME RESISTANCE ACC UL94 (ACC. DATA SHEET)	(1.6mm WALL THICKNES)

ADDITIONAL VALID DOCUMENTS:

	HA NUMBER:
MATCHING TO INTERFACE CONNECTION:	872-930-...00
MATCHING TERMINAL:	Tyco C-1355052
MATCHING COUNTERPART HIRSCHMANN:	706-451-...00
MATCHING TO JOINING ELEMENT:	Tyco C-114-18063-002
PRODUCT SPECIFICATION:	EPS-100095-00
PROCESSING SPECIFICATION:	EVS-100095-00
D-VALIDATION PLAN (FIRST RELEASE):	DVP-102830-00
SPECIFICATION:	EPH-100017-00



706-651-515	A	E	MAY GREEN, SIMILAR RAL6017
706-651-514	A	D	CLARET VIOLET, SIMILAR RAL4004
706-651-513	A	C	LIGHT BLUE, SIMILAR RAL5012
706-651-512	A	B	NATURE
706-651-511	A	A	BLACK, SIMILAR RAL9011

PART NUMBER: REVISION: CODING: COLOR:

COMMENTS:
1. CODING A IS SHOWN
2. DELIVERY STATUS AS DRAWN
3. ENGLISH TEXT IS VALID
4. MISSING DIMENSIONS SEE CAD-MODEL. THEREFORE THE GENERAL-TOLERANCES ARE VALID
5. DESIGN DEVIATIONS COMPARED WITH DETAIL DRAWINGS ARE INSIGNIFICANT.
THE DETAIL DRAWINGS ARE VALID.
6. PART CORRESPONDS TO EU SCRAP CAR GUIDELINE 2000/53/EG
7. CHANGES BASED ON TECHNICAL PROGRESS ARE IN THE DECISION OF THE MANUFACTURER!
DETAILS OF IMPLEMENTATION ARE LEFT TO MANUFACTURER.
8. MAX. 30% -N9 RECLAIM PERMITTED
9. PART IDENTIFICATION SIMILAR DIN 1451 ±0.2 ±0.2
10. DRAFT ANGLE WITHIN TOLERANCE.
11. MAX. SPLIT LINE 0.1
12. MAX. BURR 0.3
13. DIMENSIONS MARKED WITH () ARE DOCUMENTED IN THE INITIAL SAMPLE INSPECTION REPORT (ISR). UNMARKED DIMENSIONS ARE ALSO MEASURED BUT NOT DOCUMENTED IN THE ISR. VARIATIONS MUST BE CORRECTED.

00	Ersterstellung / Initial edition	29.07.2021	ALT
Version	Num.	Description of alteration	Date
Test instructions			
Club state	Material	Final state	Final weight
	PEI-670		g/pc
Material-No.	Tolerances	shape Tabelle	surface
	DIN	DIN ISO 13715	ISO 1101
	Edges	Geometric tolerances	ISO 1101
		ISO 1101	ISO 1101
		ISO 1101	ISO 1101
Drawn	Date	Drawn	Checked
29.07.2021	H. Karstl	15.03.2022	T. Birk
Material	Date	Material	Date
4way 2.8 EasyConn M Connector Neutral	15.03.2022	4way 2.8 EasyConn M Connector Neutral	15.03.2022
HIRSCHMANN AUTOMOTIVE	08	Drawing - No.	706-651-...00
Origin	Replacement	Origin	Replacement