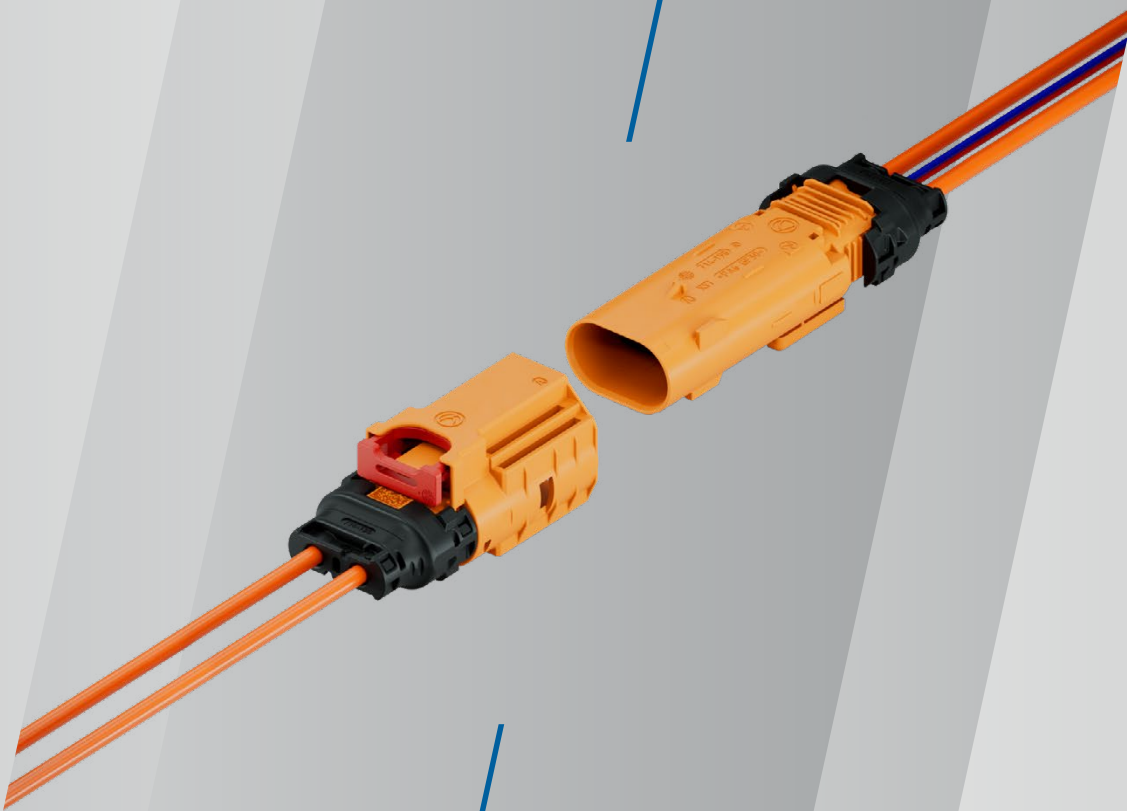


HPS28 2+2 UNSHIELDED

Effortless High Voltage Connections for EV
Auxiliary Units

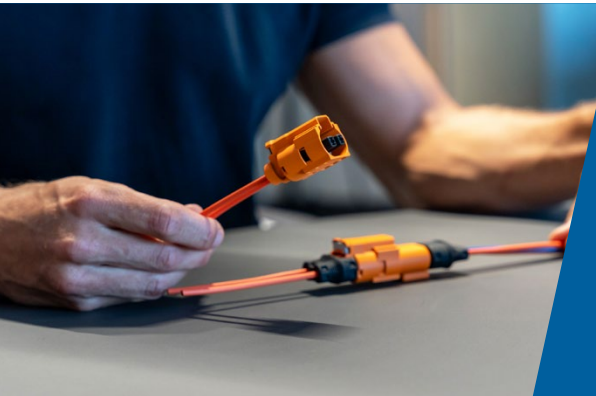


HIRSCHMANN
AUTOMOTIVE

EFFICIENT CONNECTION FOR ALL AUXILIARY UNITS

Step into a new era of high voltage connectivity with our unshielded high voltage connection system, designed to redefine the way auxiliary units in electric vehicles are connected. Whether you're an automotive manufacturer or a technology enthusiast, our connector offers a seamless solution for efficient and streamlined connections of auxiliary units.

Driven by innovation, our unshielded high voltage connector system sets a new standard for auxiliary unit integration. Its cutting-edge design ensures quick, secure, and effortless processing, making it an essential component for enhancing the connection of auxiliary units in electric vehicles.



Characteristics:

- compliant with several automotive test specifications
- unshielded connector system
- easy processing
- robust and simple design
- IPXXB+ with optional HVIL
- different terminal options
- high current load at high ambient temperatures
- watertight according to IP6K9K

TECHNICAL PRODUCT INFORMATION

CURRENT CLASS	current class 1 connector
APPLICATIONS	auxiliary units
NUMBER OF PINS	2 (high voltage) + 2 (HVIL optional)
OPERATING CONDITIONS	1,000 VDC
VOLTAGE CLASS	class B according ISO 6469-3:2011 60 VDC < U ≤ 1,000 VDC 25 VAC < U _{eff} ≤ 707 VAC (15-150 Hz)
AMBIENT CONDITION	-40° C to +125° C
MAXIMUM ALTITUDE	5,600 m
MAXIMUM CURRENT LOAD	related on choosen contacts, for details have a look at the product specification
MAXIMUM OPERATING TEMPERATURE	+180° C
IP-DEGREE OF PROTECTION	IPXXB+ UL (unmated), IPXXD (mated)
WATERTIGHTNESS	IP6K9K, IPX8
SHIELDED AREA	unshielded
VIBRATION STRENGTH	according to TFL 0214 / PG17 V2 Tmax +140° C (first fixation point at 200 mm)
MATING/UNMATING FORCE	< 50 N
SECONDARY LOCK SYSTEM	activating force < 40 N, no unintentional opening possible
KOSHIRI SAFETY	yes
POLARIZATION/CODING	incorrect insertion force > 150 N
CPA SYSTEM	operating force < 30 N optional opening only with tool, closed CPA position recognizable by scannable DMC code
HVIL SYSTEM	minimum 1.0 mm, leading

CONTACT SYSTEM INFORMATION

CONTACT SYSTEM	2.8 x 0.8 (KT/MCP/CTS/MAK), Ag, crimped
MATERIAL/SURFACE	Cu-Leg., CuNiSi, Ag
CONNECTION	crimped
MATING CYCLES	maximum 50 cycles

CUSTOMER-SPECIFIC INFORMATION

CABLE CROSS SECTION	1.5 mm ² , 2.5 mm ² , 4.0 mm ² , 6.0 mm ²
CONNECTOR CODINGS	A, B, C, D, Z

HPS28 2+2 UNSHIELDED PRODUCT VARIANTS

FEMALE

SINGLECORE CONNECTION
different technical configurations possible



IN-LINE*

SINGLECORE CONNECTION
different technical configurations possible

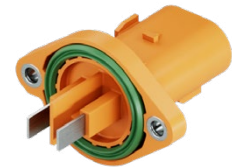


180° MALE

CABLE CONNECTION



BLADE CONNECTION



Customer specific connection variants on request.

SEEKING MORE DETAILED INFORMATION?
SCAN ME AND BROWSE THROUGH THE
PRODUCT CATALOGUE.



**Contact our Sales Team
for Individual Questions**



+43 5522 307 0



sales@hirschmann-automotive.com

Hirschmann Automotive GmbH

Oberer Paspelsweg 6–8
6830 Rankweil, Austria

www.hirschmann-automotive.com
shop.hirschmann-automotive.com

